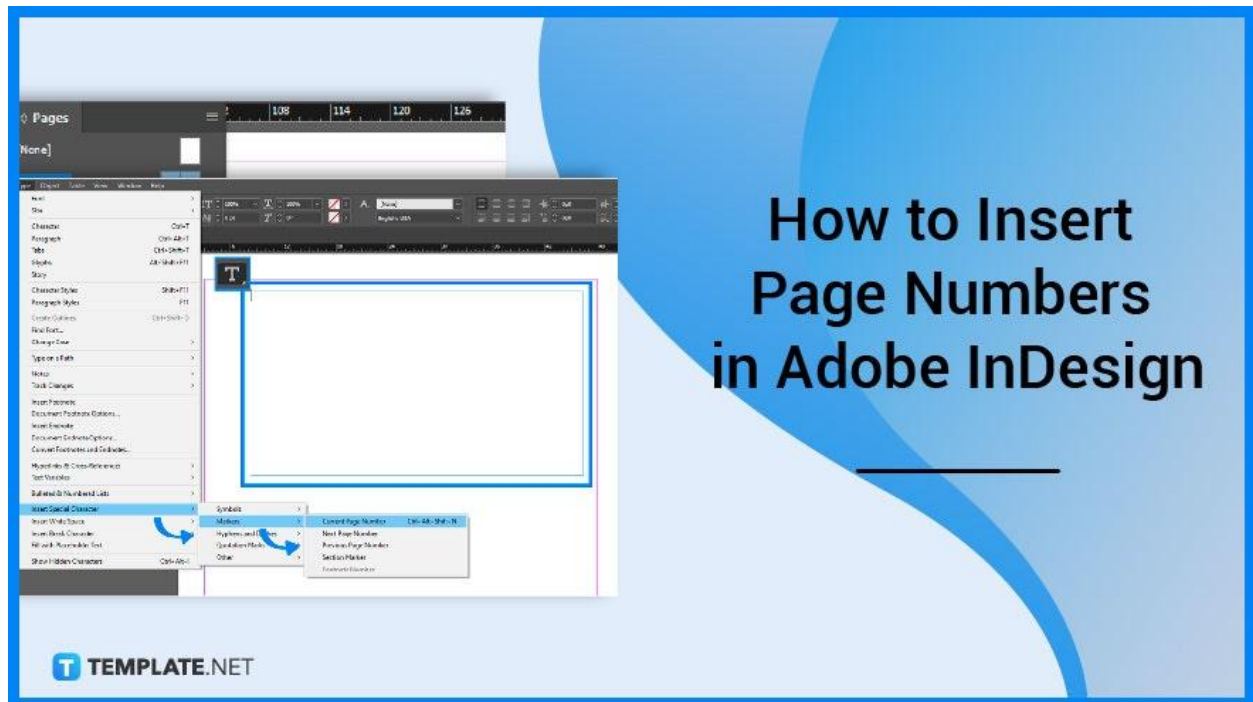


How to Insert Page Numbers in Adobe InDesign

Discover how to insert page numbers in Adobe InDesign. That way you can label the pages of your works like brochures and booklets that you have made in the program.

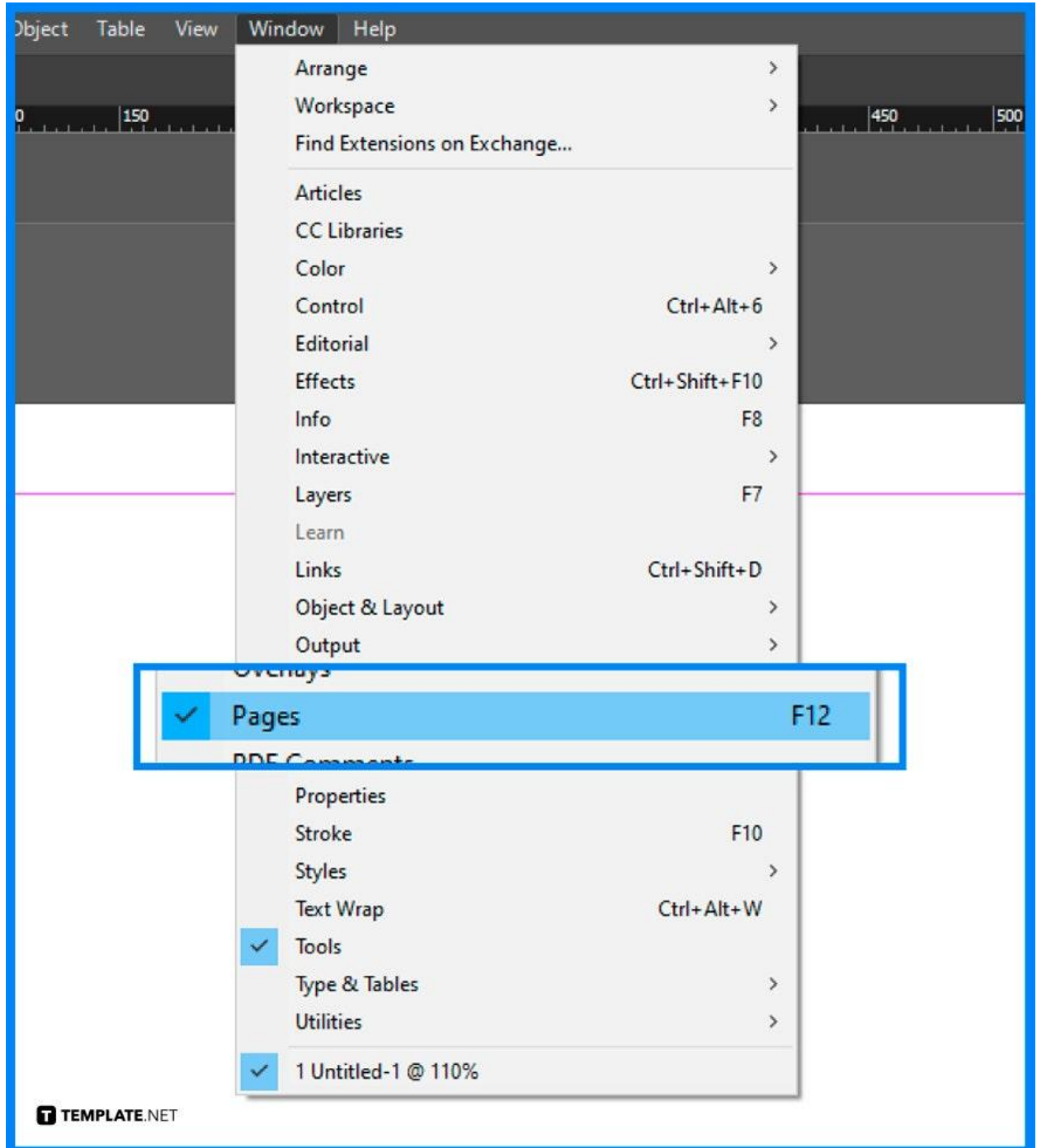


How to Insert Page Numbers in Adobe InDesign

Inserting page numbers take only a few seconds. Open your Adobe InDesign file and follow these three steps.

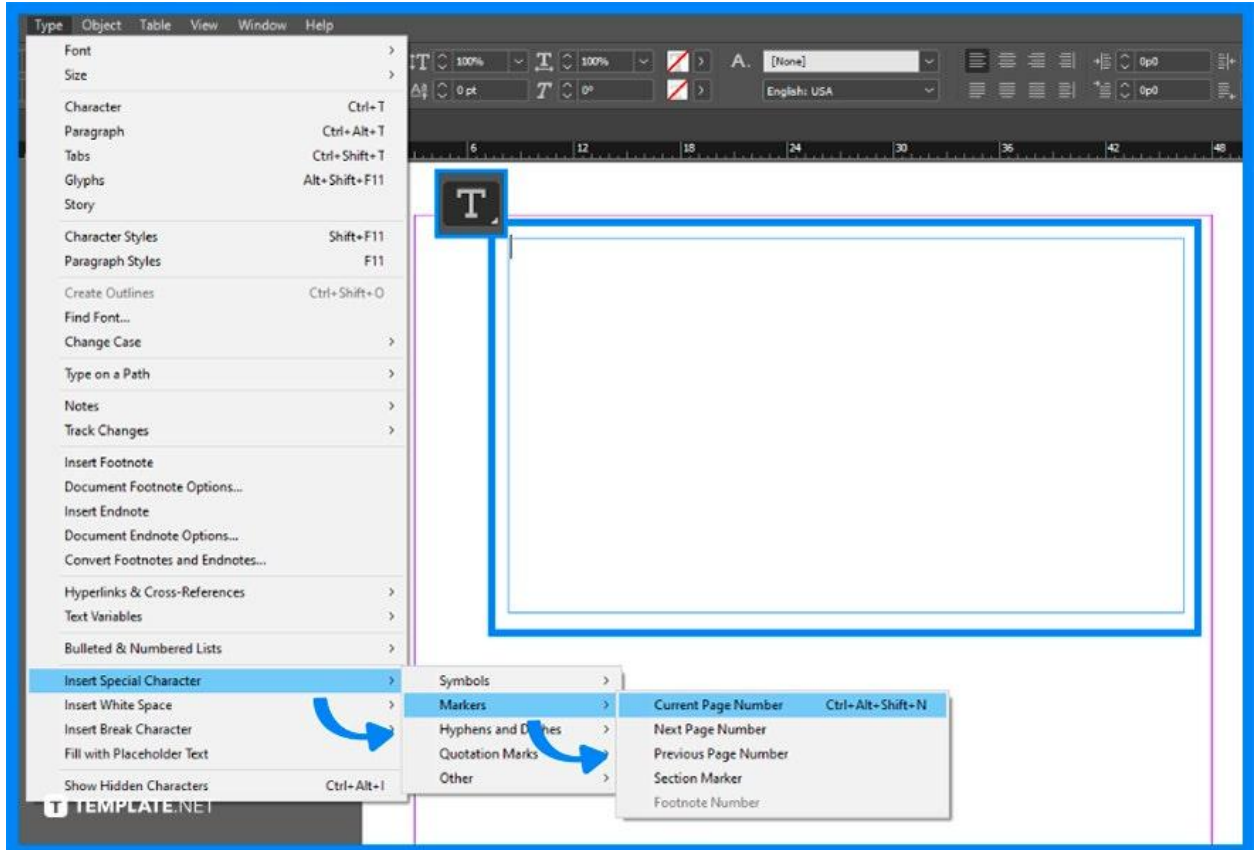
- **Step 1: Find the Pages Panel**

To do that, go to the Window at the menu bar and click on Pages at the dropdown. This will open a Pages Panel at the side of your InDesign file. Move your cursor there and double-click on the Master Pages option.



- **Step 2: Select Textbox Tool and click 'Type'**

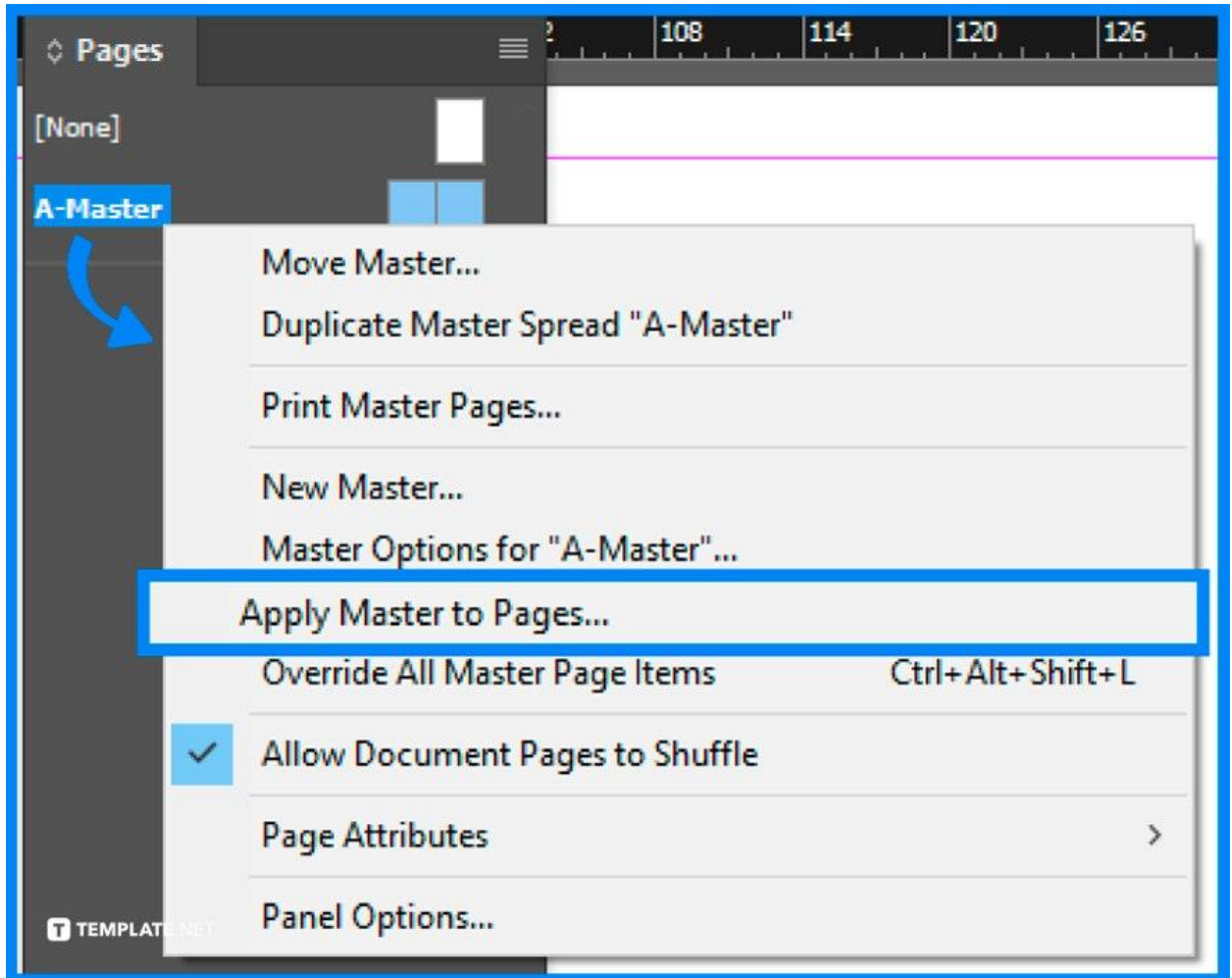
Next, select the Textbox Tool at the toolbar and create a text box on the part of the page where you want to insert the page number. Then click on 'Type' at the menu bar and click on 'Insert Special Characters' at the dropdown, followed by 'Markers' and 'Current Page Number'.



Remember to hold down the 'Shift' key to create a proportionate or equal shape.

- **Step 3: Choose 'Apply Master to Pages'**

Then move your cursor to the Pages Panel again and left-click on the Master Pages option. A dropdown will appear, then click on 'Apply Master to Pages'. A dialog box will appear where you can apply the page ranges and then click OK. And that is how you insert page numbers in Adobe InDesign.



FAQs

Can I put my page numbers anywhere in Adobe InDesign?

Yes, there is no set position to place your page number, so you can actually put them anywhere.

What is the Pages Panel?

The Pages Panel is a panel on Adobe InDesign that lets you easily view and access the pages present on your InDesign file.

Can I place the page numbers by just using the Textbox tool?

Yes, you can but it takes time as you have to manually add it and it is less organized in comparison.