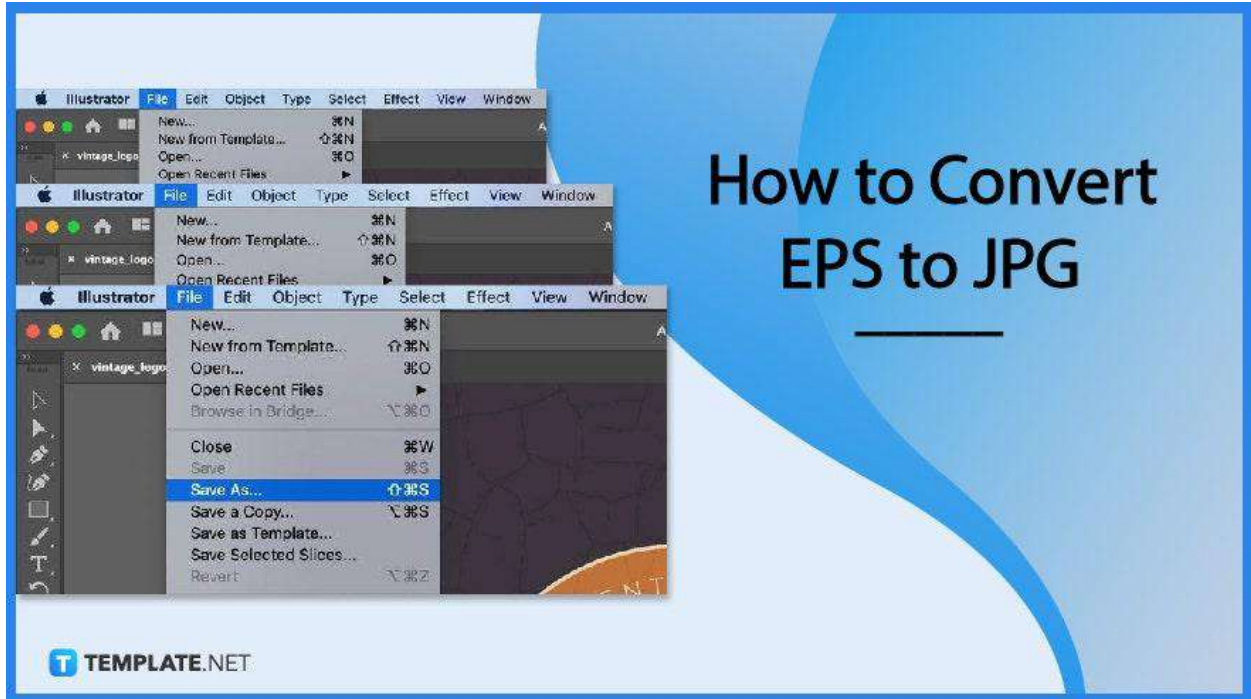


How to Convert EPS to JPG

With various illustrations, images, and graphics come the different file formats of these designs; learn how to convert EPS to JPG in this article. Both EPS (Encapsulated PostScript) and JPG (Joint Photographic Expert Group) are common image file formats in the market today including TIFF (Tagged Image File Format), GIF (Graphics Interchange Format), and PNG (Portable Network Graphics).



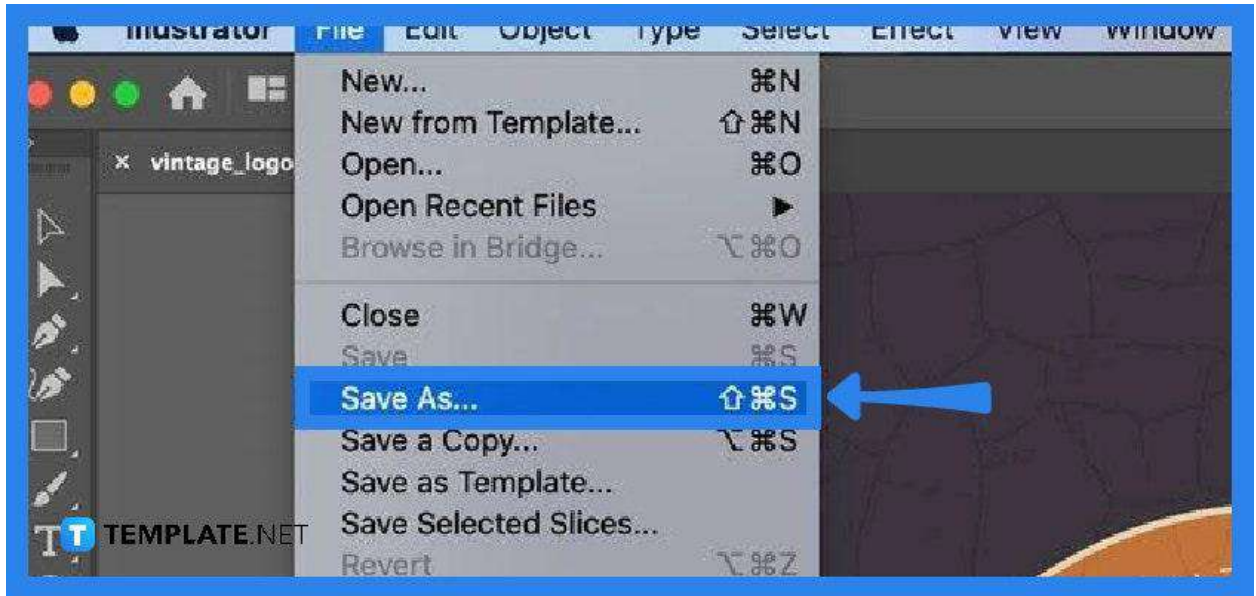
How to Convert EPS to JPG

Knowing how to convert different file formats is a handy thing to know about. Below are the step-by-step process of converting EPS to JPG.

- **Step 1: Save as JPG**

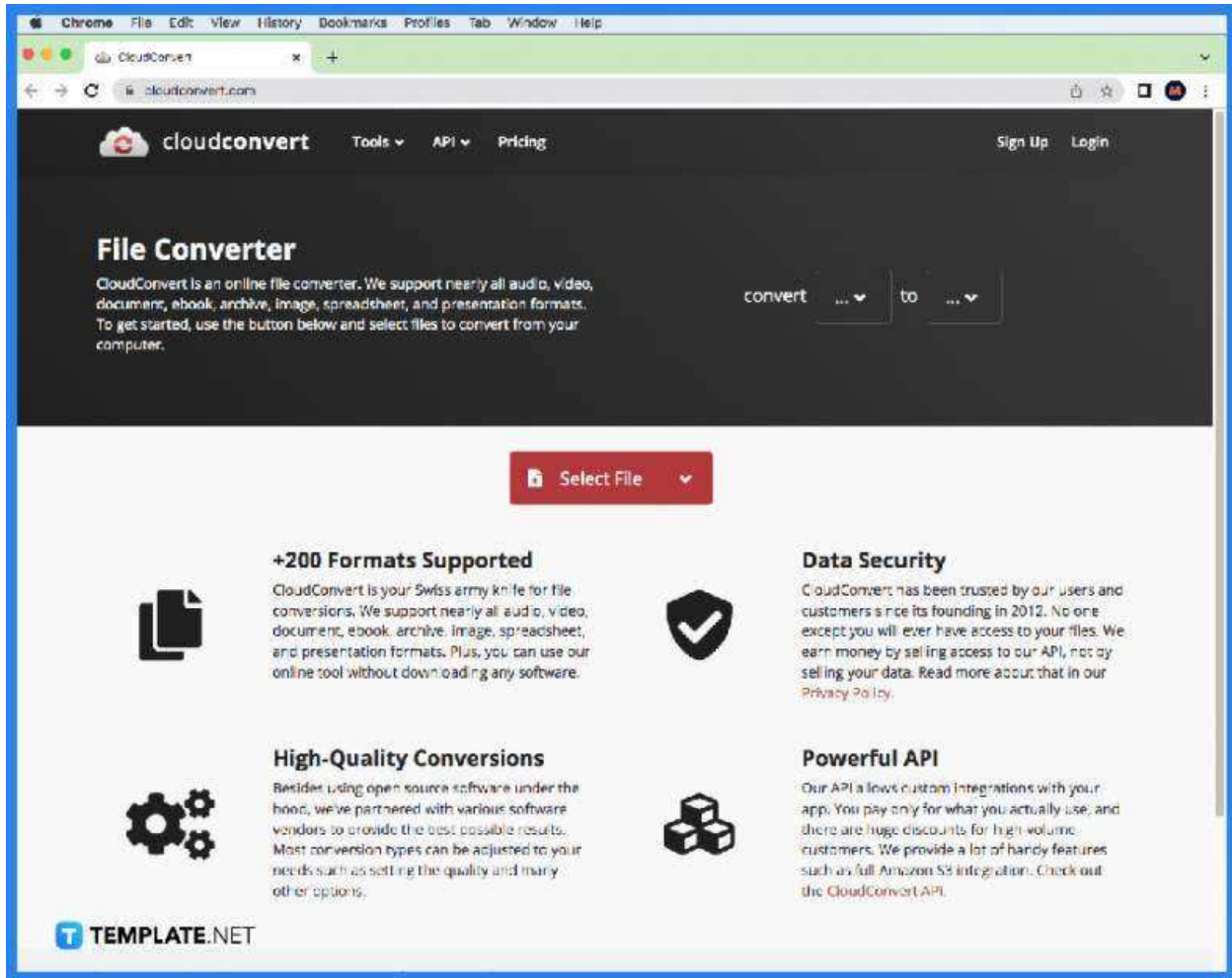
The first way to easily convert an EPS file to JPG is to resave the file from EPS to JPG. Open the file with any graphic design software that you use and then save it as

JPG.



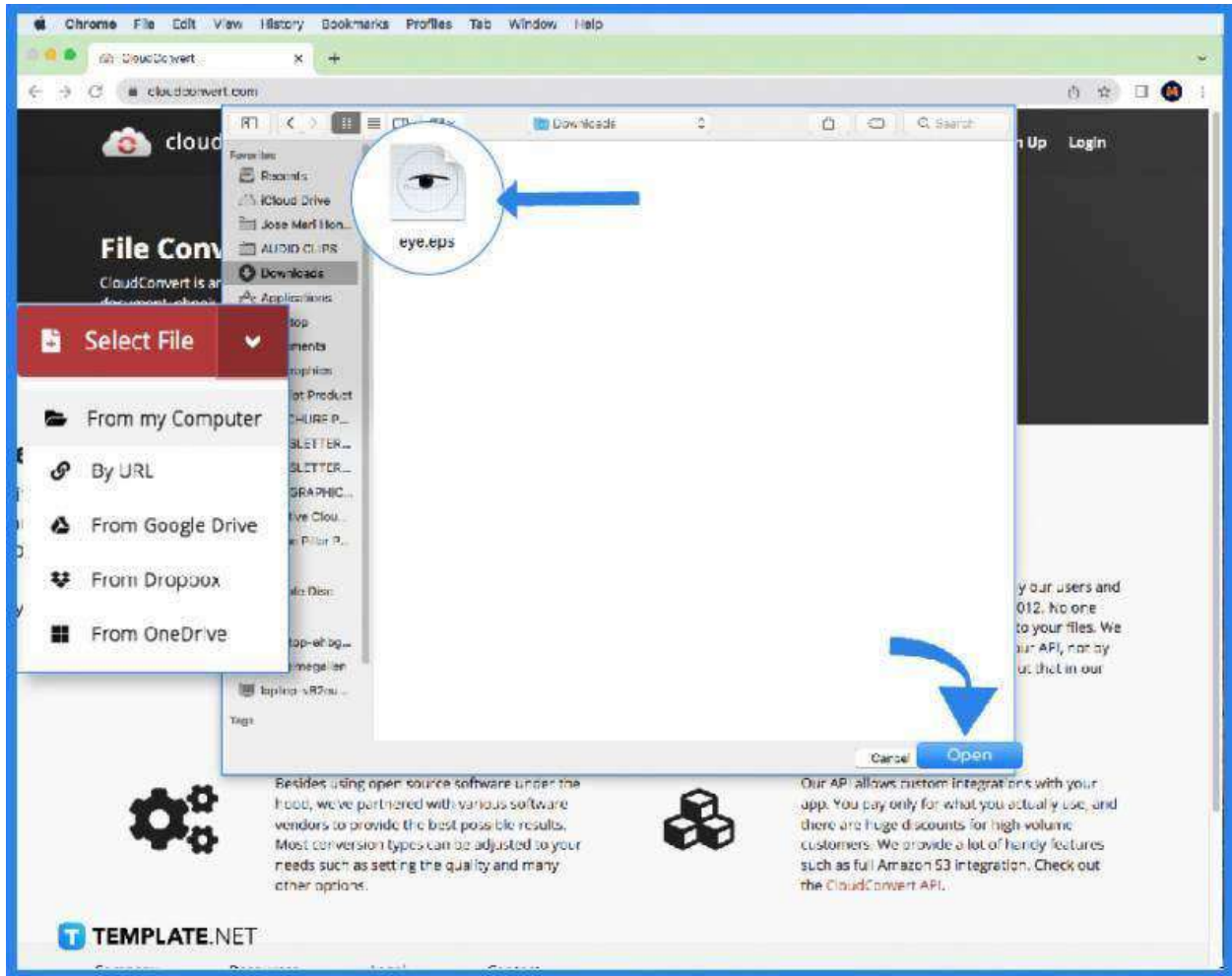
- **Step 2: Use Conversion Tool**

The second way to convert an EPS to JPG is to use any online conversion tool. Most file format online conversion tools can be used for free, while some ask for a reasonable amount to enjoy all of their features.



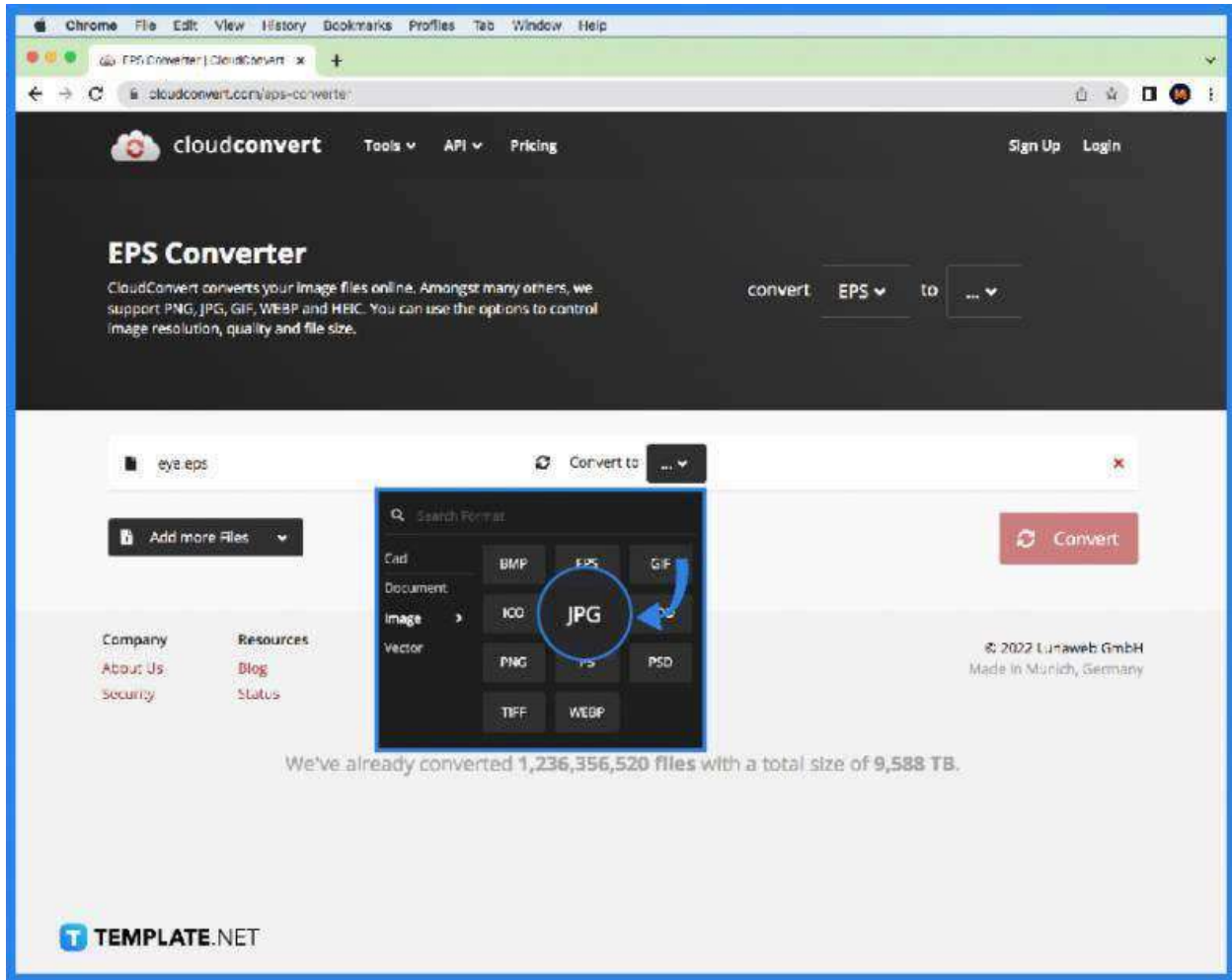
- **Step 3: Upload EPS File**

There are different ways to start the conversion process depending on the tool used; however, the common ones start with uploading the file into the software application. To do so, select the file on your computer or any storage service then it will automatically upload to the software application.



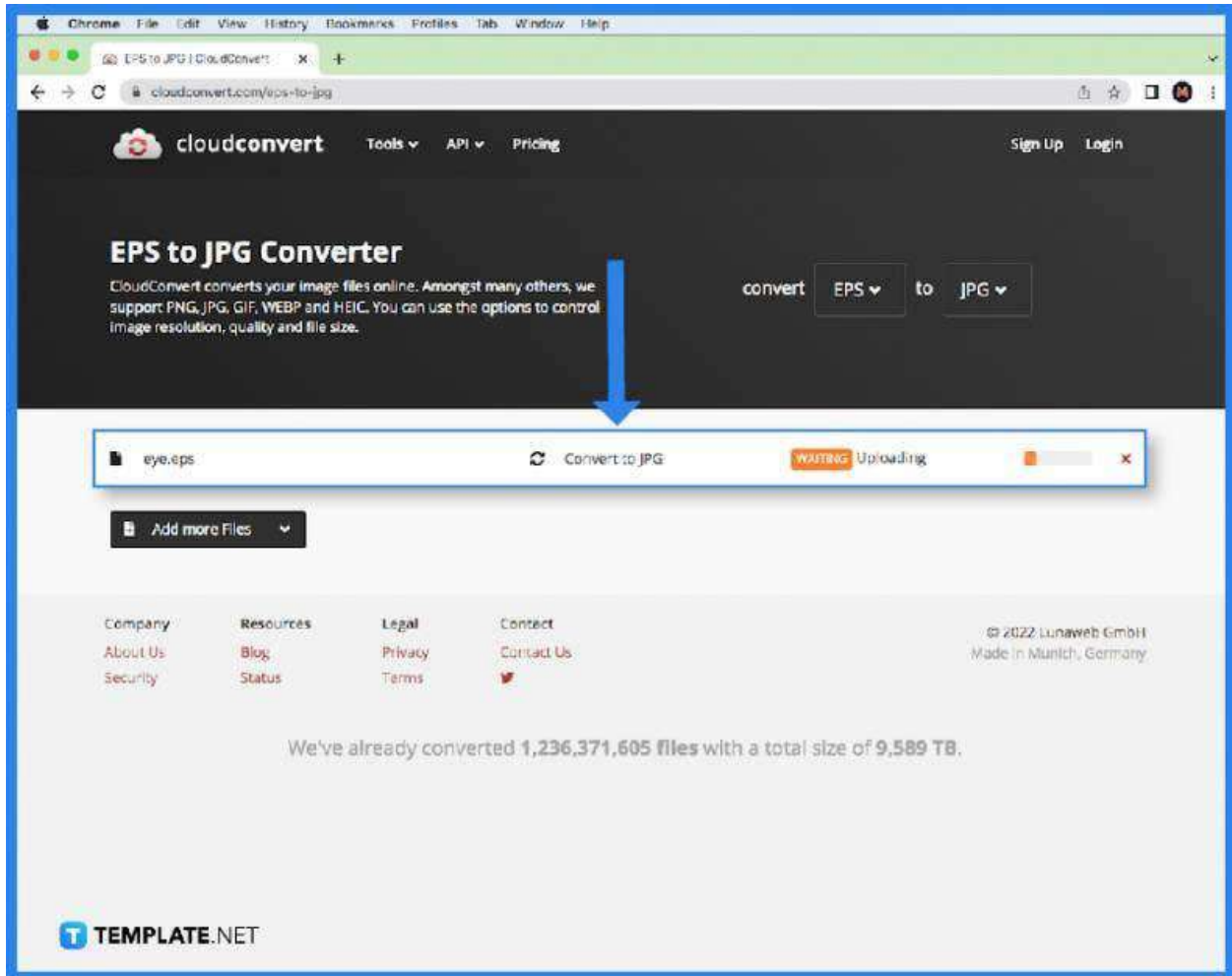
- **Step 4: Choose JPG**

After uploading the EPS file, choose to convert to JPG or JPEG among the file format options in the software application.



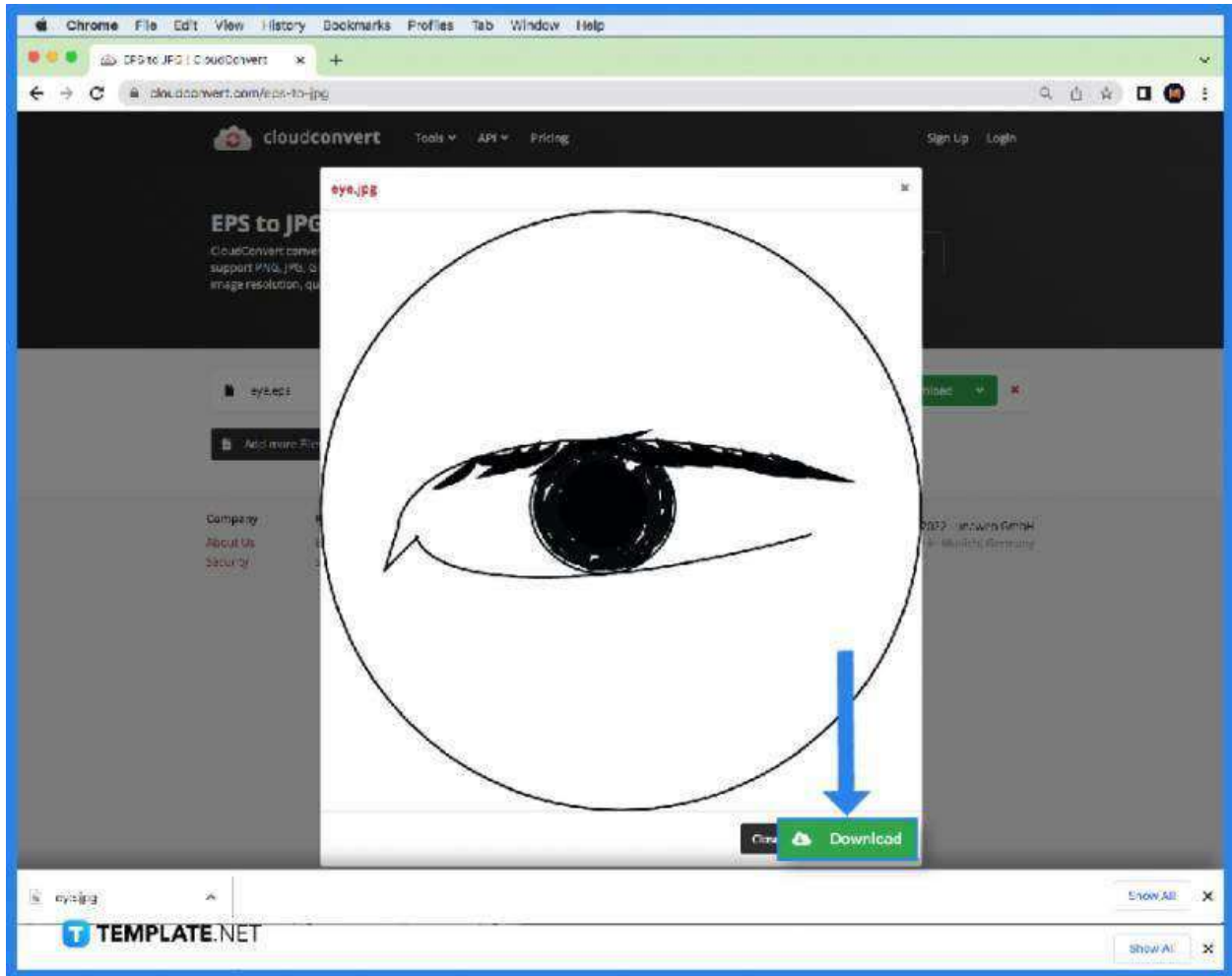
- **Step 5: Wait to Convert**

Most software applications will notify you of the conversion process and will prompt you when done.



- **Step 6: Download JPG**

After the software application does its magic, download the converted JPG file, and select the destination to save the file.



FAQs

Can you convert EPS files to JPG?

Yes, you can convert EPS files to JPG using graphic design software, such as Adobe Photoshop, and online conversion tools.

Is EPS the same as JPG?

EPS and JPG are not the same; EPS is a larger file, while JPG is a smaller image file.

What are other image file formats?

The common image file formats in the market are TIFF (Tagged Image File Format), GIF (Graphics Interchange File), PNG (Portable Network Graphic), JPG/JPEG (Joint Photographic Experts Group), and EPS (Encapsulated PostScript).

What is the benefit of using JPG rather than EPS?

Using JPG or JPEG means quicker loading time and higher compatibility with other software programs and applications.

What is the disadvantage of using JPG?

JPG has an instance of losing the image quality, especially in the compression.

What is better to use EPS or JPG?

Both file formats work best in their own different niche; EPS is best for professional printing and large jobs, while JPG is better for quick and casual image use.

How to edit an EPS file?

To edit an EPS file, specialized software must be used such as Adobe Illustrator, and some online applications, such as Gravit.

Why use EPS file format?

The EPS file format is perfect for large-scale printing jobs so you do not have to worry about image quality in using this file format.