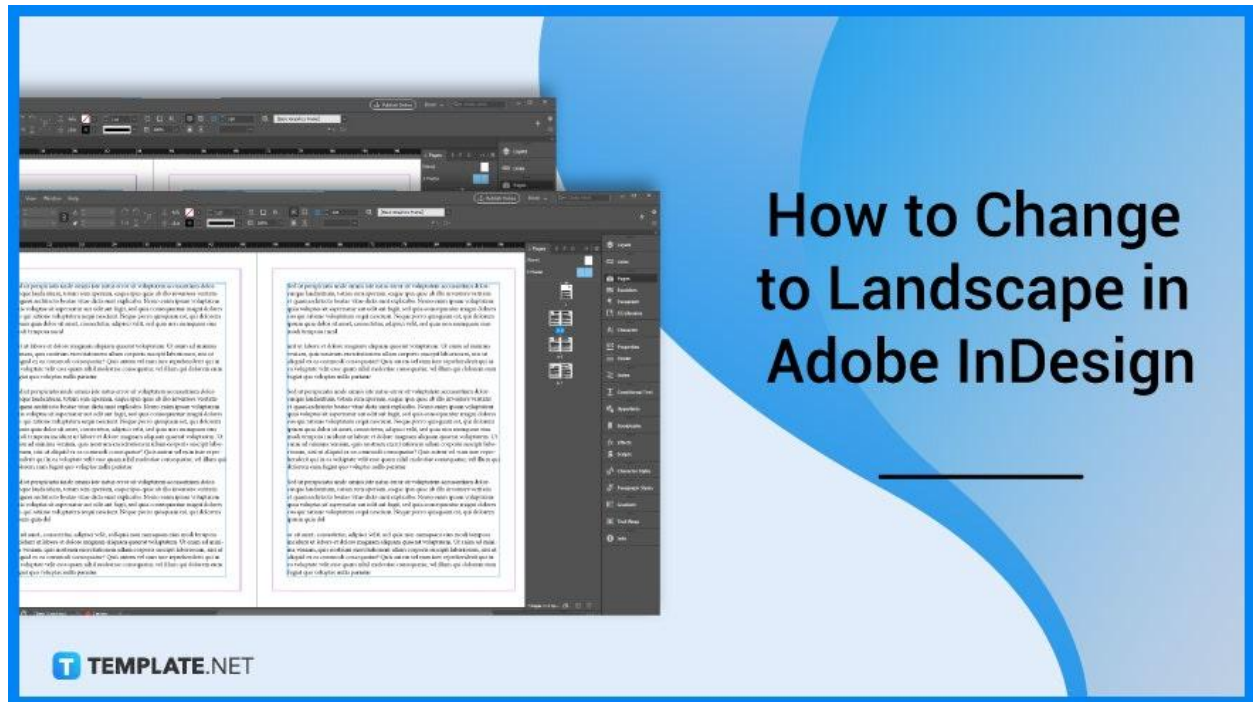


How to Change to Landscape in Adobe InDesign

Landscape orientation is used for wider horizontal designs or subjects. It is commonly applied to a page that contains a big table or wide presentation. In this article, learn how to change to landscape in Adobe InDesign.

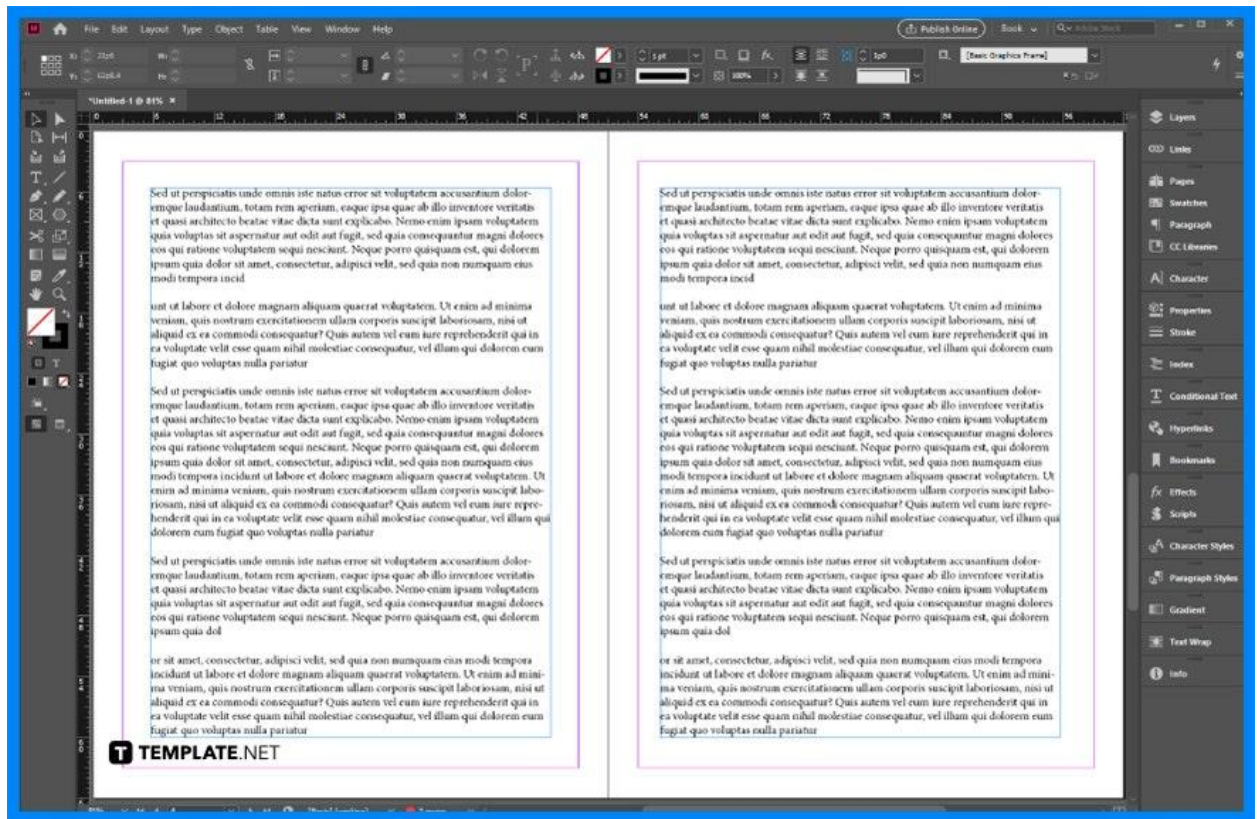


How to Change to Landscape in Adobe InDesign

Use the Page Layout tab to modify the orientation layout of your page. Below are some steps that you need to follow when you change your document or publication page layout to landscape using Adobe InDesign.

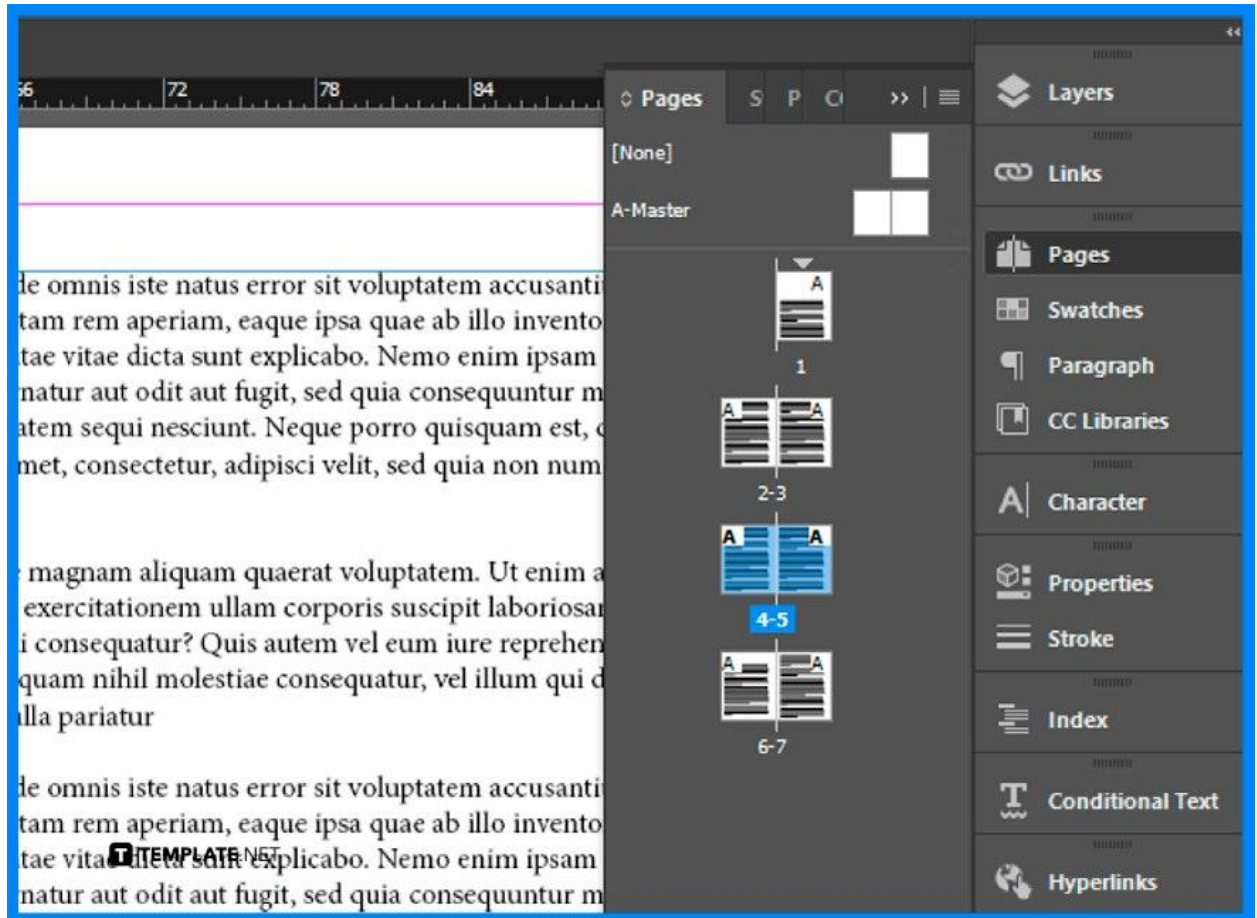
- **Step 1: Open the Document**

Go to Adobe InDesign. Then, open the document you want to change the page orientation to landscape.



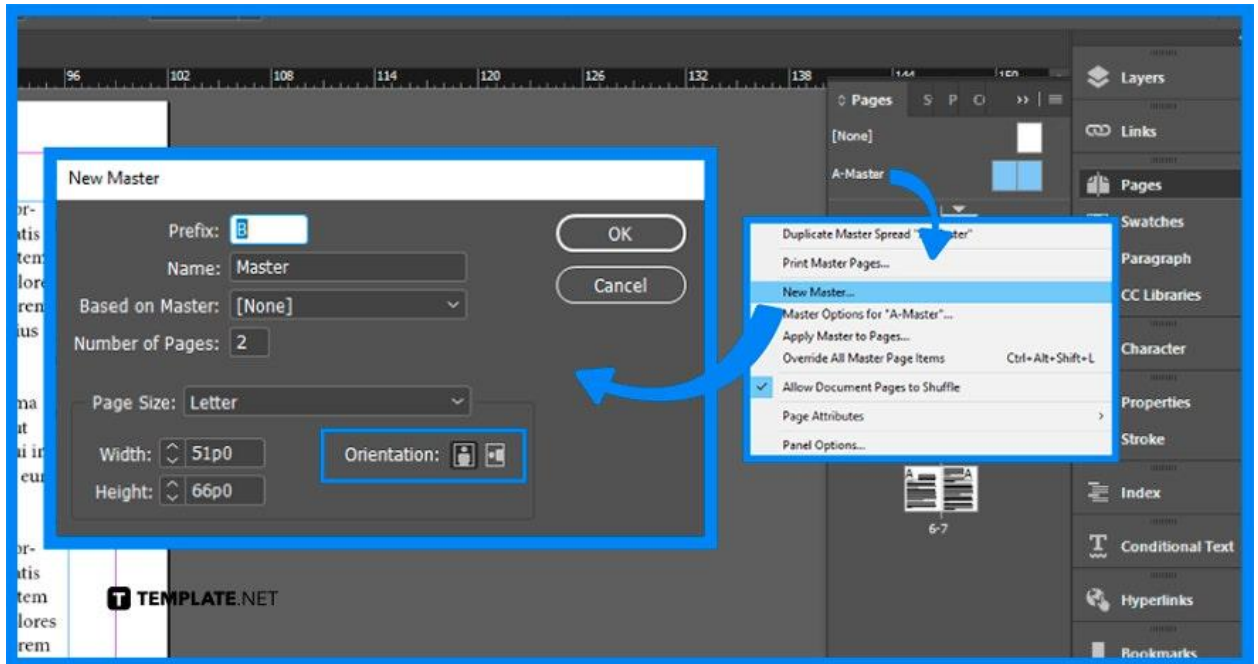
- **Step 2: Go to the Pages Panel**

Go to the right side of your screen and find the Pages panel. If you can't find the Pages panel, go to Window > Pages.



- **Step 3: Change the Page Orientation**

In the Pages panel, click anywhere you want, click the page, select New Master in the options at the right top part of the panel, and a new window will appear on your screen. There are different options that you can modify such as the prefix, name, based on Master, number of pages, width, height, and orientation, so change the orientation of the page to landscape and click OK.



FAQs

What is landscape layout?

Landscape layout is a horizontal orientation of a document or image which is usually used for charts, wider images, and text.

How to change a page from portrait to landscape in Adobe InDesign?

Go to the File menu, select Document Setup, and change the page orientation to landscape.

Can you have portrait and landscape in InDesign?

The dual layout function lets you have separate portrait and landscape layouts.

How to rotate orientation in Adobe InDesign?

Double-click the page numbers of the page spread you want to rotate, click the Options button on the panel, point to Page Attributes, point to Rotate Spread View, and click 90° CW, 90° CCW, or 180°.