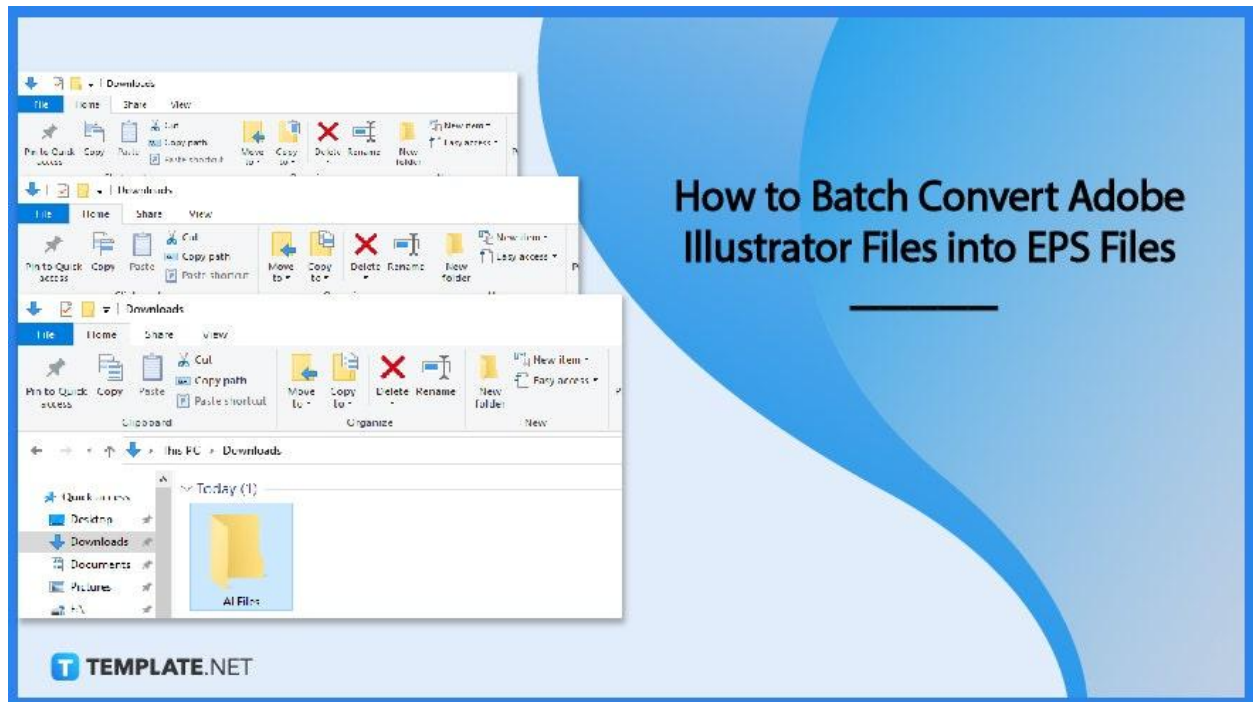


How to Batch Convert Adobe Illustrator Files into EPS Files

Adobe Illustrator is the best software to use in handling EPS files. With this, learning how to convert multiple Adobe Illustrator files into EPS is an efficient matter to master.

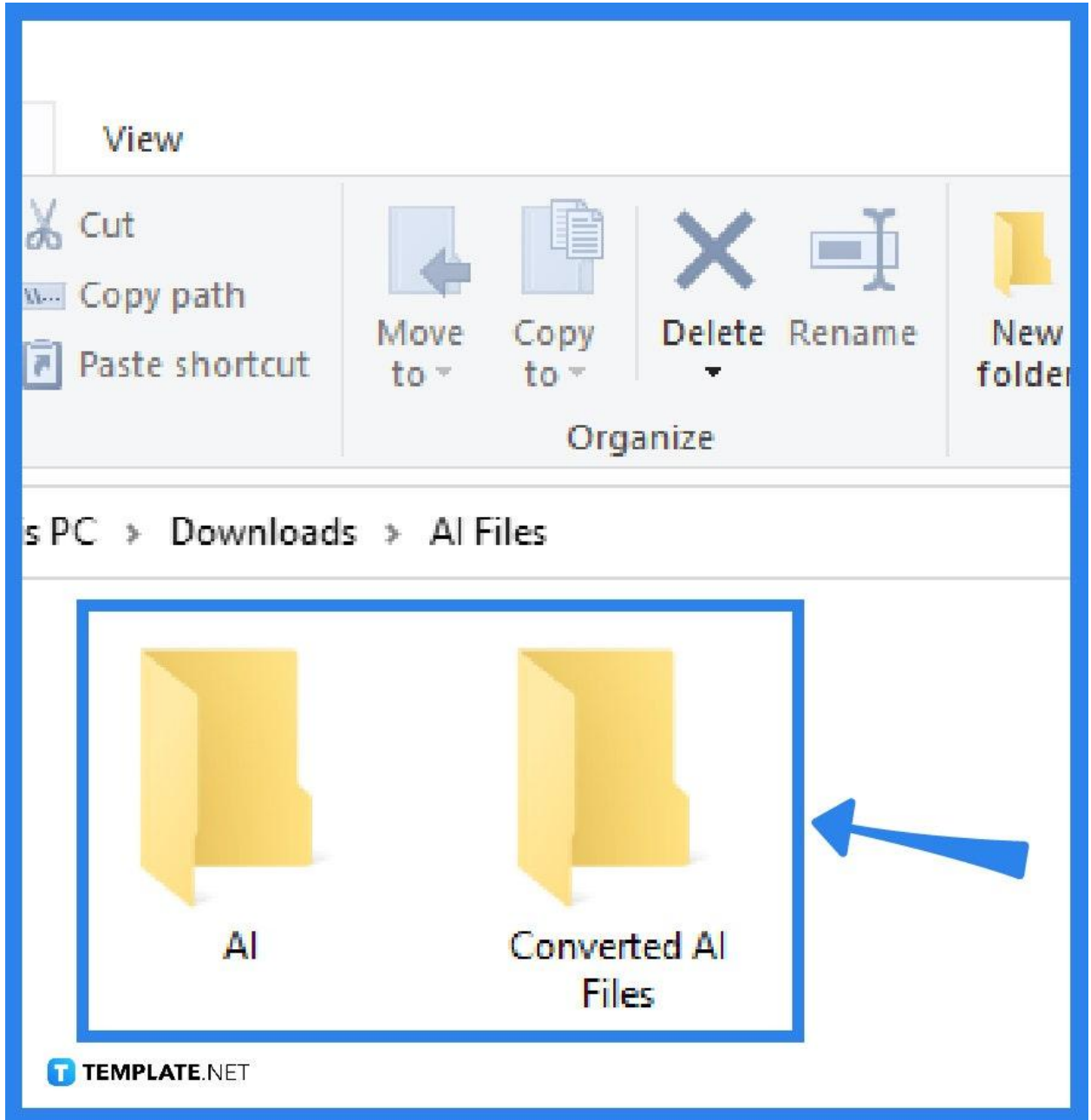


How to Batch Convert Adobe Illustrator Files into EPS Files

Converting Adobe Illustrator one by one is quite a tasking job, below is the step-by-step process of batch converting AI files to EPS files.

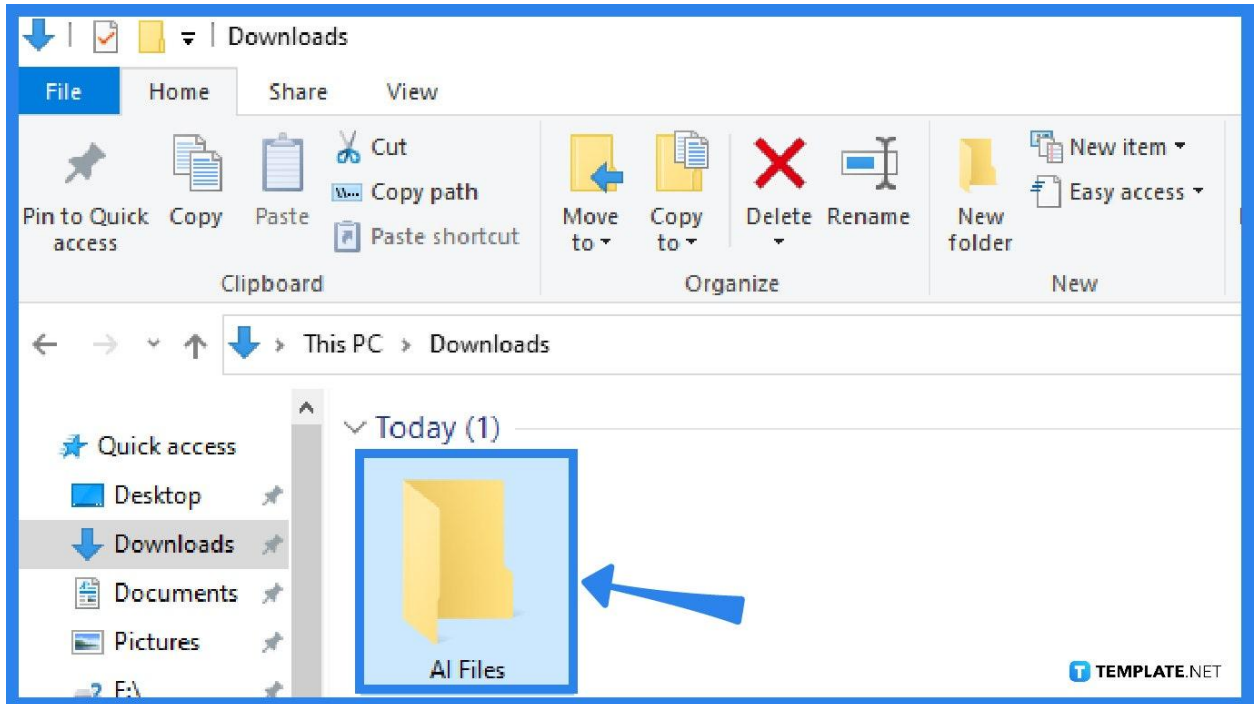
- **Step 1: Create Two Folders**

To start, create a new folder and name it “AI Files” or any name that indicates that this folder contains Adobe Illustrator files. The second folder must be named “Converted Files” to indicate that the files in the folder are the converted ones.



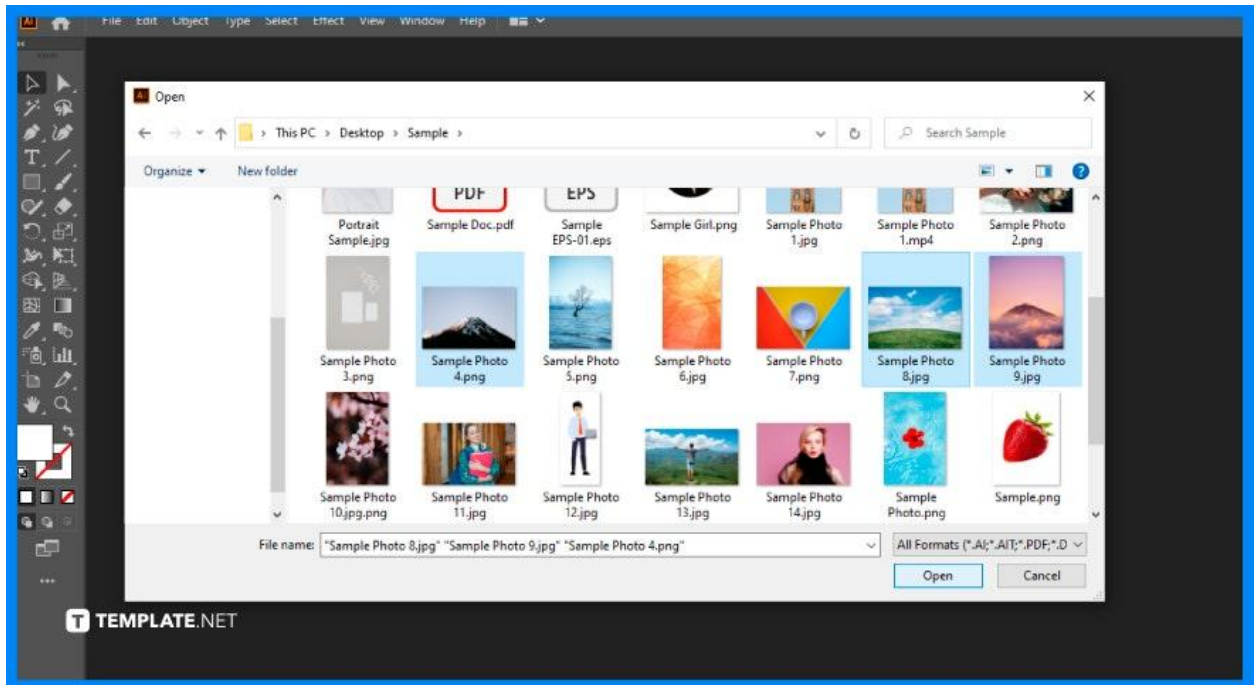
- **Step 2: Group Files**

Place all the Adobe Illustrator files that you wish to batch convert on the new folder entitled “AI Files”.



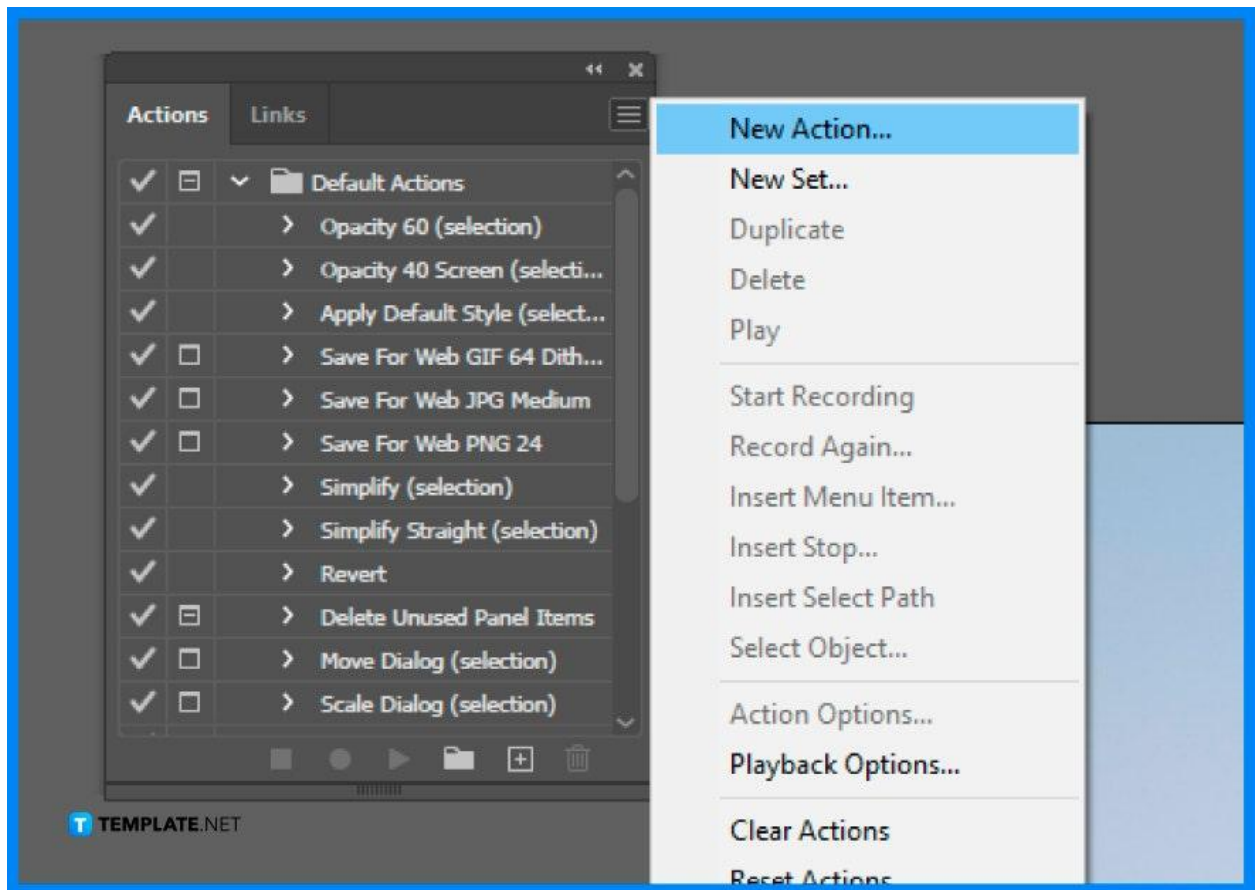
- **Step 3: Open Adobe Illustrator**

In Illustrator, open one file that you wish to convert.



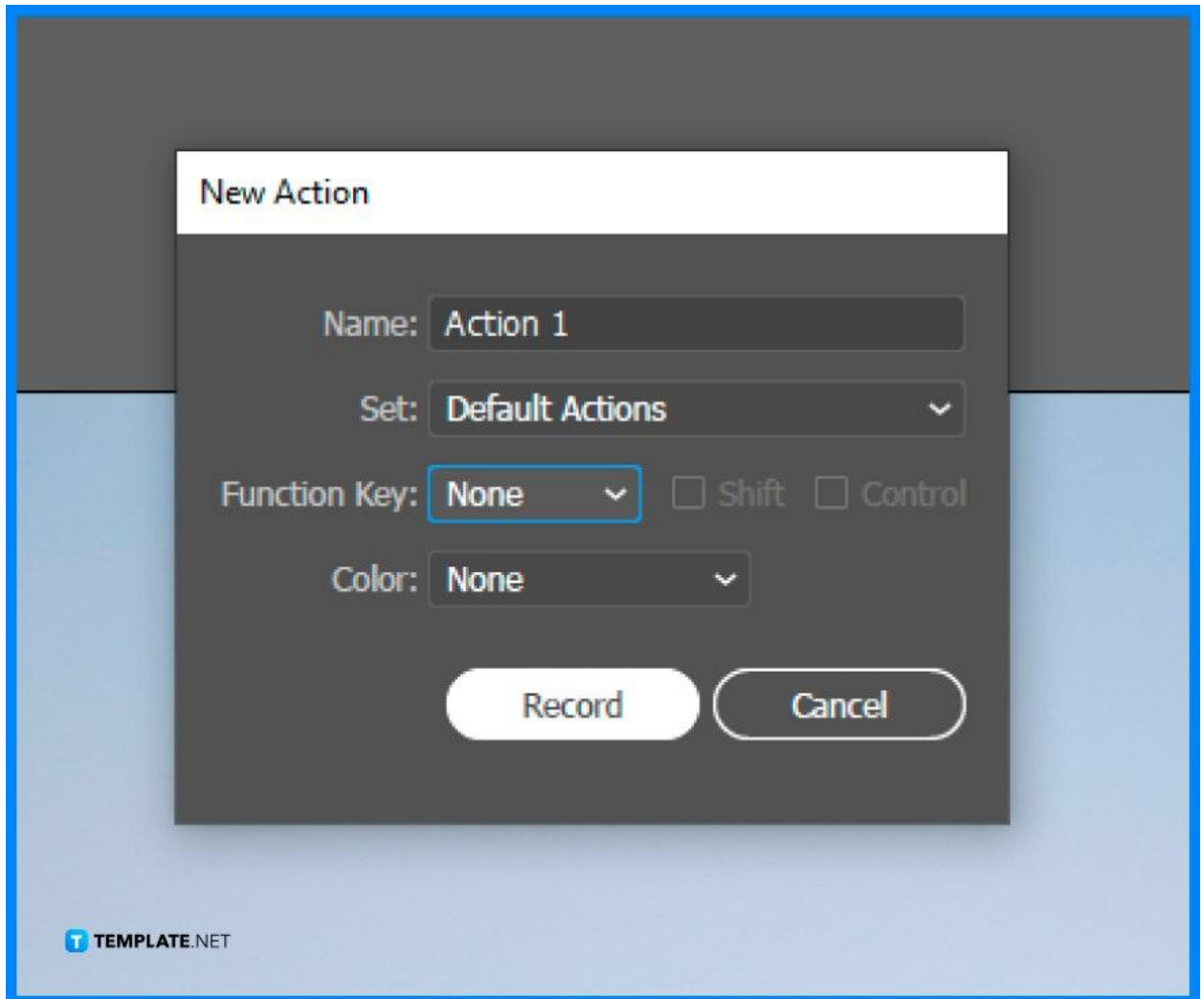
- **Step 4: Choose New Action**

In the Action panel, choose New Action (CS3), (CS4) or palette (CS2) menu.



- **Step 5: Record**

Name the new action and record.



The image shows a 'New Action' dialog box with the following fields and options:

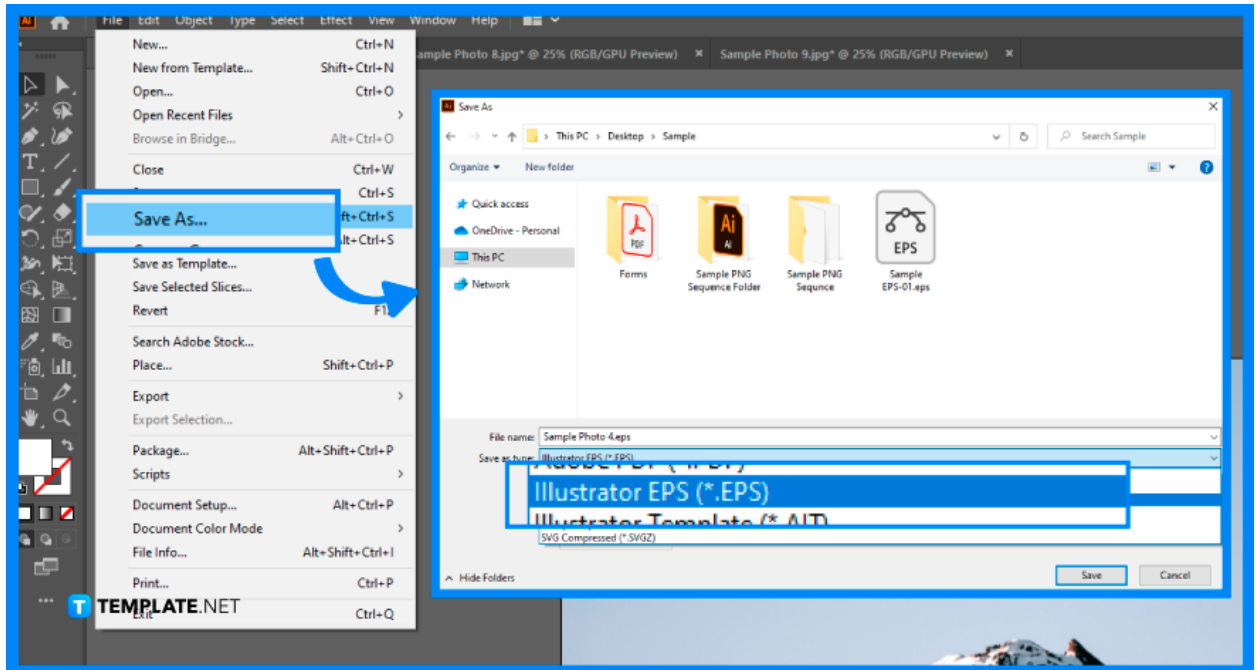
- Name:** Action 1
- Set:** Default Actions
- Function Key:** None (with checkboxes for Shift and Control)
- Color:** None

Buttons: Record, Cancel

TEMPLETE.NET

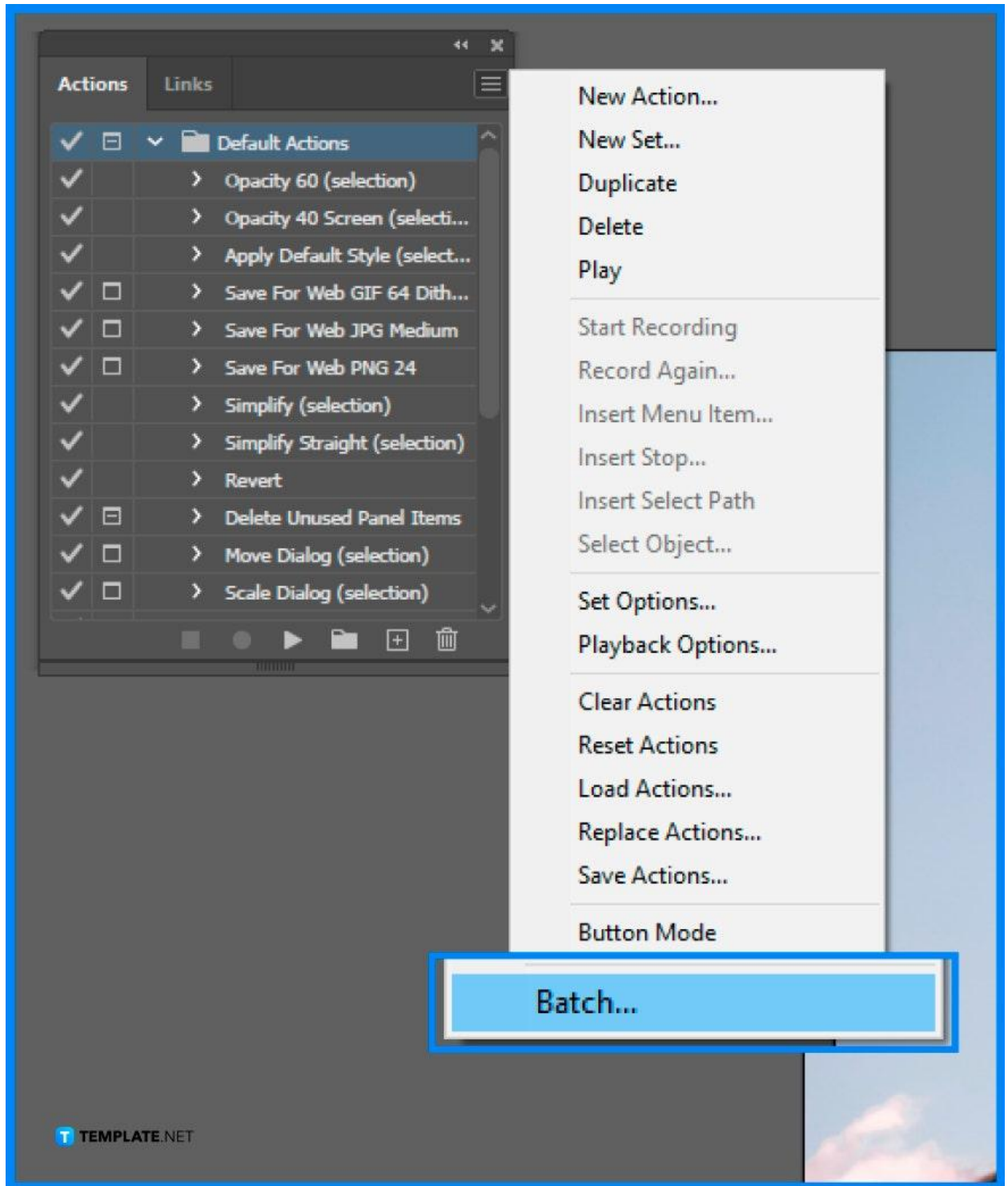
- **Step 6: Save**

Click File, then Save As, and then select either EPS or PDF from the Format menu for Mac OS users or Save As Type menu for Windows users, and make sure to save it on the “Converted File” folder.



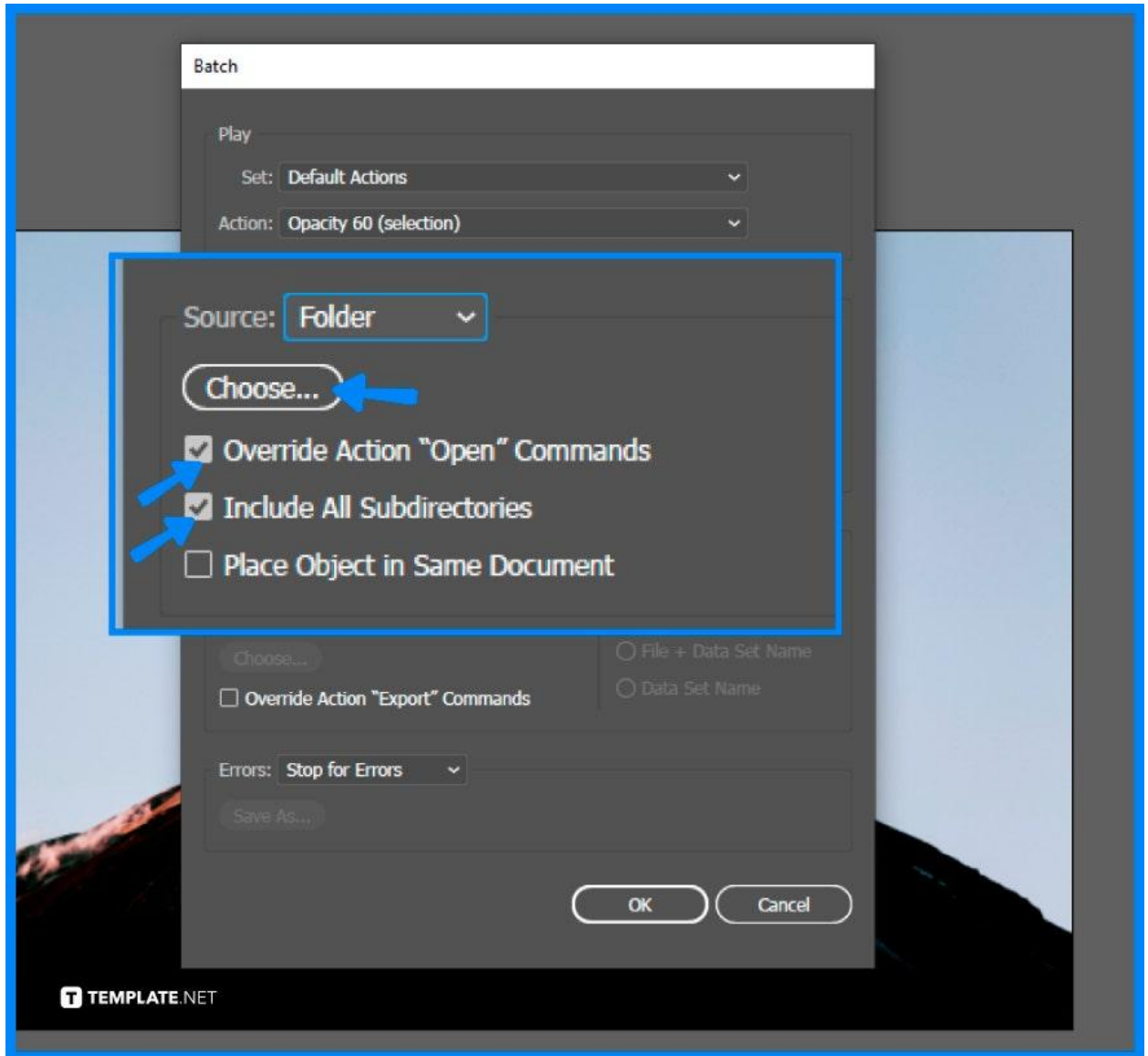
- **Step 7: Select Actions in the Panel**

Select the action in the Actions panel (CS3), (CS4), or palette (CS2) menu, and choose Batch.



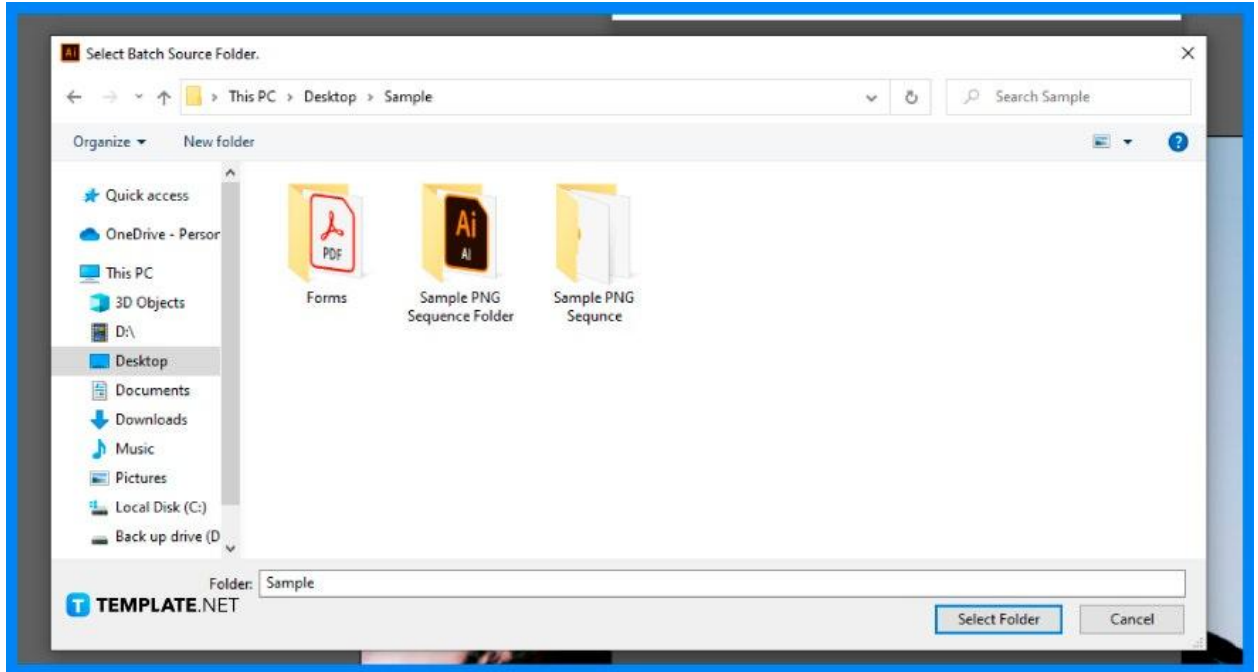
- **Step 8: Verify**

Go to the Source section, then verify the Override Action “Open” Commands and include all subdirectories that are deselected, and then select Choose.



- **Step 9: Navigate to Adobe Illustrator Folder**

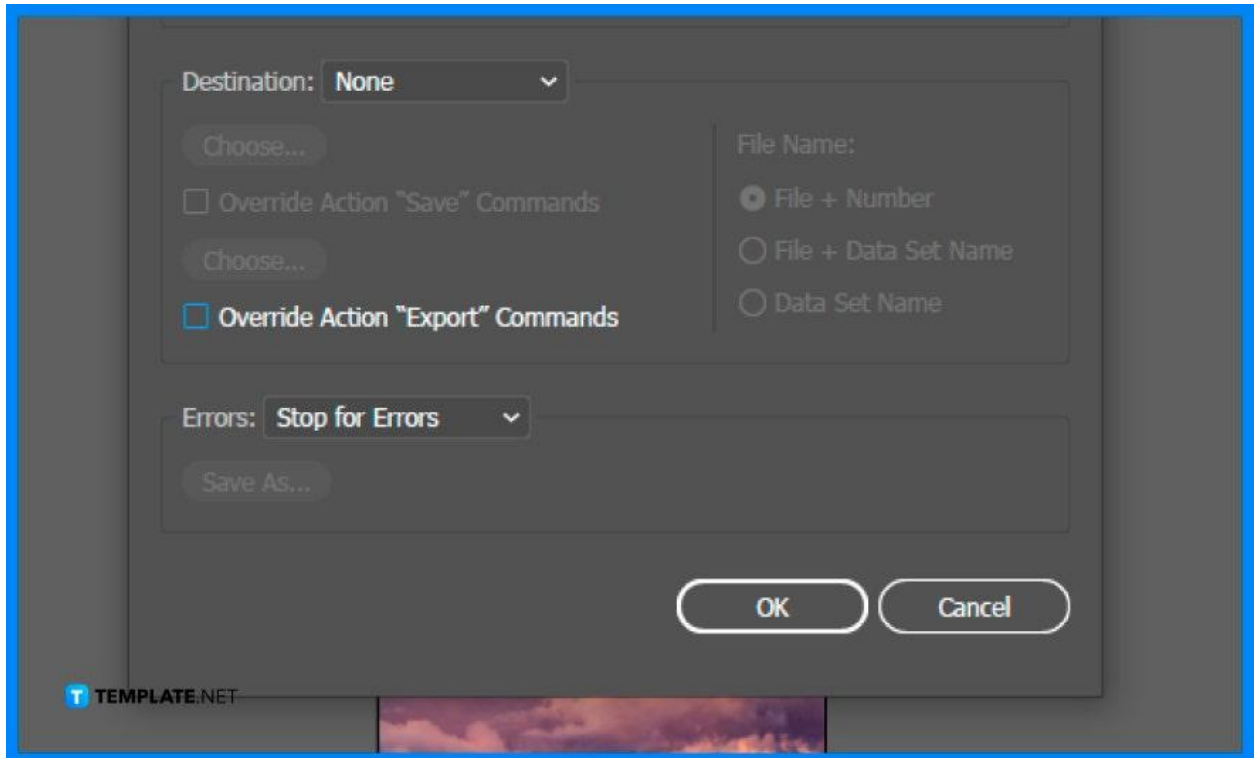
Navigate to the Adobe Illustrator Files folder, and then click Choose for Mac OS use and OK for Windows user.



- **Step 10: Deselect Save and Export Commands**

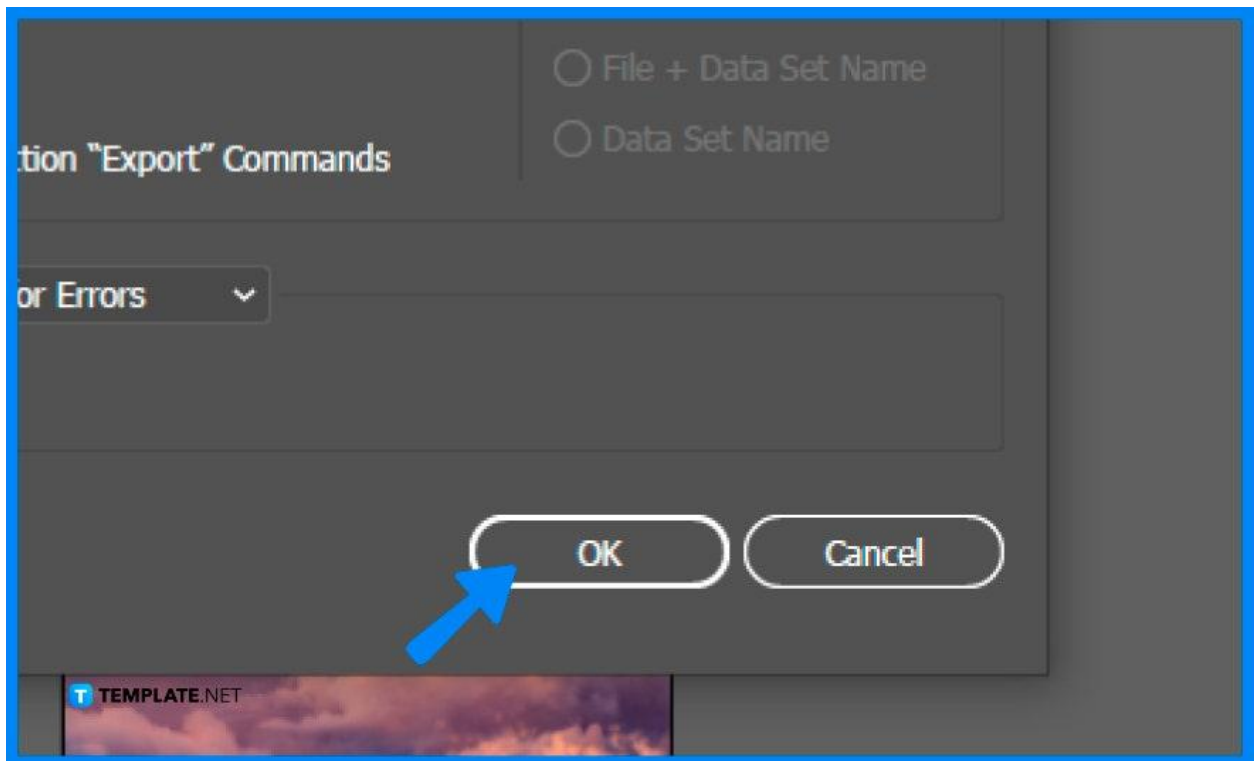
In the Destination section, choose the Folder from the menu, verify that Override Action "Save" Commands and Override Action "Export" Commands are deselected,

after ensuring click Choose, and then do Step 9 all over again.



- **Step 11: Click OK**

After performing all the steps properly, click OK to end the process.



FAQs

Can you batch export in Illustrator

Yes, you can by simply choosing the “Batch” option in the control panel.

What does EPS stand for?

EPS stands for encapsulated postscript, a vector file format used for professional printing and all forms of graphic design.

Can you reduce the file size of an EPS file format?

Yes, you can reduce the file size of an EPS file and still remain good quality.

Where is EPS used?

EPS is best used in logos, illustrations, images, and other graphic designs.

What is the difference between AI and EPS files?

AI files are smaller and more detailed than EPS files; EPS are larger and more flexible.

How can I edit an EPS file?

There is a variety of different methods that you can use; the common ones are using Adobe Illustrator and other free online applications.

What format is EPS?

EPS is a vector file format commonly used for professional printing and large-scale printing paraphernalia.