

How Do I Add PNG in Adobe Premiere Elements

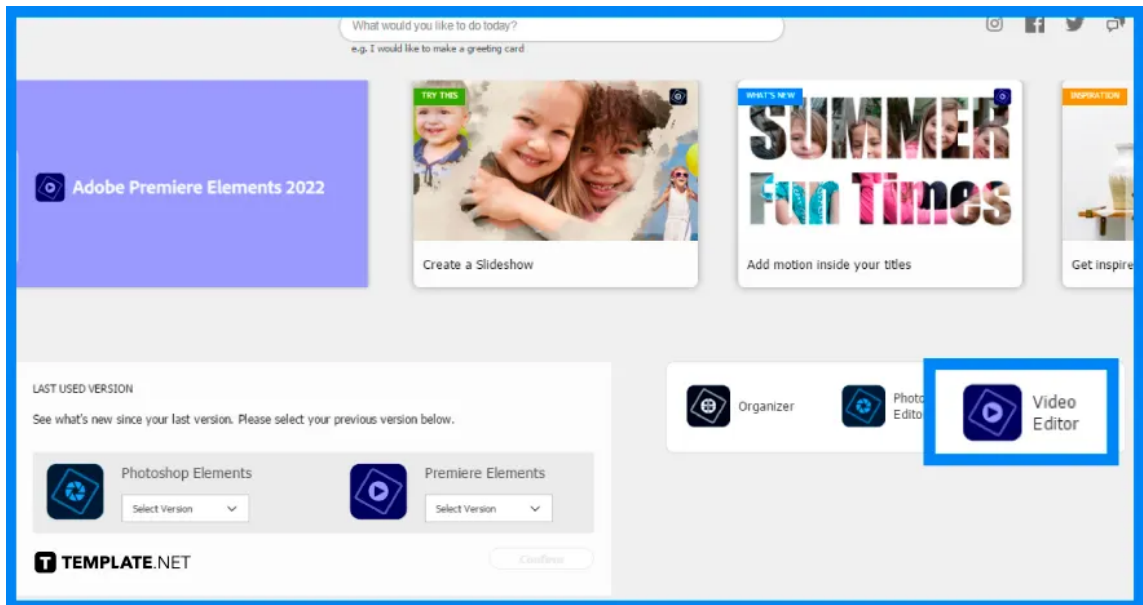
Adobe Premiere is the recommended video editing program for filmmaking, television, and web-based video content. Creative capabilities, as well as linkages with other Adobe applications and services, assist you in turning raw material into completed films and movies.



How Do I Add PNG in Adobe Premiere Elements

When you import media files into Adobe Premiere Elements, they are added to both the Quick view and Expert view timelines. Additionally, there are various methods you can add a PNG in the software.

- **Step 1: Open Adobe Premiere Elements**

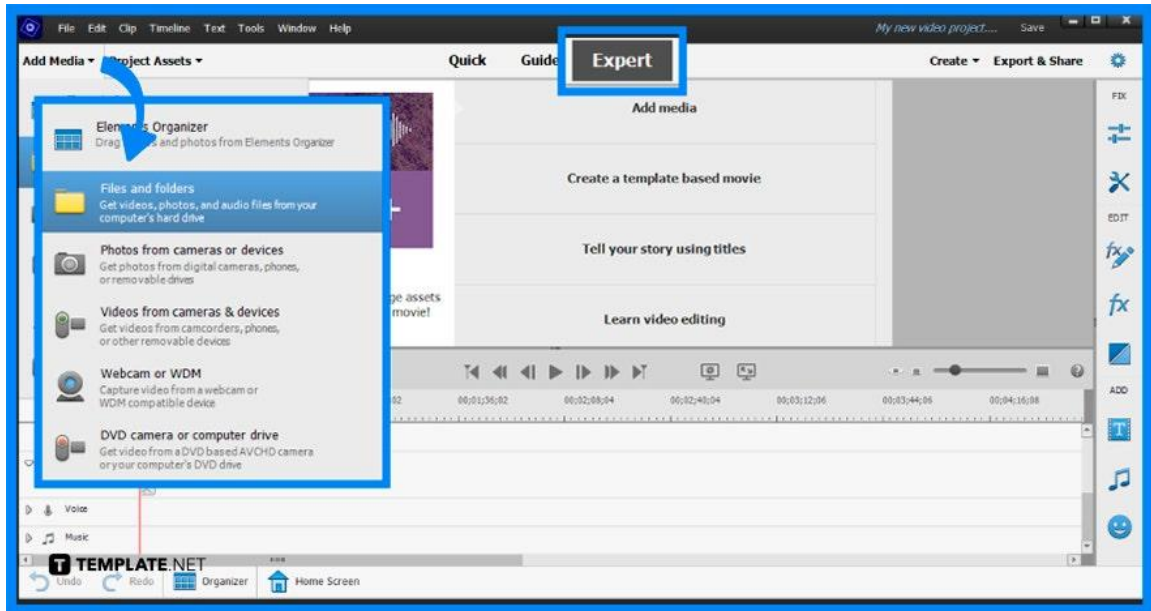


The first step you will need to do is to access and launch your local Adobe Premiere Element software. Click on the icon of where you have it placed on your desktop to open it. The software will not open to the intended program right away so you will need to click on “Video Editor” to open the video editing software.



You can also access older versions of Premiere Elements at the bottom left if you are more familiar with using the previous versions of the software.

- **Step 2: Add Media**

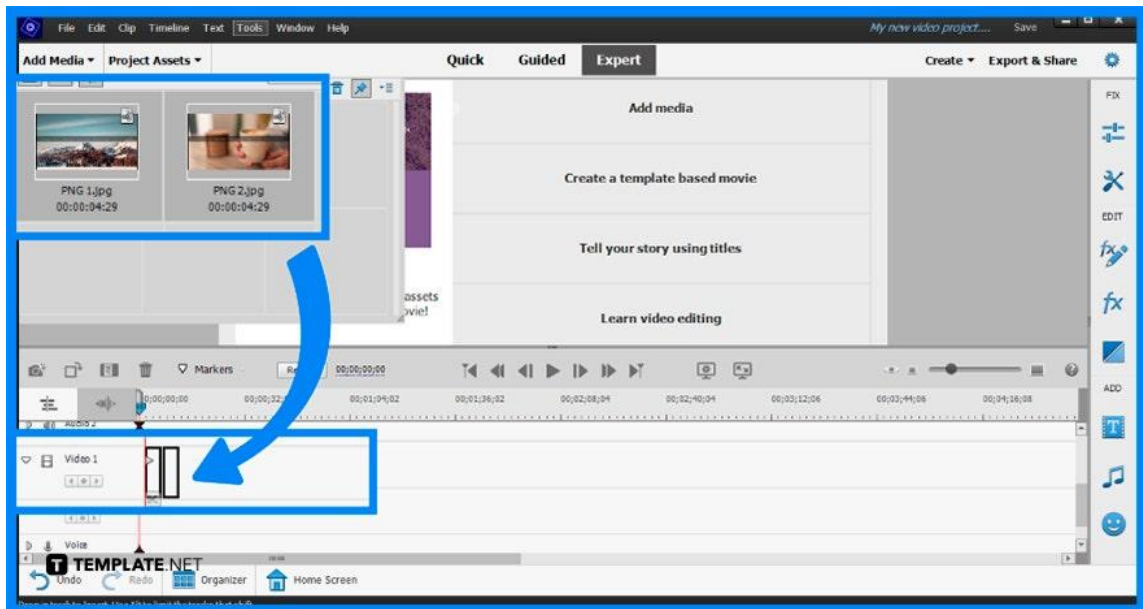


Proceed to the “Expert” selection at the top. To begin adding in PNG, the first Click “Add Media”, followed by “Files And Folders”. Locate and select the desired photos, then click “Open.” If you want to add an entire folder, you can do so by selecting an entire folder and then clicking “Import Folder.” Alternatively, you can also upload media from the “Elements Organizer,” the “Photos from camera or devices,” or “DVD camera or computer drive”.



With the newly opened window, you can select the file format as “PNG File” to filter the specific photos format you want to add.

- **Step 3: Drag Media to Edit**



Once the PNG files are present within your Project Assets panel, you can click on them and drag them over to where it says “Video 1” or other video sections to begin the video editing process.



You can remove files from the Project Assets panel if you don't intend to utilize them entirely.

FAQs

Can I import images into Premiere?

You may import individual still photos or a sequence of still images into Premiere.

How do I overlay a transparent image?

Start by going to “Styles” and click on “Color Overlay”, then choose overlay color and set “Overlay” from the Blend Modes drop-down menu, finally adjust the Opacity slider to your liking.

Is Adobe Premiere Elements easy?

With Quick, Guided, and Expert modes, Premiere Elements caters to every level of user, making it simple for beginner-level video editors to get started on producing good films.

Can Adobe Premiere Elements edit 4K?

Since 4K recording has become common in practically every video shooting equipment, whether DSLRs or phones, Adobe Premiere Elements is highly capable of editing 4K recordings.

Is Premiere Elements the same as Premiere Pro?

Adobe Premiere Elements is a beginner-level video editor that allows users to create films fast with minimal functionality, but Adobe Premiere Pro provides additional editing features that allow professional video editors to create impressive videos.