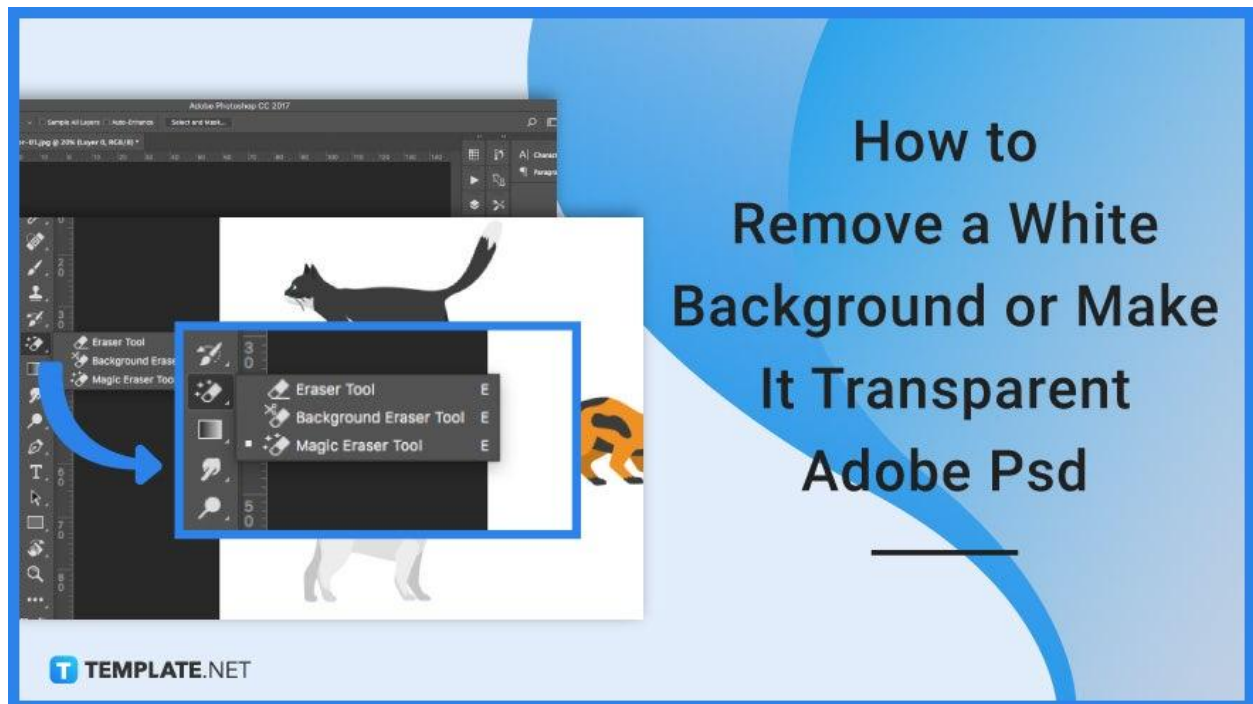


# How to Remove a White Background or Make It Transparent Adobe PSD

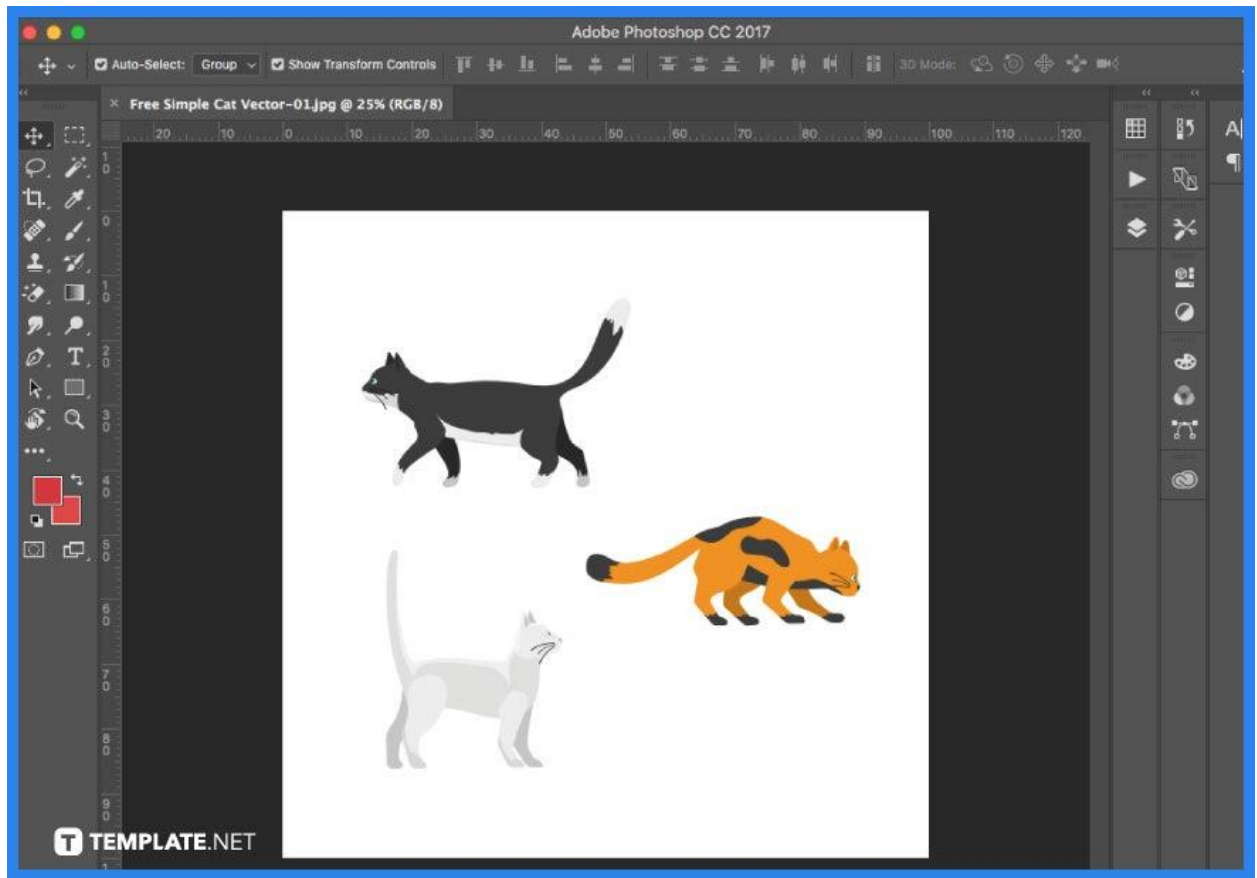
Adobe Photoshop is a convenient tool when you want an image to be cleared of its background. There are several ways to eliminate a white backdrop or any kind of background in Photoshop—all you need is a little skill.



## How to Remove a White Background or Make It Transparent Adobe PSD

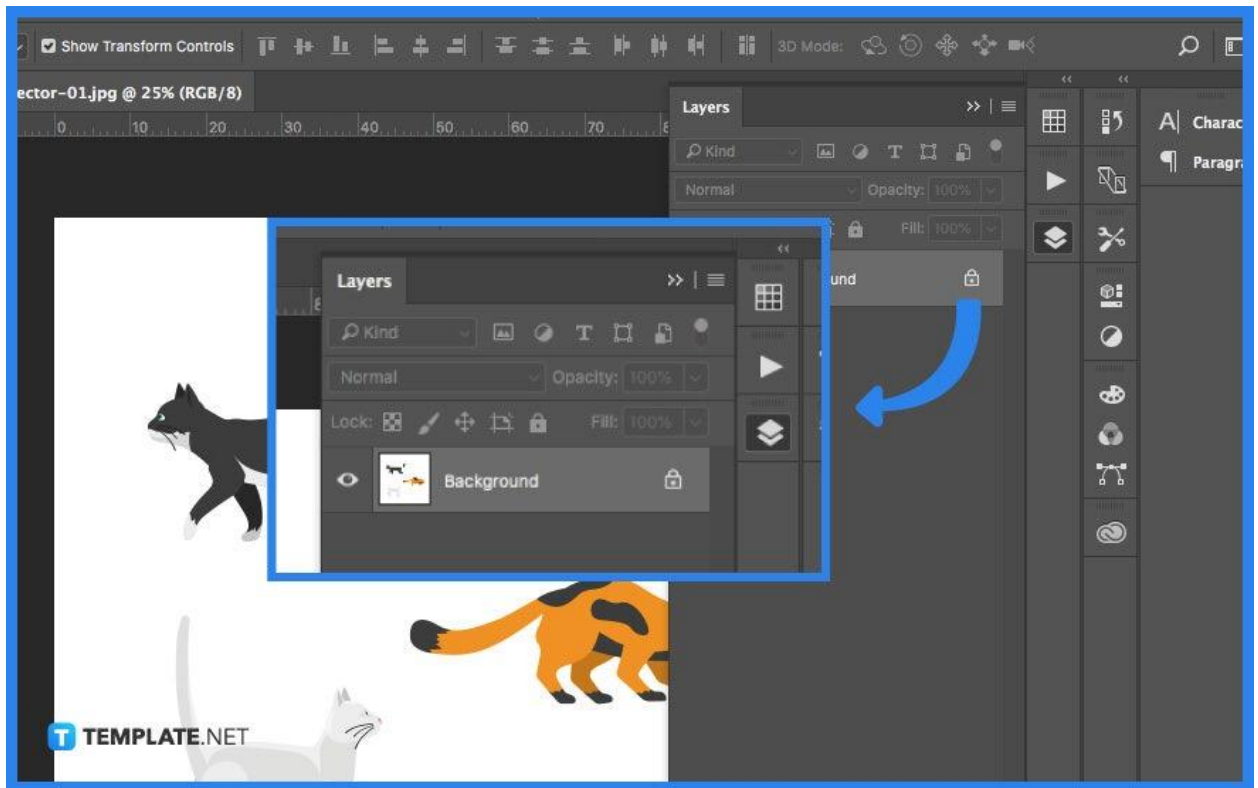
With the flexibility and convenience of Adobe Photoshop, you can erase backgrounds through various options. Find one that works for you and practice it so it can become part of your nature.

- **Step 1: Open Your Image In Photoshop**



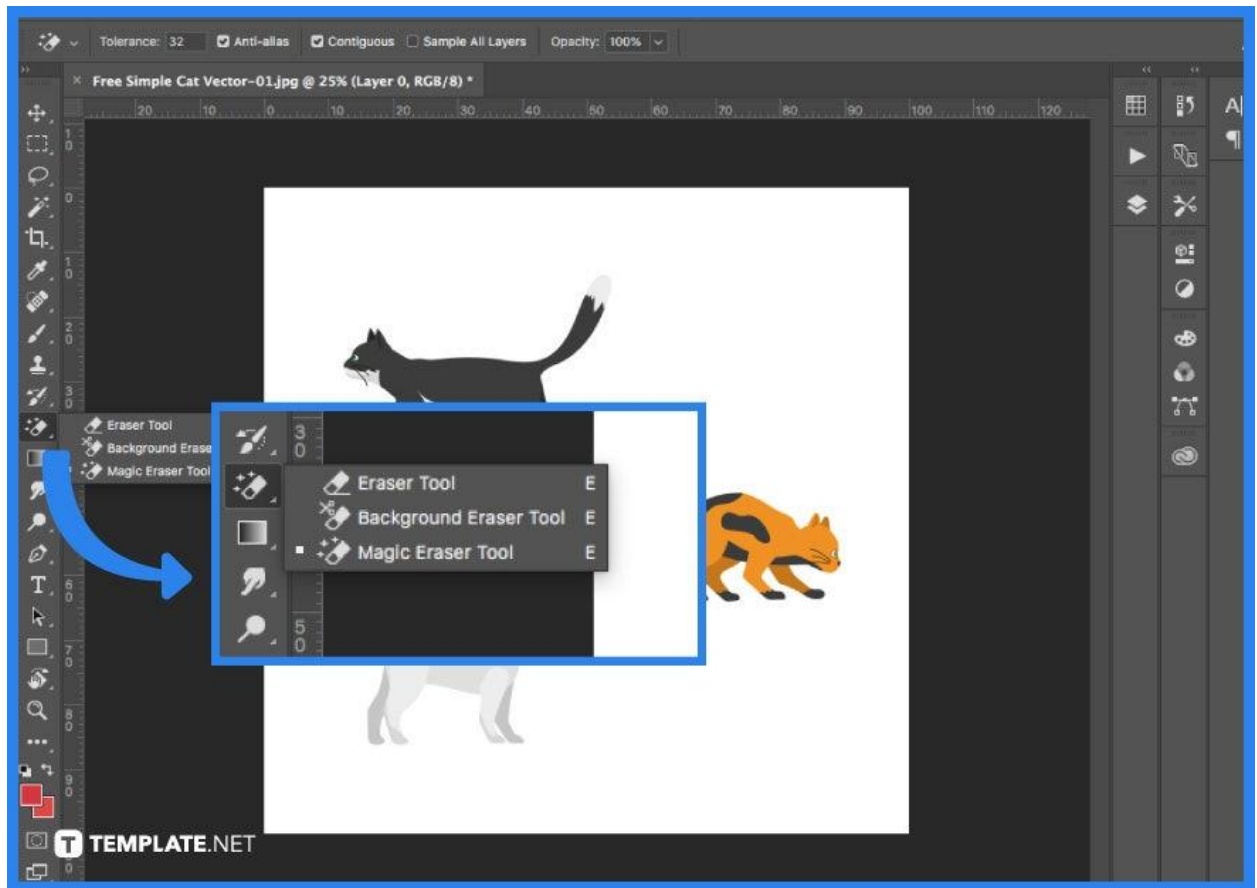
Open Photoshop and choose the image from your folders. Move the image to the middle of the artboard for easier editing.

- **Step 2: Unlock the Layer**



Click the Lock icon that is found in the Layers panel to unlock it and make it an editable layer. Change the name from “layer 0” to something more distinctive. Alternatively, you may duplicate the first layer and then hide it by clicking the Eye icon. This is merely in case you make a mistake that you would want to correct in the future.

- **Step 3a: Use Magic Eraser Tool**

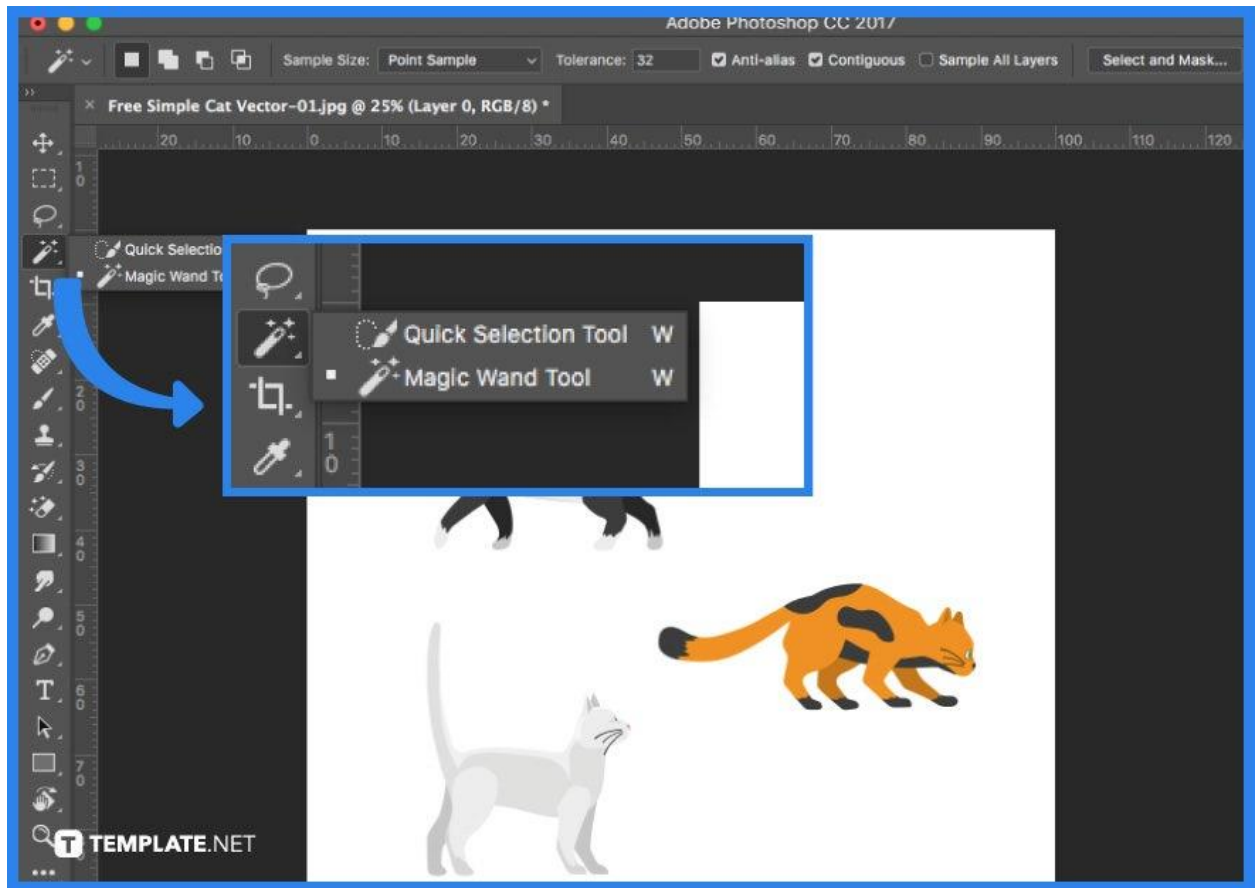


In the tools panel, select the Magic Eraser tool. It's the third option under the eraser tab. Set the options to the following preferences: 30 Tolerance, enable Anti-Aliasing, and 100 percent opacity. Then all you need to do is click on the white background.

- **Step 3b: Utilize the Background Eraser Tool**

The background eraser tool is found under the toolbar's 'Eraser' tab. Since you are removing the white backdrop behind a vivid design, you must use the background eraser tool with the following settings: 300-800 pt font size, once-off or background swatch, limit the locating of edges, 20 percent tolerance, and keep the foreground color safe.

- **Step 3c: Select the Quick Selection Tool**



From the toolbar, select the Quick Selection tool. It is kept with the Magic Wand tool. Change the cursor preferences as follows: New Selection, 100 px in size, 100 percent hardness, and 20 percent spacing. Then you will need to select the object you want to separate from the background.

- **Step 4: Save Your File**

After you do touch-ups and refining, it is finally time to save your work. Under the 'Image' tab, select the trim option. This will remove the excess transparent material surrounding the cutout. By clicking Save for Web under the file tab and selecting PNG, you may export the artwork as a PNG file.



Remember to save it as PNG, otherwise, if you save it as JPEG, the white background will be saved with the image and the transparency won't be seen.

 **TEMPLATE.NET**

## FAQs

### Does PSD allow transparency?

You may now save the file in a variety of formats, including GIF, TIFF, PNG, and, of course, PSD, with a translucent backdrop.

### Is PNG transparent background?

PNG is an abbreviation for Portable Network Graphics, which is a type of image format used by web designers to develop websites because it permits translucent backdrops or semi-transparent pictures.

### Where is the transparent tool in Photoshop?

Select "New" from the top menu and a new window will appear where you may specify the properties of your new Photoshop document then choose "Transparent".

### Can I just buy Photoshop?

Unlike many other apps, you cannot purchase a boxed copy of Photoshop CC; instead, you must subscribe to Adobe Creative Cloud, Adobe's cloud-based software service and after that, you will install Photoshop CC on your PC.

## **How do you add a white background in Photoshop?**

Click the 'Create New Fill or Adjustment Layer' button in the Layers Panel. Choose 'Solid Color' from the top and the color you want for your new solid color backdrop.