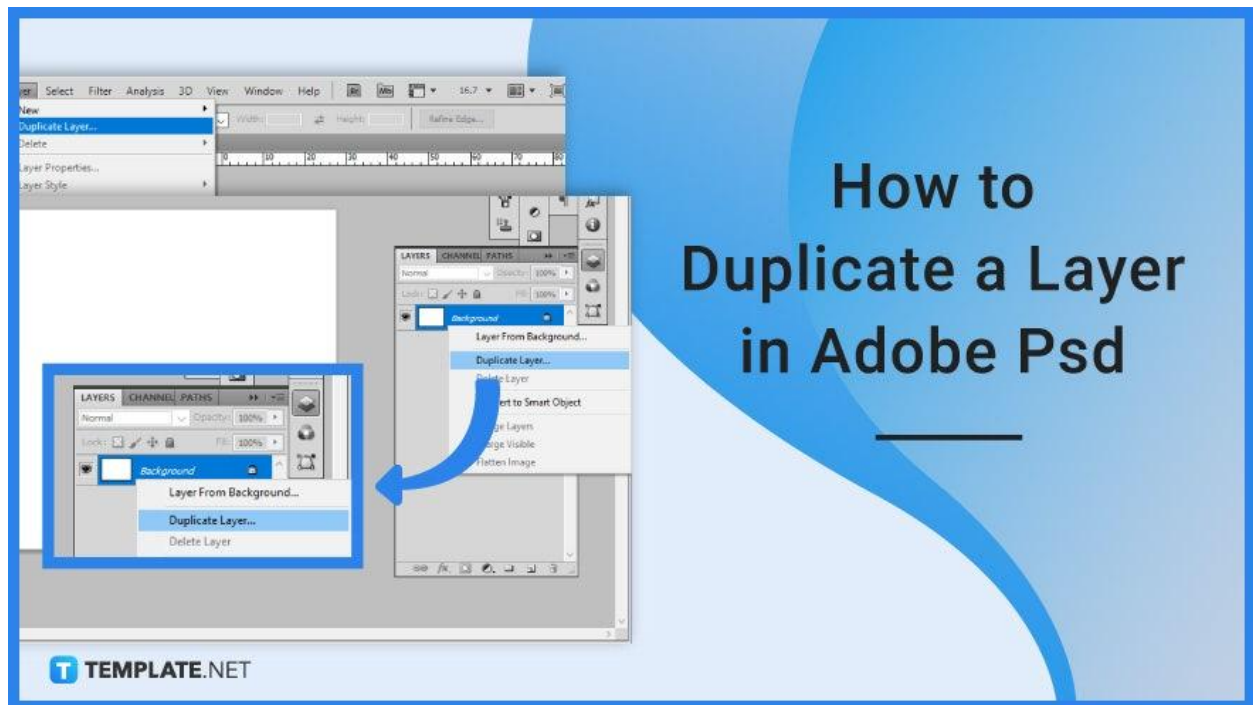


# How to Duplicate a Layer in Adobe PSD

Adobe Photoshop is a versatile tool that allows you to create duplicates of layers within one file. Duplicating a layer allows you to make changes to your artwork without having to create a new one and compare which one works best.



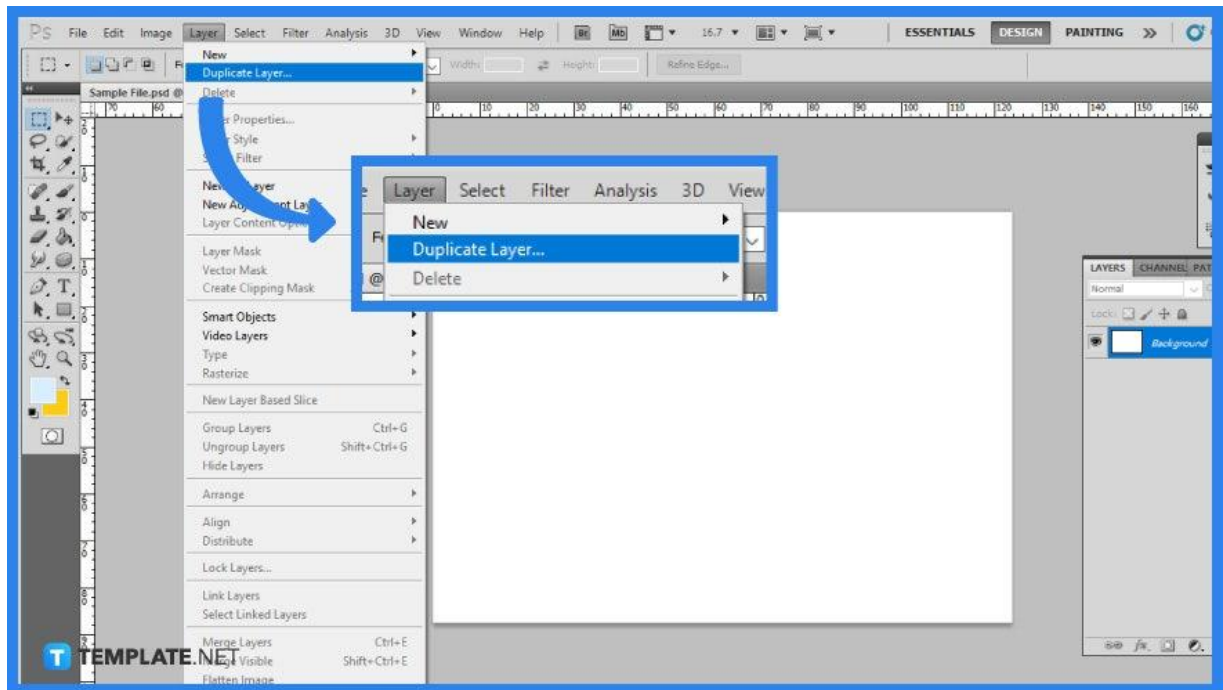
## How to Duplicate a Layer in Adobe PSD

New and proficient users alike will know how taxing it may be to manually open separate files and copy and paste artboards. When working in Adobe Photoshop, you will find yourself duplicating layers or photos rather frequently to save time.

- **Step 1: Open Adobe Photoshop**

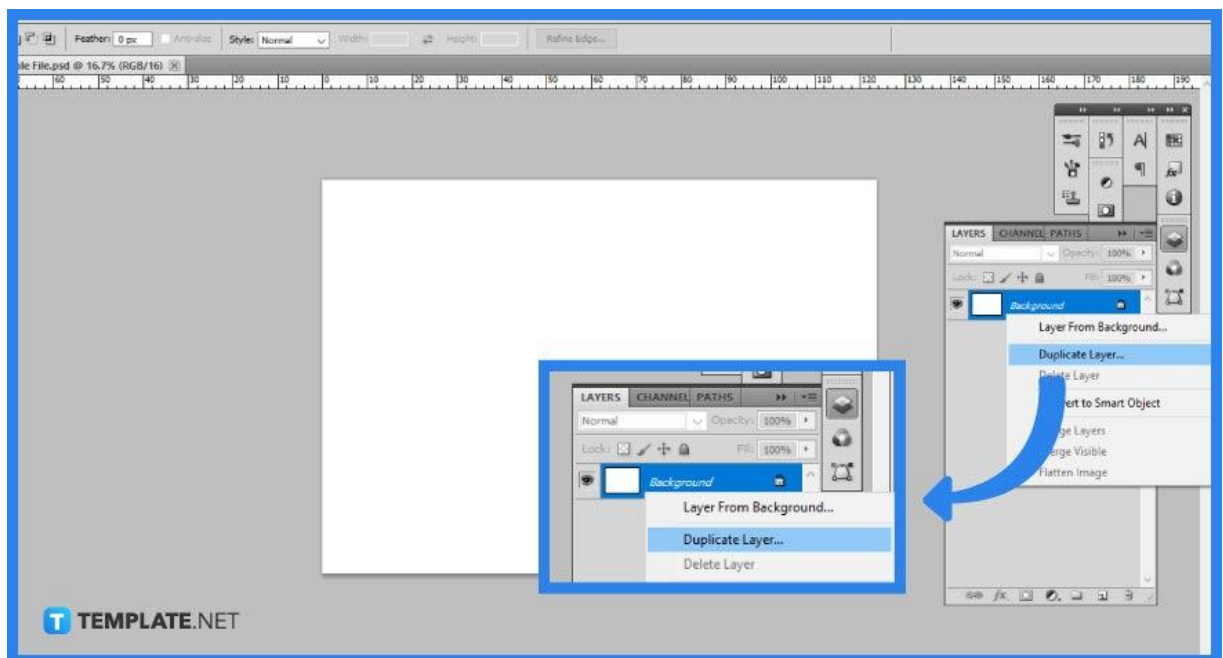
The first step you need to do is to open your Adobe Photoshop software. Once you are presented with a blank display, open the desired file or a sample artboard.

- **Step 2a: Open Layer Menu**



After you have selected and opened your chosen image, ensure that it is the right layer that you want to duplicate. Select 'Layer' from the top menu, then 'Duplicate Layer.'

- **Step 2b: Click on Layers Panel**



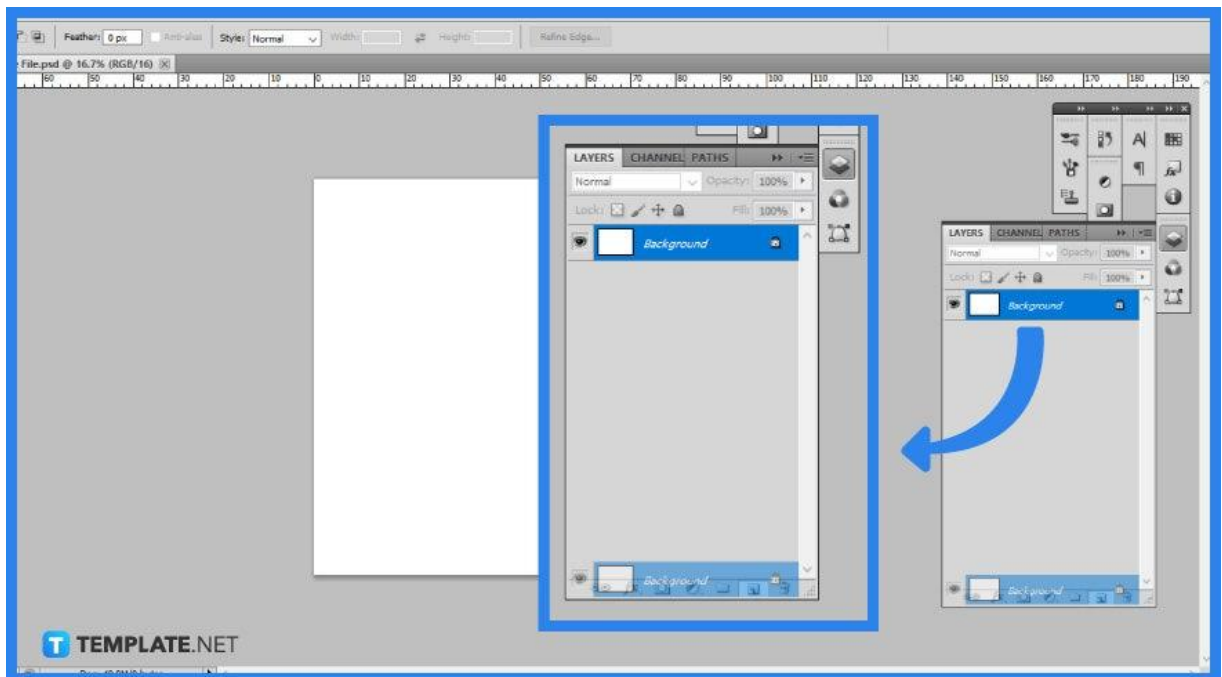
In the Layers panel, right-click on the layer you intend to duplicate. A new window will open up asking you to label the newly duplicated layer as well as the destination. If it is not the layer you want to duplicate, click 'Cancel'.



You can also use the 'Layer' options,  
which is the hidden menu for the Layers tabs.

**T** TEMPLATE.NET

- **Step 2c: Use the Layer Icon**



Drag the layer you want to duplicate to the Create a new layer icon which is the plus symbol at the bottom of the Layers panel. Releasing it over the icon will result in a new duplicate layer. Rename the duplicated layer to avoid confusion.

- **Step 2d: Utilize Keyboard Shortcut**

It is possible to use keyboard shortcuts to save you even more time and efficiency when working. Hold down Command and J for Mac while clicking Ctrl and J is for

Windows. You can easily duplicate the selected layer multiple times. You will come to find that familiarizing yourself with the keyboard shortcut helps to cut time than manually clicking around the software.

## **FAQs**

### **What is an image layer in Photoshop?**

Image Layers are any layers that include image data, so when you create a new file or open a new layer, it will generate an Image Layer by default.

### **What is a mask in Photoshop?**

Layer masking is a nondestructive technique for hiding portions of an image or layer without removing them.

### **What is the shortcut for the duplicate layer on Photoshop?**

To duplicate the selected layer within your opened Photoshop, you either press Command and J for Mac or alternatively Control and J for Windows.

### **Why do we need to duplicate layers in Photoshop?**

You may save a backup copy of your initial image after sharpening, retouching, painting, and other adjustments by duplicating the Background layer.

### **How do you separate merged layers in Photoshop?**

The quickest approach to unmerge the layers is to undo my previous operation, or you may go to 'Edit' in the top menu bar and select 'Undo Merged Layers'.