

Diagrams

Diagrams are generally used in many aspects of our daily lives such as for business, school, personal projects, and many others. Structuring a clear and well-defined diagram for your business, professional work, or personal project is fundamental in representing a specific concept, idea, relationship, anatomy, statistical data, or any topic in an organized manner.

Diagram Definition & Meaning

A diagram refers to a basic drawing or illustration composed of lines and shapes to represent a particular concept, idea, knowledge, or topic.

Diagrams are essential visual communication tools for many people, businesses, and organizations as they are widely used for problem-solving with the application of geometry and space.

What Is a Diagram?

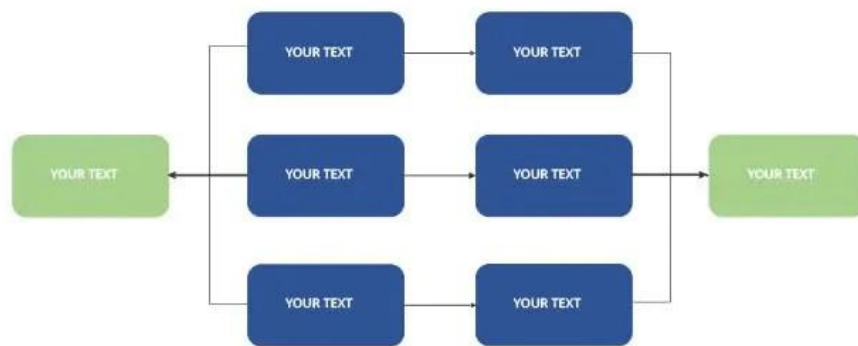
A diagram is a simple abstract and pictorial graphic representation that serves to encode integral information through visualization methods such as graphs, bar charts, drawings, maps, engineering blueprints, architectural sketches, flowcharts, and tables. It demonstrates qualitative data with shapes connected by arrows, lines, and other visual links.

8 Types Of Diagrams

Network Diagram

From engineering to computer programming to project management, network diagrams are used in multiple ways such as for scheduling, showing the logical relationships between the activities on the schedule for a certain project. A [network diagram](#) is important to delineate the sequence of activities so that the actual schedule dates can be calculated.

Network Diagram



Plot Diagram

Plot diagrams like scatter or probability distributions are mainly used to display correlations between variables along a trend line. As an organizational tool, a [plot diagram](#) focuses on depicting a pyramid or triangular shape to map the events in a story, guiding students and others to build literary comprehension and appreciation.

Plot Diagram

Title of the story:

Name:

CLIMAX

Rising Action

Falling Action

Exposition

Protagonist:
Antagonist:
Setting time:
Internal Conflict:

Author's Name:
Symbolism:
Foreshadowing:
Irony:



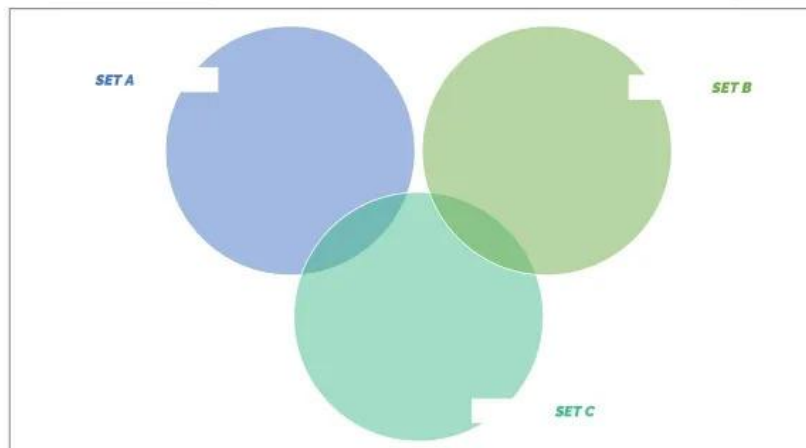
Venn Diagram

With the use of overlapping circles, a [Venn diagram](#) is a type of diagram that clearly illustrates the logical relationships between two or more groups of ideas, concepts, topics, or other things. Each circle demonstrates something that you want to make a comparison and contrast, while you write the similarities of the two things in the area where the two circles intersect.

Venn diagram

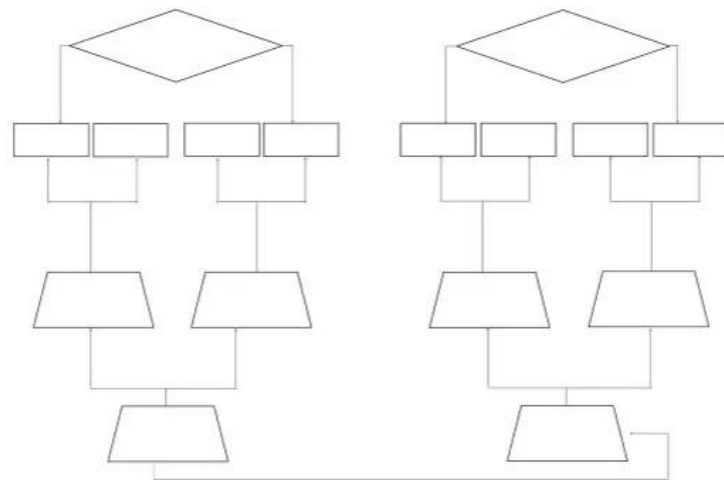
Name: _____

Date: _____



Process Flow Diagram

One of the extensively used quality management tools is the [process flow diagram](#) or flow chart as it captures the flow of a process using the standard flow chart shapes such as diamonds for decision points and rectangles for processes. It is an effective visual representation of a process from beginning to end which enables the user to manipulate the tasks within the process flow for optimal results, especially to design and improve processes.



Basic Process Flow Chart



Affinity Diagram

An [affinity diagram](#) is a type of diagram that is used for wide-ranging projects for the organization of ideas on customer requirements and for solving quality problems. Mostly used in a brainstorming session, it generates, arranges, and centralizes information associated with a complicated issue, product, or process.

AFFINITY DIAGRAM

In today's business industry, you need to be certain that your business is flexible enough to cope up with the never ending changes and demands of the public. Many businesses may experience slight difficulties and problems when trying to come up with a new idea for a product or service that they want to introduce to their customers. There may be instances where members of the group who take part in this brainstorming process have ideas or opinions that vary greatly from the rest. To connect these ideas and enhance the group's planning process, a certain diagram known as the affinity diagram is utilized.

What is an affinity diagram?

An affinity diagram is a tool, method or process for improvement that helps establish clearer and more concrete connections between and among a large group of data. This large group of data is often obtained subsequent to a team's brainstorming session and is comprised of various opinions, ideas, issues, questions, suggestions and so on that are related to the subject matter being discussed. Connections are established if majority or all of the team members believe certain ideas can be closely related.

Why should teams opt for the affinity diagram after a brainstorming session?

The advantage of the affinity process is that it is a creative method to encourage each team member to take part in troubleshooting issues by establishing and enforcing order. Not all individuals within a certain group can agree on everything. Different people will have different opinions or thoughts about the subject matter. This variety of ideas may create confusion at first. However, with the aid of the affinity diagram and with the full cooperation of everyone in the team, these ideas can be connected and transformed into a well-organized strategy.

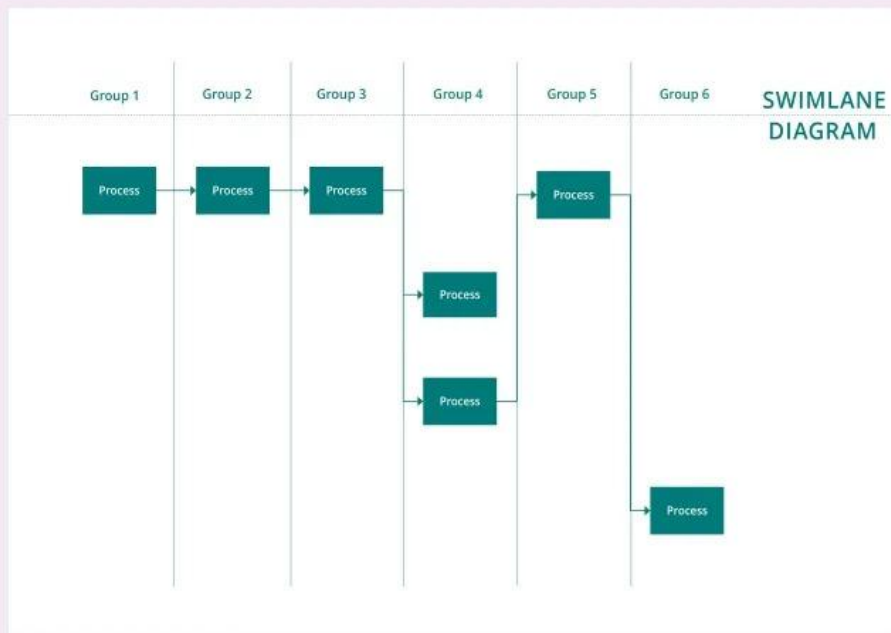
What can the affinity diagram be used for?

1. It can be used to establish and incorporate a sturdier and more cohesive framework of ideas from a large and vast amount of data and information.
2. It can aid in addressing a complex problem by breaking it down into different categories or sections which can later on be tackled one by one.
3. It will be used to acquire a final agreement or statement from the group as a whole regarding the subject matter.



Swim Lane Diagram

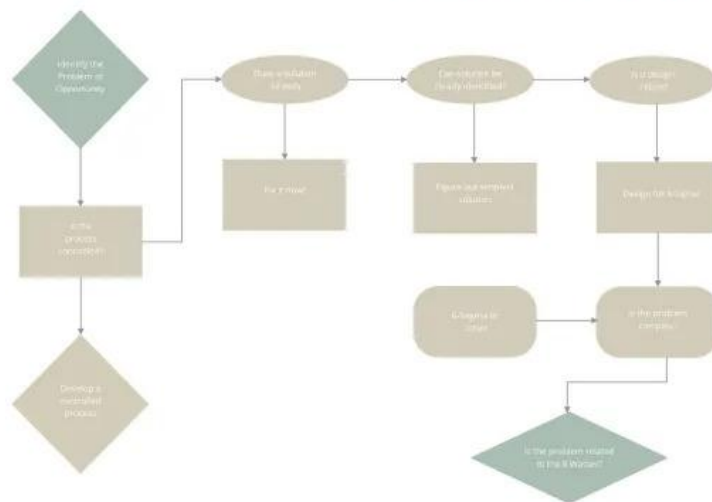
[Swim lane diagram](#) is used by businesses and professionals to portray a workflow process from start to finish and informs who is responsible for each method or step in the process. It is also used to record and analyze current conditions of processes and to make a proposal of desired future conditions which eradicate constraints and wasteful practices.



Workflow Diagram

A [workflow diagram](#) is essential for many companies, organizations, professionals, and individuals as it gives a clear graphic representation of the business process with the use of standardized shapes and symbols to depict step by step of how one's work is accomplished from the start to finish. It is a crucial management tool for comprehensive work analysis and evaluation.

WORK FLOW CHART



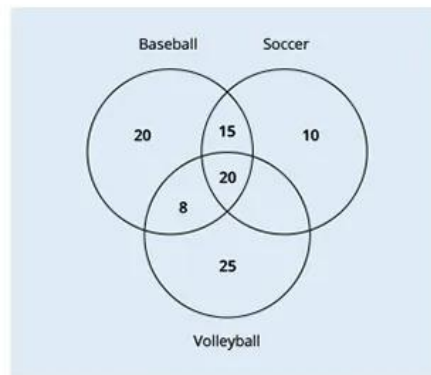
Venn Diagram Worksheet

Use a simple and concise [Venn diagram worksheet](#) for students in your school. It is commonly used to establish theory on logical relationships for mathematics, and other subjects while using overlapping circles.

VENN DIAGRAM WORKSHEET

Name: _____ Score: _____
Teacher: _____ Date: _____

Answer the Question based on Venn diagram



- a) How many Students like both Baseball and Soccer? _____
- b) How Many Students like Volleyball? _____
- c) How Many Students Like Volleyball, Soccer and Baseball? _____
- d) How Many Students do not like volleyball? _____
- e) How Many Students like Soccer and Volleyball? _____
- f) How Many Students Like Either Baseball or Soccer? _____



Diagram Uses, Purpose, Importance

A diagram offers various uses based on the purpose of a business firm, an individual, or a professional. You can see different types of diagrams like dimensional diagrams, circuit diagrams, infographic diagrams, software diagrams, school diagrams, system diagrams, and mapping diagrams in a wide array of fields and industries such as in academic institutions, companies, and others. Below is a list of the common uses, purposes, and importance of diagrams.

Maintain Audience Attention

Developing a compelling diagram for your presentation is fundamental for businesses and professionals because it maintains the attention of your audience. It provides the viewers with a birds-eye perspective of the information in order for them to easily absorb the information that you want to convey in your presentation, making your concepts simple and easy to understand.

Effective Concept Visualization

Diagrams like landscape diagrams, architecture diagrams, website diagrams, plant cell diagrams, human anatomy diagrams, brain diagrams, and other science diagrams are mainly used to provide effective concept visualization of your topic or material. It allows complex ideas and topics to be simplified through visual representation, helping the audience to fully understand the matter being discussed at a single glance.

Accuracy, Speed, and Comprehension

Many companies, organizations, and individuals use well-structured diagrams such as UML diagrams to communicate fundamental information through accurate and quick graphic design. They use diagrams to explain data, processes, or system functions quickly without using a long written narrative or other resources.

Saves Time and Effort

It is very time-consuming if you will go through numerical data to draw valuable references from it. With diagrams, you can save time and effort since they are easily understood.

Comprehensive Analysis and Forecast

Creating diagrams are beneficial for making a clear and comprehensive analysis of a specific matter. Whether you are making a diagram for business processes, project activities, or a certain idea or topic, a diagram enables users to make comparisons, in-depth analysis, and detect trends in the data to have a forecast of upcoming trends.

What's In A Diagram? Parts?

Title

Write the title your diagram. Use clear and simple language when writing your diagram title as it lets you know on what the diagram is all about.

Label

Include a label in your diagram. It is a word or phrase assigned to a specific part of a diagram to help your audience identify it. It is usually labeled by an arrow or line connecting the part of the diagram to the word being described as a label.

Captions

Add short phrases or sentences to your diagram which are located at the bottom part of a diagram. Provide additional information about what your audience needs to know.

Symbols

Use some symbols in your diagram to guide your audience in your presentation such as the oval shape, rectangle shape, parallelogram shape, diamond shape, and arrow shape. Draw an oval shape to signify the start or end, or draw a rectangle shape or box to represent a process.

How To Design A Diagram?

1. Choose a [Diagram Size](#)
2. Think about the purpose of your diagram
3. Select the [Diagram Template](#)
4. Know your target audience
5. Use a simple and cohesive color scheme and typography
6. Add labels, boxes, captions, and symbols
7. Align your items in a systematic manner
8. Adjust, edit and revise other visual and text elements if necessary
9. Finalize and download your diagram

You can also refer to the informative article below on how to create diagrams for business and personal use:

- [How to Create Advanced Diagrams in Google Drawings](#)

Diagram vs. Gantt Chart

A diagram is a simple flowchart that explains data, process, system or workflow in sequence.

A Gantt chart is a type of bar chart that visually depicts the schedule of a project while focusing on tasks and time management.

What's the Difference Between a Diagram, Venn Diagram & Tree Diagram?

A diagram is a simple data visualization tool used in project management and quality improvement planning to help businesses, organizations, and individuals to steer projects in the right direction while ensuring optimal quality deliverables.

A Venn diagram is a pictorial representation of overlapping circles which shows similarities and differences between two or more ideas, topics, or things.

A tree diagram is a type of diagram that uses branches to illustrate the varying outcomes of experiments and turns complicated probability questions easy to visualize and comprehend.

Diagram Sizes

Diagrams have varying standard sizes both in digital and physical formats. The [diagram size](#) and format are based on the use and purpose of the business or organization.

Format	Size in Millimeters	Size in Inches
Letter (US)	215.9 x 279.4	8.5 x 11
Legal (US)	215.9 x 355.6	8.5 x 14
Tabloid	279.4 x 431.8	11 x 17
A1	594 x 841	23.375 x 33.125
A2	420 x 594	16.5 x 23.375
A3	297 x 420	11.69 x 16.53
A4	210 x 297	8.26 x 11.69

Diagram Ideas & Examples

There are numerous ways to demonstrate your creativity when it comes to designing diagrams. Check out the following details for more [diagram ideas](#) and design inspiration.

- Presentation Diagram Ideas and Examples
- Stories Diagram Ideas and Examples
- School Diagram Ideas and Examples
- Fantasy Diagram Ideas and Examples
- Classroom Diagram Ideas and Examples
- Novels Diagram Ideas and Examples
- Unique Diagram Ideas and Examples
- Mind Diagram Ideas and Examples
- Process Diagram Ideas and Examples

FAQ

What is the concept of a diagram?

The concept of a diagram is a graphic design tool that explains a specific idea, process, or material by using a drawing or illustration to indicate arrangement and relationships.

What is the essence of a diagram?

The essence of a diagram can be observed as a display that portrays relationships and abstract information, a form of visual content formatting devices, and it is composed of building blocks like geometrical shapes and other figures.

How do you make an effective diagram?

If you need to make an effective diagram, choose the appropriate type of diagram according to your project needs, follow the basic standards, use a cohesive color theme, typography, and size, add legends or guides, be consistent with the lines, align all items properly, and keep some whitespaces in your diagram.

What do diagrams usually show?

Diagrams usually show different parts of a specific concept, idea, topic or object and how exactly they work together.

What is a context-level diagram?

Also known as level 0 data-flow diagram, a context-level diagram is a type of diagram that clearly defines the boundaries of a software system and identifies the information flows between the system and external entities, as well as other system processes.

How do you share diagrams?

When you share diagrams with other people for team collaboration, open the diagram file you have in a document app like Google Drive, right-click on the diagram you want to share, select Share from the context menu, go to the Get Link dialog, click on Change to anyone with the link, and then click done.

What is a sequence diagram in UML?

A sequence diagram in UML is a type of interactive diagram commonly used by business professionals and software developers as it explains how and in what specific order a group of objects works together.

Why do we need a data diagram?

A data diagram is important because it helps us to fully understand, upgrade, and implement new processes or systems in our business or organization.

What is a working diagram?

Also referred to as workflow diagram, a working diagram is a graphic overview of business processes and systems.

What are the levels in a data flow diagram?

The common levels in a data flow diagram are 0-level DFD, 1-level DFD, 2-level DFD, and beyond.