
STATE OF ARIZONA TITLE XX SOCIAL SERVICES BLOCK GRANT PLAN July 1, 2019- June 30, 2020



THE ARIZONA DEPARTMENT OF ECONOMIC SECURITY

Equal Opportunity Employer/Program • Under Titles VI and VII of the Civil Rights Act of 1964 (Title VI & VII), and the Americans with Disabilities Act of 1990 (ADA), Section 504 of the Rehabilitation Act of 1973, the Age Discrimination Act of 1975, and Title II of the Genetic Information Nondiscrimination Act (GINA) of 2008; the Department prohibits discrimination in admissions, programs, services, activities, or employment based on race, color, religion, sex, national origin, age, disability, genetics and retaliation. The Department must make a reasonable accommodation to allow a person with a disability to take part in a program, service or activity. For example, this means if necessary, the Department must provide sign language interpreters for people who are deaf, a wheelchair accessible location, or enlarged print materials. It also means that the Department will take any other reasonable action that allows you to take part in and understand a program or activity, including making reasonable changes to an activity. If you believe that you will not be able to understand or take part in a program or activity because of your disability, please let us know of your disability needs in advance if at all possible. To request this document in alternative format or for further information about this policy, contact your local office; TTY/TDD Services: 7-1-1. • Free language assistance for DES services is available upon request. • Ayuda gratuita con traducciones relacionadas con los servicios del DES está disponible a solicitud del cliente.

TABLE OF CONTENTS

SUBJECT	PAGE
List of Figures	iv
Appendices.....	iv
Introduction	1
SSBG Planning Level.....	1
TANF Block Grant Funds Transferred to the SSBG.....	1
SSBG Service Goals	2
Evaluation.....	2
Reporting on Activities Funded	3
SSBG Planning Process	3
State Planned Services	3
Locally Planned Services	3
Arizona Tribal Entities	4
Geographic Areas	5
Financial Operations System	5
Proof of Audit	5
Public Comment and Review	5
Plan Amendment.....	8
Catalog of Services	8
Federal Uniform Definitions of Services Titles	8
Arizona Dictionary and Taxonomy of Human Services	9
Crosswalk for Federal SSBG Services to Arizona Taxonomy.....	21
Service Availability.....	26
Local and State Planned Levels.....	29
Planned Service Allocations Listed by Federal Service Definitions.....	51

LIST OF FIGURES

SUBJECT	PAGE
Figure 1: Geographic Planning Areas (State Map).....	6
Figure 2: ADES Organization Chart.....	7

APPENDICES

SUBJECT	PAGE
Appendix A. Public Notice.....	59
Public Notice.....	60
Appendix B. Certifications.....	61
Certification Regarding Lobbying	62
Certification Regarding Drug-Free Workplace Requirements.....	63
Certification Regarding Debarment, Suspension And Other Responsibility Matters	66
Certification Regarding Environmental Tobacco Smoke	69
Appendix C. Pre-Expenditure Report Form.....	70

STATE OF ARIZONA

Title XX Social Services Block Grant Plan

July 1, 2019 – June 30, 2020

Introduction

This document provides information on the types of activities supported and the categories or characteristics of individuals served under the provisions of the Omnibus Budget Reconciliation Act of 1981, Public Law 97-35, Subtitle C - Block Grants for Social Services, which amends Title XX of the Social Security Act. The Arizona Department of Economic Security (ADES) under the statutory provisions of the law administers the Arizona Social Services Block Grant (SSBG) Plan (the Plan).

The program period covered corresponds to the State Fiscal Year (SFY) 2020, which begins on July 1, 2019, and ends June 30, 2020. SFY 2020 overlaps portions of Federal Fiscal Year (FFY) 2019 and FFY 2020, which run from October 1 through September 30.

SSBG Planning Level

The specific formula used to estimate the amount of federal SSBG funds that are available for funding the planned services during Arizona's SFY 2020 is calculated from one-fourth of Arizona's FFY 2019 estimated allocation and three-fourths of Arizona's estimated FFY 2020 allocation. Since the actual allotment available to Arizona is determined pursuant to Congressional and Presidential approval, the services and planning levels identified are estimates. An amount of \$19,940,731 Temporary Assistance to Needy Families (TANF) Block Grant funds projected to be transferred to the SFY 2020 SSBG is included in the Plan in addition to the SFY 2020 estimated SSBG funding level of \$33,867,948 for a total combined planning level of \$53,808,679.

The planned SFY 2020 expenditures are detailed on spreadsheets that begin on page 29 of the Plan. Spreadsheets are displayed for the Arizona Department of Child Safety (ADCS) and each of the ADES Administrations/Divisions that plan to use SSBG funding for SFY 2020. The spreadsheets show the Services, Target Group(s), Status Eligibility, and Funding for each of the Locally Planned and State Planned SSBG services. This format allows ADES, the Arizona Department of Child Safety (ADCS), local entities, and the U.S. Department of Health and Human Services (DHHS) to see the planned uses for SSBG funds.

TANF Block Grant Funds Transferred to the SSBG

Laws 2018, Chapter 276, Section 17 allows up to ten percent of TANF Block Grant funds to be transferred to SSBG for child safety and support services funding. The Department is estimating a transfer of \$19,940,731 of TANF funds for child safety and support services which is below ten percent of TANF Block Grant funds in accordance with the Arizona statute.

SSBG Service Goals

The mission of ADES is to make Arizona stronger by helping Arizonans reach their potential through temporary assistance for those in need, and care for the vulnerable. The ADES True North statement is that all Arizonans who qualify receive timely ADES services and achieve their potential. The goals of ADES are to: serve Arizonans with integrity, humility and kindness; support Arizonans to reach their potential through social services that train, rehabilitate, and connect them with job creators; provide temporary assistance to Arizonans in need while they work toward greater self-sufficiency; provide children with food, health care, and parental financial support; provide services to individuals with disabilities; and protect the vulnerable by investigating allegations of abuse, neglect and exploitation.

With the implementation of SSBG, ADES was designated by the Governor as the administering agency. Among the programs funded by SSBG are services to children. These services are provided both by private agencies under contract and directly by the State. On May 29, 2014, A.R.S. § 8-451 established ADCS with the primary purpose of protecting children. ADCS is comprised of the State Child Welfare Program previously administered by ADES, including child protective services, prevention and in home services, Foster Care, Adoption, the Comprehensive Medical and Dental Program, and the Office of Child Welfare Investigations. Recognizing each Department's desire to do comprehensive planning for its populations, ADES and ADCS developed and signed an agreement governing the administration of the Social Services Block Grant.

Arizona's SSBG-funded services will be directed toward one or more of the following federal goals:

- I. Achieve or maintain economic self-support to prevent, reduce, or eliminate dependency;
- II. Achieve or maintain self-sufficiency, including reduction or prevention of dependency;
- III. Prevent or remedy neglect, abuse, or exploitation of children and adults unable to protect their own interests or preserve, rehabilitate, or reunite families;
- IV. Prevent or reduce inappropriate institutional care by providing for community-based care, home-based care, or other forms of less intensive care; and
- V. Secure referral or admission for institutional care when other forms of care are not appropriate or providing services to individuals in institutions.

The goals of ADES, the purpose of ADCS, and the five federal SSBG goals are very much aligned particularly in the areas of achieving or maintaining economic self-support to prevent, reduce, or eliminate dependency and preventing and remedying neglect, abuse, or exploitation of children and adults unable to protect their own interests or preserving, rehabilitating, or reuniting families.

Evaluation

The appropriate administrations within ADES and ADCS contracting for services funded by the SSBG have the responsibility of monitoring and evaluating the social service programs funded by the SSBG.

Reporting on Activities Funded

The ADES will prepare a report on activities carried out with funds allocated in the Plan. The report may be used to determine the extent to which funds were spent in a manner consistent with the Plan. The *Annual Report of Services Funded by the Social Services Block Grant for Fiscal Year 2019* will be available to the public after January 1, 2021. To obtain copies of this report, direct your request to the contact person at the telephone number or mailing address listed on page five of this Plan.

SSBG Planning Process

The ADES is responsible for planning and developing the Plan. This includes acquiring input from local planning bodies and tribal entities for locally planned SSBG services. Planning for the use of the available SSBG funds is accomplished as a part of the ADES and ADCS annual budget development process.

State Planned Services

The state level entities participating in Arizona's SSBG planning and reporting process are:

- ADCS
- ADES Child Care Administration (CCA)
- ADES Division of Aging and Adult Services (DAAS)
- ADES Division of Business and Finance (DBF)
- ADES Division of Developmental Disabilities (DDD)
- ADES Workforce Development Administration (WA)
- ADES Rehabilitation Services Administration (RSA)

These entities perform statewide planning activities by coordinating with similar and related programs of other state and local agencies, producing planning documents, fulfilling all federal statutory responsibilities accompanying the administration of programs, and involving local planning agencies in the development of a coordinated planning effort and review of local priorities for incorporation into statewide planning products.

Locally Planned Services

A significant amount of SSBG services are provided primarily through local service-delivery systems contracted by ADES and ADCS to augment state services and to respond to local needs.

Arizona's six Councils of Governments (COGs) are invited to act as a conduit for local input into this portion of the SSBG service-delivery system. The method for obtaining local input varies by COG region and typically includes using broad-based planning committee(s) to identify regional priorities for the use of locally planned funds. The following chart indicates the distribution of the allocation for locally planned services by COG region.

COUNCILS OF GOVERNMENTS	LOCAL PLANNED SERVICES ALLOCATION
Maricopa Association of Governments	\$3,574,092
Pima Association of Governments	1,409,832
Northern Arizona Council of Governments	359,444
Western Arizona Council of Governments	428,971
Central Arizona Association of Governments	394,387
Southeastern Arizona Governments Organization	367,619
TOTAL	\$6,534,345

Arizona Tribal Entities

Tribal nations within Arizona have been established as separate SSBG Planning and Services areas. Technical assistance is provided to tribal nations, upon request, by ADES.

Each participating tribal nation provides a recommendation for the use of a portion of the state's SSBG allocation within their tribal area. The chart below indicates the planned allocations, target group and services for each tribal services area.

NAME OF TRIBE	ALLOCATION
Ak-Chin Indian Community	\$14,791
Cocopah Tribe	\$16,095
Colorado River Indian Tribes	\$24,651
Fort McDowell Yavapai Nation	\$15,357
Fort Mojave Tribe	\$18,117
Gila River Indian Community	\$90,139
Havasupai Tribe	\$15,542
Hopi Tribe	\$91,530
Hualapai Tribe	\$23,968
Kaibab-Paiute Tribe	\$12,974
Pascua Yaqui Tribe	\$24,189
Quechan Tribe	\$22,540
Salt River Pima-Maricopa Indian Community	\$29,041
San Carlos Apache Tribe	\$87,463
San Juan Southern Paiute Tribe	\$11,417
Tonto Apache Tribe	\$12,474
White Mountain Apache Tribe	\$109,170
Yavapai-Apache Nation	\$20,212
Total (Aging and Adult Home-Based Services)	\$639,670
Tohono O'odham Nation (Child Day Care Services)	\$103,012
Navajo Nation (Child Home-Based Services)	\$1,174,045
Gila River Indian Community (Intensive Family Preservation and Reunification Services)	\$17,397
TOTALS	\$1,934,124

Tribal planned services may be contracted with each tribal government for the amount shown. Specific services and eligibility criteria are determined during the contracting process and are not designated in this Plan.

Geographic Areas

The regional areas for which services are planned are identified on the map on page [six](#). The Plan spreadsheets further delineate many services to the county level.

Financial Operations System

Arizona uses a federally approved cost allocation plan. The ADES is responsible for administering a wide variety of grants and therefore utilizes multiple methods to assign costs. Indirect costs are typically assigned using Modified Total Direct Costs methodology. Other methods of assigning costs include random moment samples, caseload counts, square footage, number of full time equivalent employees, and machine hours for client and administrative systems.

Proof of Audit

In accordance with 42 U.S.C. § 1397(e), the Single Audit Report for year ending June 30, 2017, was performed by the State of Arizona, Office of the Auditor General and submitted to the Arizona State Legislature March 15, 2018.

Public Comment and Review

The proposed Arizona State Fiscal Year 2020 SSBG Plan was made available to the public, local planning agencies and tribal entities for review and comment. A public notice was posted on the ADES Internet website on March 15, 2019, requesting public comment. Please refer to Appendix A for a copy of the public notice. All interested persons were afforded an opportunity to provide written comments on the proposed plan to the SSBG Coordinator by close of business on April 5, 2019, at the addresses listed below:

Arizona Department of Economic Security
Rod Huenemann, SSBG Coordinator
Policy and Planning Administration
1789 West Jefferson Street - Mail Drop 1292
Phoenix, Arizona 85007
Telephone: (602) 542-3882
E-mail: SSBGInput@azdes.gov

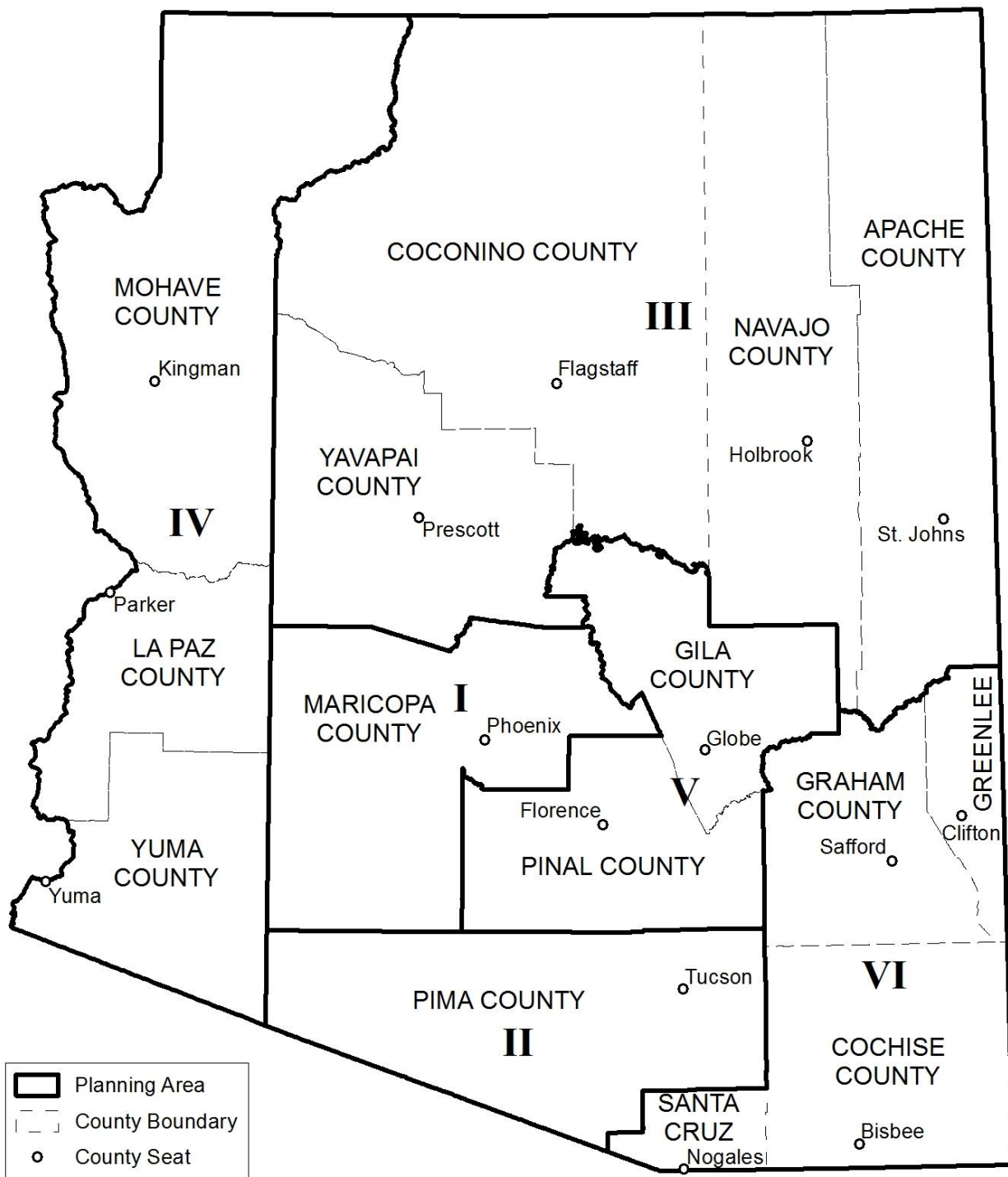
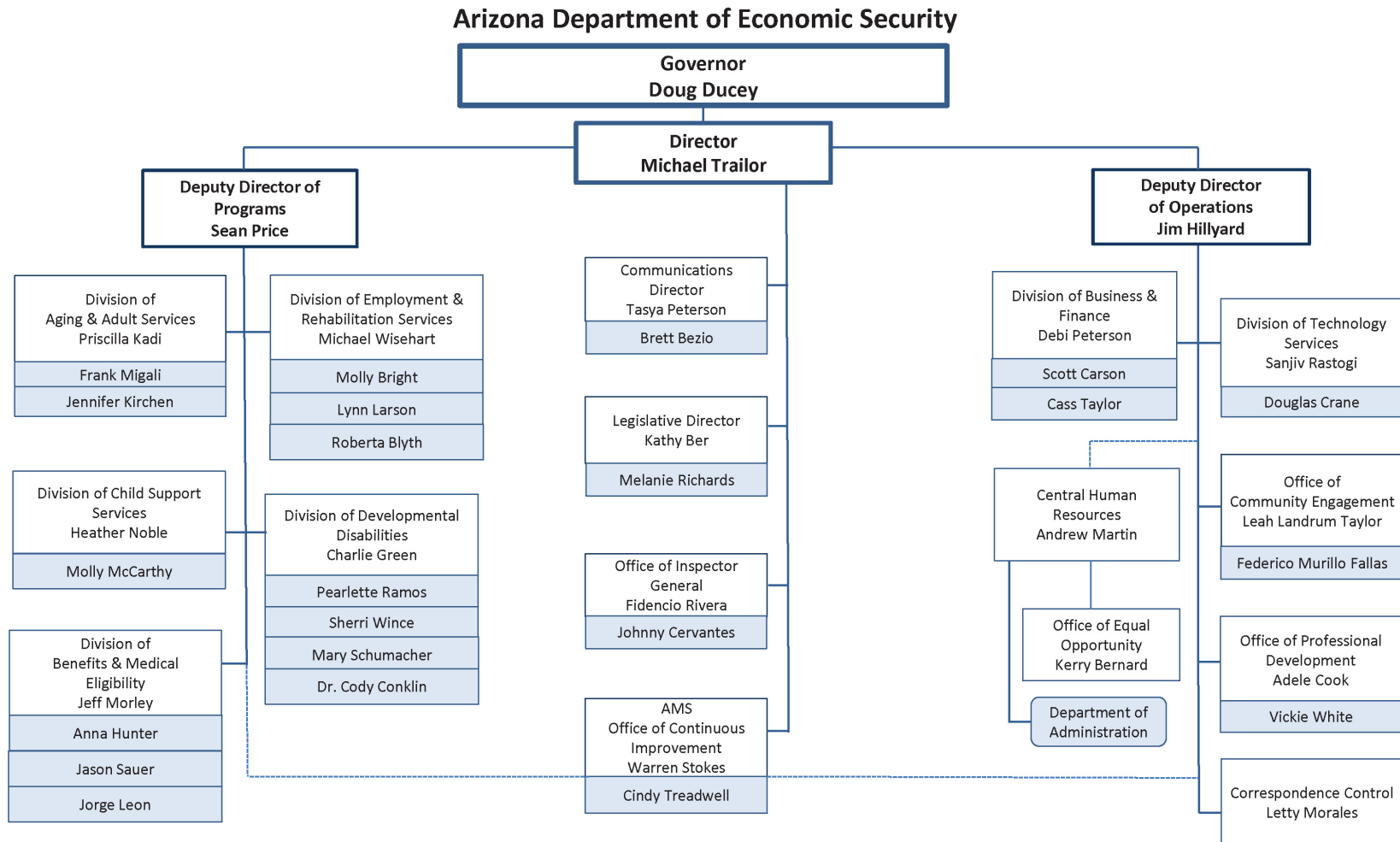


Figure 1: Geographic Planning Areas (State Map)

Figure 2: ADES Organization Chart



Plan Amendment

The Plan may be revised throughout the year as necessary to reflect substantial changes in the activities provided that affect the overall intent of the Plan. Any substantive revisions will be made available for public review and comment from interested persons and federal and public agencies.

Service needs and program decisions may make it necessary to add services or make changes in eligibility, geographic and service availability, or the target group to which the service may be directed. These changes may be made in the ADES' contracting process or direct service-delivery process without modifying the Plan.

Catalog of Services

This section identifies the services that may be funded under terms of SSBG. The services are defined as follows:

- The *Federal Uniform Definitions of Services* is a listing of the 29 titles of services that are required to be used for the purpose of reporting SSBG expenditures annually to the Federal Government. These services are defined in 45 CFR, Part 96, Appendix A of the Code of Federal Regulations. The 29 titles are listed below.
- Services listed in the *Arizona Dictionary and Taxonomy of Human Services* are provided by ADES, ADCS or through purchase-of-service agreements with local community service providers.
- The *Crosswalk for Federal SSBG Services to the Arizona Dictionary and Taxonomy for Human Services* provides a listing of the Federal Service Titles and the corresponding Arizona Taxonomy Service Titles.

Federal Uniform Definitions of Services Titles

1. Adoption Services	18. Legal Services
2. Case Management Services	19. Pregnancy and Parenting Services for Young Parents
3. Congregate Meals	20. Prevention and Intervention Services
4. Counseling Services	21. Protective Services for Adults
5. Day Care Services - Adults	22. Protective Services for Children
6. Day Care Services - Children	23. Recreational Services
7. Education and Training Services	24. Residential Treatment Services
8. Employment Services	25. Special Services for Persons with Developmental or Physical Disabilities, or Persons with Visual or Auditory Impairments
9. Family Planning Services	26. Special Services for Youth Involved In or At Risk of Involvement With Criminal Activity
10. Foster Care Services for Adults	27. Substance Abuse Services
11. Foster Care Services for Children	28. Transportation Services
12. Health Related and Home Health Services	29. Other Services
13. Home Based Services	
14. Home Delivered Meals	
15. Housing Services	
16. Independent and Transitional Living Services	
17. Information and Referral Services	

Arizona Dictionary and Taxonomy of Human Services

- **Adaptive Aids and Devices**
A service that provides or fabricates specialized equipment that will assist persons in performing normal living skills, and any necessary installation, fitting, adjustment, and training.
- **Adaptive Aids and Devices – Repair/Modification**
A service that repairs or modifies aids and devices that assist persons in performing normal living skills.
- **Administrative Services**
Services that enable the effective administration and receipt of services.
- **Adoption**
A service that provides for the certification of a family, support services to the family after a child is placed and supervision of the family until the child's adoption is finalized.
- **Adoption Services**
Services that provide for the selection of a family, placement and supervision of a child until an adoption is finalized.
- **Adoption Subsidy**
A service that provides payments for special services and/or maintenance for children who might otherwise not be adopted.
- **Adult Day Care/Adult Day Health Care**
A service that provides supervised planned care and health-related services to adults in a group setting during a portion of a 24-hour day.
- **Adult Foster Care**
A service that provides residential care and supervision of one to four adults in a family setting.
- **Advocacy**
Services that take action to protect the rights of individuals and ensure they receive appropriate services and benefits or to seek needed changes in the law and/or administrative rules to protect the rights of individuals and ensure adequate service levels.
- **Alternative Communication Training**
A service that provides for a specific curriculum that creates an opportunity for competency in recognized and accepted non-verbal medium.
- **Alternative Residential Services**
An alternative setting to an individual's own home that is licensed or certified to provide one or more of the following: room and board, health care, health related services, behavioral health services, and/or habilitation for residents on a continuing basis. The setting is not a licensed nursing care institution.

Arizona Dictionary and Taxonomy of Human Services

- **Assessment/Evaluation**
Services that provide an evaluation to identify and analyze problems, needs and/or assets and may recommend corrective action and/or treatment.
- **Attendant Care/Personal Assistance**
A service that provides a qualified individual to supply needed services in order for an individual to remain in his/her home and/or participate in work/community activities.
- **Basic Education**
A service that provides instruction in educational areas necessary for an individual to function effectively.
- **Behavioral Therapeutic Activities**
A service that provides therapeutic activities to persons and/or their families in a home, school, preschool, after school, nursery/day care, or other residential or non-office setting. (The Department of Health Services presently calls this service In-Home and Community.)
- **Case Management**
A service or process that establishes a relationship with an individual or family in order to enhance their functioning and/or integration into the community. Appropriate services and/or benefits are identified, planned, obtained, provided, recorded, monitored, modified when necessary and/or terminated. This may include: assessment to determine their needs and eligibility when applying for/receiving services, assistance in finding necessary resources in addition to covered services to meet basic needs, assistance in obtaining entitlements, communication and coordination of care as well as follow-up of crisis contacts or missed appointments.
- **Child Care**
A service that provides supervised planned care for children during a portion of a 24-hour day.
- **Child Foster Care**
A service that provides family home care and supervision to child(ren) on a 24-hour day basis.
- **Child Support**
Services that locate absent parents, establish paternity, establish child support obligation, and collect and distribute child/spousal support.
- **Chore**
A service that provides for heavy indoor cleaning and may include designated outdoor tasks.

Arizona Dictionary and Taxonomy of Human Services

- **Client Access, Education and Information**
A service that provides education, information and assistance to individuals and groups regarding the availability of, and accessibility to, human services.
- **Community Education and Information**
A service that provides information on, and/or instructions in, various subjects through public contact and/or meetings, printed materials and media presentations focused on a particular subject, field of interest, agency or service(s).
- **Community Services**
Services that provide a range of activities that have a measurable and major impact on causes of poverty.
- **Companion Services**
A service that provides companions and supportive services to individuals with special needs.
- **Comprehensive Disability Related Services**
Services that provide two or more of the following services that assist individuals in achieving their vocational or independent living goals. The services include but are not limited to: adaptive aids and devices, assistive technology training, independent living skills, orientation and adjustment to disability training, orientation and mobility training, and work adjustment training.
- **Comprehensive Service Delivery**
Services that provide two or more of the following services that assist individuals in accessing or receiving services: protective services, counseling, home care, home management training, reassurance, home repair/adaptation/renovation, transportation, parent aide service and case management.
- **Comprehensive Youth Development**
A service that mobilizes volunteers who are adults to carry out programs that develop the personal fitness and character of youth.
- **Congregate Meals**
A service that provides for a nutritious meal containing at least 1/3 of the Recommended Dietary Allowance for an individual in a congregate setting.
- **Consultation**
A service that provides professional information and advice to assist in planning, developing, implementing and evaluating individual and service programs and in providing coordination with the professional community.
- **Community Coordination**
A service that promotes efficiency through the cooperation and collaboration of multiple entities concerned with the same issue or need.

Arizona Dictionary and Taxonomy of Human Services

- **Counseling/Intervention**
Services that provide for a wide range of personal, interpersonal, situational, and functional guidance.
- **Crisis Shelter Services**
Services that provide assistance to abused individuals or families. Services include, but are not limited to both the shelter and counseling.
- **Day Care**
Services that provide for, and support the provision of, supervised planned care during a portion of a 24-hour day.
- **Day Treatment and Training**
Services that provide training, supervision, therapeutic activities and as appropriate, counseling, to promote skill development in independent living, self care, communication, and social relationships.
- **Developmental Day Training**
A service that provides specialized sensorimotor, cognitive, communicative, social, interaction, and behavioral training for some portion of a 24-hour day.
- **Developmental Disability Day Care**
A service that provides supervised planned care, daily living skills training, and habilitation services in a group setting during a portion of a 24-hour day.
- **Domestic Violence**
Services provide assistance to an abused individual or families. Services available include: shelter, supportive, prevention strategies, training, victim's rights and victim's compensation, coordination, crisis counseling, case management, advocacy, planning, program development, program evaluation, supported employment, life skills training, law enforcement and prosecution.
- **Drug Abuse Counseling**
A service that provides an individual an opportunity to learn the effects of drug abuse and counsels the person on alternative life style habits.
- **Eligibility Determination**
A service that provides a decision that an individual or household is or is not qualified for services or benefits.
- **Emergency Human Services**
Services that respond to crises-related situations where there is an inability to provide for the basic needs. Services may include, but are not limited to: case management, financial and referral.

Arizona Dictionary and Taxonomy of Human Services

- **Emergency Shelter**
A service that provides immediate shelter to persons who are without shelter or a fixed place of residence. Emergency shelter may usually be provided for a period of up to 120 days.
- **Employment Related Services**
Services that provide outreach, intake, eligibility, placement and follow-up activities in support of obtaining employment. Services may include, but are not limited to: occupational/vocational education, assessment, basic education, work experience, counseling, case management, job development and placement, work adjustment training, supported employment, supported employment extended, work exploration, and pre-vocational training.
- **Employment Services**
Services that provide activities and assistance in support of finding, entering or retaining a job for individuals or groups.
- **Exemplary Youth Work Program**
Services that provide various employment-related training activities for youth. Services may include, but are not limited to: occupational/vocational education, assessment, basic education, work experience, counseling, case management, and job placement.
- **Family Planning**
A service that provides assistance to individuals to voluntarily implement plans to determine the number and spacing of children.
- **Food Administration**
A service that provides for the storage, handling, and distribution of food products.
- **General Transportation**
A service that provides or assists in obtaining various types of transportation for specific needs.
- **Group Home Care**
A licensed facility for the 24-hour care and supervision of individuals.
- **Habilitation Services**
Services that provide a variety of interventions designed to maximize the functioning of persons with developmental disabilities. Services may include, but are not limited to: facilitative therapies, special developmental skills, behavior intervention, and sensorimotor development.

Arizona Dictionary and Taxonomy of Human Services

- **Home Care**
Services that provide individuals who are at risk of institutionalization with coordinated in-home support needed to remain at home. Services may include, but are not limited to: attendant care/personal assistance, housekeeping/homemaker, chore, home health aid, personal care, respite, and nursing services
- **Home Delivered Meals**
A service that provides for a nutritious meal containing at least 1/3 of the Recommended Dietary Allowance for an individual, delivered to his/her place of residence.
- **Home Health Aid**
A service that provides intermittent health maintenance continued treatment or monitoring of a health condition and supportive care for activities of daily living at the individual's place of residence.
- **Home Management Skills Training**
A service that provides training in activities related to routine household maintenance.
- **Home Recruitment and Study**
A service that identifies families for either permanent placements or to provide child care services, conducts training to families and prepares the home study for licensure/certification.
- **Home Repair/Renovation**
A service that provides for safety and/or structural repairs to the home.
- **Hospice**
A service that provides health care and emotional support to terminally ill individuals and their families/caregivers during the final stages of life.
- **Housekeeping/Homemaker**
A service that provides assistance in the performance of routine household activities at an individual's place of residence.
- **Housing Search and Relocation**
A service that provides assistance toward locating suitable housing.
- **Housing Support Services**
Services that focus on providing the necessary supports to locate and maintain a home.
- **Independent Living**
A service that provides for individuals living independently and possessing the skills necessary to function at a minimum level of self-sufficiency.

Arizona Dictionary and Taxonomy of Human Services

- **Independent Living Skills**
A service that provides interpersonal and daily living skills training and counseling to prepare individuals for independent living.
- **Information and Referral**
A service that provides or arranges for assistance to individuals to enable them to gain access to services through the provision of accurate and current information and referral to appropriate resources. Referral may involve short-term supportive assistance and follow-up.
- **In-Home Family Support**
Services that provide coordinated support services that will assist the family to remain intact or an individual to remain in his/her home.
- **Intensive Family Preservation and Reunification Services**
Services that provide intensive crisis-oriented activities to families whose children are at significant risk of out-of-home placement due to abuse and/or neglect in order to allow those children to safely remain in their own home. Services may include, but are not limited to: counseling, communication and negotiation skills, parenting skills training, home management skills, job readiness training, case management, and development of linkages to community resources.
- **Interpreter**
A service that provides a person or equipment to facilitate communication.
- **Job Development and Placement**
A service that provides assistance in obtaining employment for job-ready individuals.
- **Job Training**
A service that develops specific vocational skills.
- **Legal Assistance**
A service that provides consultation and representation of civil and legal matters.
- **Legal Services**
Services that provide for consultation and information based on law.
- **Long-Term Care Advocacy**
A service that is to investigate and resolve complaints relating to administrative action that may adversely affect the health, safety, welfare and rights of individuals who are residents of long term care facilities.
- **Medical Alert System**
Services provide access to emergency assistance by means of an electronic alert system for vulnerable individuals who live alone or are left alone for an extended period.

Arizona Dictionary and Taxonomy of Human Services

- **Mental Health Education**
A service that provides instruction utilizing a positive life style as the medium of instruction.
- **Monitoring**
A service that checks and keeps track of contractor compliance with state, federal and contractual regulations, rules and conditions.
- **Nursing**
A service that provides nursing intervention that may include patient care, coordination facilitation and education.
- **Nutrition Education**
A service that provides individual or group instruction about food to maintain or improve development.
- **Occupational Therapy**
A service that directs the individual's participation in selected activities to restore, maintain or improve functional skills.
- **Occupational/Vocational Education**
A service that provides instruction and/or skills training in technical, business and other trade areas. Training may be provided in a classroom or actual job setting.
- **Orientation and Mobility Training**
A service that provides skills training that assists a person in safely navigating an identified environment.
- **Outreach**
A service that provides a systematic method to identify and directly contact persons in need of services.
- **Parent Aide Service**
A service that provides a range of support services instruction and assistance to parents or caregivers to improve their skills and ability to fulfill parenting roles and responsibilities.
- **Parenting Skills Training**
A service that provides training that promotes specific parent or caregiver skills.
- **Peer Counseling**
A service that provides self-help opportunities.
- **Personal Escort**
A service that provides an escort who transports and assists an individual to perform necessary errands away from the residence.

Arizona Dictionary and Taxonomy of Human Services

- **Personal Living Skills Training**

A service that provides training that promotes specific self-care skills.

- **Physical Therapy**

A service that provides treatment to restore, maintain or improve a physical function.

- **Planning**

A service that identifies and analyzes priority needs, explores options, establishes goals, and develops a course of action that will bring about a desired condition or event at some specific time in the future.

- **Prevention**

Services that provide for planned efforts to prevent specific conditions, illnesses, injuries or environmental hazards that could place an individual, group or community at risk for a negative social, physical, behavioral or health outcome.

- **Prevocational Training**

A service that provides sensorimotor, cognitive, communicative, social interaction and behavioral training necessary for vocational activities.

- **Professional Family Foster Care**

Services that provide in a family-based home, care and supervision of a child on a 24-hour basis and include specialized care and support services, which are the responsibility of the licensee who serves as the foster parent.

- **Professional Specialty**

A service that allows for the provision of services not otherwise identified separately in this Arizona Dictionary and Taxonomy of Human Services that requires special expertise, knowledge or credentials in a given area.

- **Program Administration**

A service that distributes and administers funds received for programs.

- **Program Development**

A service that researches and/or establishes a new service(s); improves, expands, or integrates an existing service(s).

- **Program Evaluation**

A service that assesses systematically the impact and/or efficiency of programs.

- **Protective Services**

Services that provide support to individuals who are in abusive, self-neglect, or vulnerable situations. Services may include, but are not restricted to: financial, shelter, legal, counseling, information and referral and follow-up.

Arizona Dictionary and Taxonomy of Human Services

- **Reassurance**
A service that provides a regular contact system for individuals restricted to their place of residence.
- **Rehabilitation Instructional Services**
Services that provide training in community living skills and activities directed toward personal and social adjustment.
- **Relinquishment and Severance**
A service that assists biological and/or legal parents in the decision and/or process of relinquishment or termination of their rights as parents.
- **Research**
A service that entails gathering information on specific topics.
- **Residential Living and Development**
Services that provide for varying degrees of residential care, supervision, counseling, and training in activities of daily living.
- **Respiratory Therapy**
A service that provides treatment to restore, maintain, or improve breathing.
- **Respite**
Services that provide different types of respite.
- **Respite Care**
A service that provides short-term care and supervision consistent with the health needs of the person to supplement care to provide a safe living environment and/or to support or relieve caregivers for the benefit of the person.
- **Self-Help Group**
A service that provides peer intervention in a group setting.
- **Shelter**
Services that provide for care, refuge, and protection.
- **Sheltered Employment**
A service that provides a controlled and protected work environment, additional supervision, and other supports for individuals engaged in remunerative work either in a sheltered workshop or in the community.
- **Social Adjustment**
A service that instructs multiple domains of a person's life for improved functioning.
- **Social Development**
Services that provide structure and instruction, designed to promote improved social functioning.

Arizona Dictionary and Taxonomy of Human Services

- **Socialization and Recreation**
A service that promotes mentally and emotionally healthy interaction between participants and that may be organized around leisure activities.
- **Speech Therapy**
A service that provides evaluations, program recommendations, and/or treatment/training in receptive and expressive language, voice, articulation, and fluency.
- **Staff Development and Training**
A service that provides an organized method of improving needed staff skills.
- **Substance Abuse Assessment**
A service that provides for the assessment of an individual to determine substance abuse and dependence and recommend interventions and treatment.
- **Substance Abuse Screening**
A service that provides for the screening of an individual to determine the presence of alcohol or drug abuse.
- **Supervised Employment**
Services that provide for training in an area of employment under guidance of a trained supervisor.
- **Supported Employment**
A service that provides job development, assistance in matching the individual with an integrated competitive job, and intensive time-limited supports to an employed individual once placed.
- **Supported Employment, Extended**
A service that provides long-term, on-going support services for an employed individual.
- **Supportive Intervention/Guidance Counseling**
A service that provides supportive intervention and/or guidance.
- **Transitional Housing**
A service that provides long-term shelter for a period of up to two years to homeless persons, who are sufficiently stabilized to pursue some level of self-sufficiency, but may require additional supportive services. The goal of this service is to facilitate movement to permanent housing.
- **Transitional Shelter**
A service that provides short-term care.
- **Transportation**
Services that promote or provide mobility.

Arizona Dictionary and Taxonomy of Human Services

- **Unaccompanied Minors Service**
A service that provides foster care provisions for refugee minors who are in the United States without a qualified parent or legal guardian.
- **Utility Assistance**
A service that provides financial and/or non-financial aid to meet residential public service needs.
- **Volunteer Services**
A service that provides coordination of volunteer activities.
- **Work Adjustment Training**
A service that provides training in the meaning, value and demands of work and in the development of positive attitudes toward work.
- **Work Experience**
A service that provides work situations and support services to foster and promote the transition to employment.

**Crosswalk for Federal SSBG Services to the
Arizona Dictionary and Taxonomy of Human Services**

SSBG Services for Federal Reporting Requirements	Arizona Taxonomy Services Approved for SSBG Funding
1. Adoption Services	<ul style="list-style-type: none"> • Adoption • Adoption Services • Adoption Subsidy • Relinquishment and Severance
2. Case Management Services	<ul style="list-style-type: none"> • Case Management • Community Coordination • Eligibility Determination • Emergency Human Services
3. Congregate Meals	<ul style="list-style-type: none"> • Congregate Meals
4. Counseling Services	<ul style="list-style-type: none"> • Assessment/Evaluation • Counseling/Intervention • Professional Specialty • Supportive Intervention/Guidance Counseling
5. Day Care Services-Adults	<ul style="list-style-type: none"> • Adult Day Care/Adult Day Health Care • Companion Services • Day Treatment and Training • Developmental Day Training • Monitoring
6. Day Care Services-Children	<ul style="list-style-type: none"> • Child Care • Day Treatment and Training • Developmental Day Training • Home Recruitment and Study • Monitoring
7. Education and Training Services	<ul style="list-style-type: none"> • Alternative Communication Training • Basic Education • Interpreter
8. Employment Services	<ul style="list-style-type: none"> • Adaptive Aids and Devices • Adaptive Aids and Devices – Repair/Modification • Assessment/Evaluation • Employment Related Services • Exemplary Youth Work Program

**Crosswalk for Federal SSBG Services to the
Arizona Dictionary and Taxonomy of Human Services**

8. Employment Services (Continued)	<ul style="list-style-type: none"> • Job Development and Placement • Job Training • Mature Worker Program • Prevocational Training • Sheltered Employment • Supported Employment • Supported Employment, Extended • Work Adjustment Training • Work Experience
9. Family Planning Services	<ul style="list-style-type: none"> • Family Planning
10. Foster Care Services for Adults	<ul style="list-style-type: none"> • Adult Foster Care • Home Recruitment and Study
11. Foster Care Services for Children	<ul style="list-style-type: none"> • Child Foster Care • Home Recruitment and Study • Monitoring • Professional Family Foster Care
12. Health Related and Home Health Services	<ul style="list-style-type: none"> • Disease Prevention and Health Promotion • Home Health Aid • Hospice • Medical Alert System
13. Home Based Services	<ul style="list-style-type: none"> • Administrative Services • Attendant Care/Personal Assistance • Community Services • Home Care • Housekeeping/Homemaker • Orientation and Mobility Training • Parent Aid Service • Personal Care • Personal Living Skills Training • Program Development • Reassurance • Rehabilitation Instructional Services • Respite
14. Home Delivered Meals	<ul style="list-style-type: none"> • Home Delivered Meals

**Crosswalk for Federal SSBG Services to the
Arizona Dictionary and Taxonomy of Human Services**

15. Housing Services	<ul style="list-style-type: none"> • Emergency Shelter • Home Repair/Renovation • Housing Search and Relocation • Housing Support Services • Planning • Shelter • Transitional Housing
16. Independent and Transitional Living Services	<ul style="list-style-type: none"> • Independent Living Skills • Unaccompanied Minors Service
17. Information and Referral Services	<ul style="list-style-type: none"> • Client Access, Education and Information • Community Education and Information • Community Coordination • Information and Referral • Outreach • Volunteer Services
18. Legal Services	<ul style="list-style-type: none"> • Legal Assistance • Legal Services
19. Pregnancy and Parenting Services For Young Parents	<ul style="list-style-type: none"> • Community Education and Information • Parenting Skills Training
20. Prevention and Intervention Services	<ul style="list-style-type: none"> • Advocacy • Behavioral Therapeutic Activities • Comprehensive Service Delivery • Comprehensive Youth Development • Counseling/Intervention • Crisis Shelter Services • Domestic Violence • Housing Support Services • In-Home Family Support • Intensive Family Preservation and Reunification Services • Long-Term Care Advocacy • Parent Aide Service • Peer Counseling • Supportive Intervention/Guidance • Counseling • Transitional Shelter

**Crosswalk for Federal SSBG Services to the
Arizona Dictionary and Taxonomy of Human Services**

21. Protective Services for Adults	<ul style="list-style-type: none"> • Emergency Human Services • Protective Services
22. Protective Services for Children	<ul style="list-style-type: none"> • Emergency Human Services • Protective Services
23. Recreational Services	<ul style="list-style-type: none"> • Comprehensive Youth Development • Social Adjustment • Socialization and Recreation
24. Residential Treatment Services	<ul style="list-style-type: none"> • (Not a ADES service)
25. Special Services for Persons With Developmental or Physical Disabilities, or Persons with Visual or Auditory Impairments	<ul style="list-style-type: none"> • Adaptive Aids and Devices • Adaptive Aids and Devices –Repair/Modification • Alternative Communication Training • Attendant Care/Personal Assistance • Day Treatment and Training • Developmental Day Training • Developmental Disability Day Care • Comprehensive Disability Related Services • Employment Services • Employment Related Services • Habilitation Services • Home Management Skills Training • Housekeeping/Homemaker • Independent Living • Interpreter • Job Training • Occupational Therapy • Personal Living Skills Training • Physical Therapy • Rehabilitation Instructional Services • Respite • Sheltered Employment • Socialization and Recreation • Speech Therapy • Supported Employment • Supported Employment, Extended • Transportation

**Crosswalk for Federal SSBG Services to the
Arizona Dictionary and Taxonomy of Human Services**

26. Special Services For Youth Involved in or at Risk of Involvement with Criminal Activity	<ul style="list-style-type: none"> • Prevention
27. Substance Abuse Services	<ul style="list-style-type: none"> • Assessment/Evaluation • Case Management
28. Transportation Services	<ul style="list-style-type: none"> • Personal Escort • Transportation
29. Other Services	<ul style="list-style-type: none"> • Community Coordination • Consultation

SSBG funds may not be used for direct monetary payments to SSBG clients, professional medical care, the public school system, the purchase of land or the construction of buildings. However, there are exceptions that allow the use of SSBG funds for some of these items under certain circumstances.

Service Availability

The Services, Target Group Eligibility, and Status Eligibility sections are identified below and provide the primary basis for determining eligibility for service. In addition to these areas, service availability will be determined on the basis of programmatic need for service. More specific service availability criteria may be specified in the purchase-of-service contracts with provider agencies. An individual who is determined to be eligible under the above criteria shall not be denied access to services because of any other condition, although providers may use waiting lists and/or set priorities for services based on level of need for the service.

A. Services

This column lists the services available in the geographic area. Eligibility for service may vary from one geographic area to another, and services may only be available in certain areas of the state. Some services may be identified as being available on a statewide basis.

B. Target Group Eligibility

This column identifies the types of individuals eligible for service. The most common target groups identified are adults, children, elderly, persons with disabilities, developmentally disabled, and adults/families/children. The definitions of these target groups are identified on pages 27 and 28. Combinations of target groups may be identified (e.g., elderly persons with disabilities would be designated as "ELD/PWD"). Also, there may be characteristics added to the target groups (e.g., ELD/PWD/Blind) that further clarify availability of service.

C. Status Eligibility

This column identifies the financial category for which individuals must qualify in order to be eligible for service. Except as noted below, Arizona does not require a means test for SSBG-funded services. Children and their families who receive services that are funded with TANF funds transferred to the SSBG must have incomes less than 200 percent of the Federal Poverty Level (FPL). Families receiving child care assistance must meet income requirements specified.

1. **Income Eligibility TANF/SSBG Funds** - Services funded by TANF funds transferred to SSBG are delivered in accordance with the requirements of 42 U.S.C. Part A, Title IV, Sec. 404, (d) (3) (B), which reads:

EXCEPTION RELATING TO TITLE XX PROGRAMS. All amounts paid to a State under this part that are used to carry out State programs pursuant to Title XX shall be used only for programs and services to children or their families whose income is less than 200 percent of the income official poverty line (as defined by the Office of Management and Budget, and revised annually in accordance with section 673(2) of the Omnibus Budget Reconciliation Act of 1981) applicable to a family of the size involved.

2. **Income Eligibility Child Care** - The Child Care Administration provides child care assistance to support working families with incomes at or below 165 percent of the FPL at the time of application determination. Once determined eligible, the families can remain eligible until the next redetermination takes place as long as all other eligibility criteria are met, unless the income exceeds 85 percent of State Median Income. Families referred by ADCS, children receiving ADCS foster care, and families who are receiving TANF cash assistance and are participating in the Workforce Development Administration-Jobs program and/or who are employed receive services without regard to income and are not subject to a waiting list. Families transitioning off of the TANF cash assistance program must have incomes at or below 165 percent of the FPL; however, these families are not subject to a waiting list. Another group of families who are not subject to a waiting list are those who are residing in a homeless/domestic violence shelter. When a waiting list is in place, working families, whose incomes are at or below 100 percent of the FPL, are given priority for any subsequent releases of families into service.
3. **Group** - All individuals within a specific target group are financially eligible.
4. **Homeless** - Individuals who have been evicted from a residence, who are residing in an emergency shelter, or who are without a regular nighttime residence and who are without family or friends that are able or willing to share their residence.

D. Local and State-Planned Levels

These columns represent estimates of the federal dollars that may be utilized for the delivery of the services.

E. Target Group Definitions

1. **Adults (AD)** - Any individual 18 years of age or older.
2. **Children (CH)** - Any individual under the age of 18.
3. **Developmentally Disabled Individuals (DD)** - Any individual having a severe, chronic disability attributable to a cognitive disability, cerebral palsy, epilepsy, or autism, and which manifested itself before age 18, is likely to continue indefinitely and results in substantial functional limitations in three or more areas of the major life activities; and reflects the need for a combination and sequence of special, interdisciplinary or generic care, treatment, or other services, which are of lifelong or extended duration and are individually planned or coordinated.
 - "Major life activities" for the purpose of this definition are: (1) self-care; (2) receptive and expressive language; (3) learning; (4) mobility; (5) self-direction; (6) capacity for independent living; and (7) economic self-sufficiency.
4. **Elderly (ELD)** - Any individual 60 years of age or older.

5. **Persons with Disabilities** (PWD) - Any individual who has a physical or mental impairment that substantially limits one or more major life activities and has a diagnosis of such impairment.
- "Physical or Mental Impairment" includes physiological conditions, cosmetic disfigurements, anatomical losses or mental disorders.
 - "Diagnosis" means diagnosed or classified as having a physical or mental impairment by a doctor of medicine, a doctor of osteopathy or a psychologist certified by either the Arizona State Board of Psychologist Examiners or the Department of Education.
 - "Major life activities" for the purpose of this definition are: (1) self-care; (2) receptive and expressive language; (3) learning; (4) mobility; (5) self-direction; (6) capacity for independent living; and (7) economic self-sufficiency.
6. **Adults/Families/Children** (AFC) - Any individual or family.

**DEPARTMENT OF CHILD SAFETY (ADCS)
SFY 2020**

DISTRICT I (MARICOPA COUNTY)					
SERVICES	TARGET GROUP	STATUS ELIG.	LOCAL PLANNED	STATE PLANNED	LOCAL & STATE TOTAL
Case Management	CH (Pregnant/ Parenting Youth)	Group	\$ 37,625	\$ -	\$ 37,625
Supportive Intervention/Guidance Counseling	CH	Group	\$ 42,577	\$ -	\$ 42,577
Crisis Shelter Services	CH	Group	\$ 97,647		\$ 97,647
DISTRICT I TOTALS			\$ 177,849	\$ -	\$ 177,849

DISTRICT II (PIMA COUNTY)					
SERVICES	TARGET GROUP	STATUS ELIG.	LOCAL PLANNED	STATE PLANNED	LOCAL & STATE TOTAL
Supportive Intervention/Guidance Counseling	AD/CH (DV Offenders)	Group	\$ 33,536	\$ -	\$ 33,536
Supportive Intervention/Guidance Counseling	AFC	Group	\$ 176,809	\$ -	\$ 176,809
Behavioral Therapeutic Activities	CH	Group	\$ 66,878	\$ -	\$ 66,878
DISTRICT II TOTALS			\$ 277,223	\$ -	\$ 277,223

DEPARTMENT OF CHILD SAFETY (ADCS)
SFY 2020

DISTRICT III (APACHE, COCONINO, NAVAJO, YAVAPAI COUNTIES)					
SERVICES	TARGET GROUP	STATUS ELIG.	LOCAL PLANNED	STATE PLANNED	LOCAL & STATE TOTAL
COCONINO COUNTY	AFC	Group	\$ 28,920	\$ -	\$ 28,920
Supportive Intervention/Guidance Counseling					
COCONINO TOTALS			\$ 28,920	\$ -	\$ 28,920
YAVAPAI COUNTY	CH	Group	\$ 11,644	\$ -	\$ 11,644
Community Education & Information					
Supportive Intervention/Guidance Counseling	AFC	Group	\$ 11,644	\$ -	\$ 11,644
YAVAPAI TOTALS			\$ 23,288	\$ -	\$ 23,288
DISTRICT III TOTALS			\$ 52,208	\$ -	\$ 52,208

**DEPARTMENT OF CHILD SAFETY (ADCS)
SFY 2020**

DISTRICT V (GILA, PINAL COUNTIES)					
SERVICES	TARGET GROUP	STATUS ELIG.	LOCAL PLANNED	STATE PLANNED	LOCAL & STATE TOTAL
GILA COUNTY	AFC	Group	\$ 4,664	\$ -	\$ 4,664
Prevention					
Supportive Intervention/Guidance Counseling					
GILA TOTALS			\$ 12,956	\$ -	\$ 12,956
PINAL COUNTY	AFC	Group	\$ 11,402	\$ -	\$ 11,402
Prevention					
Supportive Intervention/Guidance Counseling					
PINAL TOTALS			\$ 38,872	\$ -	\$ 38,872
DISTRICT V TOTALS			\$ 51,828	\$ -	\$ 51,828

DISTRICT VI (COCHISE, GREENLEE, GRAHAM, SANTA CRUZ COUNTIES)					
SERVICES	TARGET GROUP	STATUS ELIG.	LOCAL PLANNED	STATE PLANNED	LOCAL & STATE TOTAL
GREENLEE COUNTY	AFC	Group	\$ 5,000	\$ -	\$ 5,000
Prevention					
Supportive Intervention/Guidance Counseling					
GREENLEE TOTALS			\$ 7,874	\$ -	\$ 7,874
GRAHAM COUNTY	AFC	Group	\$ 25,758	\$ -	\$ 25,758
Prevention					
Supportive Intervention/Guidance Counseling					
GRAHAM TOTALS			\$ 25,758	\$ -	\$ 25,758
DISTRICT WIDE	AFC	Group	\$ 4,818	\$ -	\$ 4,818
Supportive Intervention/Guidance Counseling					
DISTRICT WIDE TOTALS			\$ 4,818	\$ -	\$ 4,818
DISTRICT VI TOTALS			\$ 38,450	\$ -	\$ 38,450

DEPARTMENT OF CHILD SAFETY (ADCS)
SFY 2020

TRIBAL AND STATEWIDE					
SERVICES	TARGET GROUP	STATUS ELIG.	LOCAL PLANNED	STATE PLANNED	LOCAL & STATE TOTAL
TRIBAL	CH	Group			
ACYF/ITCA Tribal Consultation			\$ -	\$ 29,993	\$ 29,993
Navajo Home Based Services (Tribal Allocation Chart on Page 4 of this Plan)			\$ 1,174,045	\$ -	\$ 1,174,045
Gila Home Based Services (Tribal Allocation Chart on Page 4 of this Plan)	CH	Group	\$ 17,397	\$ -	\$ 17,397
TRIBAL TOTALS			\$ 1,191,442	\$ 29,993	\$ 1,221,435
STATEWIDE SERVICES	AFC	Group			
Counseling/Intervention				\$ 292,531	\$ 292,531
Legal Services				\$ 1,423,764	\$ 1,423,764
Foster Care Services for Children			\$ -	\$ 5,849,500	\$ 5,849,500
TANF Transferred to SSBG (Child Safety and Support Services)			\$ -	\$ 19,940,731	\$ 19,940,731
Case Management			\$ -	\$ 5,463,243	\$ 5,463,243
STATEWIDE SERVICE TOTALS			\$ -	\$ 32,969,769	\$ 32,969,769
TRIBAL AND STATEWIDE SERVICES			\$ 1,191,442	\$ 32,999,762	\$ 34,191,204
NOTE: TANF Funds Transferred to SSBG Federal Restrictions: TANF/SSBG funds are restricted for use per 42 U.S.C. Part A, Title IV, Sec. 404, (d) (3) (B), which reads: "EXCEPTION RELATING TO TITLE XX PROGRAMS. All amounts paid to a State under this part that are used to carry out State programs pursuant to Title XX shall be used only to carry out programs and services to children and their families whose income is less than 200 percent of the income official poverty line (as defined by the Office of Management and Budget, revised annually... Act of 1981) applicable to a family of the size involved."					
ALL ADCS SERVICES					
			LOCAL PLANNED	STATE PLANNED	LOCAL & STATE TOTAL
ADCS TOTALS			\$ 1,789,000	\$ 32,999,762	\$ 34,788,762

**CHILD CARE ADMINISTRATION (CCA)
SFY 2020**

TRIBAL AND STATEWIDE					
SERVICES	TARGET GROUP	STATUS ELIG.	LOCAL PLANNED	STATE PLANNED	LOCAL & STATE
Tohono O'odham Nation Day Care Services (Tribal Allocation Chart on Page 4 of this Plan)	CH	Group	\$ 103,012	\$ -	\$ 103,012
Day Care Services - Children	CH	Group	\$ -	\$ 154,915	\$ 154,915
TRIBAL AND STATEWIDE TOTALS			\$ 103,012	\$ 154,915	\$ 257,927
ALL CCA SERVICES					
			LOCAL PLANNED	STATE PLANNED	LOCAL & STATE
CCA TOTALS			\$ 103,012	\$ 154,915	\$ 257,927

DIVISION OF AGING AND ADULT SERVICES (DAAS)
SFY 2020

DISTRICT I (MARICOPA COUNTY)					
SERVICES	TARGET GROUP	STATUS ELIG.	LOCAL PLANNED	STATE PLANNED	LOCAL & STATE TOTAL
Adult Day Care/Adult Day Health Care	ELD	Group	\$ 202,197	\$ 20,196	\$ 222,393
Adult Day Care/Adult Day Health Care	PWD	Group	\$ 5,031	\$ -	\$ 5,031
Emergency Human Services	ELD or PWD	Group	\$ -	\$ 45,425	\$ 45,425
Community Education & Information	ELD or PWD	Group	\$ -	\$ 70,113	\$ 70,113
Congregate Meals	ELD or PWD	Group	\$ -	\$ 2,875	\$ 2,875
Home Delivered Meals	ELD	Group	\$ 522,407	\$ -	\$ 522,407
Transportation	ELD or PWD	Group	\$ -	\$ 5,115	\$ 5,115
Home Care	ELD or PWD	Group	\$ 397,720	\$ 1,266,790	\$ 1,664,510
Home Care	PWD	Group	\$ 8,236	\$ -	\$ 8,236
Administrative Services	ELD or PWD	Group	\$ -	\$ 339,340	\$ 339,340
Respite	ELD or PWD	Group	\$ -	\$ 146,737	\$ 146,737
Case Management	ELD or PWD	Group	\$ -	\$ 430,221	\$ 430,221
Volunteer Services	ELD or PWD	Group	\$ -	\$ 14,321	\$ 14,321
Legal Assistance	ELD or PWD	Group	\$ -	\$ 13,818	\$ 13,818
Emergency Shelter	AFC (Victims of Domestic Violence)	Group	\$ 437,091	\$ -	\$ 437,091
Supportive Intervention/Guidance Counseling	AFC (Domestic Violence)	Group	\$ 35,213	\$ -	\$ 35,213
Emergency Shelter	AFC (Homeless Families & Individuals)	Group	\$ 347,418		\$ 347,418
Housing Support Services	ELD/DD (Homeless)	Group	\$ 98,665	\$ -	\$ 98,665

DIVISION OF AGING AND ADULT SERVICES (DAAS)
SFY 2020

Housing Support Services	AFC	Group	\$ 81,323	\$ -	\$ 81,323
Case Management (Basic Needs)	AFC	Group	\$ 1,214,348	\$ -	\$ 1,214,348
Housing Support Services	AFC (Homeless)	Group	\$ -	\$ 252,407	\$ 252,407
DISTRICT I TOTALS			\$ 3,349,649	\$ 2,607,358	\$ 5,957,007

DIVISION OF AGING AND ADULT SERVICES (DAAS)
SFY 2020

DISTRICT II (PIMA COUNTY)					
SERVICES	TARGET GROUP	STATUS ELIG.	LOCAL PLANNED	STATE PLANNED	LOCAL & STATE TOTAL
Home Care (Personal Care, Housekeeping & Home Health)	ELD or PWD	Group	\$ 339,850	\$ 763,049	\$ 1,102,899
Medical Alert System	ELD or PWD	Group	\$ -	\$ 9,061	\$ 9,061
Adult Day Care/Adult Day Health Care	ELD or PWD	Group	\$ -	\$ 2,400	\$ 2,400
Case Management	ELD or PWD	Group	\$ 337,304	\$ -	\$ 337,304
Case Management - Intake	ELD or PWD	Group	\$ -	\$ 99,461	\$ 99,461
Home Repair/Renovation	ELD or PWD	Group	\$ -	\$ 20,797	\$ 20,797
Home Delivered Meals	ELD or PWD	Group	\$ 78,239	\$ -	\$ 78,239
Administrative Services	ELD or PWD	Group	\$ -	\$ 180,947	\$ 180,947
Supportive Intervention/Guidance Counseling	AD/CH (Domestic Violence Victims)	Group	\$ 24,003	\$ -	\$ 24,003
Crisis Intervention Shelter Services	AD (Domestic Violence Victims)	Group	\$ 61,622	\$ -	\$ 61,622
Domestic Violence	AD (Domestic Violence Victims)	Group	\$ -	\$ 8,207	\$ 8,207
Case Management	AD (Domestic Violence Victims)	Group	\$ 36,549	\$ -	\$ 36,549
Legal Assistance (Civil: Legal assistance for individuals and families facing eviction or needing landlord tenant mitigation)	AFC (Low Income Residents)	Group	\$ 18,625	\$ -	\$ 18,625
Legal Assistance (Civil: Legal assistance for individuals and families in need of SNAP assistance)	AFC (Low Income Residents)	Group	\$ 18,625	\$ -	\$ 18,625
Legal Assistance (Civil: Various for domestic violence victims)	AFC (Domestic Violence Victims)	Group	\$ 27,685	\$ -	\$ 27,685

DIVISION OF AGING AND ADULT SERVICES (DAAS)
SFY 2020

Emergency Shelter	AD/CH (Adults and Youth - Homeless)	Group	\$ 51,492	\$ -	\$ 51,492
Housing Support Services	AD/CH (Adults and Children	Group	\$ 41,819	\$ -	\$ 41,819
DISTRICT II TOTALS			\$ 1,035,813	\$ 1,083,922	\$ 2,119,735

DIVISION OF AGING AND ADULT SERVICES (DAAS)
SFY 2020

DISTRICT III (APACHE, COCONINO, NAVAJO, YAVAPAI COUNTIES)					
SERVICES	TARGET GROUP	STATUS ELIG.	LOCAL PLANNED	STATE PLANNED	LOCAL & STATE TOTAL
APACHE COUNTY					
Case Management	ELD or PWD	Group	\$ -	\$ 4,393	\$ 4,393
Administrative Services	ELD or PWD	Group	\$ -	\$ 2,910	\$ 2,910
Home Delivered Meals	ELD or PWD or AD	Group	\$ 24,334	\$ -	\$ 24,334
Transportation	ELD or PWD or AD	Group	\$ 16,794	\$ -	\$ 16,794
Community Education & Information	ELD or PWD	Group	\$ -	\$ 1,977	\$ 1,977
Program Development	ELD or PWD	Group	\$ -	\$ 1,319	\$ 1,319
Legal Assistance	ELD or PWD	Group	\$ -	\$ 1,448	\$ 1,448
Long-Term Care Advocacy	ELD or PWD	Group	\$ -	\$ 1,357	\$ 1,357
Information & Referral	ELD or PWD	Group	\$ -	\$ 917	\$ 917
Home Care	ELD or PWD	Group	\$ -	\$ 5,524	\$ 5,524
APACHE TOTALS			\$ 41,128	\$ 19,845	\$ 60,973
COCONINO COUNTY					
Home Delivered Meals	ELD or PWD	Group	\$ 14,455	\$ -	\$ 14,455
Respite	ELD or PWD	Group	\$ 9,636	\$ -	\$ 9,636
Administrative Services	ELD or PWD	Group	\$ -	\$ 10,024	\$ 10,024
Case Management	ELD or PWD	Group	\$ 3,854	\$ 25,846	\$ 29,700
Home Care	ELD or PWD	Group	\$ 1,927	\$ 17,850	\$ 19,777
Transportation	ELD or PWD	Group	\$ 12,710	\$ 1,973	\$ 14,683
Emergency Shelter	AFC - Crisis Intervention, Domestic Violence	Group	\$ 6,745	\$ -	\$ 6,745
Supportive Intervention/Guidance Counseling	AFC Domestic Violence	Group	\$ 6,745	\$ -	\$ 6,745
Case Management	AFC - Crisis Intervention	Group	\$ 6,745	\$ -	\$ 6,745

DIVISION OF AGING AND ADULT SERVICES (DAAS)
SFY 2020

Community Ed. & Information	ELD or PWD	Group	\$ -	\$ 6,917	\$ 6,917
Program Development	ELD or PWD	Group	\$ -	\$ 4,616	\$ 4,616
Legal Assistance	ELD or PWD	Group	\$ -	\$ 5,067	\$ 5,067
Long-Term Care Advocacy	ELD or PWD	Group	\$ -	\$ 4,750	\$ 4,750
Information & Referral	ELD or PWD	Group	\$ -	\$ 6,485	\$ 6,485
COCONINO TOTALS			\$ 62,817	\$ 83,528	\$ 146,345

DIVISION OF AGING AND ADULT SERVICES (DAAS)
SFY 2020

NAVAJO COUNTY					
Administrative Services	ELD or PWD	Group	\$ -	\$ 10,060	\$ 10,060
Transportation	ELD or PWD or AD	Group	\$ 10,002	\$ -	\$ 10,002
Case Management	ELD or PWD	Group	\$ 4,007	\$ 14,842	\$ 18,849
Home Delivered Meals	ELD or PWD	Group	\$ 10,008	\$ -	\$ 10,008
Emergency Shelter	AFC - Crisis Intervention, Domestic Violence	Group	\$ 9,015	\$ -	\$ 9,015
Case Management	AFC	Group	\$ 15,460	\$ -	\$ 15,460
Transportation	AFC	Group	\$ 8,119	\$ -	\$ 8,119
Community Ed. & Information	ELD or PWD	Group	\$ -	\$ 5,003	\$ 5,003
Program Development	ELD or PWD	Group	\$ -	\$ 4,396	\$ 4,396
Legal Assistance	ELD or PWD	Group	\$ -	\$ 5,067	\$ 5,067
Long-Term Care Advocacy	ELD or PWD	Group	\$ -	\$ 4,749	\$ 4,749
Information & Referral	ELD or PWD	Group	\$ -	\$ 3,209	\$ 3,209
Home Care	ELD or PWD	Group	\$ -	\$ 17,782	\$ 17,782
NAVAJO TOTALS			\$ 56,611	\$ 65,108	\$ 121,719
YAVAPAI COUNTY					
Administrative Services	ELD or PWD	Group	\$ -	\$ 46,873	\$ 46,873
Case Management	ELD or PWD	Group	\$ 5,821	\$ 116,751	\$ 122,572
Home Delivered Meals	ELD or PWD or AD	Group	\$ 8,150		\$ 8,150
Adult Day Care/Adult Day Health Care	ELD or PWD	Group	\$ 9,316		\$ 9,316
Case Management Assistance for Eviction Prevention	AFC - Crisis Intervention	Group	\$ 5,821	\$ -	\$ 5,821
Emergency Shelter	AFC - Crisis Intervention	Group	\$ 11,644	\$ -	\$ 11,644
Case Management	AFC - Crisis Intervention	Group	\$ 11,644	\$ -	\$ 11,644
Transportation	AFC	Group	\$ 32,681	\$ -	\$ 32,681

DIVISION OF AGING AND ADULT SERVICES (DAAS)
SFY 2020

Transportation	ELD or PWD	Group	\$ -	\$ 5,190	\$ 5,190
Community Ed. & Information	ELD or PWD	Group	\$ -	\$ 17,091	\$ 17,091
Program Development	ELD or PWD	Group	\$ -	\$ 21,183	\$ 21,183
Legal Assistance	ELD or PWD	Group	\$ -	\$ 24,611	\$ 24,611
Long-Term Care Advocacy	ELD or PWD	Group	\$ -	\$ 23,071	\$ 23,071
Information & Referral	ELD or PWD	Group	\$ -	\$ 32,701	\$ 32,701
Home Care	ELD or PWD	Group	\$ -	\$ 127,987	\$ 127,987
YAVAPAI TOTALS			\$ 85,077	\$ 415,458	\$ 500,535
DISTRICT III TOTALS			\$ 245,633	\$ 583,939	\$ 829,572

DIVISION OF AGING AND ADULT SERVICES (DAAS)
SFY 2020

DISTRICT IV (LA PAZ, MOHAVE, YUMA COUNTIES)					
SERVICES	TARGET GROUP	STATUS ELIG.	LOCAL PLANNED	STATE PLANNED	LOCAL & STATE TOTAL
LA PAZ COUNTY					
Home Care	ELD or PWD	Group	\$ 3,193	\$ 36,519	\$ 39,712
Administrative Services	ELD or PWD	Group	\$ -	\$ 12,653	\$ 12,653
Case Management	ELD or PWD	Group	\$ 5,321	\$ 49,818	\$ 55,139
Home Delivered Meals	ELD or PWD	Group	\$ 13,125	\$ 5,000	\$ 18,125
Transportation	ELD or PWD	Group	\$ 13,834	\$ 255	\$ 14,089
LA PAZ TOTALS			\$ 35,473	\$ 104,245	\$ 139,718
MOHAVE COUNTY					
Home Care	ELD or PWD	Group	\$ 45,448	\$ 47,465	\$ 92,913
Case Management	ELD or PWD	Group	\$ 45,448	\$ 100,319	\$ 145,767
Administrative Services	ELD or PWD	Group	\$ -	\$ 24,416	\$ 24,416
Home Delivered Meals	ELD/AD/PWD	Group	\$ 45,448	\$ 15,000	\$ 60,448
Emergency Shelter	Domestic Violence	Group	\$ 45,449	\$ -	\$ 45,449
Transportation	ELD or PWD	Group		\$ 645	\$ 645
MOHAVE TOTALS			\$ 181,793	\$ 187,845	\$ 369,638
YUMA COUNTY					
Home Care	ELD or PWD	Group	\$ 31,658	\$ 22,879	\$ 54,537
Case Management	ELD or PWD	Group	\$ 20,351	\$ 94,485	\$ 114,836
Administrative Services	ELD or PWD	Group	\$ -	\$ 21,320	\$ 21,320
Adult Day Care/Adult Day Health Care	ELD or PWD	Group	\$ 15,829	\$ 5,000	\$ 20,829
Home Delivered Meals	ELD or PWD	Group	\$ 29,397	\$ 12,000	\$ 41,397
Transportation	ELD or PWD	Group	\$ 27,136	\$ -	\$ 27,136
Respite	ELD or PWD	Group	\$ 4,523	\$ -	\$ 4,523
Emergency Shelter	AFC	Group	\$ 40,703	\$ -	\$ 40,703
Transportation	ELD or PWD	Group		\$ 600	\$ 600
YUMA TOTALS			\$ 169,597	\$ 156,284	\$ 325,881
DISTRICT IV TOTALS			\$ 386,863	\$ 448,374	\$ 835,237

DIVISION OF AGING AND ADULT SERVICES (DAAS)
SFY 2020

DISTRICT V (GILA, PINAL COUNTIES)					
SERVICES	TARGET GROUP	STATUS ELIG.	LOCAL PLANNED	STATE PLANNED	LOCAL & STATE TOTAL
GILA COUNTY					
Home Care	ELD or PWD	Group	\$ 18,579	\$ 47,403	\$ 65,982
Program Development	ELD or PWD	Group	\$ -	\$ 925	\$ 925
Home Delivered Meals	ELD or PWD	Group	\$ 19,845	\$ 22,442	\$ 42,287
Home Repair/Renovation	ELD or PWD	Group	\$ 10,226	\$ -	\$ 10,226
Case Management	ELD or PWD	Group	\$ 26,228	\$ 28,990	\$ 55,218
Respite	ELD or PWD	Group	\$ -	\$ 4,709	\$ 4,709
Administrative Services	ELD or PWD	Group	\$ -	\$ 17,137	\$ 17,137
Emergency Shelter	Domestic Violence	Group	\$ 25,652	\$ -	\$ 25,652
Case Management	AFC	Group	\$ 8,048	\$ -	\$ 8,048
GILA COUNTY TOTALS			\$ 108,578	\$ 121,606	\$ 230,184
PINAL COUNTY					
Home Care	ELD/PWD	Group	\$ 8,486	\$ 113,125	\$ 121,611
Program Development	ELD or PWD	Group	\$ -	\$ 1,564	\$ 1,564
Administrative Services	ELD or PWD	Group	\$ -	\$ 27,219	\$ 27,219
Home Delivered Meals	ELD or PWD	Group	\$ 23,819	\$ 40,912	\$ 64,731
Home Repair/Renovation	ELD or PWD	Group	\$ 11,607	\$ -	\$ 11,607
Case Management	ELD or PWD	Group	\$ 30,120	\$ 57,891	\$ 88,011
Respite	ELD or PWD	Group	\$ -	\$ 5,977	\$ 5,977
Emergency Shelter	Domestic Violence	Group	\$ 50,802	\$ -	\$ 50,802
Case Management	AFC	Group	\$ 16,096	\$ -	\$ 16,096
PINAL COUNTY TOTALS			\$ 140,930	\$ 246,688	\$ 387,618
DISTRICT V TOTALS			\$ 249,508	\$ 368,294	\$ 617,802

DIVISION OF AGING AND ADULT SERVICES (DAAS)
SFY 2020

DISTRICT VI (COCHISE, GREENLEE, GRAHAM, SANTA CRUZ COUNTIES)					
SERVICES	TARGET GROUP	STATUS ELIG.	LOCAL PLANNED	STATE PLANNED	LOCAL & STATE TOTAL
COCHISE COUNTY					
Administrative Services	ELD or PWD	Group	\$ -	\$ 36,674	\$ 36,674
Home Care	ELD or PWD	Group	\$ 22,280	\$ 94,475	\$ 116,755
Home Delivered Meals	ELD or PWD	Group	\$ 62,594	\$ 19,434	\$ 82,028
Case Management	ELD or PWD	Group	\$ 7,073	\$ 65,965	\$ 73,038
Transportation	ELD or PWD	Group	\$ -	\$ 63,121	\$ 63,121
Congregate Meals	ELD or PWD	Group		\$ 699	\$ 699
Case Management	Domestic Violence	Group	\$ 32,128	\$ -	\$ 32,128
Domestic Violence	Domestic Violence	Group	\$ -	\$ 35,865	\$ 35,865
COCHISE TOTALS			\$ 124,075	\$ 316,233	\$ 440,308
GRAHAM COUNTY					
Home Care	ELD or PWD	Group	\$ 9,251	\$ 7,563	\$ 16,814
Administrative Services	ELD or PWD	Group	\$ -	\$ 10,000	\$ 10,000
Home Delivered Meals	ELD or PWD	Group	\$ 26,532	\$ -	\$ 26,532
Case Management	ELD or PWD	Group	\$ -	\$ 24,081	\$ 24,081
Transportation	ELD or PWD	Group	\$ -	\$ 11,068	\$ 11,068
GRAHAM TOTALS			\$ 35,783	\$ 52,712	\$ 88,495
GREENLEE COUNTY					
Home Care	ELD or PWD	Group	\$ 15,929	\$ 5,163	\$ 21,092
Administrative Services	ELD or PWD	Group	\$ -	\$ 2,000	\$ 2,000
Home Delivered Meals	ELD or PWD	Group	\$ 20,328	\$ -	\$ 20,328
Transportation	ELD or PWD	Group	\$ 6,026	\$ 2,000	\$ 8,026
Case Management	ELD or PWD	Group	\$ -	\$ 8,213	\$ 8,213
GREENLEE TOTALS			\$ 42,283	\$ 17,376	\$ 59,659

DIVISION OF AGING AND ADULT SERVICES (DAAS)
SFY 2020

SANTA CRUZ COUNTY					
Home Care	ELD or PWD	Group	\$ 10,793	\$ 5,624	\$ 16,417
Administrative Services	ELD or PWD	Group	\$ -	\$ 10,000	\$ 10,000
Home Delivered Meals	ELD or PWD	Group	\$ 23,725	\$ -	\$ 23,725
Case Management	ELD or PWD	Group	\$ -	\$ 28,265	\$ 28,265
SANTA CRUZ TOTALS			\$ 34,518	\$ 43,889	\$ 78,407
DISTRICT VI TOTALS			\$ 236,659	\$ 430,210	\$ 666,869

TRIBAL AND STATEWIDE

SERVICES	TARGET GROUP	STATUS ELIG.	LOCAL PLANNED	STATE PLANNED	LOCAL & STATE TOTAL
Tribal Entities Home Based Services (Tribal Allocations Chart on page 4 of this Plan)	ELD or PWD	Group	\$ 639,670	\$ -	\$ 639,670
Home Care	ELD or PWD	Group		\$ 3,990,948	\$ 3,990,948
Coordination Community	AFC - Homeless	Group	\$ -	\$ 12,000	\$ 12,000
Coordination Community	AFC - Domestic Violence	Group	\$ -	\$ 20,501	\$ 20,501
Coordination Community: Food Bank	AFC - Hunger	Group	\$ -	\$ 247,541	\$ 247,541
TRIBAL AND STATEWIDE TOTALS			\$ 639,670	\$ 4,270,990	\$ 4,910,660

ALL DAAS SERVICES

	LOCAL PLANNED	STATE PLANNED	LOCAL & STATE TOTAL
DAAS TOTALS	\$ 6,143,795	\$ 9,793,087	\$ 15,936,882

DIVISION OF DEVELOPMENTAL DISABILITIES (DDD)
SFY 2020

DISTRICT III (APACHE, COCONINO, NAVAJO, YAVAPAI COUNTIES)					
SERVICES	TARGET GROUP	STATUS ELIG.	LOCAL PLANNED	STATE PLANNED	LOCAL & STATE TOTAL
COCONINO COUNTY					
Supported Employment	DD Adults	Group	\$ 33,797	\$ -	\$ 33,797
COCONINO TOTALS			\$ 33,797	\$ -	\$ 33,797
YAVAPAI COUNTY					
Supported Employment	DD Adults	Group	\$ 4,000	\$ -	\$ 4,000
YAVAPAI TOTALS			\$ 4,000	\$ -	\$ 4,000
DISTRICT III TOTALS			\$ 37,797	\$ -	\$ 37,797

DISTRICT V (GILA, PINAL COUNTIES)					
SERVICES	TARGET GROUP	STATUS ELIG.	LOCAL PLANNED	STATE PLANNED	LOCAL & STATE TOTAL
GILA COUNTY					
Employment Related Services	DD	Group	\$ 21,118	\$ -	\$ 21,118
GILA TOTALS			\$ 21,118	\$ -	\$ 21,118
PINAL COUNTY					
Employment Related Services	DD	Group	\$ 42,243	\$ -	\$ 42,243
PINAL TOTALS			\$ 42,243	\$ -	\$ 42,243
DISTRICT V TOTALS			\$ 63,361	\$ -	\$ 63,361

**DIVISION OF DEVELOPMENTAL DISABILITIES (DDD)
SFY 2020**

DISTRICT VI (COCHISE, GRAHAM, GREENLEE, SANTA CRUZ COUNTIES)					
SERVICES	TARGET GROUP	STATUS ELIG.	LOCAL PLANNED	STATE PLANNED	LOCAL & STATE
	AD-DD	Group			
COCHISE COUNTY					
Employment Related Services			\$ 31,917	\$ -	\$ 31,917
COCHISE TOTALS			\$ 31,917	\$ -	\$ 31,917
	AD-DD	Group			
GRAHAM COUNTY					
Employment Related Services			\$ 21,590	\$ -	\$ 21,590
GRAHAM TOTALS			\$ 21,590	\$ -	\$ 21,590
	CH-DD	Group			
GREENLEE COUNTY					
Day Treatment and Training			\$ 4,375	\$ -	\$ 4,375
GREENLEE TOTALS			\$ 4,375	\$ -	\$ 4,375
	AD-DD	Group			
SANTA CRUZ COUNTY					
Employment Related Services			\$ 34,628	\$ -	\$ 34,628
SANTA CRUZ TOTALS			\$ 34,628	\$ -	\$ 34,628
DISTRICT VI TOTALS			\$ 92,510	\$ -	\$ 92,510

ALL DDD SERVICES			
	LOCAL PLANNED	STATE PLANNED	LOCAL & STATE
DDD TOTALS	\$ 193,668	\$ -	\$ 193,668

**WORKFORCE DEVELOPMENT ADMINISTRATION (WDA)
SFY 2020**

DISTRICT II (PIMA COUNTY)					
SERVICES	TARGET GROUP	STATUS ELIG.	LOCAL PLANNED	STATE PLANNED	LOCAL & STATE TOTAL
Employment Services	AD	Group	\$ 40,424	\$ -	\$ 40,424
District II TOTALS			\$ 40,424	\$ -	\$ 40,424
DISTRICT IV (YUMA COUNTY)					
Employment Related Services	AD	Group	\$ 42,108	\$ -	\$ 42,108
District IV TOTALS			\$ 42,108	\$ -	\$ 42,108
ALL WA SERVICES					
			LOCAL PLANNED	STATE PLANNED	LOCAL & STATE TOTAL
WDA TOTALS			\$ 82,532	\$ -	\$ 82,532

**REHABILITATION SERVICES ADMINISTRATION (RSA)
SFY 2020**

DISTRICT I (MARICOPA COUNTY)					
SERVICES	TARGET GROUP	STATUS ELIG.	LOCAL PLANNED	STATE PLANNED	LOCAL & STATE TOTAL
Adaptive Aids and Devices	PWD	Group	\$ 1,958	\$ -	\$ 1,958
Supported Employment, Extended	PWD	Group	\$ 42,055	\$ -	\$ 42,055
Rehabilitation Instructional Services	PWD	Group	\$ 2,581	\$ -	\$ 2,581
DISTRICT I TOTALS			\$ 46,594	\$ -	\$ 46,594

DISTRICT II (PIMA COUNTY)					
SERVICES	TARGET GROUP	STATUS ELIG.	LOCAL PLANNED	STATE PLANNED	LOCAL & STATE TOTAL
Interpreter	PWD (Deaf) Adults	Group	\$ 23,217	\$ -	\$ 23,217
Supportive Intervention/Guidance Counseling	PWD Hearing Impaired	Group	\$ 33,155	\$ -	\$ 33,155
DISTRICT II TOTALS			\$ 56,372	\$ -	\$ 56,372

DISTRICT III (APACHE, COCONINO, NAVAJO, YAVAPAI COUNTIES)					
SERVICES	TARGET GROUP	STATUS ELIG.	LOCAL PLANNED	STATE PLANNED	LOCAL & STATE TOTAL
COCONINO COUNTY					
Extended Supported Employment	PWD Adults	Group	\$ 7,218	\$ -	\$ 7,218
COCONINO TOTALS			\$ 7,218	\$ -	\$ 7,218
NAVAJO COUNTY					
Job Training	PWD Adults	Group	\$ 12,588	\$ -	\$ 12,588
NAVAJO TOTALS			\$ 12,588	\$ -	\$ 12,588
YAVAPAI COUNTY					
Extended Supported Employment	PWD Adults	Group	\$ 4,000	\$ -	\$ 4,000
YAVAPAI TOTALS			\$ 4,000	\$ -	\$ 4,000
DISTRICT III TOTALS			\$ 23,806	\$ -	\$ 23,806

**REHABILITATION SERVICES ADMINISTRATION (RSA)
SFY 2020**

DISTRICT V (GILA, PINAL COUNTIES)					
SERVICES	TARGET GROUP	STATUS ELIG.	LOCAL PLANNED	STATE PLANNED	LOCAL & STATE TOTAL
GILA COUNTY	PWD	Group	\$ 11,440	\$ -	\$ 11,440
Extended Supported Employment					
GILA TOTALS			\$ 11,440	\$ -	\$ 11,440
PINAL COUNTY	PWD	Group	\$ 18,250	\$ -	\$ 18,250
Extended Supported Employment					
PINAL TOTALS			\$ 18,250	\$ -	\$ 18,250
DISTRICT V TOTALS			\$ 29,690	\$ -	\$ 29,690

STATEWIDE					
SERVICES	TARGET GROUP	STATUS ELIG.	LOCAL PLANNED	STATE PLANNED	LOCAL & STATE TOTAL
Comprehensive Disability Related Services	PWD	Group		\$ 22,000	\$ 22,000
Supported Employment, Extended	PWD	Group	\$ -	\$ 10,000	\$ 10,000
Independent Living	PWD	Group		\$ 493,918	\$ 493,918
STATEWIDE TOTALS			\$ -	\$ 525,918	\$ 525,918

ALL RSA SERVICES			
	LOCAL PLANNED	STATE PLANNED	LOCAL & STATE TOTAL
RSA TOTALS	\$ 156,462	\$ 525,918	\$ 682,380

**PLANNED SFY 2020 SSBG SERVICE ALLOCATIONS
LISTED BY FEDERAL SSBG SERVICE DEFINITIONS NUMBERS 1 - 29
INDICATING THE RESPONSIBLE DIVISION/ADMINISTRATION/DEPARTMENT
THAT PROVIDES OR CONTRACTS FOR THE SERVICE**

SVC CODE	SERVICE (SVC) TITLE	ADMIN	ALLOCATION
1.	Adoption Services	DAAS	\$ -
		RSA	\$ -
		WDA	\$ -
		CCA	\$ -
		DDD	\$ -
		ADCS	\$ -
		TOTAL	\$ -
2.	Case Management Services	DAAS	\$ 2,981,907
		RSA	\$ -
		WDA	\$ -
		CCA	\$ -
		DDD	\$ -
		ADCS	\$ 5,500,868
		TOTAL	\$ 8,482,775
3.	Congregate Meals	DAAS	\$ 3,574
		RSA	\$ -
		WDA	\$ -
		CCA	\$ -
		DDD	\$ -
		ADCS	\$ -
		TOTAL	\$ 3,574
4.	Counseling Services	DAAS	\$ -
		RSA	\$ -
		WDA	\$ -
		CCA	\$ -
		DDD	\$ -
		ADCS	\$ -
		TOTAL	\$ -

**PLANNED SFY 2020 SSBG SERVICE ALLOCATIONS
LISTED BY FEDERAL SSBG SERVICE DEFINITIONS NUMBERS 1 - 29
INDICATING THE RESPONSIBLE DIVISION/ADMINISTRATION/DEPARTMENT
THAT PROVIDES OR CONTRACTS FOR THE SERVICE**

SVC CODE	SERVICE (SVC) TITLE	ADMIN	ALLOCATION
5.	Day Care Services--Adults	DAAS	\$ 259,969
		RSA	\$ -
		WDA	\$ -
		CCA	\$ -
		DDD	\$ -
		ADCS	\$ -
		TOTAL	\$ 259,969
6.	Day Care Services--Children	DAAS	\$ -
		RSA	\$ -
		WDA	\$ -
		CCA	\$ 257,927
		DDD	\$ -
		ADCS	\$ -
		TOTAL	\$ 257,927
7.	Education and Training Services	DAAS	\$ -
		RSA	\$ -
		WDA	\$ -
		CCA	\$ -
		DDD	\$ -
		ADCS	\$ -
		TOTAL	\$ -
8.	Employment Services	DAAS	\$ -
		RSA	\$ -
		WDA	\$ 82,532
		CCA	\$ -
		DDD	\$ -
		ADCS	\$ -
		TOTAL	\$ 82,532

**PLANNED SFY 2020 SSBG SERVICE ALLOCATIONS
LISTED BY FEDERAL SSBG SERVICE DEFINITIONS NUMBERS 1 - 29
INDICATING THE RESPONSIBLE DIVISION/ADMINISTRATION/DEPARTMENT
THAT PROVIDES OR CONTRACTS FOR THE SERVICE**

SVC CODE	SERVICE (SVC) TITLE	ADMIN	ALLOCATION	
9.	Family Planning Services	DAAS	\$	-
		RSA	\$	-
		WDA	\$	-
		CCA	\$	-
		DDD	\$	-
		ADCS	\$	-
		TOTAL	\$	-
10.	Foster Care Services for Adults	DAAS	\$	-
		RSA	\$	-
		WDA	\$	-
		CCA	\$	-
		DDD	\$	-
		ADCS	\$	-
		TOTAL	\$	-
11.	Foster Care Services for Children	DAAS	\$	-
		RSA	\$	-
		WDA	\$	-
		CCA	\$	-
		DDD	\$	-
		ADCS	\$	25,790,231
		TOTAL	\$	25,790,231
12.	Health Related and Home Health Services	DAAS	\$	9,061
		RSA	\$	-
		WDA	\$	-
		CCA	\$	-
		DDD	\$	-
		ADCS	\$	-
		TOTAL	\$	9,061

**PLANNED SFY 2020 SSBG SERVICE ALLOCATIONS
LISTED BY FEDERAL SSBG SERVICE DEFINITIONS NUMBERS 1 - 29
INDICATING THE RESPONSIBLE DIVISION/ADMINISTRATION/DEPARTMENT
THAT PROVIDES OR CONTRACTS FOR THE SERVICE**

SVC CODE	SERVICE (SVC) TITLE	ADMIN	ALLOCATION
13.	Home Based Services	DAAS	\$ 9,080,324
		RSA	\$ -
		WDA	\$ -
		CCA	\$ -
		DDD	\$ -
		ADCS	\$ 1,191,442
		TOTAL	\$ 10,271,766
14.	Home Delivered Meals	DAAS	\$ 1,037,194
		RSA	\$ -
		WDA	\$ -
		CCA	\$ -
		DDD	\$ -
		ADCS	\$ -
		TOTAL	\$ 1,037,194
15.	Housing Services	DAAS	\$ 873,935
		RSA	\$ -
		WDA	\$ -
		CCA	\$ -
		DDD	\$ -
		ADCS	\$ -
		TOTAL	\$ 873,935
16.	Independent and Transitional Living Services	DAAS	\$ -
		RSA	\$ -
		WDA	\$ -
		CCA	\$ -
		DDD	\$ -
		ADCS	\$ -
		TOTAL	\$ -

**PLANNED SFY 2020 SSBG SERVICE ALLOCATIONS
LISTED BY FEDERAL SSBG SERVICE DEFINITIONS NUMBERS 1 - 29
INDICATING THE RESPONSIBLE DIVISION/ADMINISTRATION/DEPARTMENT
THAT PROVIDES OR CONTRACTS FOR THE SERVICE**

SVC CODE	SERVICE (SVC) TITLE	ADMIN	ALLOCATION
17.	Information and Referral	DAAS	\$ 88,621
		RSA	\$ -
		WDA	\$ -
		CCA	\$ -
		DDD	\$ -
		ADCS	\$ -
		TOTAL	\$ 88,621
18.	Legal Services	DAAS	\$ 114,946
		RSA	\$ -
		WDA	\$ -
		CCA	\$ -
		DDD	\$ -
		ADCS	\$ 1,423,764
		TOTAL	\$ 1,538,710
19.	Pregnancy and Parenting Services for Young Parents	DAAS	\$ -
		RSA	\$ -
		WDA	\$ -
		CCA	\$ -
		DDD	\$ -
		ADCS	\$ 11,644
		TOTAL	\$ 11,644
20.	Prevention and Intervention Services	DAAS	\$ 944,615
		RSA	\$ 33,155
		WDA	\$ -
		CCA	\$ -
		DDD	\$ -
		ADCS	\$ 793,996
		TOTAL	\$ 1,771,766

PLANNED SFY 2020 SSBG SERVICE ALLOCATIONS
LISTED BY FEDERAL SSBG SERVICE DEFINITIONS NUMBERS 1 - 29
INDICATING THE RESPONSIBLE DIVISION/ADMINISTRATION/DEPARTMENT
THAT PROVIDES OR CONTRACTS FOR THE SERVICE

SVC CODE	SERVICE (SVC) TITLE	ADMIN	ALLOCATION
21.	Protective Services for Adults	DAAS	\$ 45,425
		RSA	\$ -
		WDA	\$ -
		CCA	\$ -
		DDD	\$ -
		ADCS	\$ -
		TOTAL	\$ 45,425
22.	Protective Services for Children	DAAS	\$ -
		RSA	\$ -
		WDA	\$ -
		CCA	\$ -
		DDD	\$ -
		ADCS	\$ -
		TOTAL	\$ -
23.	Recreational Services	DAAS	\$ -
		RSA	\$ -
		WDA	\$ -
		CCA	\$ -
		DDD	\$ -
		ADCS	\$ -
		TOTAL	\$ -
24.	Residential Treatment Services	DAAS	\$ -
		RSA	\$ -
		WDA	\$ -
		CCA	\$ -
		DDD	\$ -
		ADCS	\$ -
		TOTAL	\$ -

PLANNED SFY 2020 SSBG SERVICE ALLOCATIONS
LISTED BY FEDERAL SSBG SERVICE DEFINITIONS NUMBERS 1 - 29
INDICATING THE RESPONSIBLE DIVISION/ADMINISTRATION/DEPARTMENT
THAT PROVIDES OR CONTRACTS FOR THE SERVICE

SVC CODE	SERVICE (SVC) TITLE	ADMIN	ALLOCATION
25.	Special Services for Persons with Developmental or Physical Disabilities	DAAS	\$ -
		RSA	\$ 649,225
		WDA	\$ -
		CCA	\$ -
		DDD	\$ 193,668
		ADCS	\$ -
		TOTAL	\$ 842,893
26.	Special Services for Youth Involved in or at Risk of Involvement with Criminal Activity	DAAS	\$ -
		RSA	\$ -
		WDA	\$ -
		CCA	\$ -
		DDD	\$ -
		ADCS	\$ 46,824
		TOTAL	\$ 46,824
27.	Substance Abuse Services	DAAS	\$ -
		RSA	\$ -
		WDA	\$ -
		CCA	\$ -
		DDD	\$ -
		ADCS	\$ -
		TOTAL	\$ -
28.	Transportation Services	DAAS	\$ 217,269
		RSA	\$ -
		WDA	\$ -
		CCA	\$ -
		DDD	\$ -
		ADCS	\$ -
		TOTAL	\$ 217,269
29.	Other Services (Coordination, Consultation, Program Occupancy)	DAAS	\$ 280,042
		RSA	\$ -
		WDA	\$ -
		CCA	\$ -
		DDD	\$ -
		ADCS	\$ 29,993
		Prog. Occupancy	\$ 550,300
		TOTAL	\$ 860,335

**PLANNED SFY 2020 SSBG SERVICE ALLOCATIONS
LISTED BY FEDERAL SSBG SERVICE DEFINITIONS NUMBERS 1 - 29
INDICATING THE RESPONSIBLE DIVISION/ADMINISTRATION/DEPARTMENT
THAT PROVIDES OR CONTRACTS FOR THE SERVICE**

SVC CODE	SERVICE (SVC) TITLE	ADMIN	ALLOCATION
30.	Total of the SFY 2020 Planned SSBG Funding Allocations Listed Above for Federal Service Definitions Numbers 1 Through 29		TOTAL \$ 52,492,451
31.	Administrative Costs	ADES	\$ 1,316,228
			TOTAL \$ 1,316,228

All SFY 2020 State and Locally
Planned SSBG Funding Allocations
Listed by the
Administration/Division/Department
Responsible for Providing or
Contracting for the Services

DCS	\$	34,788,762
DDD	\$	193,668
RSA	\$	682,380
CCA	\$	257,927
WDA	\$	82,532
DAAS	\$	15,936,882
Prog. Occupancy	\$	550,300
Administrative	\$	1,316,228
TOTAL	\$	53,808,679

APPENDIX A

PUBLIC NOTICE

PUBLIC NOTICE

Issue Date: March 15, 2019

ARIZONA DEPARTMENT OF ECONOMIC SECURITY PUBLIC COMMENT ON THE STATE OF ARIZONA SOCIAL SERVICES BLOCK GRANT (SSBG) PLAN JULY 1, 2019 – JUNE 30, 2020

The Arizona Department of Economic Security (ADES) requests public comment on the above-referenced plan.

A copy of the proposed plan is available for public inspection on the ADES Internet website at the link below.

<https://des.az.gov/2020ssbg>

The Department will accept written comments on the plan sent to any of the following addresses:

E-mail: ssbginput@azdes.gov

Fax: (602) 542-6000

Mail: Arizona Department of Economic Security
ATTN: Rod Huenemann
P.O. Box 6123, Mail Drop 1292
Phoenix, Arizona 85005

Written comments should be sent so that the Department will receive them **before 5:00 PM, Friday, April 5, 2019**, and should include contact information for the person providing comments, as well as the name of any organization that person represents. Questions may be directed to Rod Huenemann at (602) 542-3882.

THIS DOCUMENT IS AVAILABLE IN ALTERNATIVE FORMAT BY CONTACTING ROD HUENEMANN AT (602) 542-3882 OR AT THE ADDRESS SPECIFIED ABOVE. REQUESTS SHOULD BE MADE AS EARLY AS POSSIBLE TO ALLOW TIME TO ARRANGE THE ACCOMMODATION.

APPENDIX B

CERTIFICATIONS

1. Certification Regarding Lobbying
2. Certification Regarding Drug-Free Workplace Requirements
3. Certification Regarding Debarment, Suspension and Other Responsibility Matters
4. Certification Regarding Environmental Tobacco Smoke

CERTIFICATION REGARDING LOBBYING

Certification for Contracts, Grants, Loans, and Cooperative Agreements

The undersigned certifies, to the best of his or her knowledge and belief, that:

(1) No Federal appropriated funds have been paid or will be paid, by or on behalf of the undersigned, to any person for influencing or attempting to influence an officer or employee of an agency, a Member of Congress, an officer or employee of Congress, or an employee of a Member of Congress in connection with the awarding of any Federal contract, the making of any Federal grant, the making of any Federal loan, the entering into of any cooperative agreement, and the extension, continuation, renewal, amendment, or modification of any Federal contract, grant, loan, or cooperative agreement.

(2) If any funds other than Federal appropriated funds have been paid or will be paid to any person for influencing or attempting to influence an officer or employee of any agency, a Member of Congress, an officer or employee of Congress, or an employee of a Member of Congress in connection with this Federal contract, grant, loan, or cooperative agreement, the undersigned shall complete and submit Standard Form-LLL, ``Disclosure Form to Report Lobbying," in accordance with its instructions.

(3) The undersigned shall require that the language of this certification be included in the award documents for all subawards at all tiers (including subcontracts, subgrants, and contracts under grants, loans, and cooperative agreements) and that all subrecipients shall certify and disclose accordingly. This certification is a material representation of fact upon which reliance was placed when this transaction was made or entered into. Submission of this certification is a prerequisite for making or entering into this transaction imposed by section 1352, title 31, U.S. Code. Any person who fails to file the required certification shall be subject to a civil penalty of not less than \$10,000 and not more than \$100,000 for each such failure.

Statement for Loan Guarantees and Loan Insurance

The undersigned states, to the best of his or her knowledge and belief, that:

If any funds have been paid or will be paid to any person for influencing or attempting to influence an officer or employee of any agency, a Member of Congress, an officer or employee of Congress, or an employee of a Member of Congress in connection with this commitment providing for the United States to insure or guarantee a loan, the undersigned shall complete and submit Standard Form-LLL, ``Disclosure Form to Report Lobbying," in accordance with its instructions. Submission of this statement is a prerequisite for making or entering into this transaction imposed by section 1352, title 31, U.S. Code. Any person who fails to file the required statement shall be subject to a civil penalty of not less than \$10,000 and not more than \$100,000 for each such failure.

Signature

Director Michael Traylor

Title

Arizona Department of Economic Security

Organization

CERTIFICATION REGARDING DRUG-FREE WORKPLACE REQUIREMENTS

This certification is required by the regulations implementing the Drug-Free Workplace Act of 1988: 45 CFR Part 76, Subpart, F. Sections 76.630(c) and (d)(2) and 76.645(a)(1) and (b) provide that a Federal agency may designate a central receipt point for STATE-WIDE AND STATE AGENCY-WIDE certifications, and for notification of criminal drug convictions. For the Department of Health and Human Services, the central point is: Division of Grants Management and Oversight, Office of Management and Acquisition, Department of Health and Human Services, Room 517-D, 200 Independence Avenue, SW Washington, DC 20201.

Certification Regarding Drug-Free Workplace Requirements (Instructions for Certification)

1. By signing and/or submitting this application or grant agreement, the grantee is providing the certification set out below.
2. The certification set out below is a material representation of fact upon which reliance is placed when the agency awards the grant. If it is later determined that the grantee knowingly rendered a false certification, or otherwise violates the requirements of the Drug-Free Workplace Act, the agency, in addition to any other remedies available to the Federal Government, may take action authorized under the Drug-Free Workplace Act.
3. For grantees other than individuals, Alternate I applies.
4. For grantees who are individuals, Alternate II applies.
5. Workplaces under grants, for grantees other than individuals, need not be identified on the certification. If known, they may be identified in the grant application. If the grantee does not identify the workplaces at the time of application, or upon award, if there is no application, the grantee must keep the identity of the workplace(s) on file in its office and make the information available for Federal inspection. Failure to identify all known workplaces constitutes a violation of the grantee's drug-free workplace requirements.
6. Workplace identifications must include the actual address of buildings (or parts of buildings) or other sites where work under the grant takes place. Categorical descriptions may be used (e.g., all vehicles of a mass transit authority or State highway department while in operation, State employees in each local unemployment office, performers in concert halls or radio studios).
7. If the workplace identified to the agency changes during the performance of the grant, the grantee shall inform the agency of the change(s), if it previously identified the workplaces in question (see paragraph five).
8. Definitions of terms in the Nonprocurement Suspension and Debarment common rule and Drug-Free Workplace common rule apply to this certification. Grantees' attention is called, in particular, to the following definitions from these rules:

Controlled substance means a controlled substance in Schedules I through V of the Controlled Substances Act (21 U.S.C. 812) and as further defined by regulation (21 CFR 1308.11 through 1308.15);

Conviction means a finding of guilt (including a plea of nolo contendere) or imposition of sentence, or both, by any judicial body charged with the responsibility to determine violations of

the federal or state criminal drug statutes;

Criminal drug statute means a Federal or non-Federal criminal statute involving the manufacture, distribution, dispensing, use, or possession of any controlled substance;

Employee means the employee of a grantee directly engaged in the performance of work under a grant, including: (i) All direct charge employees; (ii) All indirect charge employees unless their impact or involvement is insignificant to the performance of the grant; and, (iii) Temporary personnel and consultants who are directly engaged in the performance of work under the grant and who are on the grantee's payroll. This definition does not include workers not on the payroll of the grantee (e.g., volunteers, even if used to meet a matching requirement; consultants or independent contractors not on the grantee's payroll; or employees of subrecipients or subcontractors in covered workplaces).

Certification Regarding Drug-Free Workplace Requirements Alternate I. (Grantees Other Than Individuals)

The grantee certifies that it will or will continue to provide a drug-free workplace by:

- (a) Publishing a statement notifying employees that the unlawful manufacture, distribution, dispensing, possession, or use of a controlled substance is prohibited in the grantee's workplace and specifying the actions that will be taken against employees for violation of such prohibition;
 - (b) Establishing an ongoing drug-free awareness program to inform employees about --
 - (1) The dangers of drug abuse in the workplace;
 - (2) The grantee's policy of maintaining a drug-free workplace;
 - (3) Any available drug counseling, rehabilitation, and employee assistance programs; and
 - (4) The penalties that may be imposed upon employees for drug abuse violations occurring in the workplace;
 - (c) Making it a requirement that each employee to be engaged in the performance of the grant be given a copy of the statement required by paragraph (a);
 - (d) Notifying the employee in the statement required by paragraph (a) that, as a condition of employment under the grant, the employee will --
 - (1) Abide by the terms of the statement; and
 - (2) Notify the employer in writing of his or her conviction for a violation of a criminal drug statute occurring in the workplace no later than five calendar days after such conviction;
 - (e) Notifying the agency in writing, within ten calendar days after receiving notice under paragraph (d)(2) from an employee or otherwise receiving actual notice of such conviction. Employers of convicted employees must provide notice, including position title, to every grant officer or other designee on whose grant activity the convicted employee was working, unless the Federal agency has designated a central point for the receipt of such notices. Notice shall include the identification number(s) of each affected grant;
 - (f) Taking one of the following actions, within 30 calendar days of receiving notice under paragraph (d)(2), with respect to any employee who is so convicted --
 - (1) Taking appropriate personnel action against such an employee, up to and including termination, consistent with the requirements of the Rehabilitation Act of 1973, as amended; or
 - (2) Requiring such employee to participate satisfactorily in a drug abuse assistance or rehabilitation program approved for such purposes by a Federal, State, or local health, law enforcement, or other appropriate agency;
 - (g) Making a good faith effort to continue to maintain a drug-free workplace through implementation of paragraphs (a), (b), (c), (d), (e) and (f).
- (B) The grantee may insert in the space provided below the site(s) for the performance of work done in connection with the specific grant:

Place of Performance (Street address, city, county, state, zip code)

Check if there are workplaces on file that are not identified here.

Alternate II. (Grantees Who Are Individuals)

(a) The grantee certifies that, as a condition of the grant, he or she will not engage in the unlawful manufacture, distribution, dispensing, possession, or use of a controlled substance in conducting any activity with the grant;

(b) If convicted of a criminal drug offense resulting from a violation occurring during the conduct of any grant activity, he or she will report the conviction, in writing, within 10 calendar days of the conviction, to every grant officer or other designee, unless the Federal agency designates a central point for the receipt of such notices. When notice is made to such a central point, it shall include the identification number(s) of each affected grant.

[55 FR 21690, 21702, May 25, 1990]

Signature

Director Michael Traylor

Title

Arizona Department of Economic Security

Organization

CERTIFICATION REGARDING DEBARMENT, SUSPENSION AND OTHER RESPONSIBILITY MATTERS

Certification Regarding Debarment, Suspension, and Other Responsibility Matters--Primary Covered Transactions

Instructions for Certification

1. By signing and submitting this proposal, the prospective primary participant is providing the certification set out below.

2. The inability of a person to provide the certification required below will not necessarily result in denial of participation in this covered transaction. The prospective participant shall submit an explanation of why it cannot provide the certification set out below. The certification or explanation will be considered in connection with the department or agency's determination whether to enter into this transaction. However, failure of the prospective primary participant to furnish a certification or an explanation shall disqualify such person from participation in this transaction.

3. The certification in this clause is a material representation of fact upon which reliance was placed when the department or agency determined to enter into this transaction. If it is later determined that the prospective primary participant knowingly rendered an erroneous certification, in addition to other remedies available to the Federal Government, the department or agency may terminate this transaction for cause or default.

4. The prospective primary participant shall provide immediate written notice to the department or agency to which this proposal is submitted if at any time the prospective primary participant learns that its certification was erroneous when submitted or has become erroneous by reason of changed circumstances.

5. The terms covered transaction, debarred, suspended, ineligible, lower tier covered transaction, participant, person, primary covered transaction, principal, proposal, and voluntarily excluded, as used in this clause, have the meanings set out in the Definitions and Coverage sections of the rules implementing Executive Order 12549. You may contact the department or agency to which this proposal is being submitted for assistance in obtaining a copy of those regulations.

6. The prospective primary participant agrees by submitting this proposal that, should the proposed covered transaction be entered into, it shall not knowingly enter into any lower tier covered transaction with a person who is proposed for debarment under 48 CFR part 9, subpart 9.4, debarred, suspended, declared ineligible, or voluntarily excluded from participation in this covered transaction, unless authorized by the department or agency entering into this transaction.

7. The prospective primary participant further agrees by submitting this proposal that it will include the clause titled "Certification Regarding Debarment, Suspension, Ineligibility and Voluntary Exclusion-Lower Tier Covered Transaction," provided by the department or agency entering into this covered transaction, without modification, in all lower tier covered transactions and in all solicitations for lower tier covered transactions.

8. A participant in a covered transaction may rely upon a certification of a prospective participant in a lower tier covered transaction that it is not proposed for debarment under 48 CFR part 9, subpart 9.4, debarred, suspended, ineligible, or voluntarily excluded from the covered transaction, unless it knows that the certification is erroneous. A participant may decide the method and frequency by which it determines the eligibility of its principals. Each participant may, but is not required to, check the List of Parties Excluded from Federal Procurement and Nonprocurement Programs.

9. Nothing contained in the foregoing shall be construed to require establishment of a system of records in order to render in good faith the certification required by this clause. The knowledge and information of a participant is not required to exceed that which is normally possessed by a prudent person in the ordinary course of business dealings.

10. Except for transactions authorized under paragraph 6 of these instructions, if a participant in a covered transaction knowingly enters into a lower tier covered transaction with a person who is proposed for debarment under 48 CFR part 9, subpart 9.4, suspended, debarred, ineligible, or voluntarily excluded from participation in this transaction, in addition to other remedies available to the Federal Government, the department or agency may terminate this transaction for cause or default.

Certification Regarding Debarment, Suspension, and Other Responsibility Matters--Primary Covered Transactions

(1) The prospective primary participant certifies to the best of its knowledge and belief, that it and its principals:

(a) Are not presently debarred, suspended, proposed for debarment, declared ineligible, or voluntarily excluded by any Federal department or agency;

(b) Have not within a three-year period preceding this proposal been convicted of or had a civil judgment rendered against them for commission of fraud or a criminal offense in connection with obtaining, attempting to obtain, or performing a public (Federal, State or local) transaction or contract under a public transaction; violation of Federal or State antitrust statutes or commission of embezzlement, theft, forgery, bribery, falsification or destruction of records, making false statements, or receiving stolen property;

(c) Are not presently indicted for or otherwise criminally or civilly charged by a governmental entity (Federal, State or local) with commission of any of the offenses enumerated in paragraph (1)(b) of this certification; and

(d) Have not within a three-year period preceding this application/proposal had one or more public transactions (Federal, State or local) terminated for cause or default.

(2) Where the prospective primary participant is unable to certify to any of the statements in this certification, such prospective participant shall attach an explanation to this proposal.

Certification Regarding Debarment, Suspension, Ineligibility and Voluntary Exclusion--Lower Tier Covered Transactions Instructions for Certification

1. By signing and submitting this proposal, the prospective lower tier participant is providing the certification set out below.

2. The certification in this clause is a material representation of fact upon which reliance was placed when this transaction was entered into. If it is later determined that the prospective lower tier participant knowingly rendered an erroneous certification, in addition to other remedies available to the Federal Government the department or agency with which this transaction originated may pursue available remedies, including suspension and/or debarment.

3. The prospective lower tier participant shall provide immediate written notice to the person to which this proposal is submitted if at any time the prospective lower tier participant learns that its certification was erroneous when submitted or had become erroneous by reason of changed circumstances.

4. The terms covered transaction, debarred, suspended, ineligible, lower tier covered transaction, participant, person, primary covered transaction, principal, proposal, and voluntarily excluded, as used in this clause, have the meaning set out in the Definitions and Coverage sections of rules implementing Executive Order 12549. You may contact the person to which this proposal is submitted for assistance in obtaining a copy of those regulations.

5. The prospective lower tier participant agrees by submitting this proposal that, [[Page 33043]] should the proposed covered transaction be entered into, it shall not knowingly enter

into any lower tier covered transaction with a person who is proposed for debarment under 48 CFR part 9, subpart 9.4, debarred, suspended, declared ineligible, or voluntarily excluded from participation in this covered transaction, unless authorized by the department or agency with which this transaction originated.

6. The prospective lower tier participant further agrees by submitting this proposal that it will include this clause titled "Certification Regarding Debarment, Suspension, Ineligibility and Voluntary Exclusion-Lower Tier Covered Transaction," without modification, in all lower tier covered transactions and in all solicitations for lower tier covered transactions.

7. A participant in a covered transaction may rely upon a certification of a prospective participant in a lower tier covered transaction that it is not proposed for debarment under 48 CFR part 9, subpart 9.4, debarred, suspended, ineligible, or voluntarily excluded from covered transactions, unless it knows that the certification is erroneous. A participant may decide the method and frequency by which it determines the eligibility of its principals. Each participant may, but is not required to, check the List of Parties Excluded from Federal Procurement and Nonprocurement Programs.

8. Nothing contained in the foregoing shall be construed to require establishment of a system of records in order to render in good faith the certification required by this clause. The knowledge and information of a participant is not required to exceed that which is normally possessed by a prudent person in the ordinary course of business dealings.

9. Except for transactions authorized under paragraph 5 of these instructions, if a participant in a covered transaction knowingly enters into a lower tier covered transaction with a person who is proposed for debarment under 48 CFR part 9, subpart 9.4, suspended, debarred, ineligible, or voluntarily excluded from participation in this transaction, in addition to other remedies available to the Federal Government, the department or agency with which this transaction originated may pursue available remedies, including suspension and/or debarment.

Certification Regarding Debarment, Suspension, Ineligibility an Voluntary Exclusion--Lower Tier Covered Transactions

(1) The prospective lower tier participant certifies, by submission of this proposal, that neither it nor its principals is presently debarred, suspended, proposed for debarment, declared ineligible, or voluntarily excluded from participation in this transaction by any Federal department or agency.

(2) Where the prospective lower tier participant is unable to certify to any of the statements in this certification, such prospective participant shall attach an explanation to this proposal.

Signature

Director Michael Traylor

Title

Arizona Department of Economic Security

Organization

CERTIFICATION REGARDING ENVIRONMENTAL TOBACCO SMOKE

Public Law 103-227, Part C Environmental Tobacco Smoke, also known as the Pro Children Act of 1994, requires that smoking not be permitted in any portion of any indoor routinely owned or leased or contracted for by an entity and used routinely or regularly for provision of health, day care, education, or library services to children under the age of 18, if the services are funded by Federal programs either directly or through State or local governments, by Federal grant, contract, loan, or loan guarantee. The law does not apply to children's services provided in private residences, facilities funded solely by Medicare or Medicaid funds, and portions of facilities used for inpatient drug or alcohol treatment. Failure to comply with the provisions of the law may result in the imposition of a civil monetary penalty of up to \$1000 per day and/or the imposition of an administrative compliance order on the responsible entity by signing and submitting this application the applicant/grantee certifies that it will comply with the requirements of the Act.

The applicant/grantee further agrees that it will require the language of this certification be included in any subawards which contain provisions for the children's services and that all subgrantees shall certify accordingly.

Signature

Director Michael Traylor

Title

Arizona Department of Economic Security

Organization

APPENDIX C

PRE-EXPENDITURE REPORT FORM

Part A. Expenditures and Provision Method

OMB NO.: 0970-0234

EXPIRATION DATE: 1/31/2021

STATE: Arizona	FISCAL YEAR: SFY 2020	REPORT PERIOD: 7/1/17-6/30/18
Contact Person: Rod Huenemann	Phone Number: 602-542-6159	
Title: SSBG Coordinator	E-Mail Address: rhuenemann@azdhs.gov	
Agency: State of Arizona	Submission Date: May 30, 2019	

Service Supported with SSBG Expenditures	SSBG Expenditures				Expenditures of All Other Federal, State and Local funds**	Total Expenditures	Provision Method		
	SSBG Allocation	Carry Over from Previous FFY	Funds transferred into SSBG*	Carry Over of Funds transferred into SSBG from Previous FFY			Public	Private	
1 Adoption Services	-	-	-	-	-	-			
2 Case Management	8,482,775	-	-	-	235,268,711	243,751,486	X	X	
3 Congregate Meals	3,574	-	-	-	5,255,591	5,259,165	X	X	
4 Counseling Services	-	-	-	-	-	-			
5 Day Care--Adults	259,969	-	-	-	895,917	1,155,886	X	X	
6 Day Care--Children	257,927	-	-	-	85,771,459	86,029,386	X	X	
7 Education and Training Services	-	-	-	-	-	-			
8 Employment Services	82,532	-	-	-	59,933,195	60,015,727	X	X	
9 Family Planning Services	-	-	-	-	-	-			
10 Foster Care Services--Adults	-	-	-	-	-	-			
11 Foster Care Services--Children	5,849,500	-	19,940,731	-	257,874,664	283,664,895	X	X	
12 Health-Related Services	9,061	-	-	-	631,940	641,001		X	
13 Home-Based Services	10,271,766	-	-	-	7,972,610	18,244,376		X	
14 Home-Delivered Meals	1,037,194	-	-	-	7,319,338	8,356,532	X	X	
15 Housing Services	873,935	-	-	-	17,066,837	17,940,772		X	
16 Independent/Transitional Living Services	-	-	-	-	3,174,326	3,174,326	X	X	
17 Information & Referral	88,621	-	-	-	1,491,052	1,579,673	X	X	
18 Legal Services	1,538,710	-	-	-	28,182,534	29,721,244	X	X	
19 Pregnancy & Parenting	11,644	-	-	-	-	11,644			
20 Prevention & Intervention	1,771,766	-	-	-	26,872,639	28,644,405		X	
21 Protective Services--Adults	45,425	-	-	-	8,843,036	8,888,461	X		
22 Protective Services--Children	-	-	-	-	-	-			
23 Recreation Services	-	-	-	-	-	-			
24 Residential Treatment	-	-	-	-	-	-			
25 Special Services--Disabled	842,893	-	-	-	64,001,468	64,844,361	X	X	
26 Special Services--Youth at Risk	46,824	-	-	-	-	46,824			
27 Substance Abuse Services	-	-	-	-	-	-			
28 Transportation	217,269	-	-	-	1,503,314	1,720,583	X	X	
29 Other Services***	860,335	-	-	-	5,985,788	6,846,123	X	X	
30 SUM OF EXPENDITURES FOR SERVICES	32,551,720	-	19,940,731	-	818,044,419	870,536,870			
31 Administrative Costs	1,316,228	-	-	-					
32 SUM OF EXPENDITURES FOR SERVICES AND ADMINISTRATIVE COSTS	33,867,948	-	19,940,731	-					
Remaining funds to be carried into next fiscal year:		0	Amount of funds transferred into SSBG to be carried over into next fiscal year:						0

* From which block grant(s) were these funds transferred? TANF

** Please list the sources of these funds: Federal, State, and Local

*** Please list other services: Community Coordination, Consultation

Part B. Recipients

OMB NO.: 0970-0234

EXPIRATION DATE: 1/31/2021

STATE: Arizona
FISCAL YEAR: SFY 2020

Service Supported with SSBG Expenditures	Children	Adults			Total Adults	Total	Data Collection Method			Duplicated or Unduplicated	
		Adults Age 59 Years & Younger	Adults Age 60 Years & Older	Adults of Unknown Age			Actual Data (A)	Estimated data (E)	Sampled data (S)	Duplicated Count (D)	Unduplicated Count (U)
1 Adoption Services	-	-	-	-	-	-					
2 Case Management	37,970	841	6,453	26,665	33,958	71,928		X			X
3 Congregate Meals	-	2,003	22,512	-	24,515	24,515		X			X
4 Counseling Services	-	-	-	-	-	-					
5 Day Care--Adults	-	26	203	-	228	228		X			X
6 Day Care--Children	50,530	-	-	-	-	50,530		X			X
7 Education and Training Services	-	-	-	-	-	-					
8 Employment Services	15,840	56,845	5	-	56,850	72,690		X			X
9 Family Planning Services	-	-	-	-	-	-					
10 Foster Care Services--Adults	-	-	-	-	-	-					
11 Foster Care Services--Children	30,525	-	-	-	-	30,525		X			X
12 Health-Related Services	-	6	88	-	94	94		X			X
13 Home-Based Services	-	777	7,462	-	8,239	8,239		X			X
14 Home-Delivered Meals	-	672	8,183	-	8,855	8,855		X			X
15 Housing Services	1,080	38	599	10,806	11,442	12,523		X			X
16 Independent/Transitional Living Services	-	-	-	-	-	-		X			X
17 Information & Referral	-	9,047	50,559	-	59,606	59,606		X			X
18 Legal Services	26,924	143	633	3,851	4,628	31,552		X			X
19 Pregnancy & Parenting	-	-	-	-	-	-					
20 Prevention & Intervention	925	37,099	9,854	-	46,953	47,878		X			X
21 Protective Services--Adults	-	2,851	7,280	-	10,131	10,131		X		X	
22 Protective Services--Children	-	-	-	-	-	-					
23 Recreation Services	-	-	-	-	-	-					
24 Residential Treatment	-	-	-	-	-	-					
25 Special Services--Disabled	136	3,702	277	-	3,979	4,116		X			X
26 Special Services--Youth at Risk	-	-	-	-	-	-					
27 Substance Abuse Services	-	-	-	-	-	-					
28 Transportation	-	1,151	16,929	354	18,435	18,435		X			X
29 Other Services***	260,299	82	835	839,403	840,320	1,100,619		X		X	
30 SUM OF RECIPIENTS OF SERVICES	424,231	115,283	131,871	881,078	1,128,233	1,552,464					