



When Risk Matters!

CAPABILITY STATEMENT

Thermal Insulation

Introduction

Eptec is a specialist industrial contractor in Asset Preservation and Rehabilitation. Our expertise is engineered solutions using resin technology to provide concrete rehabilitation, corrosion protection, glass reinforced plastics, waterproofing & linings and thermal insulation.

With offices across Australia, Eptec is positioned to deliver projects in all States and Territories. With a core workforce of over 250 people, Eptec can rapidly mobilise and deploy resources to anywhere in Australia.

The workforce comprises qualified managers and engineers supported by experienced supervisors and permanent employees. One of Eptec's strengths is the use of our own permanent workforce rather than reliance on subcontractors. With skills developed over many years, Eptec guarantees highly responsive, flexible and committed teams ready to undertake projects in even the most remote areas.

Typically Eptec's solutions use the latest resins technology for coatings, cement grouts, epoxy grouts, waterproof membranes, high tech reinforcement such as carbon-fibre and many other innovative and specialised products. Eptec does not manufacture products and can call on the expertise and knowledge bank of all the major worldwide suppliers to assist in providing engineered solutions. We will often participate with manufacturers in the development and application of new products, always with a vision for improving industry techniques and safety and environmental awareness.

Our specialised services are applicable across a broad spectrum of industries including Defence, Water & Wastewater, Infrastructure and Energy & Resources.

Thermal Insulation

- Marine insulation
- Hot and cold applications
- Cryogenic applications
- LNG and LPG plants
- Petrochemical plants
- Power stations

The application of insulation for piping, ducting and tanks is part of Eptec's capabilities and also through joint venture agreements with international specialists in supply and installation.

Eptec has developed the expertise to complete projects for all standards of hot cold and cryogenic application.

Eptec offers the resources of worldwide thermal insulation industry leaders combined with an intimate knowledge of the local working environment. Combining local management with the skill of worldwide specialists provides Australian Industry with a reliable and effective team with the ability to complete large and small projects under many varied conditions.

Industries serviced include marine, petrochemical, power generation defence and process industries amongst others.

Our Key Services to Thermal Insulation

Over many years, Eptec has carried out insulation activities on various Naval and Commercial vessels and industrial insulation around Australia including the insulation of 10 new construction Anzac Frigates for the Royal Australian and Royal New Zealand Navies, 4 new construction Inshore Patrol Vessels and 2 new construction Offshore Patrol Vessels for the Royal New Zealand Navy.

During this period we have also completed various projects involving supply and application of insulation/cladding for industrial purposes.

Eptec's involvement in the insulation/cladding industry is well recognized throughout Australia. Our core expertise in insulation includes but is not limited to the following:

Types of structural type insulation installed:

- Polyamide panels insulation.
- Mineral wool panels insulation.
- Polyester blanket
- Navy Board panels insulation.
- Foil faced and un-faced sheeting blanket.

Types of structural type insulation installed:

- Polyamide panels insulation.
- Mineral wool panels insulation.
- Polyester blanket.
- Navy Board panels insulation.
- Foil faced and un-faced sheeting blanket.



Types of HVAC ducting insulation installed:

- Rockwool blanket or moulded section faced and un-faced.
- Mineral wool blankets faced or un-faced



Types of pipe insulation and lagging installed:

- Armourflex formed and flat sheet, faced and un-faced.
- Mineral wool formed and flat sheet, faced and un-faced.
- Rockwool formed and flat sheet, faced and un-faced.



Technical and Management experience in Thermal Insulation

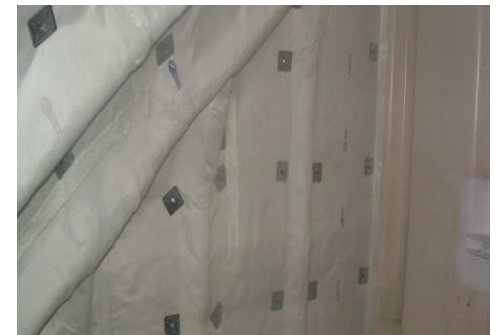
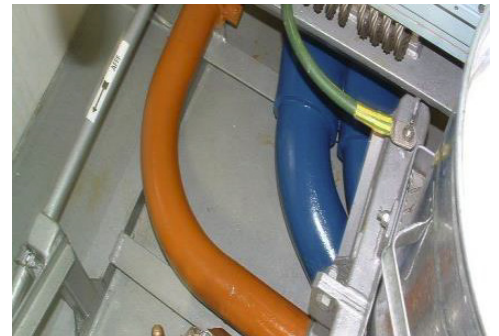
EPTEC's Management and Staff are particularly well trained and experienced and are uniquely positioned in Australia for the installation of all types of insulation EPTEC can offer the optimum thermal insulation to meet quality, time and budget expectations throughout Australasia.

Supervision

To ensure that all quality and programme objectives are met at every phase of the works EPTEC recognises the need for full-time supervision and planning.

EPTEC's Supervisors are experienced personnel with the capacity to manage large thermal insulation contracts on all site including remote locations.

EPTEC's Team has over 30 years' experience in thermal insulation, with "hands-on" knowledge of the working requirements.



Significant Projects

HMAS Warramunga

Location : Williamstown, VIC

Client : Tenix / BAE Australia

Scope of Works : Application of insulation/cladding for all compartments during block fabrication, consolidation and afloat.



HMAS Ballarat

Location : Williamstown, VIC

Client : Tenix / BAE Australia

Scope of Works : Application of insulation/cladding for all compartments during block fabrication, consolidation and afloat.



HMAS Perth

Location : Williamstown, VIC

Client : Tenix / BAE Australia

Scope of Works : Application of insulation/cladding for all compartments during block fabrication, consolidation and afloat.



HMAS Paramatta

Location : Williamstown, VIC

Client : Tenix / BAE Australia

Scope of Works : Application of insulation/cladding for all compartments during block fabrication, consolidation and afloat.



HMAS Arunta

Location : Williamstown, VIC

Client : Tenix / BAE Australia

Scope of Works : Application of insulation/
cladding for all compartments during block
fabrication, consolidation and afloat.



HMAS Toowoomba

Location : Williamstown, VIC

Client : Tenix / BAE Australia

Scope of Works : Application of insulation/
cladding for all compartments during block
fabrication, consolidation and afloat.

HMAS Stuart

Location : Williamstown, VIC

Client : Tenix / BAE Australia

Scope of Works : Application of insulation/
cladding for all compartments during block
fabrication, consolidation and afloat.



TMNZA Te Mana & Te Kaha

Location : Williamstown, VIC

Client : Tenix / BAE Australia

Scope of Works : Application of insulation/
cladding for all compartments during block
fabrication, consolidation and afloat.

Project Protector Wellington for NZ Navy

Location : Williamstown, VIC

Client : Tenix / BAE Australia

Scope of Works : Application of insulation/
cladding for all compartments during block
fabrication, consolidation and afloat.



Contact Details

Head Office

A: 463-467 Harris St,
Ultimo, NSW 2007
T: (02) 9034 6969
F: (02) 9034 6970
E: eptec@eptec.com.au

Eptec Workshop Facility

A: 40-41 Pavesi St,
Guildford, NSW 2161
T: (02) 9681 6499
F: (02) 9681 7659
E: eptec@eptec.com.au

Eptec Western Australia

A: 51 Dooley St,
Navel Base, WA 6165
T: (08) 9410 2010
F: (08) 9410 2021
E: eptecwa@eptec.com.au