

STATEMENT OF QUALIFICATIONS



We're here for you

UNITED CONSULTING

Corporate Overview

United Consulting is a multidiscipline engineering consulting firm based in Norcross, Georgia, specializing in geotechnical engineering, environmental services, geophysical services, inspections, and construction materials testing since 1990. With over 100 employees, including more than 20 professionally registered engineers, geologists, and surveyors, the firm has undertaken some of the most challenging projects in the Southeast.

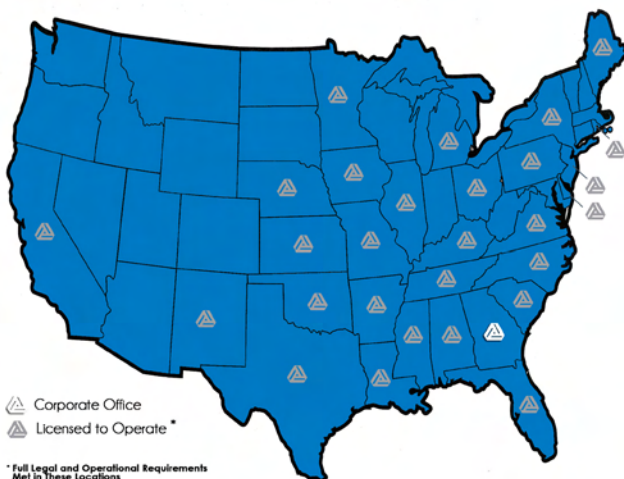
At United Consulting, we provide more than distinct engineering and environmental services. We approach each assignment with the philosophy that the client's needs and concerns are the reasons we are in business.

Staffing

The management and field staff are knowledgeable, highly skilled and motivated to provide the best service to our clients. We continuously invest in our staff by providing mandatory training classes, seminars and continuing education to assure that everyone is informed of the latest methods and state-of-the-art equipment in their specialty.

Multiple Office Locations

United Consulting is licensed and registered in 29 states and continues to grow.



Clients and Services

We are highly respected in the industry and our client base has rapidly expanded to include major government, corporate, and private entities.

The company currently provides the following services:

- Geotechnical Engineering
- Environmental Services
- Geophysical Services
- Inspection Services
- Construction Materials Testing

Titles and Names of Officers

- Reza Abree, P.E. – Chief Executive Officer
- Chris L. Roberds, P.G. – Senior Executive Vice President (Secretary)
- Scott D. Smelter – Senior Executive Vice President (Treasurer)



We're here for you

UNITED CONSULTING

625 Holcomb Bridge Road • Norcross, GA 30071 • 770-209-0029 • www.unitedconsulting.com



Bringing Solutions to your Project

Geotechnical Services

Subsurface Soil Investigations
 Geologic Investigations
 Hydrogeologic Assessments
 Foundation Investigations
 Rock Stability Analysis
 Rock Anchor/Bolt Design
 Dam Investigations/Design
 Dam Breach Analysis
 Pile/Caisson/Foundation Load
 Test/Design/Analysis/Construction
 Monitoring
 Slope Stability Analysis
 Tunnel Design
 Soil Nailing Design
 Value Engineering
 Failure Investigations
 Pavement Evaluation/Design
 Bridge Foundation Investigations
 Retaining Wall Foundation
 Investigations
 MSE Wall Design
 Air-Track or Hydraulic Drilling Moni-
 toring Prior to Blasting
 Pressuremeter/Dilatometer/
 Diezocone Testing
 Various Instrumentation Monitoring

Environmental Services

Phase I - Site Assessments
 Phase II - Contamination Assessments
 Brownfields Assessment
 Brownfields Remediation
 Corrective Action Plans
 Asbestos, Lead-Based Paint, & Mold
 Consulting Services
 Underground Storage Tanks
 Indoor / Outdoor Air Quality
 Assessment & Analysis
 Industrial Hygiene Services
 Groundwater / Surface Water
 Modeling & Analysis
 Pumping Tests
 Landfill Services
 Health & Safety Services
 Plume Dispersion Modeling
 Title V and 112(r)
 Emission Control Systems
 NPDES (National Pollution Discharge
 Elimination System)

Subsurface Utility Engineering

Quality Levels A, B, C, D
 Ground Penetrating Radar
 SUE Surveying / Surface Geophysics

Geophysical Services

Geologic Mapping
 Pre- and Post- Construction
 Surveys
 Seismic Refraction Surveys &
 Reflection Surveys
 Vibration Monitoring
 Earth Resistivity
 Geophysical Instrumentation
 Downhole Surveys
 Review of Blasting Programs
 Earthquake Risk Assessment
 Shear Wave Analysis

Inspection Services

Property Condition Survey
 Replacement & Reserve Analysis
 Repair Cost Estimates
 Visual Documentation
 Plan & Spec Review
 Construction Draw Inspections
 Contract Administration
 Pre-acquisition Survey
 Construction Monitoring
 Alternatives Evaluation
 Roof System Inspection

Materials Testing

Complete Mortar & Masonry Testing
 In-place Density Testing
 Foundation Testing
 Asphalt/Concrete Testing & Batch
 Plant Inspections
 Magnetic Particle, Ultrasonic, &
 Radiographic Testing
 Special Inspections
 Failure Investigations
 Monitoring Post-Tension Operations
 Floor Flatness and Levelness
 Determinations (Dipstick)
 Moisture Testing
 Fire Proofing Testing
 - Portland Based Cement
 - Gypsum Based Cementitious
 Spray
 - Cellulose Insulation

Ecological Services

Streambank Remediation
 Wetlands Services
 Permitting Planning
 Mitigation Planning
 Wildlife Management
 NEPA
 Section 106

The United Consulting staff has years of problem solving experience which gives us a solid foundation of both experience and judgment for your site. Whether it is avoiding cost overruns, claims, failures, or safety concerns, our experience will be invaluable. A list of our geotechnical services follow.

Foundation Investigations

Evaluation of the underground for all types of foundations for structures in the built environment.

Deep Foundations

- Drilled Piers (Caissons)
- Piling
 - Augured Cast-In-Place
 - Driven
 - Wood
 - Steel
 - Precast Prestressed
- Quality Control Requirements
- Load Tests
- Monitoring Installation
- Construction Specifications
- Ground Anchors
- Tiebacks
- Helical Anchors

Roads and Bridges

- Foundation Investigations
- Slope Stability
- Soil Stabilization
- Earth Pressure (Retaining Walls)
- Seismic Refraction Analysis
- Quality Control
- Laboratory Testing
- Quality Assurance Testing
- Load Tests
- Pavement Evaluation and Design

Slope Stability

- Analysis of Steep Slopes in Residual Soils and Fill Embankments
- Geosynthetic Reinforcement
- Analytical Programs
 - PCStabl5
 - XStable
 - MRSSlope
 - Laboratory Testing
- Triaxial Shear Tests
- Angle of Internal Friction
- Hydraulic Conductivity
- Reports of Findings and Recommendations

Soil Stabilization

- Geosynthetics / Geotextiles
- Reinforcement of Weak Soils
- Lateral Containment
- Embankment Reinforcement
- Diminish Creep in Soil Slopes
- Improve Bearing Capacity of Shallow Foundations
- French Drains
- Soil Nailing
 - In-place Soil Reinforcement Technique
 - Design
 - Construction Plans and Specifications
 - Inspection Control Requirements
 - Lime Addition
- Portland Cement Addition
- Surge Stone with Crusher Run Addition
- Matting
- Settlement Plates and Monitoring
- Grouting



We're here for you

UNITED CONSULTING

625 Holcomb Bridge Road • Norcross, GA 30071 • 770-209-0029 • www.unitedconsulting.com

Earth Dams

- New Dams
 - Geotechnical Evaluations
 - Field Exploration
 - Laboratory Testing
 - Engineering Analysis
 - Instrumentation
 - Reports of Findings and Recommendations
- Environmental Considerations
 - Wetlands
 - Endangered Species
 - Sensitive Habitats
 - Water Resources
- Construction Testing/ Monitoring
 - Key Construction, Seepage Controls
 - Internal Drains
 - Earthwork
 - Instrumentation
- Inspection of Existing Dams
 - Comprehensive Inspections – 5 years
 - Intermediate Inspections – 3 years
 - Annual Inspections
 - Condition Surveys
 - Dam Break Analysis

Tunneling

For the contractor to construct the work successfully, he needs full disclosure of the rock or soil through which a tunnel is excavated.

- Geotechnical Evaluations
 - Geologic Setting
 - Identification of Utilities
 - Exploratory Test Borings/ Soil and Rock
 - Hydraulic Conductivity Tests
 - Laboratory Testing
 - Stability Analysis
 - Settlement Analysis
 - Pressuremeter Tests - Soil strength and modulus of deformation estimates

- Geotechnical Reports
 - Discussion of Encountered Conditions
 - Soft Ground
 - Mixed Face
 - Rock Face
 - Dewatering, Groundwater Control
 - Discussion of Tunneling Methods
 - Estimates of “Stand Up” Time
 - Surface Effects
 - Provide Specific Rock or Soil Design Parameters
 - Define the Limits of Certainty for the Project

Geosynthetic Reinforced Retaining Walls

- Geotechnical Evaluations of Soil Characteristics
 - Shear Strength
 - Cohesion
 - Angle of Internal Friction
 - Earth Pressure
- Stability Analysis
- Global
 - Sliding
 - Overturning
 - Bearing Capacity
 - Reinforcement Length, Layout
- Analytical Programs
 - National Concrete Masonry Association – S R Walls
 - Xstable
- Construction Documents
- Construction Quality Control
 - Laboratory Tests
 - Compaction Testing
 - Quality Assurance Testing



We're here for you

UNITED CONSULTING

625 Holcomb Bridge Road • Norcross, GA 30071 • 770-209-0029 • www.unitedconsulting.com

Dewatering Systems

- Investigation Methods
 - Borings
 - Grain Size Distribution (Sieve Analysis)
 - Test Pits
- Hydraulic Conductivity Tests
- Pump Tests
- Ditches and Trenches
- French Drains
- Sumps

Soil Mechanics Laboratory

- Fully equipped laboratory for Geotechnical Testing
- Consolidometers with Computerized Data Capture and Plotting
- Triaxial Shear Tests with Automatic Load Application and Computerized Data Capture and Plotting
- Hydraulic Conductivity (Permeability)
 - Constant and Falling Head
- Atterberg Limits Tests
- Swell Tests (Expansive Soils)
- Grain Size Distribution (Sieve Analysis)



United Consulting is very knowledgeable of environmental rules and regulations governing site development. This knowledge includes a full range of the Southeastern US regulatory programs. We have extensive experience in wetland and stream bank delineation, mitigation and permitting. We note that United Consulting has an excellent relationship with the U.S. Army Corps of Engineers (USCOE) and we are included in the "Select List of Environmental Consultants".

Phase I Environmental Assessments

- From 0.5 to 2000 acres
- Over 4000 completed
- EPA and ASTM or client specialized protocol

Phase II Environmental Assessments

- Soil, Groundwater, and Surface Water Sampling, Testing, and Analysis
- Buried Drum and Tank Detection and Location via Geophysical tools
- Contamination Determination
- Groundwater Monitoring Well Installation
- Independent Chemical Laboratory Testing
- Over 800 Completed

Brownfield Program

- HSI Notification
- BFP Application
- CAP Preparation
- CAP Performance
- CSR Preparation and EPD Interaction
- RQSM Calculations
- RRS Calculations
- Extent Calculations - Site Investigations
- Remedial Estimates
- Remediation Monitoring
- Groundwater/Surface Water Model and Analysis

Underground Storage Tank (UST) Closures

- Sampling and Testing
- Closure Reports

- Corrective Action Plans
- Risk Assessments
- Remediation

Remediation Services

- Design & Permitting
- Bench Tests
- Chemical Oxidation
- Biological Treatment
- Vacuum Extraction
- Excavation

Asbestos Services

- Surveys
- Specifications
- Work Plans

Lead-based Paint (LBP) Services

- Initial Surveys
- TCLP Testing



Ecological Services

- Wetland Delineations
- Wetland & Streambank Permitting
- Wetland & Streambank Mitigation Planning
- Stream Buffer Variance Applications
- Wetland & Streambank Mitigation Monitoring
- Endangered Species Surveys
- Sediment Surveys
- NEPA Environmental Assessments
- GEPA Environmental Assessments



Landfill Services

- Site Acceptability
- Hydrogeologic Assessments
- Methane Monitoring Plans
- Groundwater Monitoring Systems



Industrial Hygiene Services

- Mold and Indoor Air Quality
- Baseline and On-going Industrial Hygiene Surveys
- Health and Safety Program Development
- Health and Safety Training



Geophysical Services

United Consulting has six professional geologists on staff with experience in problem solving and judgment concerning rock evaluation and other geological conditions. Services include sinkhole investigations, micro-tunneling operations, and seismic refraction surveys to depths of 100 feet. Our full range of geophysical services include:

- Subsurface Utility Engineering (SUE)
- Earth Resistivity and Electromagnetic Surveys
- Geological Mapping and Reconnaissance

Geophysical Instrumentation

- Inclinometers (Vertical and Horizontal)
- Piezometers
- Settlement Cells, Load Cells and Pressure Cells
- Soil Strainmeters
- Borehole Extensometers
- Strain Gauges
- Low Strain Integrity Testing

Ground Penetrating Radar

- Underground Storage Tank (UST) Location
- Identification of Utilities
- Geologic Investigations
- Environmental Evaluations
- Structural and Forensic Investigations
- Archeological Studies
- Antennas Ranges from 100 MHz to 1000 MHz

Rock Stability Analysis

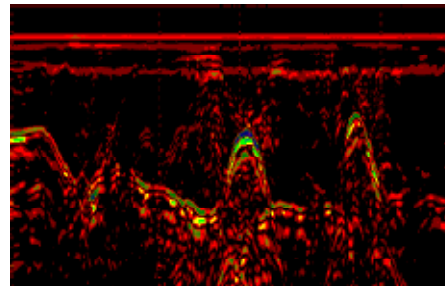
- Open Cut
- Tunneling and Micro Tunneling
- Rock Anchors

Probabilistic Seismic Hazard Analysis

- Seismic Coefficients; A_a and A_v
- "S" Factor
- Performance Category Rating
- Soil Liquefaction Potential
- Site Shear Wave Velocity Values
- Seismic Refraction Surveys /24 and 12 Channel Seismograph Studies
- Design and Review of Blasting Programs

Vibration Monitoring

- Pile Driving
- Blasting
- Heavy Construction
- Pre and Post Construction Structural Surveys
- Third Party Damage Claims Analysis



We're here for you

UNITED CONSULTING

625 Holcomb Bridge Road • Norcross, GA 30071 • 770-209-0029 • www.unitedconsulting.com

Subsurface Utility Engineering

Subsurface Utility Engineering (SUE) is a nondestructive method of detecting underground infrastructure. It includes designating the horizontal and vertical location of the utilities, land surveying, locating, data reduction, and presentation of the information utilizing CaiCE software and Microstation. SUE can be Level B, designate technology, or Level A, vacuum excavation (potholing).

With more than 10 years experience in the field of subsurface investigations, United Consulting is well trained and supports three state-of-the-art techniques for subsurface investigations.

Radio Detection
RD



Ground Penetrating Radar
GPR



Subsurface Utility Engineering

Background

A branch of engineering practice that involves managing certain risks associated with utility mapping at appropriate quality levels, utility coordination, utility relocation design and coordination, utility condition assessment, communication of utility data to concerned parties, utility relocation cost estimates, implementation of utility accommodation policies and utility design. Cost savings on typical projects using quality level A and B may range from 10% to 15% (compared with costs from a project using level C and D data). Each ascending level described below typically includes the subordinate level(s).

Services

United Consulting performs all Levels of SUE Services. Our services include Quality Level designate as defined by ASCE Standard CI/ASCE 38-02.

Quality Level D

Information derived from existing records and oral recollection.

Quality Level C

Information obtained by surveying and plotting visible above-ground utility features and by using professional judgment in correlating this information to quality level D information.

Quality Level B

Information obtained through the application of appropriate surface geophysical methods to determine the existence and approximate horizontal position of subsurface utilities. Quality level B information should be reproducible by surface geophysics at any point of their depiction. This information is surveyed to applicable tolerances defined by the project and reduced into documents. United Consulting typically employs a level of accuracy for Quality Level B of approximately 12 inches on both the horizontal and vertical axis.

Quality Level A

Precise horizontal and vertical location of utilities obtained by the actual exposure (or verification of previously exposed and surveyed utilities) and subsequent measurement of subsurface utilities, usually at a specific point. Minimally intrusive excavation equipment is typically used to minimize the potential for utility damage. A precise horizontal and vertical location, as well as other utility attributes, is shown on plan documents. Accuracy is typically set to 0.5 inches vertical and to applicable horizontal survey and mapping accuracy as defined or expected by the project owner.

Surface geophysical techniques such as Ground Penetrating Radar (GPR), electromagnetic, magnetic or other energy fields. Electromagnetic methods include the following: pipe and cable locators (inductive, conductive, active, and passive modes), terrain conductivity, ground penetrating radar, ground resistivity techniques, optical methods, and computer-driven algorithms coupled with data collection techniques. This method usually provides adequate, acceptable utility location data are utilized.

Ground Penetrating Radar



Background

United Consulting has in-house capabilities to perform subsurface studies using the ground penetrating radar technique. We utilize a GSSI SIR-3000 system and the latest software technology to locate metallic and nonmetallic underground objects. Our site studies provide accurate focal depths, location and geometry of buried objects.

Applicability

Using traditional methods for mapping and detecting subsurface features can be time consuming and costly. The ground penetrating radar technique is quick, easy, accurate and cost effective. Information, which was formerly difficult to obtain, can now be acquired rapidly through this non-destructive technique.

Procedures

United Consulting performs the ground penetrating radar survey using state-of-the-art GSSI SIR-3000 system and software support.

During each study, data can be displayed in real-time or a color display stored on an internal hard drive or can be printed on a thermal plotter for the spot answers. A variety of different antennas operating on varying frequencies are utilized to perform investigations ranging in depth from 6 inches to 120 feet. United Consulting's ground penetrating radar services provide subsurface profiling and location for:

- Buried drums, trenches and pipes
- Boundaries of abandoned landfills
- Detection of bedrock, buried boulders and soil profiles
- Detection of water tables
- Location of rebars, conduits and voids in concrete
- Maps contamination plumes
- Detection of voids in dams
- Sedimentation studies
- Profiles: tower and building
- Renovations
- Foundations
- Examination of damaged foundations



Background

Using surface geophysical techniques such as the Radio Detection (RD) method enables our engineers to locate underground infrastructures and collect data without disturbing the surroundings. This method usually provides adequate, acceptable utility location data. However, if problems are encountered during the Level B investigation a Level A, vacuum exploration can be performed.

Applicability

A Level A investigation involves locating the precise horizontal and vertical positions of utilities by excavating a test hole to expose the utility. A vacuum excavation method is then employed to minimize the possibility of damage to a utility line.

Experience

United Consulting has a Level B SUE investigation on I-75 for the Georgia Department of Transportation. Our investigation consisted of two phases. Each phase involves underground and overhead utility location and identification associated with the widening I-75 around the Eagles Landing area. The SUE data will be included into the GIS database and represented on the construction drawings.

Materials Testing Services

Our clients are confident of United Consulting's high standards and excellence in Construction Materials Testing because of our highly and uniquely qualified staff and our participation in and certification by nationally recognized organizations.

United Consulting's Laboratory has been certified by several organizations such as the U.S. Army Corps of Engineers, AASHTO accredited Cement and Concrete Reference Laboratory, the Concrete Advisory Board of Georgia, and the Georgia Department of Transportation. Our personnel has met the stringent certification requirements of the American Concrete Institute (ACI) and the National Institute of Certified Engineering Technicians (NICET), thus assuring our clients of total excellence. We provide the following areas of materials Testing:

Soil

- Preparation of Specifications or Review
- Complete Laboratory Testing
- In-place Density Testing
- Foundation Monitoring and Testing
- Failure Investigations
- Testing During Placement

Concrete

- Preparation of Specifications or Review
- Complete Laboratory Testing
- Batch Plant Inspections
- Mix Design and Mix Design Verifications
- Complete Mortar and Masonry Testing
- Testing During Placement
- Non-Destructive Testing of In-situ Concrete
- Failure Investigations • Monitoring Post-tensioning Operations
- Floor-Flatness and Levelness Determination

Asphalt

- Preparation of Specifications or Review
- Complete Laboratory Testing
- Foundation Monitoring and Testing
- Batch Plant Inspections
- Mix Design and Mix Design Verifications
- Failure Investigations
- Non-Destructive Testing
- Testing During Placement

Steel

- Preparation of Specifications or Review
- Magnetic Particle, Ultrasonic, and Radiographic Testing
- Non-destructive Testing
- Failure Investigation



We're here for you

UNITED CONSULTING

625 Holcomb Bridge Road • Norcross, GA 30071 • 770-209-0029 • www.unitedconsulting.com

Special Inspections

In 2000, the State of Georgia adopted the International Building Code (IBC). The IBC mandates that Special Inspections be performed during the construction of structures designed using IBC Standard Codes. United Consulting is very familiar with the IBC and Special Inspections. United Consulting is an approved agency as defined in Section 1703, and through American Council of Engineering Companies of Georgia (ACEC/GA). United Consulting also helped in the development of the Georgia Amendments to the Code. We have one of the largest staff of ICC Certified Inspectors in the State of Georgia.

United Consulting has provided Special Inspection Services for hundreds of projects. A partial list includes:

- The Realm
- East Atlanta Library
- Several buildings at DeKalb Medical Center
- Georgia State University Student Housing
- Industrial Metals
- Westchester at Peachtree Valley
- FCA Pre-Cast Facility
- Dawson County Jail
- Dart Container
- Vinings Mountain Condominiums
- American Red Cross



The Realm



Georgia State University
Student Housing



2828 Peachtree
Condominiums



Northwinds



Our clients often require existing property site inspections to be prepared by an engineering firm as a condition of financing or re-financing a property. These inspections are a preliminary review to identify problems and general costs. United Consulting has the experience and capability to perform these inspections. Our Inspection Services include:

Inspection Services

- Reviewing available relevant drawings, specifications and records for the property.
- Interviewing property managers and/or maintenance personnel.
- Inspecting property to visually survey the following areas:
 - Site Work
 - Pavements
 - Structure and Foundation
 - Exterior Walls and Windows
 - Roofing
 - Interiors
 - Mechanical
 - Plumbing
 - Electrical
 - Fire Protection
- Infrared surveys of electrical/mechanical equipment and roofing system.
- ADA compliance reviews.
- Preparing cost estimates for recommended repairs.
- Preparing replacement reserve analysis for major components which require replacement over a five-year period.
- Preparing written reports including project information, results of observations, photographs, recommended repairs and the need for further investigations. Also included will be appropriate photographs, cost estimates and reserve analysis.

Construction Loan Services

In addition to existing property services, United Consulting offers construction loan services to banks and other lending institutions. These services are tailored to the lenders requirements and can include:

- Review of drawings, specifications and technical reports to verify adequacy.
- Review of preparation of construction cost estimates and construction schedule to verify project can be completed within established budget and time constraints. Our database includes cost and schedule information on various types of projects for comparative projects.
- Review of construction contracts.
- Review of performance and payment bonds.
- Construction funding supervision including project inspections. Observation to include quality of work, percent completed, conformance with plans and specifications, deviations from original budget and schedule, and recommendations regarding monthly contractor draw request.
- Our reports typically include an "S Curve" which indicates actual process versus planned progress. This provides our clients a graphic management tool to quickly assess the project progress.
- Review of change orders for impact on the project cost and schedule.
- Review of project closeout documents including as-built drawings, warranties, and maintenance manuals.

Partial List of Clients

Ambling Companies
Amli Realty
ARCADIS U.S., Inc.
Archer Western
AT&T
Atlanta Public Schools
AutoZone
Bank of America
Beazer Homes
Burns McDonnell
Camp Dresser & McKee
Carter Burgess
CH₂M Hill
Chick-fil-A
Childress Klein Properties
Clough, Harbour & Associates
CVS Pharmacy
Duke Realty
Education Realty Trust
Faison
Family Dollar

Finger Company
Fulton County Board of Education
Georgia Power
Georgia State University
Georgia Institute of Technology
Gresham Smith and Partners
Gwinnett County Public Schools
Hardin Construction
Hatch Mott MacDonald (J.B. Trimble)
Heath & Lineback Engineers, Inc.
Hendon Properties
Highwoods Anderson
HNTB
John Portman & Associates
Jordan, Jones & Goulding
Julian LeCraw Co.
Kroger Company
Lincoln Properties
McDonald Development
MEAG Power
Mohawk Industries
O'Brien & Gere

Oxford Properties
Parsons
Parsons Brinkerhoff (PB America's Inc.)
Pope and Land Enterprises, Inc.
Post Buckley, Schuh & Jernigan
Post Properties
Publix Supermarkets
Ruby-Collins
Rosser International
Salvation Army
Skanska
Southern Companies
Southern Civil Engineering
Texaco Corporation
The Focus Group
The LPA Group
Trammel Crow Residential
Transwestern Commercial Services
Turner Associates Architects & Planners
WalMart
Wachovia Bank
Waffle House, Inc.

Local Government

City of Atlanta
City of Peachtree City
Cobb County
Cobb County Water System
Gwinnett DOT
Cobb County DOT
Georgia DOT
City of College Park
DeKalb County
Forsyth County

Fulton County
Georgia DOT
Gwinnett County
Hall County
Rockdale County
City of Duluth
City of Roswell
City of Conyers
City of Sandy Springs
Dawson County

City of Smyrna
City of Marietta
City of Conyers
City of Norcross
City of Decatur
Department of Natural Resources
Clayton County
Barrow County
Evermore CID
Gwinnett Village

Federal Government

US Army Corps of Engineers
Veterans Administration
Federal Aviation Administration

Federal Bureau of Prisons
Federal Reserve Bank
U.S. Postal Service

Naval Facilities Engineering Command





Outreach

United Consulting is committed to supporting our community and those causes that are personal to our employees through monetary contributions, gratis services, and employee volunteers. United Consulting has been fortunate enough to be able to lend a helping hand to organizations for many years, both locally and internationally.

King Papers, The Community Foundation for Greater Atlanta, Inc.

Habitat for Humanity - Gwinnett

American Diabetes Association

100 Black Men of America - Atlanta Chapter

Georgia Tech Foundation

American Red Cross

The Atlanta Two-Day Walk for Breast Cancer

The Dream House for Medically Fragile Children

The Tree House Gang - DeKalb Medical Center

Atlanta Food Bank - Atlanta, Georgia

U.S. Marine Corps Reserve Toys for Tots Program

Save the Children

The Salvation Army Angel Tree

Atlanta Union Mission

Hosea's Feed the Hungry & Homeless

Atlanta Commission on Women

Cookies for our Troops - Girl Scouts of America

Friends of DeKalb

Habitat for Humanity

Hope for Children

Cystic Fibrosis Foundation

Lance Armstrong Foundation

Special Olympics of Georgia

Greening Youth Foundation

ACEC of Georgia

Children's Healthcare of Atlanta

American Cancer Society - Susan B. Komen

Heifer International

Boy Scouts of America

