



Warning Order

Hole Park Invasion Kent 28th - 30th May 2016

Introduction

Invasion Kent is an international Napoleonic living history event sponsored by The Napoleonic Association of Great Britain to which all Napoleonic units are invited to attend. The event is staged at Hole Park, Rolvenden, Kent by invitation of Mr Edward Barham our host.

Allied and French living history camps will be established to accommodate Napoleonic units from across Europe. The camps will consist of up to 200 period canvas tents of various sizes and descriptions, each in keeping with its role of 200 years ago. Modern camp site and horse paddocks will be established in the immediate vicinity West of the Allied camp.

Units should arrive from 1200 hrs on Saturday 28th May. Those units who need to arrive earlier should contact Tony Wilks the event officer. The Camps are to be established by 0900hrs Sun 29th May in all respects, from which time all participants should conduct themselves in a manner suited to the role that they are portraying. Roles will include Officers and Soldiers of the Infantry, Artillery and Cavalry regiments of Wellington and Napoleon's armies as well as the camp followers consisting of Officers and Soldiers wives and children. The camp will be fully authentic to the year 1812 with all participants living as they would have in that era.

Period traders have been invited to attend the event and will establish an independent sutlers village on the main sight.

The event will stage a skirmish each morning and a battle in the afternoon of each day in support of the scenario which asks the question what if Napoleon had invaded (see the French Campaign Plans at end of Warning Order). So for those French units who have been waiting for 200 years now's your chance. An officer's event coordination meeting will be held at 0900 each day at which a full days brief will be given. All Unit Commanders or their representatives should attend.

The event will open to the public at 1000 each day for a programme of displays until 1700 on Sunday 29th May and 1630 on Monday 30th May. All participants should be clear of the site by 1900 Monday 30th May. Those who need to stay longer should contact Tony Wilks.

| | | |
|-----------------|----------|---|
| Timings: | Saturday | Event team to arrive by 1000 1200 set up camp (participants can arrive any time) |
| | Sunday | 0700 Reveille 0800 Breakfast 0900 Flag Up (vehicles off site) Camp duties |



Warning Order

Officer's meeting. (British Commanders HQ)

0930 Powder Issue

1000 NCO's Parades (public on site)

1015 Officers Parades and inspection

1030 Armies conduct drill and training exercises.

1130 Armies to form up in camp arenas

12.00 Skirmish in Main Arena

1230 13.30 Lunch

1400 14.30 Cavalry Skill arms - Main Arena

1500 Army to form up in camps

1515 Battle in Main Arena

1600 Children's Recruiting and Drill

1700 Flag Down.

Monday

0700 Reveille

0800 Breakfast.

0900 Flag up.

Camp duties.

Officers meeting (French Commanders HQ).

0930 Powder issue.

0945 NCO's Parades.

1000 Officers Parades and inspection (public on site)

1030 Armies conduct drill and training exercises.

1130 Armies to form up in camp arenas

12.00 Skirmish in Main Arena

12.30 13.30 Lunch

1400 -1430 Cavalry Skill arms Main Arena

15.00 Army to form up in camps

1515 Battle in Main Arena.

16.00 Children's Recruiting and Drill.

1630 Flag Down.

Break Camp. (Clear of site by 1900)

Scenario

Just over 200 years ago Europe was in the grips of the French dictator Napoleon Bonaparte. Only England and Portugal stood against him. All over England Lord Wellingtons Regiments recruited and trained with desperate urgency to reinforce our much stretched army in the Peninsular who were fighting for the very freedoms we enjoy today.

Sir Edwin Parkers Brigade is enjoying the Hospitality of Hole Park while they make their preparations and bring the units back to strength recruiting from the local population and training in the grounds of Hole Park. The regiments of Infantry, Cavalry and Artillery at Hole Park will form the Vanguard of the Armies relief force in Spain.

While Sir Edwin and his officers entertain the local gentry and their ladies, his NCOs are sending out recruiting parties to enlist the local volunteers to take the 'Kings Shilling'. Once



Warning Order

the shilling is taken the men are passed to the care of the training team where they will learn their basic soldering skills of foot and arms drill. They will be tested to highest standards of the Kings Army and once pronounced fit for service will assume a role in the Infantry Companies or the Cavalry and Artillery Troops that are destined for in the Peninsular. As with all military units there are many other tasks to be performed in the day to day life of a soldier such as camp duties, guards etc.

Sir Edwin's Brigade has been alerted that a strong Force of French has been reported to have landed on the coast at Winchelsea Beach and is encamped in that area. Bands of French soldiers have been moving in land to try and locate Sir Edwin's Brigade and destroy it, to prevent them from reinforcing Lord Wellington in the peninsular. It is strongly rumoured that the Emperor Napoleon was landed in the early hours of Saturday morning to take personal charge of the operation because it is so vital to his war efforts in Spain.

French patrols have been raiding small homesteads and pillaging whatever they can get their hands on across the coastal countryside getting ever closer to Hole Park as they look for the British Brigade. Sir Edwin has assured his host that his Brigade will provide protection to his lordships lands and interests. Therefore the army is liable to be called to arms at a moment's notice, so pleas report any strange goings on or villainous looking characters in the area to the officers at Hole Park.

In order to provide the visiting public with as compressive a picture as possible a section of the French Camp north of Winchelsea will be set in the grounds at Hole Park.

Living History Camps

Camps should be run in accordance with our normal high standards of authenticity. Remember, that whenever you are in the living history camp or within the display areas or anywhere on site when the public are around, make sure you are correctly attired and that any modern items are out of sight. Remember if you buy refreshments from the café transfer them to authentic style containers

Entertainment

A singer will provide entertainment in the Food and Bar area on Sunday evening, all are encouraged to attend.

Park Gardens

The Hole Park gardens and facilities are open to all participants during public hours. The area north of the main estate road is out of bounds during non public hours each day.

Noise

It is not anticipated that there will be any restrictions on noise during the public day. There is however a restriction on noise at night with no loud singing etc. after 11 pm and then quiet throughout the camps after midnight please.



Warning Order

Logistics

Event Staff

An event logistics control point (LCP) will be established at the Northern end of the Allied camp within 3 Brigade lines. A radio base station will be located at the control point from which event staff can be contacted. Please contact a member of the Events Team in the event that any logistics issues need to be resolved.

Event Officer - Tony Wilks 07771 728667

Site Officer - Jim Paylor 07713 184035

Event Safety Officer - Adrian Lobb

Powder Officers - Tony Wilks 07771 728667

- Jerry Speering 07966 371596

NA Executive Officer - Martin Monks

First Aid

The First Aid point will be located at the event logistics control point. During skirmishes and Battles the first aid point will move to the Allied Artillery emplacement. All participants must make sure that they bring any medications that they require for the weekend with them.

Serious medical emergencies should use the 999 service. The nearest Accident & Emergency hospital is located at Kennington Rd, Willesborough, Ashford, Kent
TN24 0LZ

Safety

Safety is the responsibility of all personnel present at the event. Everyone has a duty of diligence to ensure that neither participants nor public are placed at risk. An event Risk assessment is attached to this warning order. Units should ensure that all personnel attending the event have read and understand the risks presented and the precautions to be taken to minimise risk. Particular note should be taken of the deep water hazards presented on the site map and precautions taken accordingly.

Emergency Procedures

In the event of an emergency that requires that the camps be cleared the order will be given by word of mouth. Please proceed directly to the nearest Emergency Assembly Area where Unit Commanders should account for all of their personnel and report to the member of the Event Team controlling that area that everyone is accounted for. Emergency Assembly area 1 is at the Western side of the Main Battlefield Arena for both authentic camps and traders. Emergency Assembly area 2 is East of the NA Parking for personnel in the parking area, Modern Camp and Cavalry Paddocks. Please do not return to camps until a member of the event team has given the all clear.



Warning Order

Licensing and Powder

All licensing issues should be addressed to Tony Wilks who holds the Site Powder Licence. Any units bring powder to the site must store it in the site powder store. Unused powder should be returned to the logistics control point in suitable containers, at the end of each day for storage in the site powder store. Powder can only be issued to licensed personnel for use in displays. There is to be no discharge of any weapons outside of the designated display activities without prior permission from the Events Team.

Vehicle Movement and Parking

Vehicles should only enter and leave camps using the routes designated on the site map which is included below. Once on site (through the main gates) there is an event speed limit of 10 MPH throughout the estate. There is to be no vehicle movement during public hours without permission from event staff. Once unloaded please move vehicles to the designated event (NA) parking area. Please do not park in the Public parking area as this may incur parking charges.

Toilets

Portable toilets will be located adjacent to both camps. In addition the site has fixed toilets that are available during public hours only.

Water

Water Points have been located adjacent to all camp areas. The water is clean and can be drunk without treatment. Please ensure that taps are switched off after use and that the water points are kept clean and hygienic.

Firewood, Cooking Fires and Fire Precautions.

Firewood will be located in central dumps adjacent to camps. Your attention is drawn to the Fire precautions identified in the Risk Assessment. All tents should have a water filled fire bucket placed to the rear. Cooking fires should all have a fire extinguisher concealed close to hand. Fire pits are permitted throughout all camps. Turf should be carefully removed, stored and then returned to the restored fire pit at the end of the event. Any unused firewood should be returned to the dumps from which it was taken.

Rubbish Disposal

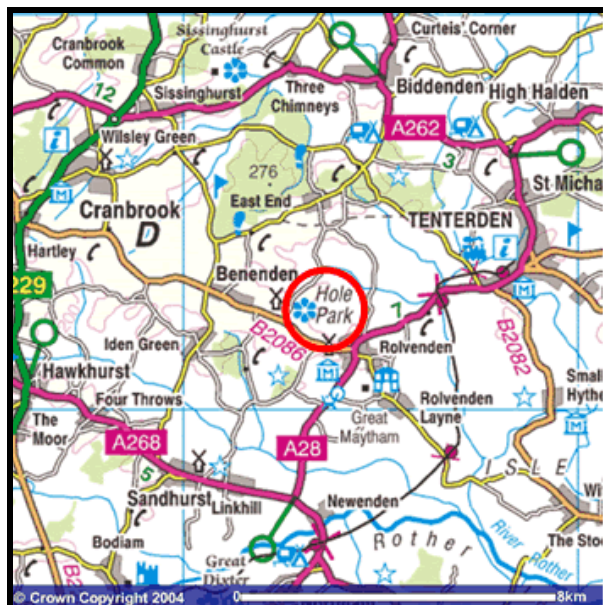
Please ensure that all rubbish is bagged and placed in the rubbish disposal areas. Please do not leave it in camp area at the end of the event.

Directions

From the M20 - Exit the M20 at Junction 9 onto the A28. Follow the A28 (Pot Kiln Lane and High Halden Road) to Tenterden Road A262 in Biddenden. Take Benenden Road to Green Lane in Benenden. Take Stepneyford Lane to Hole Park.



Warning Order



Major Supermarkets

There are many shops in the area however the three major supermarkets are:

ASDA - Kimberley Way, Ashford, TN24 0SE - 17.1 miles

Opening Times - Thur - 24 hours, Fri 24 hours, Sat Closes at 10 pm, Sun 10 - 4, Mon 10 - 4

TESCO - Woodsgate Corner, Pembury, Tunbridge Wells, Kent TN2 4NE - 14.17 miles

Opening Times - Thur 6 - Midnight, Fri 6 - Midnight, Sat 6 - Midnight Sun 10 - 4 Mon 9 - 6

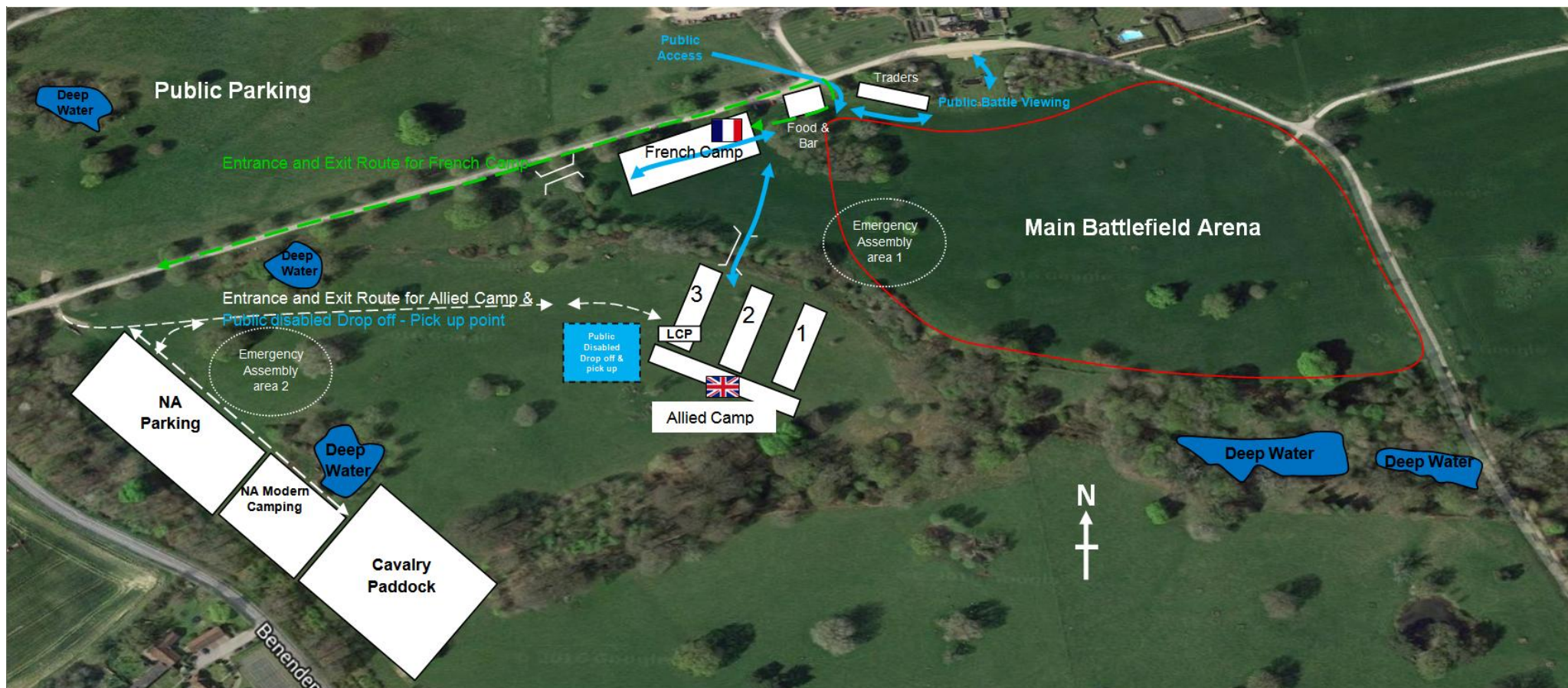
Sainsbury - Simone Weil Ave, Ashford TN24 8YN - 9.4 miles

Opening Times - Thur 6 - 11, Fri 6 - 11, Sat 6 - 10, Sun 10 - 4, Mon Closed.



Warning Order

Site Map



Warning Order

French Campaign Plans

