

# Barnes Construction News

## Welcome from the Site team

Welcome to Barnes Construction's January newsletter from the Christ's College Boat House scheme. These regular publications are aimed at keeping you updated with progress on site.

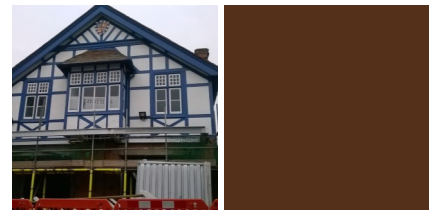
Barnes Construction have been appointed main contractor to remodel the existing boat house with demolition of old boat store and erection of a new two storey extension. The building is a single two storey unit with pitched tile roof elements, internally the layout is divided into two areas; ground floor is predominantly laid out for boat storage with the first floor constructed to facilitate new gymnasium, offices, breakout space and new changing facilities. Externally a new metal walk way will provide a platform to the east and south elevations and a great view over the river Cam. The new boat house is targeted to open in the Autumn of 2017.

The new scheme will provide modern, fit for purpose facilities delivering against current day standards. As part of this, the project has been designed to be highly energy efficient using the latest in integrated sustainable energy systems, helping to cut down on carbon omissions and saving on energy usage.

## Upcoming Works

The reinforced concrete foundations and floor continue as previously reported. Again the work is being carried out in small sections including underpinning works of the existing structure, this is to maintain support for safe working, whilst ensuring structural integrity.

Plumbing, Heating and Ventilation designs continue with the major elements agreed and elements like the colour of fittings being chosen.



## Who are we?

Barnes Construction operates throughout the country and this project is being managed and delivered out of the Ipswich Head Office.

To find out more information about Barnes Construction, please visit our website:

[www.barnesconstruction.co.uk](http://www.barnesconstruction.co.uk)

## How to contact us

Our nominated contact is  
**Lindsey Aves**

Tel: 07584517012

Lindsey can be contacted during normal working hours.

## Write to us

Alternatively, you can write to us at our office:

Barnes Construction  
6 Bermuda Road  
Ransomes Europark  
Ipswich  
Suffolk IP3 9RU

## Working Hours

Our normal working hours are:

07:00 to 17:30 Monday to Friday

08:00 to 13:00 Saturdays

Sundays & Bank Holidays are non-working

## Car Parking

All staff and operatives will be parking in local car parks due to minimal compound area.





**David Faichney**  
Senior Contracts Manager

Office based.  
Overall project management.



**Mark Hart**  
Construction Director

Office based.  
Overall successful project delivery.



**Matthew Ramplin**  
Project Manager

Site/Office based.  
Overall responsibility of construction team on site.



**Lindsey Aves**  
Site Manager

Site based.  
Manages site activities and safety.

## Considerate Constructors Scheme

The site has been registered with the Cambridge Considerate Constructors Scheme, which is an independently audited assessment of a project's consideration for the local community, its operatives and the environment.



As part of our commitment, we will do what we can to minimise disruption from the project. If you have any concerns, please do not hesitate in contacting us. Simply post your comments through the post box fitted to the main entrance hoarding or we can arrange a visit for you in our site offices.

## What you might see and hear

The works to the existing building continues with the erection of a sectional steel support frame. During the period this will be completed and the surrounding walls and roof coverings will commence, thus enclosing the existing area. Scaffolding will continue to be erected, altered and maintained during the works to ensure safe access for the operatives.

Regular visits and inspections from the architects, engineers and building inspectors continue along with Considerate Constructors surveys and reports.

## Deliveries and site traffic

We will ensure that all deliveries to site are properly planned and coordinated to minimise disruption. Procurement schedules and delivery programmes will be prepared to ensure, as far as possible, that materials are delivered in a just-in-time manner.



**Tony Garnham**  
Surveying Manager

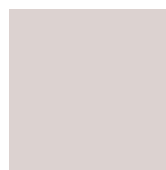
Office based.  
Responsible for managing cost.



**Thank you for taking the time to read this newsletter**

Regards

Lindsey



January 2017