



# COMPANY PROFILE

STUP Consultants Pvt. Ltd.

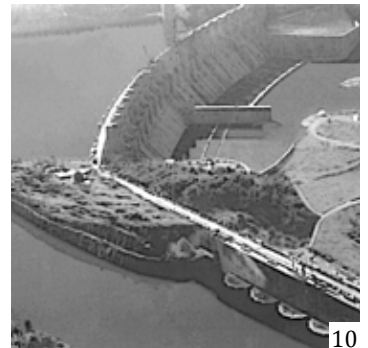
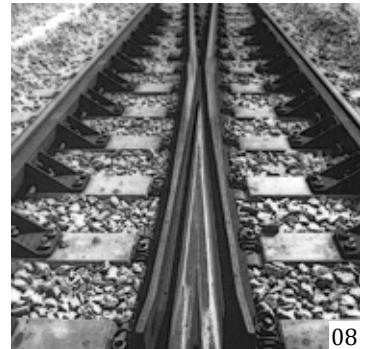




# COMPANY PROFILE

## SECTORS

- 01** Airports & Aviation  
Air India Boeing 747 Hangar, Santacruz
- 02** Urban, Rural and Industrial Development  
including all Types of Buildings  
Building for Esa Salem Al Gurg, Abu Dhabi, UAE
- 03** Energy, Telecommunication and Space  
Infrastructure  
Cooling Tower, Gandhinagar
- 04** Environmental and Public Health  
Engineering  
450 MLD Water Treatment Plant, Delhi
- 05** Roads, Highways, Expressways  
Ai-Ain Expressway, Haza Al Maqam, Al Ain, U.A.E
- 06** Bridges & Flyovers  
Yamuna Bridge at Kalpi, Uttar Pradesh
- 07** Metros  
Madipur Metro Station, Delhi Metro, Delhi
- 08** Railways  
Electrified Double Track Railway Project, Malaysia
- 09** Offshore, Harbour and Coastal Engineering  
4th Offshore Oil Berth at Butcher Island
- 10** Water Resources and Agricultural  
Development  
Indira Sagar Dam, Madhya Pradesh
- 11** Construction Engineering, Project  
Management and Technology Transfer  
Wheel and Axle Plant, Bangalore
- 12** Rehabilitation of Structures and Heritage  
Buildings  
Bridge across River Sharavati on NH17, Honnavar, Karnataka





Assembly Hall, Gandhinagar

# Introduction

STUP is a full service project delivery consultancy company offering integrated planning, architecture, engineering and project management services for buildings, power, transportation, telecommunications, commercial, institutional, recreational and manufacturing facility infrastructure, and is an international firm with over 1200 professionals in more than 20 offices and global project locations.

STUP, a French acronym for "Societe Technique pour l'Utilisation de la Precontrainte" meaning "technical corporation for the utilization of prestressed concrete" was established in Paris in 1944 to spread knowledge of prestressed concrete and other inventions of Mr. Eugene Freyssinet (the renowned French engineer).

STUP, France's first global offices were established by Mr. Yves Guyon who gave prestressed concrete its theoretical basis and transferred technology by setting up engineering consultancy groups in the Americas, Africa, Asia and the Middle East to attract and train local professionals thereby creating centers of excellence.

STUP Consultants Pvt. Ltd. ("STUP") was established in India in 1963. STUP has served over 10,000 clients in 37 countries on projects of tremendous diversity such as Road Master Plans in Bangladesh, Water Supply in Laos, Highways in Kuwait, Sports Facilities in UAE, Offshore Facilities and Hospitals in Oman, Nuclear Reactors, Airports, and Power Plants in India, the Presidential Palace Complex in Ghana, etc.

STUP's wide range of resources and expertise offer comprehensive and single umbrella solutions (incorporating building design, infrastructure engineering, mechanical, electrical and HVAC services) to technically challenging projects and services from planning to construction, for local and national governments, international financing institutions, private sector owners, contractors and public sector institutions.

STUP has also a Strategic Business Alliance with M/s. STUP Design Forum, an Architecture Firm of repute, who are Architects, Planners and Interior Designers from 2003, apart from having several Registered Architects under their wings.

STUP also provides optimized and innovative state of the art designs utilizing specialized expertise developed over 5 decades for the design and rehabilitation of buildings and major structures, which are locally adapted for economic constructability.

STUP places utmost value on its clients and offers them error free and lower cost designs with tight turnaround times by leveraging the resource base, cost structure and time zones of its Asian operations globally.



## Offices and Project Locations

STUP has offices/ served clients in: Afghanistan, Algeria, America, Bahrain, Bangladesh, Bhutan, Brunei, Cambodia, Cyprus, France, Gambia, Ghana, India, Indonesia, Iran, Iraq, Jordan, Kuwait, Laos, Libya, Malaysia, Maldives, Marshall Islands, Mauritius, Micronesia, Nepal, Oman, Papua New Guinea ,Philippines, Qatar , Russia, Sri Lanka, Tanzania, Uganda, U.A.E., Vietnam, Yemen.





## Airports & Aviation

- Master Planning
- Airside Infrastructure
- Landside Infrastructure
- Runway Infrastructure & Taxiway
- Terminal Buildings
- ATC Tower
- Aircraft Manufacturing & Maintenance Unit
- Hangers & Maintenance Factory
- Maintenance Block



## Urban, Rural and Industrial Development including all Types of Buildings

- Master Planning & Urban Design
- Airports & Transportation
- Corporate Headquarters & Commercial Complex
- High-tech Parks (IT, Bio-tech, Pharmaceutical, Apparels)
- Hospitality : Hotels & Resorts
- Universities & Institutes
- Industrial
- Residential & Mixed Use
- Healthcare & Hospitals
- SEZ and Integrated Townships
- Leisure & Sports
- Entertainment, Convention Centers & Retail
- Signature Public Buildings
- Interior





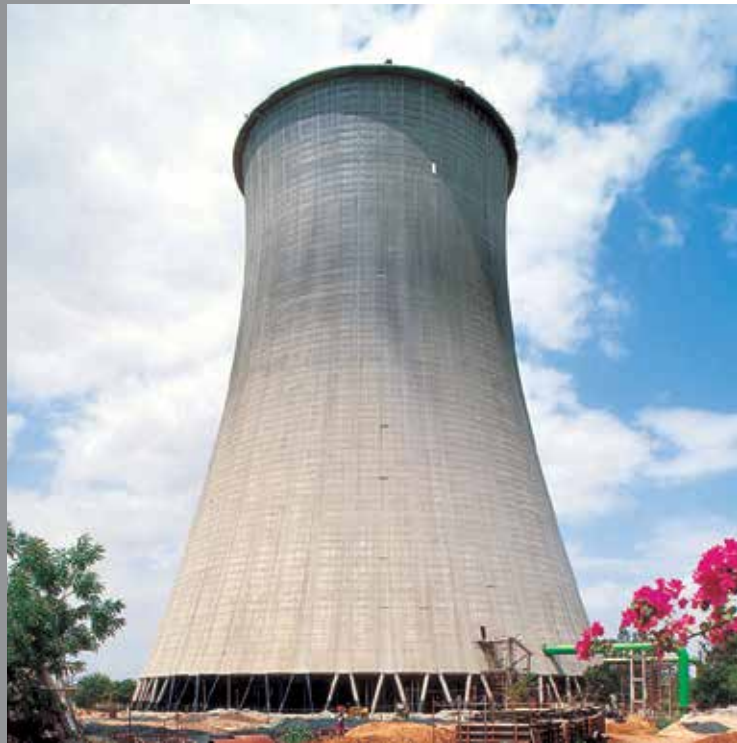
ATC Tower, Hyderabad International Airport



World's Tallest Natural Draught Cooling Tower - 202 M at Kalisindh Thermal Power Station

## Energy, Telecommunications and Space Infrastructure

- Containment for nuclear reactor buildings
- Thermal & Hydro-electric power projects
- Thermal & structural design of Natural Draught Cooling Towers
- Thermal & Structural design of induced Draught cooling Towers
- Functional & Structural design of tall chimneys
- Cryogenic tanks for storage of LNG
- Special structure like tall pylons for supporting boilers etc.
- Any other Structural and Civil Engineering for Energy related projects



## Environmental and Public Health Engineering

- Water resources studies including design of systems
- Process design of water treatment and desalinization
- Collection, treatment and disposal of sewage, industrial effluent and solid waste
- Major/ minor irrigation projects and structures for hydel projects
- Specialized techniques for reservoir construction
- Environmental Consultancy services





## Roads, Highways, Expressways

- Socio-techno-economic feasibility and traffic studies
- Prioritization and Master plans
- Road Design, Strengthening, Widening and Expansion
- Urban and rural roads
- Expressways and Elevated Roads
- Flyovers and interchange systems
- Road bridges
- Road maintenance and bridge rehabilitation



## Bridges & Flyovers

- Cable Stayed Bridges
- Extra-dosed Bridges
- Segmental - Precast (Box) / Insitu (Box)
- Centilever construction / Balanced Centilever
- Suspension Bridges
- Steel Bridges-Torough Type / Composite Bridge Under slung
- Arch Bridges
- Interchanges / Flyovers /T-Beam - Insitu / Precast T-Beam
- Rail Cum Road Bridges
- Under pass-Box Pushing / Tunnelling
- Incremental Launching / Nose Launching





Princess Street Flyover, Mumbai



Qutub Minar Elevated Station, Delhi Metro

## Metros

- Elevated Viaduct
- Elevated Station
- Underground Station
- Cut & Cover Tunnel
- Underground Crossovers



## Railways

- Trackwork
- Underpass, Railway Crossing Structures, Railway Station Building, Railway Plants and other Infrastructure
- Railway Bridges
- Dedicated Freight Corridor





## Offshore, Harbour and Coastal Engineering

- Socio-techno-economic feasibility and Ports and harbours
- Mooring and berthing structures
- Jetties and break waters
- Shiplifts, slipways and dry docks
- Offshore yards
- Intake and outfall structures
- Cargo handling
- LPG / LNG / POL / Dry bulk / Crude oil terminals
- Navigation aids
- Rehabilitation of marine structures



## Water Resources and Agricultural Development

- Major and Minor Irrigation projects & Command Area Development
- Aqueducts, syphons, canals and canal regulatory works
- Intake structures, tunnels, surge shafts, penstocks and power houses
- Lift Irrigation Schemes
- Water distribution systems
- Water supply master plan
- Water resources consolidation
- Flood control
- Evaluation of the safety of dams
- Engineering of Barrages, Major Dams and Irrigation tanks
- Modernisation of canals





Bhima Aqueduct, Maharashtra



Railway Bridge over Vasai Creek, Maharashtra

# Construction Engineering, Project Management and Technology Transfer

- Airport Projects
- Urban Infrastructure
- Building Design & Integrated Engineering
- Energy, telecommunication and space infrastructure projects
- Environmental and public health engineering projects
- Major Structures (Bridges & Flyovers)
- Highways (Roads, Highways & Expressways) / IE Engineering
- Lender's Engineer
- Metros & Railways
- Marine projects
- Rehabilitation projects
- Water resources projects



## Rehabilitation of Structures and Heritage Buildings

- Inspection and surveys
- Tests (destructive and non destructive)
- Rehabilitation studies
- Restoration studies
- Rehabilitation schemes
- Restoration schemes
- Residual life estimation



# Services Provided

STUP provides a comprehensive range of services to governments, private sector owners and to contractors and concessionaires bidding and executing design/build projects:

## Studies and Planning

- Environmental impact assessment
- Socio-economic and feasibility
- Pre-investment feasibility
- Master planning
- Interior design planning
- Landscape Architecture

## Design and Construction Engineering

- Assessment of institutional requirements
- Integrated and Holistic, Architectural Engineering, (AE) Building Design Services
- Preliminary designs and cost estimates
- Engineering design, bill of quantities and cost estimates
- Technical specifications and tender documents
- Tender evaluation
- Contract negotiation
- Specialized construction equipment Design

## Surveys and Investigations

- Topographical survey and mapping
- Transport survey
- Collection of hydrological / hydrographic / geographical data
- Soil and material surveys
- Geotechnical investigation
- Analysis / interpretation of seismological data / models

## Project Management

- Financial advice to owners and concessionaires
- Construction programming, supervision and monitoring
- Contract management
- Material procurement
- QA / QC plans
- O and M Manuals
- Project planning & scheduling
- Cost Control
- Time management
- Risk management and replace material procurement with material management.

# Representative List of Clients

STUP has been retained by civic bodies / municipalities, government agencies, public and private sector undertakings, individual owners and engineering contractors. In addition, consultancy services have been provided to several projects financed by clients such as:

## Funding Agencies

- Asian Development Bank (ADB)
- African Development Bank (AfDB)
- World Bank (WB)
- Japan Bank of International Cooperation (JBIC)
- International Bank of Reconstruction and Development (IBRD)
- United Nations Development Programme (UNDP)
- World Health Organization (WHO)
- Department for International Development, UK (DFID)
- Kuwait Fund for Arab Economic Development (KFAED)

## Government Bodies

- Govt. of United States
- Govt. of Marshall Island
- Sultanate of Oman
- Govt. of Laos PDR
- Govt. of Vietnam
- Govt. of Brunei
- Govt. of Iraq
- Govt. of U. A. E.
- Govt. of India
- Govt. of Ghana
- Govt. of Qatar
- Govt. of Malaysia
- Govt. of Indonesia
- Govt. of Bhutan
- Govt. of Kuwait
- Govt. of Algeria
- Govt. of Bangladesh

## Contractors & Developers

- Afcons Infrastructure Limited
- Innovative Technical Solutions Inc. (ITSI)
- Bechtel
- Degremont
- Alsthom
- Dumez
- Galfar
- Ideal Road Builders
- Gammon India Limited
- Larsen & Toubro Limited
- Consolidated Contractors Company (CCC)
- Six Construct
- Emaar
- Hindustan Construction Company (HCC)
- Sadbhav Engineering Ltd.
- Essel Infrastructures Group
- Simplex Infrastructures Ltd.

## Corporations

- Aeroport de Paris Ingenieurs
- Cognizant Software
- Safege
- Marriot Hotels
- Reliance
- Kuwait Airways Corporation
- Hyatt Hotels & Resorts
- Birla Brothers
- Indian Oil Corporation
- Sterlite
- Oil and Natural Gas Company Limited
- Nuclear Power Corporation of India
- Ministry of Roads Transport and Highways
- National Highways Authority of India (NHAI)
- Central Public Works Department (CPWD)
- Ghaziabad Development Authority (GDA)
- Thane Municipal Corporation
- Municipal Corporation of Greater Mumbai (MCGM)
- Mumbai Metropolitan Region Development Authority (MMRDA)





P. V. Narasimha Rao Elevated Corridor, Hyderabad

## OFFICES

### Registered Office:

STUP Consultants Pvt. Ltd.  
1004 & 5, Raheja Chambers, 213, Nariman Point,  
Mumbai-400 021. India  
Tel.: 022-40868686 / 22835061 / 22832334  
Fax: 022-22048424  
E-mail: mumbai@stupmail.com

### AMERICA

STUP Consultants L.L.C.  
3934 Community Avenue  
LA. Crescenta, CA 91214  
E-mail: darshanav.c@gmail.com

### FRANCE

Gelexco  
Chez Arcadis, 9 Avenue Reaumur,  
92350 Le Plessis-Robinson Paris  
France  
Tel.: +331-46012461 / 46012463  
Fax: +331-46012462  
E-mail: gelexco@wanadoo.fr

### OMAN

Asie Etudes Engineering Consultancy L.L.C.  
P. B. No. 1599, Code No. 112, Ruwi,  
Sultanate of Oman  
Tel.: 00968-24798500 / 24798167 / 24793277  
Fax: 00968-24704907  
E-mail: etudes@omantel.net.om



**STUP Consultants Pvt. Ltd.**

1004 - 5, Raheja Chambers, 213, Nariman Point, Mumbai -  
400021. India. Tel: +91 22 40868686 Fax : +91 22048424  
email: mumbai @stupmail.com web:www.stupco.com