

Living Our Faith
BUILDING
OUR
FUTURE
CAPITAL CAMPAIGN



Proposed Church Renovation

CHURCH OF THE PRESENTATION

CAMPAIGN PRAYER

Loving God,

Creator and Bestower of all gifts,
You have called us to be partners with
you to proclaim the gospel and serve all.

Assist us as our parish community begins
our project to build and enhance our sacred space
to provide greater impact on the way
we serve, worship, and reach out to others.

Fill us with the desire, ability,
and resolve to complete this effort with
understanding, patience, and good will.

Let us continually be aware of Your Presence,
be faithful to our prayer life and stewardship
as we travel this journey as a faith community,
where all are welcomed, nourished, and blessed to
be Christ for each other.

Please bless our endeavors and
anchor our listening to the Holy Spirit.

We call on Mary, Mother of Jesus,
for guidance, gentleness and strength.

We ask all this in Jesus' Name.

Amen.



Dear Parish Family,

Church of the Presentation is a vibrant, growing and welcoming community with a rich array of opportunities to love and serve God.

We have grown exponentially over our 55 years, from a small country parish of 270 families to over 4,000 families that call us their church home. I am blessed to serve in a parish that continues to attract people of all ages. Parishioners come from over 100 zip codes. In contrast, our physical plant has lagged behind in meeting the needs of our growing community.

21st Century Faith Life In A 20th Century Environment

Our growth has forced us into what is essentially two separate worship spaces. The auditorium, once intended to serve as overflow space, has become a part of our permanent worship area. We are one assembly of worshippers and we should all have a good vantage point to fully participate in our communal liturgy.

Additionally, our campus can no longer accommodate the needs of our growing faith formation programs, nor the needs of our 70 ministries and numerous social events.

Building Our Future

In looking to meet these challenges we conducted a Feasibility Study a few months ago to gauge support for this campaign. The good news is that over 700 families responded, with 82% supporting these improvements. With everyone's support, we are confident that we will be able to *Build Our Future* together.

The Crossroad

Our parish has been given much from those who have come before us. Now it is our time to address our space limitations to meet our present needs and to benefit future generations. This is our opportunity to return the gifts the Lord has given to each of us.

Please take some time to look over the project details and outline of the Capital Campaign. I ask you to prayerfully consider your participation as we approach this crossroad in the life of our parish. If you want to discuss any aspect of the Capital Campaign or the renovation and building plans, please feel free to contact me or any member of our staff.

Together, let us continue to *Live Our Faith and Build Our Future*.

Blessings,



Fr. Bob



uplifting
healing
caring
dynamic
inspirational



Living Our Faith

We are a welcoming Catholic community leading people into a growing relationship with Jesus Christ through Word, Worship, and Outreach.

We Worship Together

Our worship is a powerful and integral part of our community because we are committed to Jesus' call to "do this in memory of Me."

Each of our Sunday Masses has a distinctive feel: the quiet of the early morning Mass, to the energy of the weekly family worship and monthly children's choir from the stirring voices of our 70-member choir to the energetic youth-oriented Mass with a contemporary ensemble.

We also participate in a broad range of spiritual experiences throughout the year, including:

- Retreats – Men's and Women's Cornerstone and Journey, Couples Weekend, Antioch, Freshman/Sophomore and more
- Centering Prayer, Labyrinth Walks, Eucharistic Adoration
- Wednesday morning men's group; Thursday morning women's group
- Prayer Tree Ministry, Small Christian Communities and much, much more

Parish Life

We have dozens of community building events throughout the year to gather with old friends and meet new members of our parish family, including: Parish Picnic, Trunk or Treat, Volunteer Appreciation Party, Tailgate Party, Welcoming Dinner, Family Movie Night, St. Nick's Breakfast, St. Patrick's Dance, Women's Christmas Tea, Men's Beefsteak Dinner, Pasta Cabaret, and much, much more.



Spiritual *welcoming* *family-oriented* *inspirational*

Passing On Our Faith

From pre-school through high school, our Family Faith Formation programs have continued to grow as hundreds of new families join our parish each year.

- Play 'n Worship serves over 100 3-5 year olds during Sunday 10am Mass.
- A 24/7 interactive, digital platform is designed to pass on our faith to over 700 grammar school children.
- Over 250 7th & 8th graders attend our Junior High program.
- Youth Ministry is a popular program for 9th-12th graders where nearly 400 teens participate in a large variety of programs.

Serving the Needs of Others

- 250 members of the Soup Kitchen Ministry feed nearly 1,000 people each month.
- Our Food Pantry feeds all who come to our doors with food insecurity.
- 80 families received wish list Christmas gifts from our Adopt-a-Family program.
- Our Community Garden harvested 850 lbs. of vegetables last year for people who cannot afford fresh food.
- We built a permanent clinic in Haiti, and employ a permanent staff that provides medical care throughout the year.
- We work with Family Promise, the only organization working with homeless families in Bergen County to help them return to self-sufficiency.
- Our Justice & Peace Ministry addresses social justice issues, encourages people to respond in Christian action.

*"Compassion,
sharing, Eucharist:
This is the path
Jesus indicates for
us in the Gospel. It
is a path that leads
us to face the needs
of this world with
brotherhood."
~ Pope Francis*



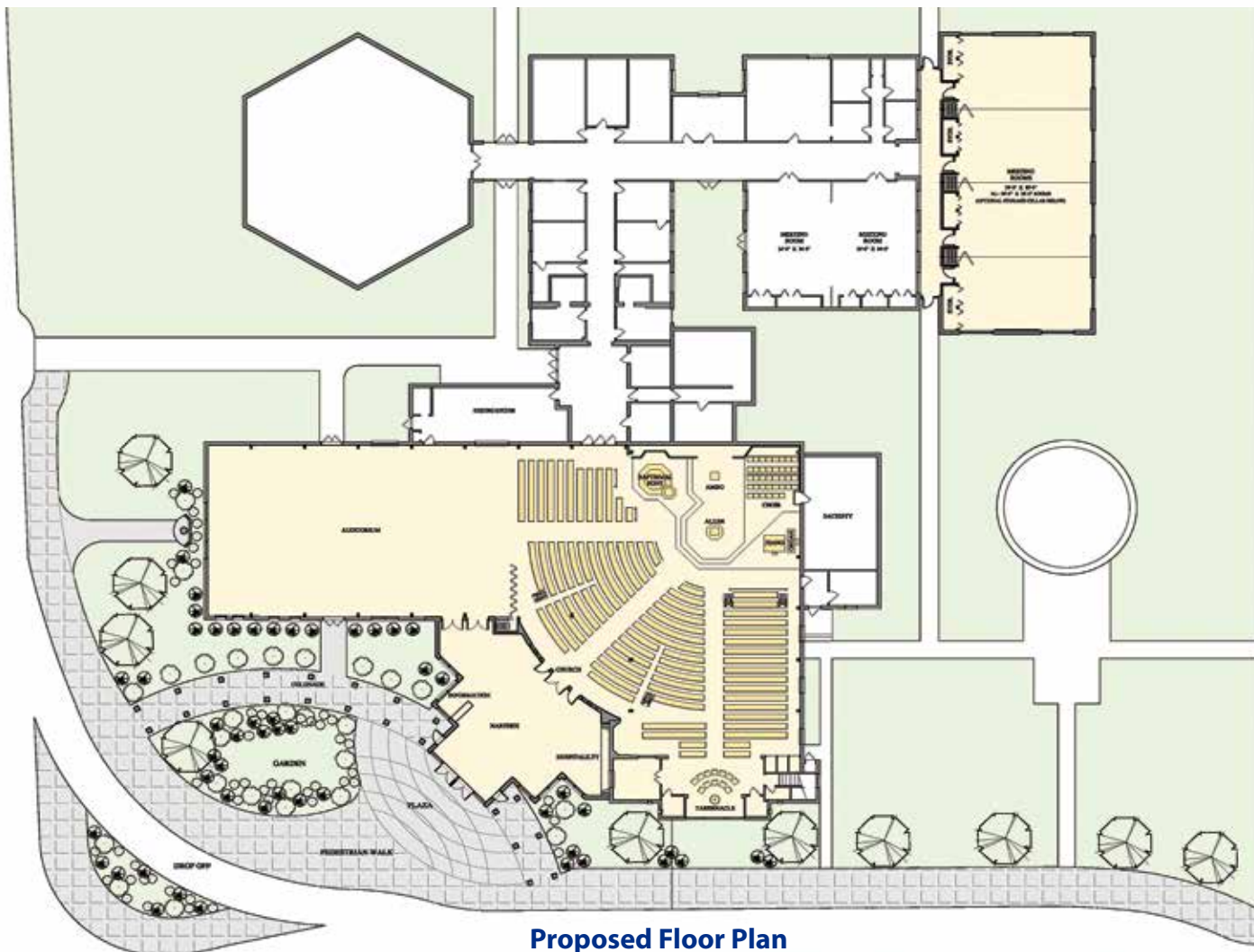
Building Our Future

Our Challenge

Presentation is a growing and dynamic community with an abundance of opportunities to live our faith and fulfill our parish mission. This year alone, over 200 new families have joined our parish and we continue to develop new ministries.

While this is good news, it has created challenges with our worship and meeting space:

- **Where we pray together.** Our auditorium, once only used as “overflow,” is now a permanent part of our worship space. This means two separate and disconnected areas where we celebrate the Sacraments.
- **Where we meet together.** Our meeting and gathering spaces cannot accommodate our 70+ ministries, and our faith formation programs. Many groups need to meet off-site.
- **Living our mission.** While our parish is known as welcoming, our physical space conflicts with this message. Our gathering and welcoming space is fragmented, disjointed and spread out throughout the parish center. At this moment, we have an opportunity to change that while also addressing other essential, and long overdue, building needs.
- **A look ahead.** As we move forward into the next 50 years of our parish life, we look to ensure that our spiritual home remains vibrant and thriving for the next generation. This includes the physical plant where we gather, meet, pray and serve others.



Proposed Floor Plan

Where We Pray Together

We are one assembly of worshippers who are fortunate to have reverent and beautiful liturgical experiences. We should all have a good vantage point to fully participate in our communal liturgy. Unfortunately, many don't. We've developed a plan to modify our current worship space to create "one church" without the need to build a new one.

This plan seeks to make maximum use of infrastructure in place while creating a worship space that reflects our parish mission, dedication to welcoming others and commitment to future generations.

Where We Meet Together

As we grow in our educational offerings to all age groups, our spiritual nurturing opportunities and our numerous social activities, we have been faced with an impossible challenge: meeting all the space needs for the vibrant life of our parish, especially during high traffic periods.

To help meet the space needs of our dynamic ministries, we have developed an efficient solution with a modest footprint and tremendous flexibility.

Plans for Our Worship Space

- **Integrated worship space.** We can build out a semi-circle between the auditorium and the church building to create one church with an inviting welcoming area.
- **Unobstructed view, more pews.** Everyone will finally have an appropriately clear sight line to the altar, our most important focal point. We will add 200 more seats in pews (as opposed to folding chairs).
- **A welcoming, prominent face to the community.** The new façade, visible from the road, will feature a covered walkway and a major entry that is handicapped accessible.
- **More sacred space.** We will have a meditative area for Eucharistic devotions, small group prayer and a comfortable place for parents with young children.

Plans for Our Meeting Space

- **New, flexible meeting rooms.** This rectangular space easily subdivides into modest sized meeting rooms, one large gathering area or any combination in between.
- **Minimal disturbance of existing meeting space.** This new structure will simply connect to our existing meeting structures, minimizing interruption of parish life.
- **Much-needed storage.** As we construct this meeting space, we will explore any and all opportunities to add storage space.



Building Our Future

"A Church that is truly living according to the Gospel cannot but have the form of a welcoming home, with the doors always open."

~ Pope Francis

Why Now?

As a parish community, we have discussed, researched and prayed regarding our future. What are our most pressing needs, in the near term and down the road? How will this help us fulfill our mission of living the Gospel? Several additional key points have emerged:

- **First addition to our parish plant in 27 years.** Our parish has grown exponentially in its mission and membership but our physical space lags behind.
- **We are debt-free.** We are grateful that through careful stewardship and your support our parish carries NO debt.
- **Parish team.** Those experienced in capital campaigns have assessed our parish-wide resources—staff, volunteers, parish members—and we have a “deep bench” of people in place to bring our parish forward through this exciting project.
- **Support for others:** Each year, all parishes help support Catholic Charities and other works of mercy ministries, retired clergy, parish renewal, tuition assistance for Catholic Schools and much more. Through our capital campaign, we will contribute 12% to support these vital programs. The remainder of the funds will go directly into our building and remodeling projects.



How You Can Get Involved

Throughout the *Living Our Faith, Building Our Future* campaign, Fr. Bob, the Capital Campaign Committee and volunteer workers will reach out to all members of our community to communicate the goals of our parish and describe how everyone can get involved.

Several important events are being held in order to give every parish family an opportunity to participate:

- 1) Every registered family will be invited to attend one of a series of campaign receptions that will be scheduled to allow all parishioners the opportunity to gather and to learn about the needs of our parish.
- 2) The families that are unable to attend a campaign reception will be able to read about our building and renovation plans through this campaign brochure, which will be mailed to their homes.
- 3) Those who do not respond by Commitment Weekend (October 29-30) will be personally contacted by fellow parishioners who will give their time to the task of increasing the awareness of this campaign.

During this campaign, we are asking everyone who calls Presentation their parish home to:

- **Pray for the success of the campaign**
- **Be an ambassador** for Presentation by getting involved and by sharing this information with as many people as you can.
- **Make your sacrificial pledge.** Whether you participate by attending a campaign reception, responding at Mass or by mail, or by receiving a parish volunteer into your home, it is your involvement and commitment that will make this campaign a success.



How To Pledge Your Support

Presentation would like to raise \$6,000,000 through the efforts of this campaign. Every member of our community is integral to our success in reaching this goal, and, therefore, each family is asked to consider making a pledge to the campaign to the best of their ability. No one can tell you how much you should give. The individual parishioner/family is the only one who actually decides what to contribute, since the financial obligations of each family are different.

Every member of our parish community is integral to our success in reaching this goal. Each family is asked to consider making a pledge to the campaign to the best of their ability. If feasible, a pledge of \$5,000 or more can be payable over a three year period. A pledge of \$5,000, with a 10% down payment of \$500, is \$125 per month, or \$4.11 a day. The gift plans in this brochure are provided as a suggested guideline when considering your pledge.

Everyone is asked to prayerfully reflect how their generosity expresses their gratitude for the gifts that God has given them. However, we know that a pledge of \$5,000 will be a challenge for some of our parish households. Therefore, it is vital to the success of our campaign that those who are able to make larger pledges do so. Individuals who are financially capable of pledging \$10,000, \$25,000, \$50,000, \$100,000 or more, are asked to step forward and become leaders of our campaign.

This is our parish and through everyone's participation we can achieve our goals. *Not everyone can make the same size gift, but everyone can make the same size sacrifice. All contributions from the smallest to the largest are gratefully appreciated.*

Suggested Gift Plans

Total Gift	10% Down Payment	3 Annual Payments	6 Semi-Annual Payments	12 Quarterly Payments	36 Monthly Payments	Daily Sacrifice
\$500,000	\$50,000	\$150,000	\$75,000	\$37,500	\$12,500	\$410.96
\$250,000	\$25,000	\$75,000	\$37,500	\$18,750	\$6,250	\$205.48
\$100,000	\$10,000	\$30,000	\$15,000	\$7,500	\$2,500	\$82.19
\$75,000	\$7,500	\$22,500	\$11,250	\$5,625	\$1,875	\$61.64
\$50,000	\$5,000	\$15,000	\$7,500	\$3,750	\$1,250	\$41.10
\$25,000	\$2,500	\$7,500	\$3,750	\$1,875	\$625	\$20.55
\$20,000	\$2,000	\$6,000	\$3,000	\$1,500	\$500	\$16.44
\$15,000	\$1,500	\$4,500	\$2,250	\$1,125	\$375	\$12.33
\$10,000	\$1,000	\$3,000	\$1,500	\$750	\$250	\$8.22
\$8,000	\$800	\$2,400	\$1,200	\$600	\$200	\$6.58
\$6,000	\$600	\$1,800	\$900	\$450	\$150	\$4.93
\$5,000	\$500	\$1,500	\$750	\$375	\$125	\$4.11

The gift plans in this brochure are provided as a suggested guideline when considering your pledge. Please review the gift plans carefully and select one that fits your family's financial situation. Pledges are not legally binding, but rather the expression of your intent. Payment amounts calculated assuming a 10% down payment for each pledge.

As You Make Your Pledge, Please Remember...

- Payments may be made in installments over a period of three (3) years.
- Your contributions to this Capital Campaign are in addition to your regular offering, and will be used for the purposes outlined in this brochure.
- Payment reminders and a special payment envelope will be mailed to you in accordance with the payment plan you choose. Please make checks payable to: **Presentation Capital Campaign.**
- Pledge payments are fully deductible for tax purposes.



*Not everyone can make
the same size gift;
but everyone can make
the same size sacrifice.*

How To Make Your Gift

Pledges Via Cash Or Check

Simply complete your pledge card by selecting the amount of your pledge and down payment (optional, but encouraged).

- Select your schedule of payment, i.e., monthly, quarterly, semi-annual or annual payments.
- Please make checks payable to **Presentation Capital Campaign**.
- Payment reminders will be mailed along with a special payment envelope in accordance with the plan you choose.
- Once completed, please return your pledge card in the weekly collection, bring it by the parish office or return it in the mail.

Online Giving-Pledges Via Credit / Debit/ Automatic Draft

- If you wish to make your pledge via credit, debit or automatic draft, please visit **www.churchofpresentation.org** to use either PayPal or ParishPay. Presentation does incur fees in using these services; however, if you set up Church of the Presentation as a bill payee through your online banking service, Presentation will receive your contribution "fee-free".

Gifts of Stock

Donors can use their own broker/agent or the parish agent to transfer stock.

- If the stock has been held long-term (over one year), the donor does not have to pay capital gains tax on the stock, and is allowed a tax deduction for the full value of the stock.
- Donors may also choose to donate stock in order to claim a loss, which may be beneficial for tax circumstances.
- In either case, the stock must first be transferred to the parish before being liquidated. Please contact the campaign office for more information.

Gifts from Retirement Accounts

The IRA Charitable Rollover provision of the 2015 PATH (Protecting Americans from Tax Hikes) Act permits individuals age 70.5 or older to contribute up to \$100,000 from a qualifying retirement account directly to Church of the Presentation (FED. ID #22-1854004) without recognizing the assets transferred to the charity as income. Please contact your financial advisor for additional information concerning gifts via retirement accounts.

Gifts of Property, Life Insurance, Annuities, Wills or Bequests

- Families or individuals can make gifts of real estate, personal property, automobiles, life insurance, estate bequests, annuities or charitable remainder trusts.
- For substantial gifts of property other than marketable securities, the IRS requires an appraisal. Please contact the parish campaign office for more information.

If you have any questions about the campaign or making your pledge, please contact the parish campaign office, 201.327.1313, ext. 830, or livingourfaithcampaign@gmail.com



Memorials

An individual or family will have the opportunity to memorialize a loved one or give thanks for blessings received through their monetary gift. Names will be memorialized in etched glass as you enter the narthex of the renovated and expanded church.

Federal and state laws on income and inheritance taxes encourage charitable giving. It may be particularly advantageous for some people to contribute stocks, appreciated securities, annuities, property or other valuables. In many cases, the tax savings may be more than your original investment in the gift. Because each situation is unique, we urge you to discuss such donations with a financial advisor.

Thank You Volunteers

Many people contribute to the life of our parish and provide vision for our future. Our deepest gratitude extends to those who have given the gifts of their time and talents to make this project a success.



Church of the Presentation

271 W Saddle River Rd | Upper Saddle River, NJ 07458

Phone: (201) 327.1313 | www.churchofpresentation.org