

**S. Nandedkar
& Associates**
ARCHITECTS . VALUERS

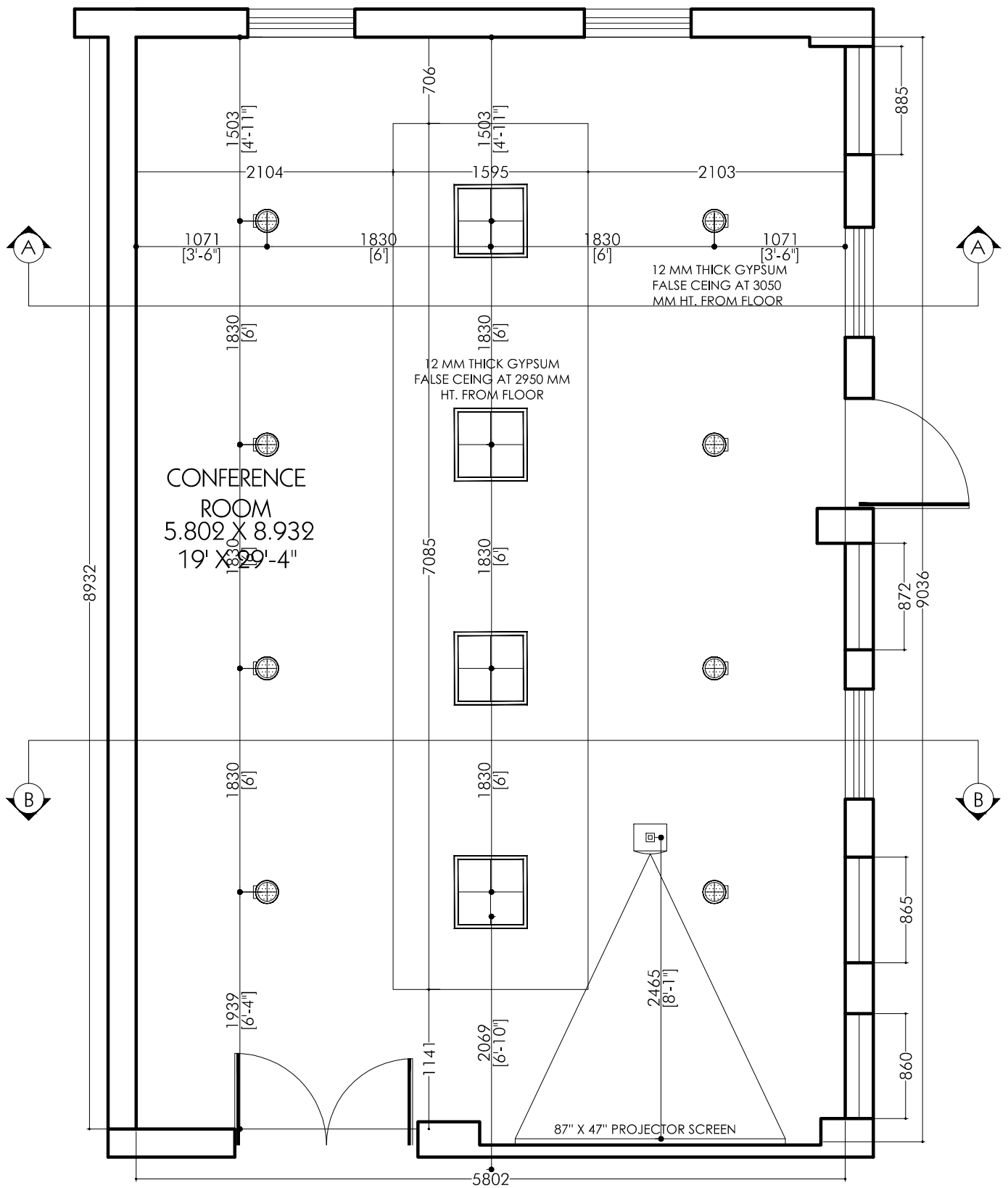
103, Utkarsha Umang, Ajni Square,
Near Mount Carmel School,
Nagpur 440 015 (Maharashtra)
Tel: +91 712 2252945
Fax: +91 712 2251921

Email Arch: officesna@gmail.com
Valuation: snavalue@gmail.com

**QUOTATION FOR ELECTRICAL WORK OF CABINS & CONFERENCE HALL, BOB, REGIONAL OFFICE,
NAGPUR.**

S.NO.	PARTICULARS	UNIT	QTY.	RATE	AMOUNT
	ELECTRICAL WORK				
la	Providing concealed light point on wall/partition/for light/fan/plug/bell with 2x1.5 ISI mark sheathed copper wire from switch to socket with ISI mark modular switch of approved make concealed M.S.box top plate and border.	No.	14.00		
b	Same as above but 5 Amps. Switch & socket on common lighting switch board.	No.	3.00		
c	Providing concealed independent plug point for water cooler/ note counting machine in cash cabins etc with ISI mark 3x2.5 mm 1100V. Grade PVC insulated and PVC sheathed copper wire in 2mm thick PVC pipe with ISI mark. Modular type 3 pin 5A Socket & switch and suitable modular plate/ M.S. box including floor/wall cutting & making the surface as it is approved make	No.	2.00		
e	Providing and fixing Modular type 5A 3No.of sockets with switches and suitable Modular plate/ms box concealed in wall/ partition for computer board.	No.	1.00		
f	Providing and fixing Modular type 16 A 2No.of sockets with switches and suitable Modular plate/ms box concealed in wall/ partition	No.	1.00		

2	Power Cable :-				
a	Providing laying & termination of Following armored Cable with 2x8 S.W.G. G.I. wire , on wall with G.I.Saddles.Polycab or as directed by architect makes				
b	4.0 C x 6 sq.mm Copper.. armoured.cable for Casset Acs	Rmt.	55.00		
3	Supply, installation, testing, commissioning of indoor recessed mounting 2' x 2' LED Fitting with head frame required for mounting on Gypsum or Grid ceiling 36/34 W CRCO2312036HP65 WIPRO MAKE/HAVELL'S-LHEWEBP79NW034 or as directed by Architect	No.	4.0		
4	Supply, installation, testing, Commissioning of Recessed mounted circular LED Downlighter with special frosted diffuser 15 W LED lres. Cat No. LD71-161-SML-65-FDWipro/Havell's-LHEBJNP70ZIWO15 or as directed by Architect.	No.	10.0		
5	Supply, installation, testing, Commissioning of Wall Bracket Light 11W	No	1		
	SUB TOTAL				
	5% Contengencies				
	TOTAL				
	Add GST 18%				
	NET TOTAL				



CONFERENCE ROOM PLAN

ELECTRIFICATION DETAILS

	2" X 2" 33 WATT LED LIGHT FIXTURE
	15 WATT LED LIGHT FIXTURE
	PROJECTOR EQUIPMENT

NOTE-

REMARKS	NO	DATE
REVISIONS		
DISTRIBUTION OF PRINTS		
ISSUED TO	NO	DATE

PROJECT-
PROPOSED INTERIOR RENOVATION WORK OF CONFERENCE ROOM
FOR:
BANK OF BARODA R.O., NAGPUR

DWG TITLE- ELCTRIFICATION & FALSE CEILING DETAILS OF CONFERENCE ROOM
DWG NO-
THE DRAWING IS THE PROPERTY OF S.NANDEDKAR & ASSOCIATES. IT IS NOT TO BE COPIED, REPRODUCED, EITHER WHOLLY OR IN PART, OR FOR ANY PURPOSE WITHOUT THE WRITTEN PERMISSION OF THE ARCHITECT. ANY SUCH VIOLATION WILL BE THE RESPONSIBILITY OF THE USER. ARCHITECTS S.NANDEDKAR & ASSOCIATES DO NOT TAKE ANY RESPONSIBILITY OF STRENGTH & STABILITY OF THE STRUCTURE IN CASE OF ANY DISCREPANCY FROM THE AS-BUILT DESIGN.

ARCHITECTS-
S.NANDEDKAR & ASSOCIATES
103 'UTKARSHA UMANGI', Beside MOUNT CARMEL, AJNISQUARE, NAGPUR-46
TEL- 0712 - 2252945, FAX - 0712 - 2251921

Rev.-	SCALE-
-	-
DATE -	DRAWN BY-