

Weekly Newsletter



August 3, 2017

Reconstruction

ID PFH 26(3)

Highway 75 between mileposts 206.7 and 207.9 through “Pebble Beach”

The roadway continues to be built up with select material being placed and compacted over the prepared foundation created from the old road material.

Drainage work is set to begin next week with culverts being removed and replaced and ditches being reshaped to improve water flow.

Please use extra caution as you drive through the project as the road surface will be much rougher and gravel like. There will be no centerline but cones will delineate the edges of the travelled way. We are suggesting that speed be kept to 25 MPH.

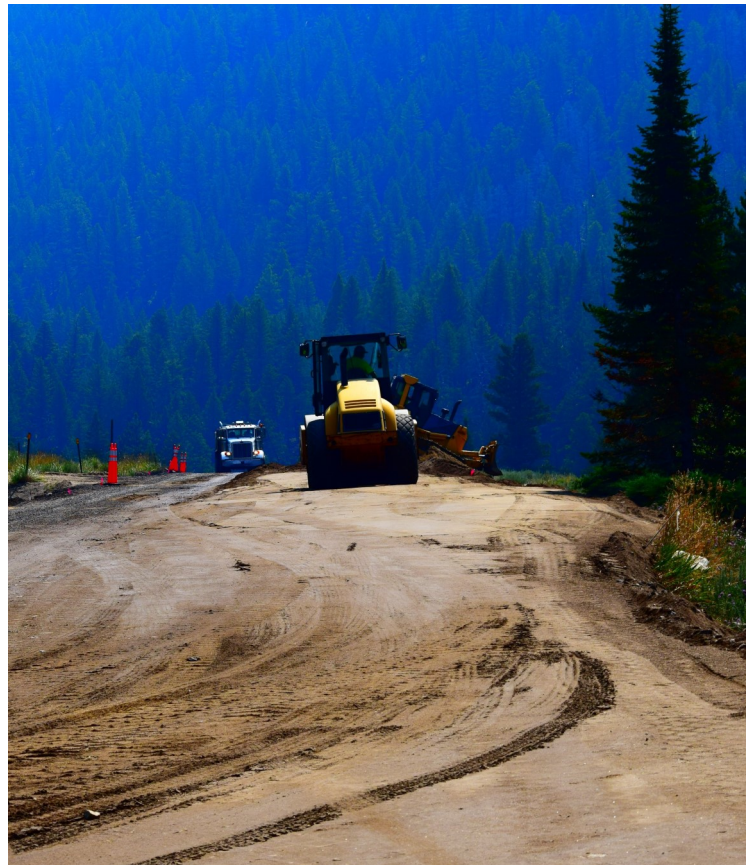
The traffic lights will be back up as needed, and may be in different areas within the project. Please be watchful as they may be moved from day to day.

During working hours, 15 minute delays will be continuing with traffic being controlled by flaggers, and travel through the narrow project is controlled with a pilot car.

We appreciate your cooperation and patience as we finish this project. We ask that you obey the traffic control flaggers and signals at all times and strive to respect your fellow motorists on all construction projects you encounter this season.

Thank You,

Pebble Beach Construction Staff



Road Closure Information

Week of August 7, 2017

The road surface, two-way traffic, and traffic light location may vary as you travel through the project during non-working hours. Flaggers and pilot car will still control traffic during working hours, 7am to 5:30 pm Monday thru Friday. Delays may be up to 15 minutes.

Contact Information:

Todd Butikofer, Project Manager

Federal Highway Administration

Questions/Comments:

Phone: (208) 838-2618

FAX: (208) 238-2616

Mailing Address:

HC 67 Box 649

Clayton, Idaho 83227

<https://flh.fhwa.dot.gov/projects/id/ketchum-challis/>

