

Pioneers in Engineering Robotics Competition

Kickoff Itinerary

March 11, 2017

Important: Please have students fill out the Liability form before coming to Kickoff.

What to Bring:

- Lunch money
- One \$100 check per team payable to "Pioneers in Engineering Foundation"

Schedule

| Time | Event Name | Location |
|---------------|---|--|
| 9AM - 9:30AM | Check-in | Hearst Annex A1 |
| 9:30AM - 10AM | Kickoff Presentation | Hearst Annex A1 |
| 10AM - 11AM | Robot Assembly | Etcheverry Hall |
| | Parent/Teacher Meeting | Hearst Annex A1 |
| 11AM - 2PM | Lunch, Tool Training, Photos (according to block schedule) | Etcheverry Hall, O'Brien Breezeway, Berkeley "North Side" |
| 2PM - 4PM | Workshops / Robot Assembly | 306 Soda Hall (HP Auditorium), 380 Soda Hall, 271 Soda Hall |
| 4PM - 5PM | Game Reveal and Field Q&A | Etcheverry Hall, 3108 Etcheverry Hall |

Block A: Hayward, Leadership, Realm Charter School, Coliseum, Oakland, Aspire, Lighthouse Community Charter High

Block B: Lighthouse Community Charter High, Albany, El Cerrito, Hercules, NCLC, Saint Mary's

Block C: ACLC, Bishop O'Dowd, Pinole, Arroyo, Encinal, De Anza

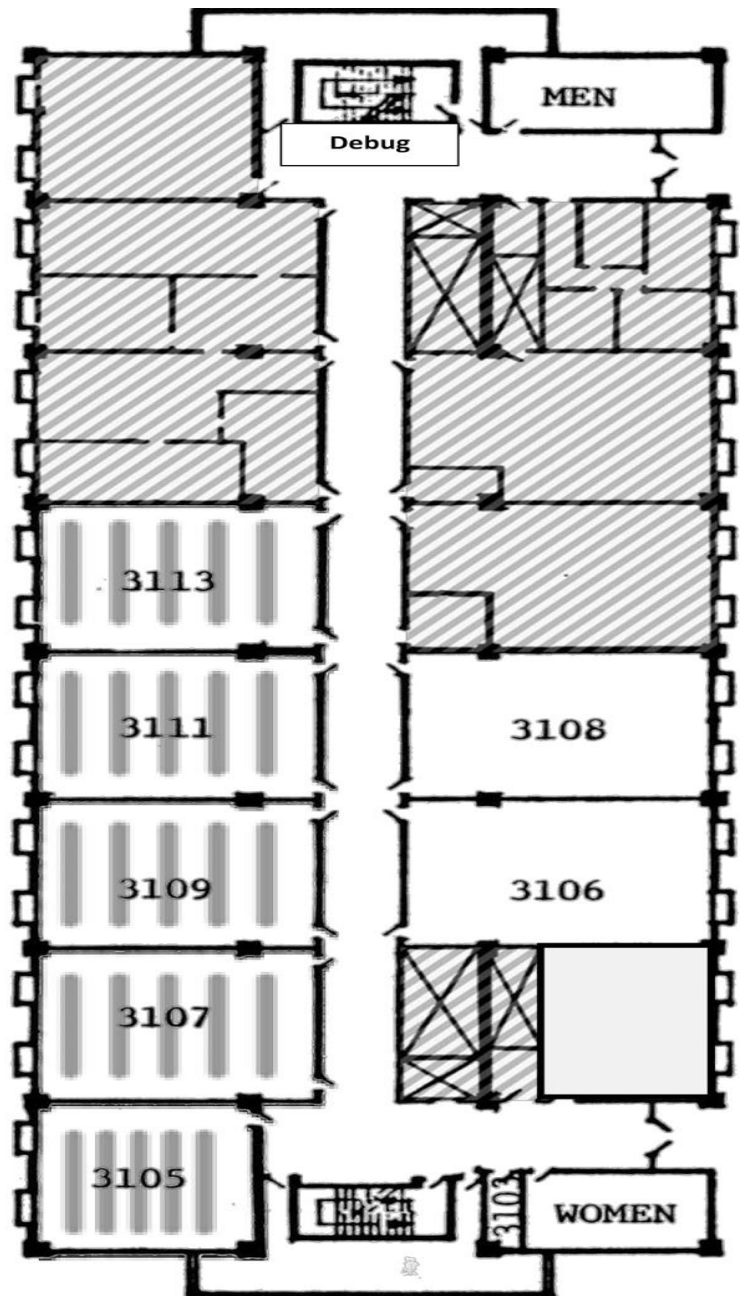
| Block schedule (11AM - 2PM) | | | |
|-----------------------------|---|---|---|
| | Block A | Block B | Block C |
| 11:00 AM | Tool Training and Photos (O'Brien Breezeway) | Lunch (Berkeley "North Side") | Robot Assembly (Etcheverry Hall) |
| 12:00 PM | Robot Assembly (Etcheverry Hall) | Tool Training and Photos (O'Brien Breezeway) | Lunch (Berkeley "North Side") |
| 1:00 PM | Lunch (Berkeley "North Side") | Robot Assembly (Etcheverry Hall) | Tool Training and Photos (O'Brien Breezeway) |

| Workshop Group Schedule (2PM - 4PM) | | | |
|-------------------------------------|-------------------------------|--|---------------------------------------|
| | 306 Soda Hall (HP Auditorium) | 380 Soda Hall | 271 Soda Hall |
| 2PM-3PM | Scholarship Workshop | Events: Keys to Design Review, Scrimmage, and More | Intro to Programming |
| 3PM - 4PM | Game and Strategic Analysis | "We're all in this together": Team and Resource Management | Sensors and Autonomous Programming |

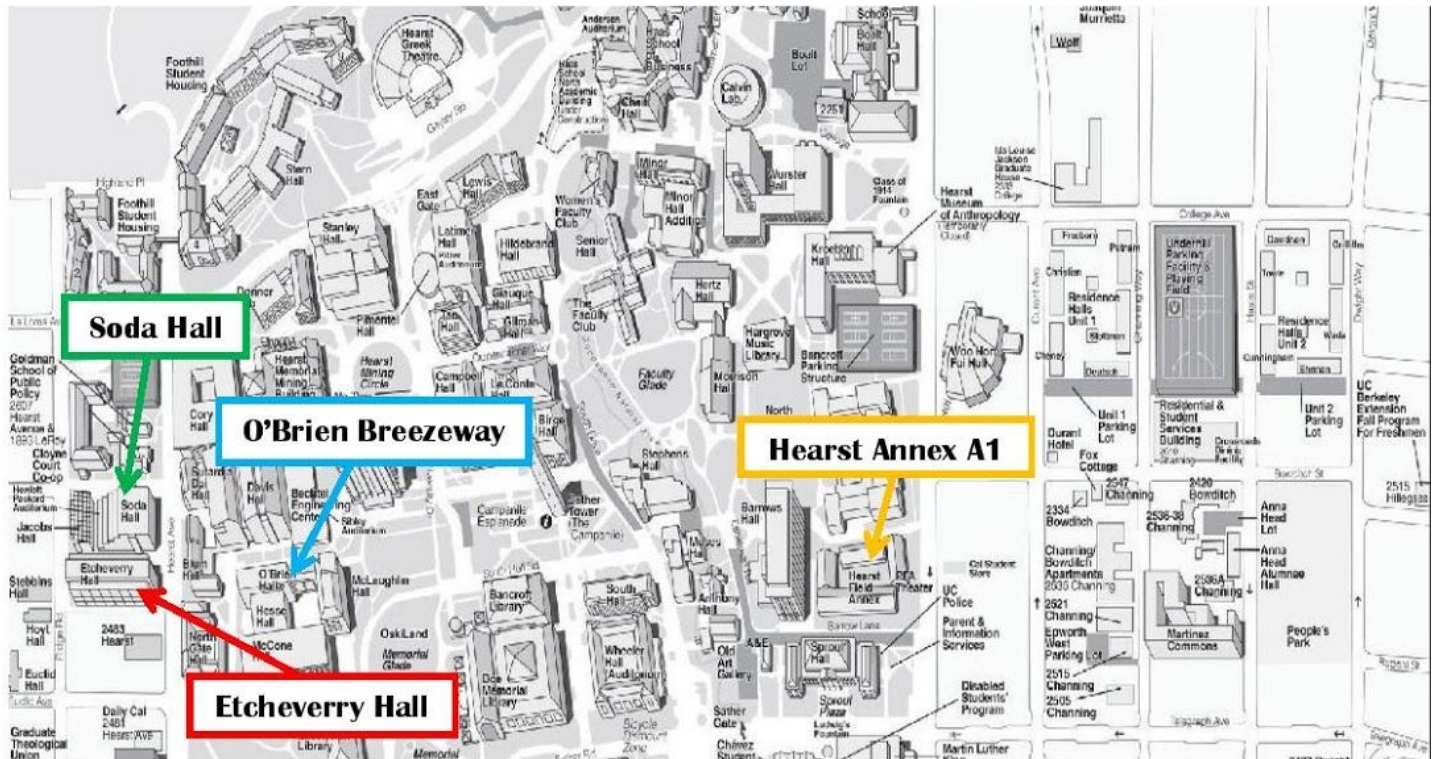


Etcheverry Hall Map Layout

| Location: | School Name: |
|--------------------|----------------------|
| 3113 | Hayward |
| | Leadership |
| | Realm Charter |
| 3111 | Coliseum |
| | Oakland |
| | Aspire |
| 3109 | Lighthouse |
| | Albany |
| | El Cerrito |
| 3107 | Hercules |
| | NCLC |
| | Saint Mary's |
| 3106 | ACLC |
| | Bishop O'Dowd |
| | Pinole |
| 3105 | Arroyo |
| | Encinal |
| | De Anza |
| 3108 | Field |
| Etcheverry Hallway | Debug, Tool Checkout |



UC Berkeley Campus Map



Directions to the UC Berkeley Campus

Instructions:

- Take I-80 West/580 East from the north, or I-80 East/580 West from the south, to University Avenue.
- Exit onto University Avenue and head east (away from the bay).
- Continue east on University Avenue for approximately 1.5 miles to **Oxford Street**.

Parking at UC Berkeley (North Side):

There is unlimited free parking for all cars in areas marked for residential parking permits (F or G) on Saturday (no permits required, just look for parking zone signs marked "F" and/or "G"). METERS AND PARKING LOTS ARE STILL ENFORCED. There is two-hour free parking on Ridge directly across from Etcheverry Hall (**black star**) and Soda Hall (**black asterisk**), but this time limit is enforced by the city. Please see the map below. **Dotted** areas are paid and/or time-restricted. **Dashed** roads have free parking on weekends. There is also parking available in the Upper and Lower Hearst Parking Structures (denoted with **black circles**). Fees may apply for the structures.

