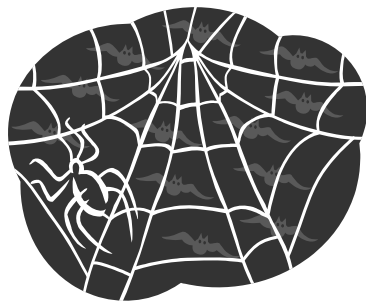




September

Monthly Activity Calendar– 3 Day Morning Class
Our Science Unit is “Colors & Shapes”

<i>Sunday</i>	<i>Monday</i>	<i>Tuesday</i>	<i>Wednesday</i>	<i>Thursday</i>	<i>Friday</i>	<i>Saturday</i>
				1	2	3
4	5	6 Mandatory Parents Mtg. 530-615pm	7 <u>1st Day</u> <u>New Students Only</u> AM: 9am—11am PM & Full Day 1230-230pm	8 <u>2nd Day</u> <u>All Students</u> AM: 9am—11am PM & Full Day 1230-230pm	9	10
11	12	13 Normal Schedule Begins Sound of	14 the week “a”	15 Show & Tell “a”	16	17
18	19	20 Quiet Heart 9:15-10am Sound of	21 the week “b”	22 Show & Tell “b”	23	24
25	26	27 Sound of	28 ART the week “c”	29 Show & Tell “c” Kindermusik	30	



October

Monthly Activity Calendar-3 Day Morning Class
Our Science Unit is “Spiders”

Sunday

Monday

Tuesday

Wednesday

Thursday

Friday

Saturday


						1
2	3	4 Quiet Heart 915-10am Sound	5 of the	6 Field Trip <u>Pumpkin Patch</u> <u>945am- 11am</u> Show & Tell Week “d”	7	8
9	10	11 Sound	12 of the	13 Show & Tell Week “e”	14	15
16	17	18 Quiet Heart 915-10am Sound of	19 3 Day Kindermusik the week “f”	20 <u>No School</u> <u>Teacher</u> <u>Inservice</u>	21	22
23	24 5 day Kinder musik Happy Halloween!!!!	25 Sound of	26 ART The week	27 Halloween Party “f & g” 	28	29
30	31					

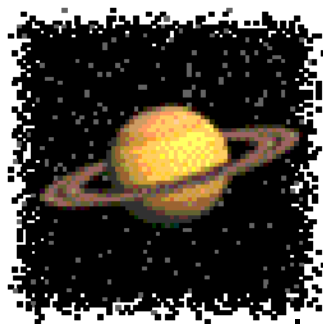


November

Monthly Activity Calendar– 3 Day Morning Class


A traveling Box on Native Americans will be available in class this month.

<i>Sunday</i>	<i>Monday</i>	<i>Tuesday</i>	<i>Wednesday</i>	<i>Thursday</i>	<i>Friday</i>	<i>Saturday</i>
		1 PJ Day Quiet Heart 9:15-10am Sound	2 Of the	3 Picture Day! Show & Tell Week “g”	4	5
6	7	8 Sound	9 Of the	10 Show & Tell Week “h”	11 No School Veteran’s Day	12
13	14	15 Quiet Heart 9:15-10am Sound	16 Of the	17 Show & Tell Week “i”	18	19
20	21	22 Sound	23 Thanksgiving Party 845am- 1145am 	24 <u>No School</u> <u>Thanksgiving</u> <u>Holiday</u>	25	26
27	28	29 Quiet Heart 9:15-10am Of the	30 Week “j”	Show & Tell		



December

Monthly Activity Calendar – 3 Day Morning Class
Our Science Unit is “Solar System”

<i>Sunday</i>	<i>Monday</i>	<i>Tuesday</i>	<i>Wednesday</i>	<i>Thursday</i>	<i>Friday</i>	<i>Saturday</i>
				1 Show & Tell week “j”	2	3
4	5	6 Sound of	7 the week	8 Show & Tell “k”	9 School Holiday Party 530-730pm 	10
11	12	13 Quiet Heart 9:15-10am Sound of	14 the week	15 Show & Tell “l”	16 Tentative Field Trip Olympic Ballet “The Nutcracker”	17
18 Winter	19 Break	20 Winter	21 Break	22 Winter	23 Break	24 Christmas Eve
25 Christmas	26 Winter	27 Break	28 Winter	29 Break	30 Winter	31 New Year’s Eve



January

Monthly Activity Calendar– 3 Day Morning Class
Our Science Unit is “**Solar System**”

<i>Sunday</i>	<i>Monday</i>	<i>Tuesday</i>	<i>Wednesday</i>	<i>Thursday</i>	<i>Friday</i>	<i>Saturday</i>
1	2	3 Sound of	4 the week	5 Show & Tell “m”	6	7
8	9	10 Quiet Heart 9:15-10am Sound of	11 the week	12 Show & Tell “n”	13	14
15	16 No School MLK Day	17 <u>No School</u> <u>Teacher In</u> <u>Service</u> <u>Parent Conf.</u>	18 <u>Early</u> <u>Release 230pm</u> <u>Parent Conf.</u> 3-6pm	19 <u>Early</u> <u>Release 230pm</u> <u>Parent Conf.</u> 3-6pm	20	21
22	23	24 Quiet Heart 9:15-10am Sound of	25 the week	26 Show & Tell “o”	27	28
29	30	31 Sound of	the week	Show & Tell “p”		



February

Monthly Activity Calendar-3 Day Morning Class
Our Science Unit is “Safety”

<i>Sunday</i>	<i>Monday</i>	<i>Tuesday</i>	<i>Wednesday</i>	<i>Thursday</i>	<i>Friday</i>	<i>Saturday</i>
			1 the week	2 Show & Tell “p”	3	4
5	6	7 Quiet Heart 9:15-10am Sound of	8 the week	9 Tentative In class Field Trip Fire Station Show & Tell “q”	10	11
12	13	14 Valentine’s Exchange Party Sound of	15 the week	16 Show & Tell “r”	17	18
19	20 No School President’s Holiday	21 No School President’s Holiday	22 Sound of	23 Show & Tell the week “s”	24	25
26	27	28 Quiet Heart 9:15-10am Sound of	29 the week	Show & Tell “s & t”		



March

Monthly Activity Calendar-3 Day Morning Class
Our Science Unit is **“The Body”**

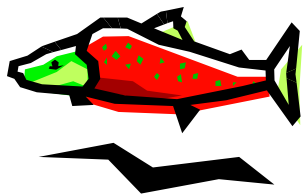
<i>Sunday</i>	<i>Monday</i>	<i>Tuesday</i>	<i>Wednesday</i>	<i>Thursday</i>	<i>Friday</i>	<i>Saturday</i>
				1 Show & Tell	2	3
		Sound of	the week	“s & t”		
4	5	6	7	8 In class field trip 10-1045am Imagine Museum Show & Tell “u”	9	10
		Sound of	the week			
11	12	13 Quiet Heart 9:15-10am	14 Show & Tell	15 No School Teacher In service	16	17
		Sound of	the week “u”			
18	19	20	21	22 Show & Tell	23	24
		Sound of	the week	“v”		
25	26	27 Quiet Heart 9:15-10am	28	29 Show & Tell	30	31
		Sound of	the week	“w”		



April

Monthly Activity Calendar– 3 Day Morning Class
Our Science Unit is “**Frogs**”

<i>Sunday</i>	<i>Monday</i>	<i>Tuesday</i>	<i>Wednesday</i>	<i>Thursday</i>	<i>Friday</i>	<i>Saturday</i>
1	2	3 No School Spring Break	4 No School Spring Break	5 No School Spring Break	6	7
8	9	10 Tentative In class Field Trip Frog Lady Sound of	11 the week	12 Show & Tell “x”	13	14
15	16	17 Sound of	18 the week	19 Show & Tell “y”	20	21
22	23	24 Quiet Heart 9:15-10am Sound of	25 the week	26 Show & Tell “z”	27	28
29	30					



May

Monthly Activity Calendar– 3 Day Morning Class
Our Science Unit is “**Salmon**”

<i>Sunday</i>	<i>Monday</i>	<i>Tuesday</i>	<i>Wednesday</i>	<i>Thursday</i>	<i>Friday</i>	<i>Saturday</i>
		1 Parent Observations Sound of	2 Parent Observations the week	3 Parent Observations Show & Tell “a”	4	5
6	7	8 Parent Observations Quiet Heart 9:15-10am Sound of	9 Parent Observations Show & Tell the week “e”	10 No School Teacher Inservice	11	12
13	14	15 Sound of	16 the week	17 Show & Tell “i”	18	19
20	21	22 Quiet Heart 9:15-10am Sound of	23 the week	24 Show & Tell “o”	25	26
27	28 No School Memorial Day	29 Sound of	30 the week	31 Show & Tell “u”		



June

Monthly Activity Calendar– 3 Day Morning Class
Our Science Unit is “**Salmon**”

<i>Sunday</i>	<i>Monday</i>	<i>Tuesday</i>	<i>Wednesday</i>	<i>Thursday</i>	<i>Friday</i>	<i>Saturday</i>
					1	2
3	4	5 Quiet Heart 9:15-10am Sound of the	6 Show & Tell week “Favorite”	7 Field Trip Deer Creek Fish Hatchery 10am—noon	8 <u>Last Full Day of School</u> <u>Graduation Party</u> <u>9am—1030am</u>	9