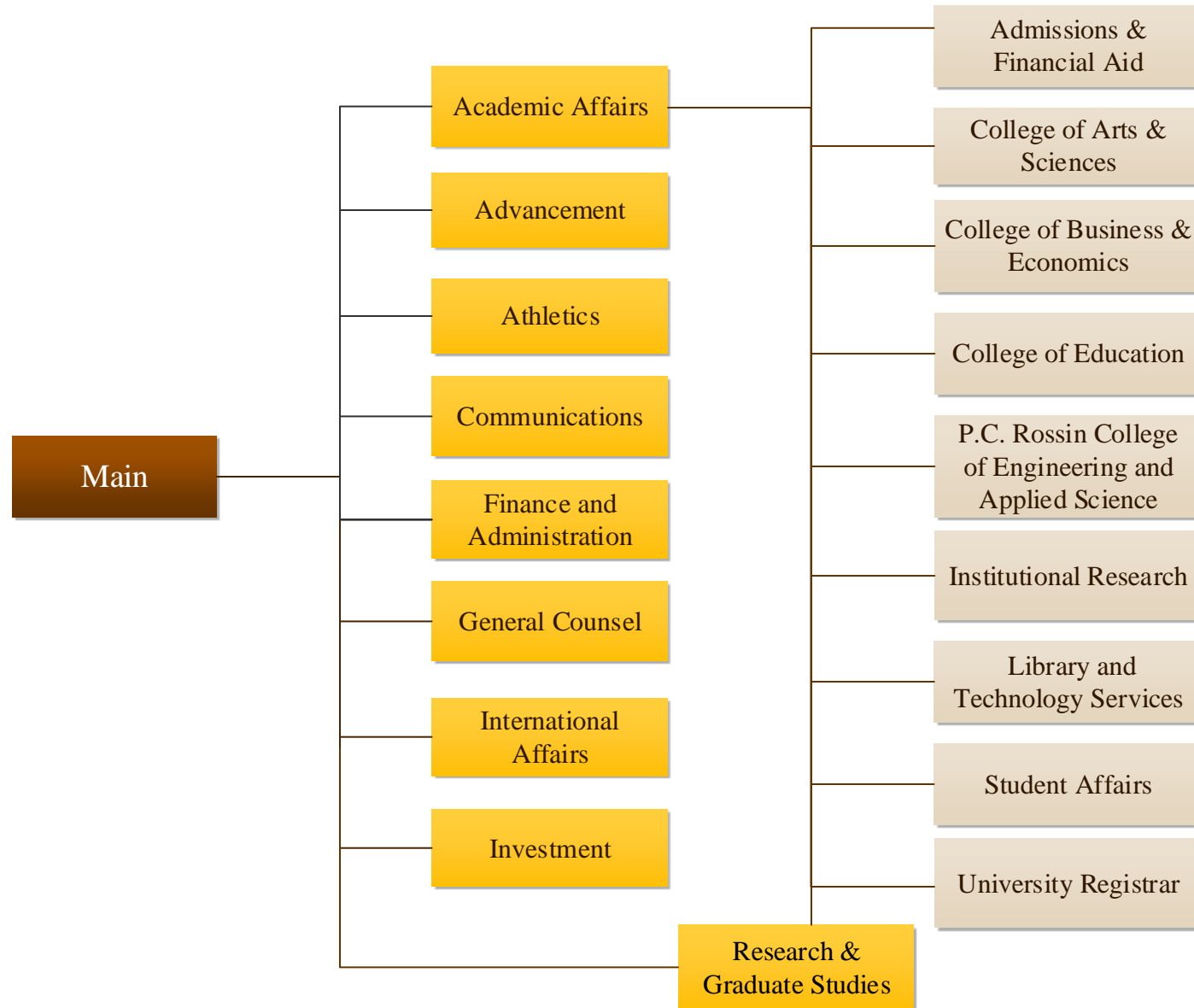
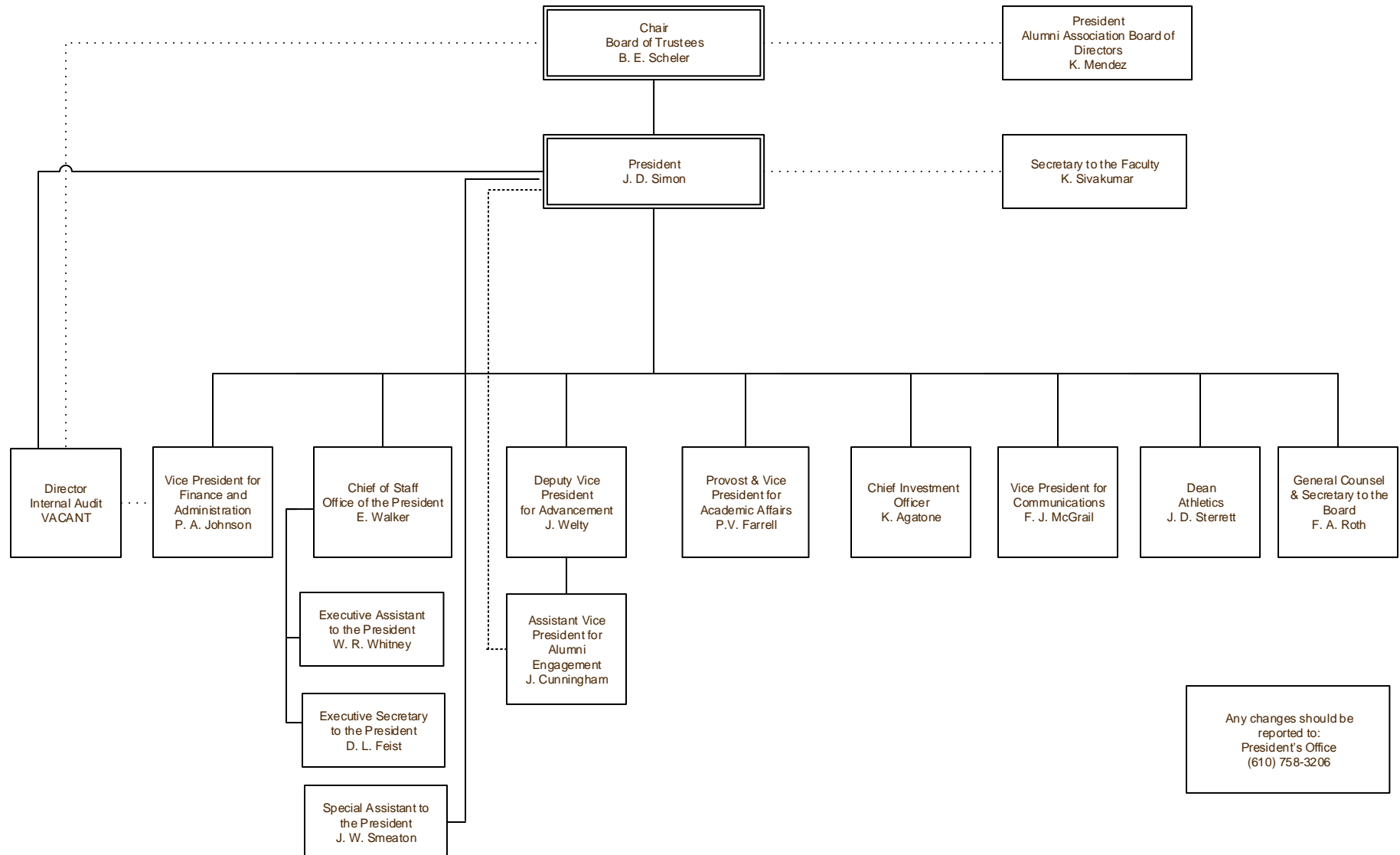


Organization Chart Navigation Panel





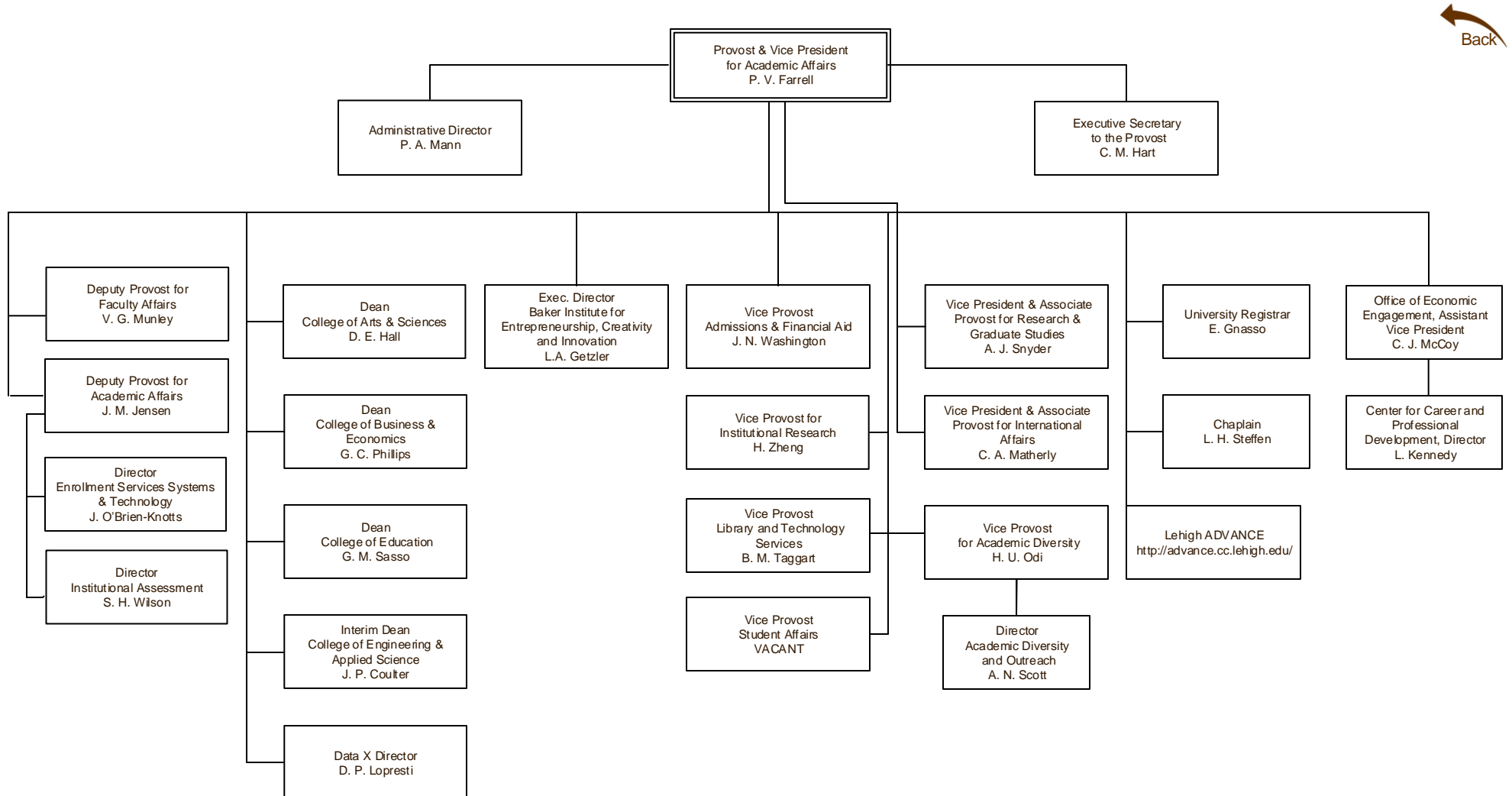
----- Indicates dual reporting line

———— Indicates direct report

Organization Chart

Provost & VP of Academic Affairs

Last Update:
August 2, 2016

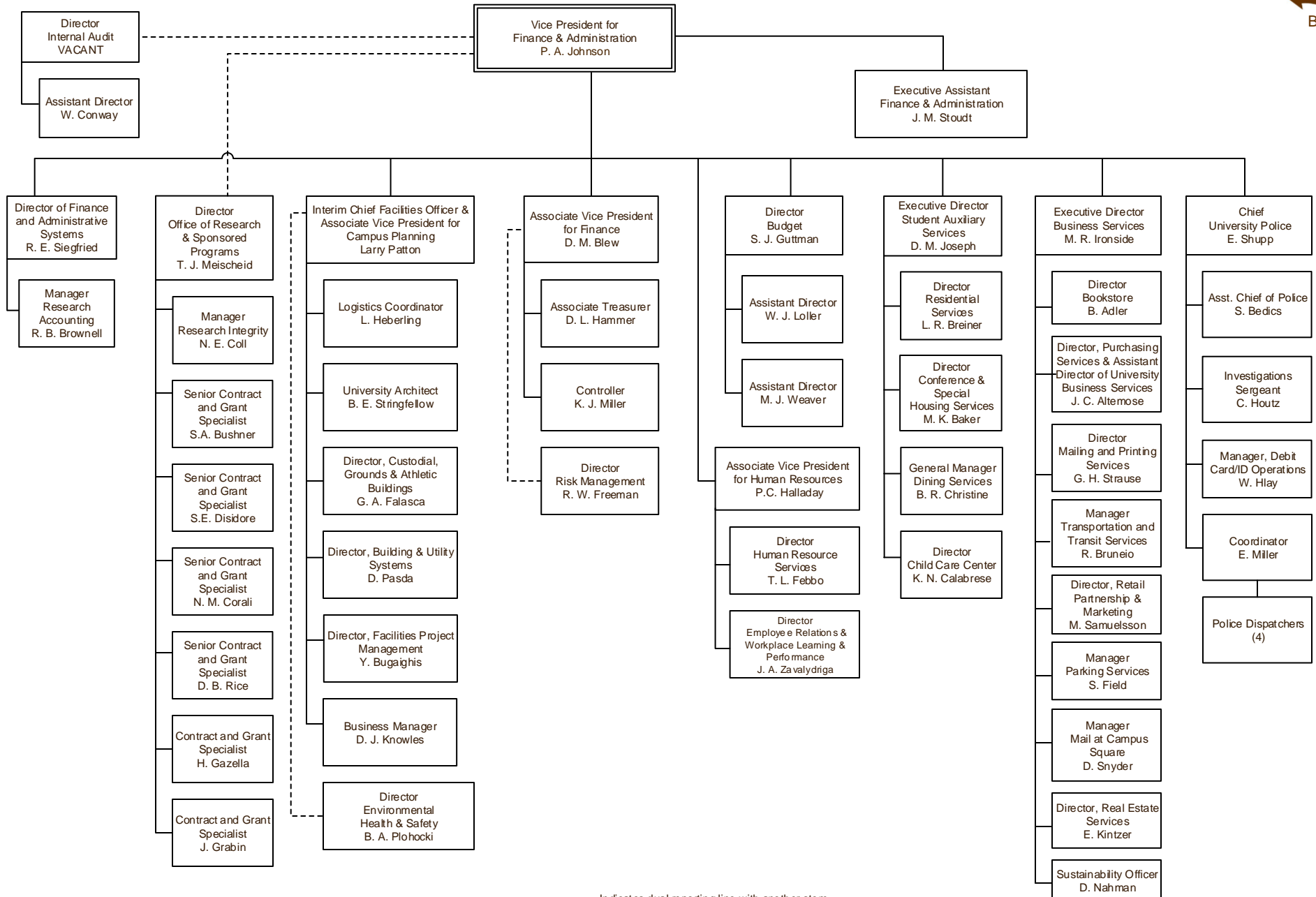


----- Indicates dual reporting line
 ————— Indicates direct report

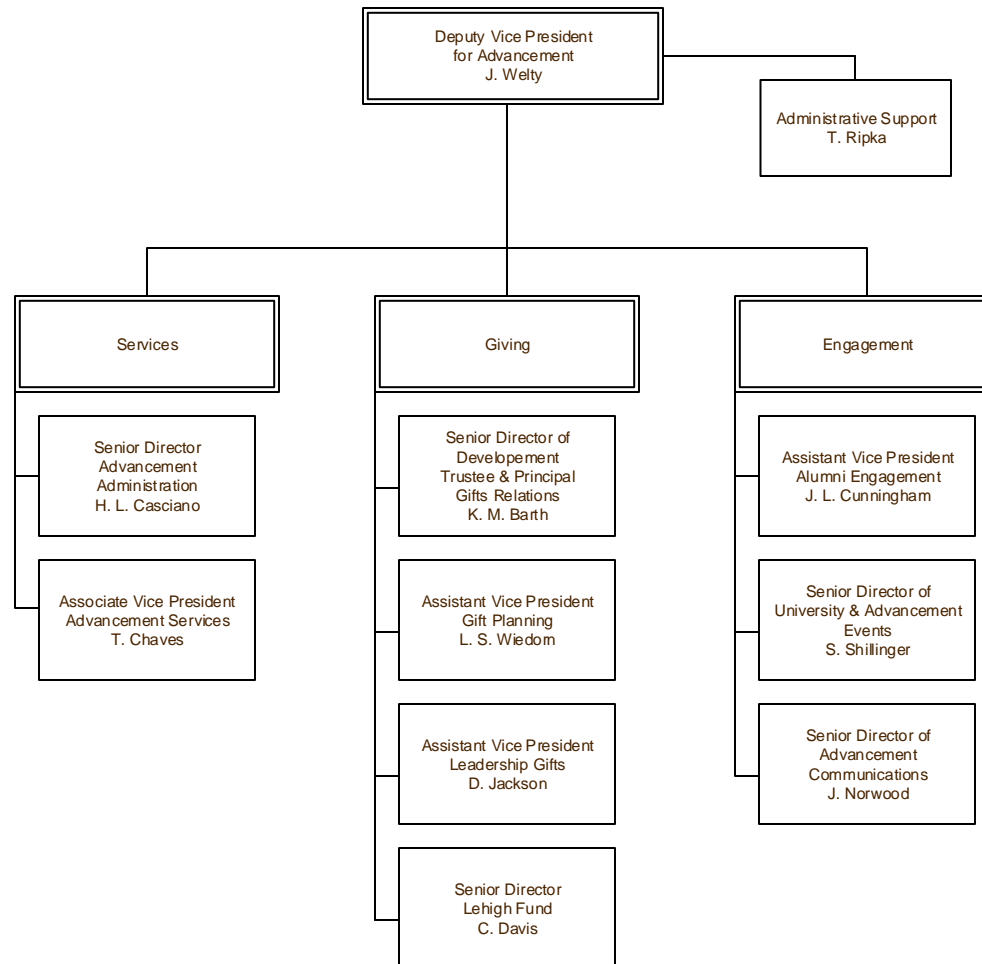
Organization Chart

Finance & Administration

Last Update:
August 2, 2016



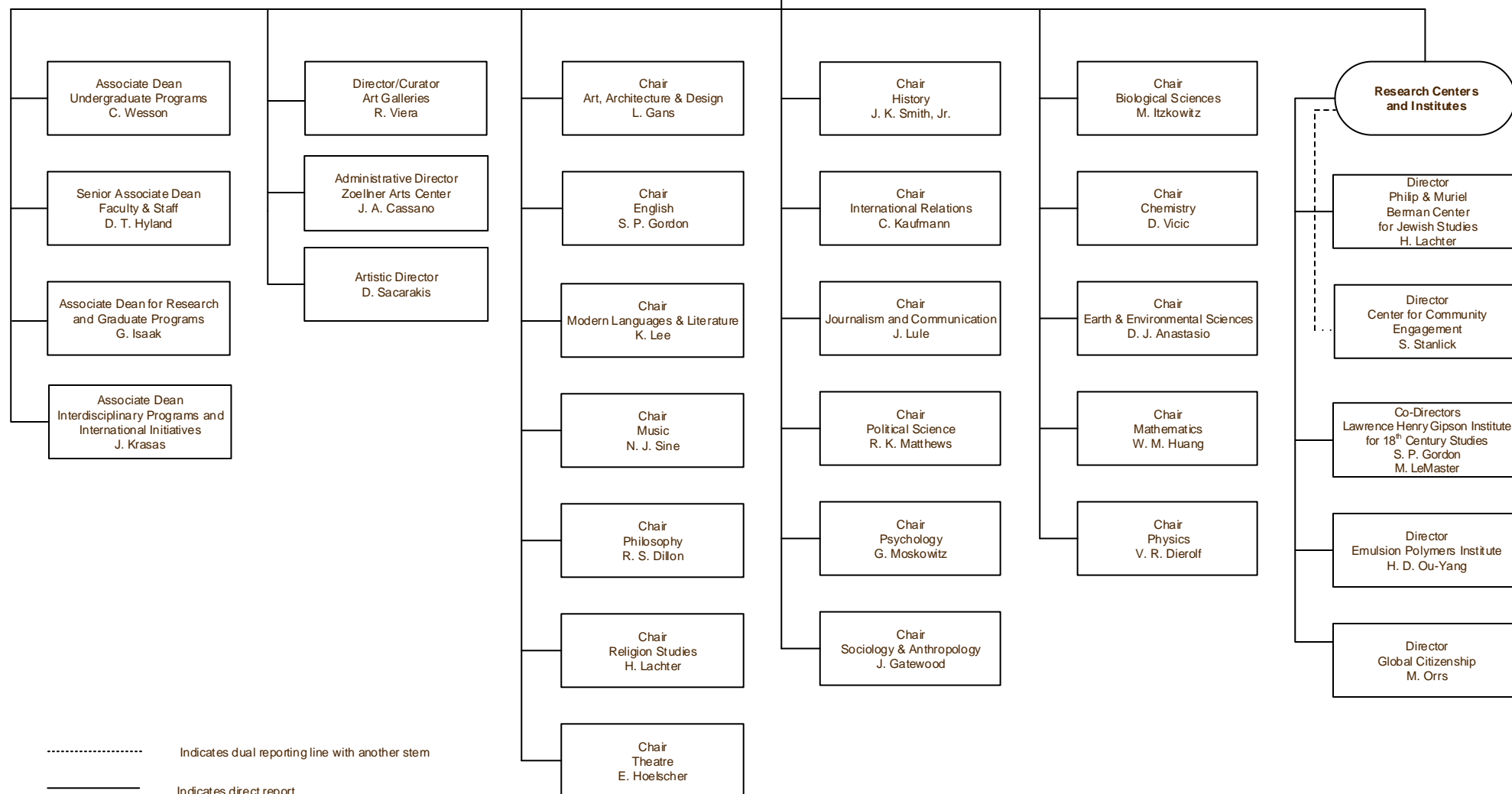
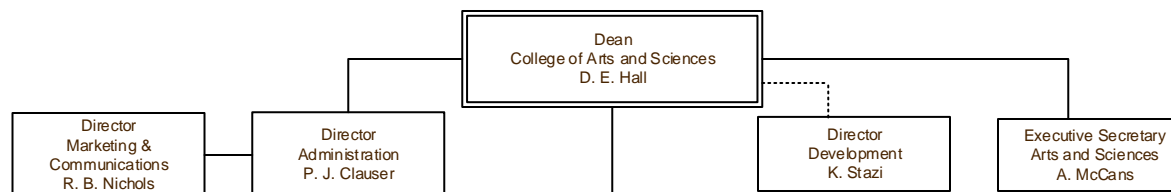
[Back](#)



Organization Chart

College of Arts & Sciences

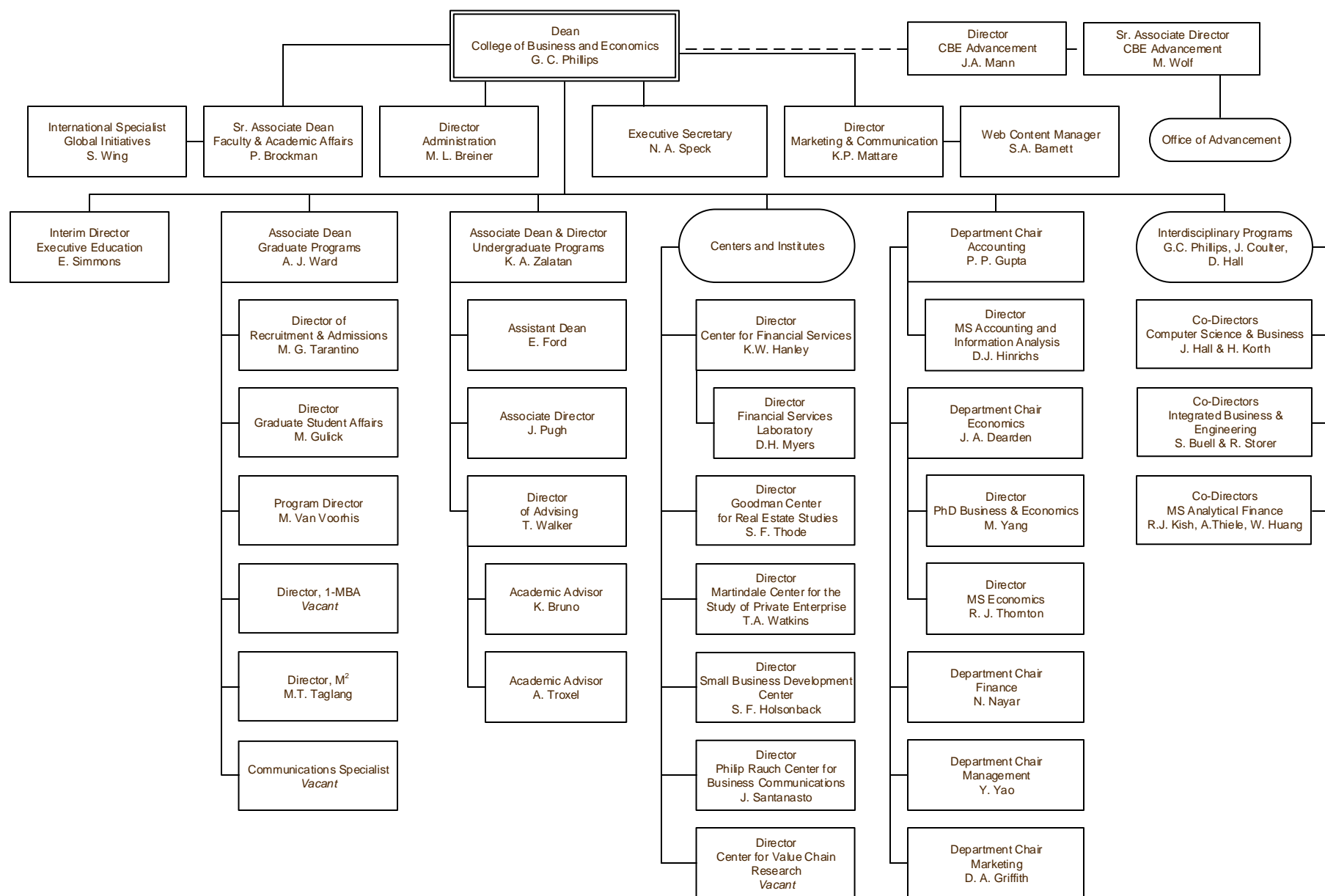
Last Update:
August 2, 2016



Organization Chart

College of Business & Economics

Last Update:
August 2, 2016



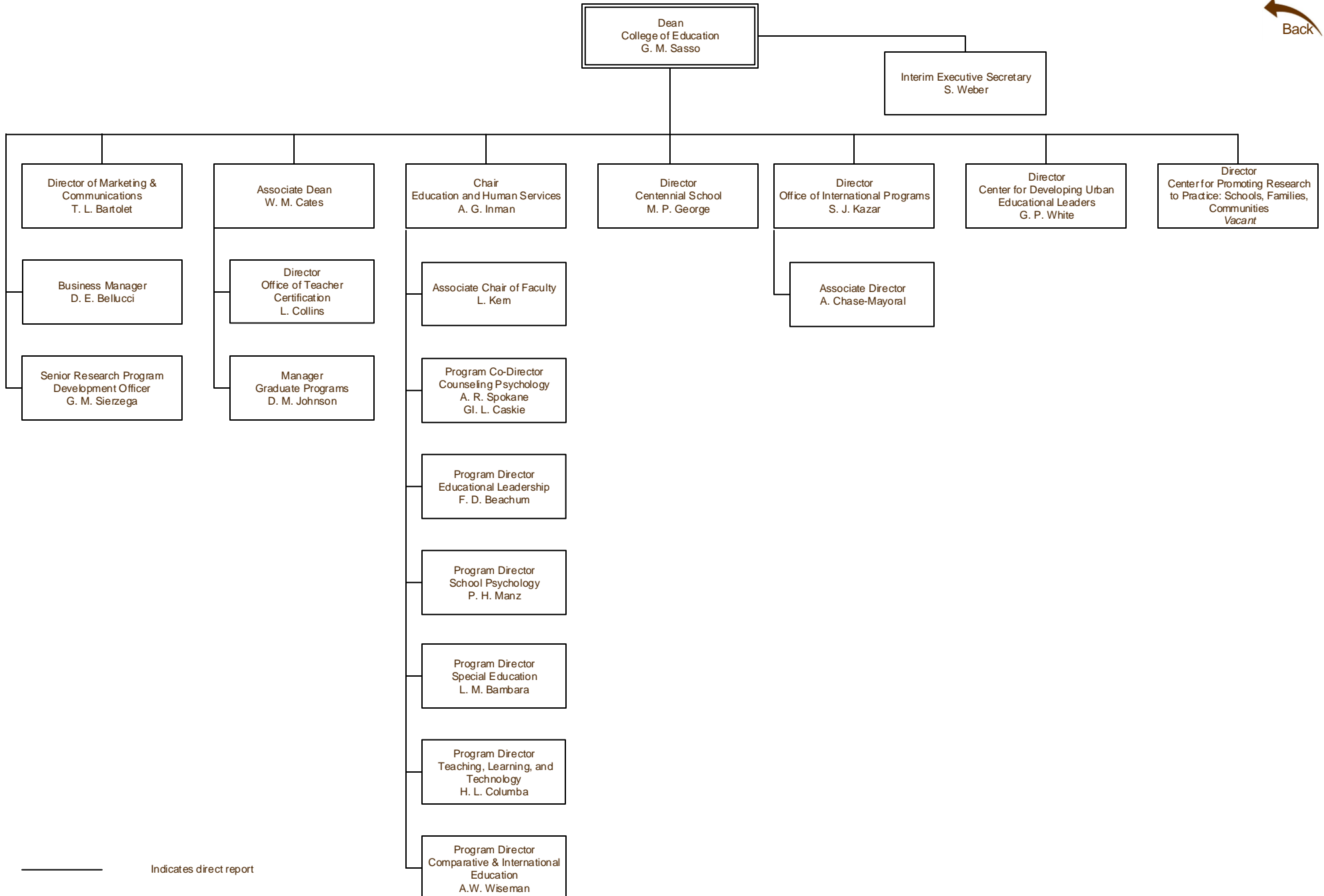
..... Indicates dual reporting line
———— Indicates direct report



Organization Chart

College of Education

Last Update:
August 2, 2016

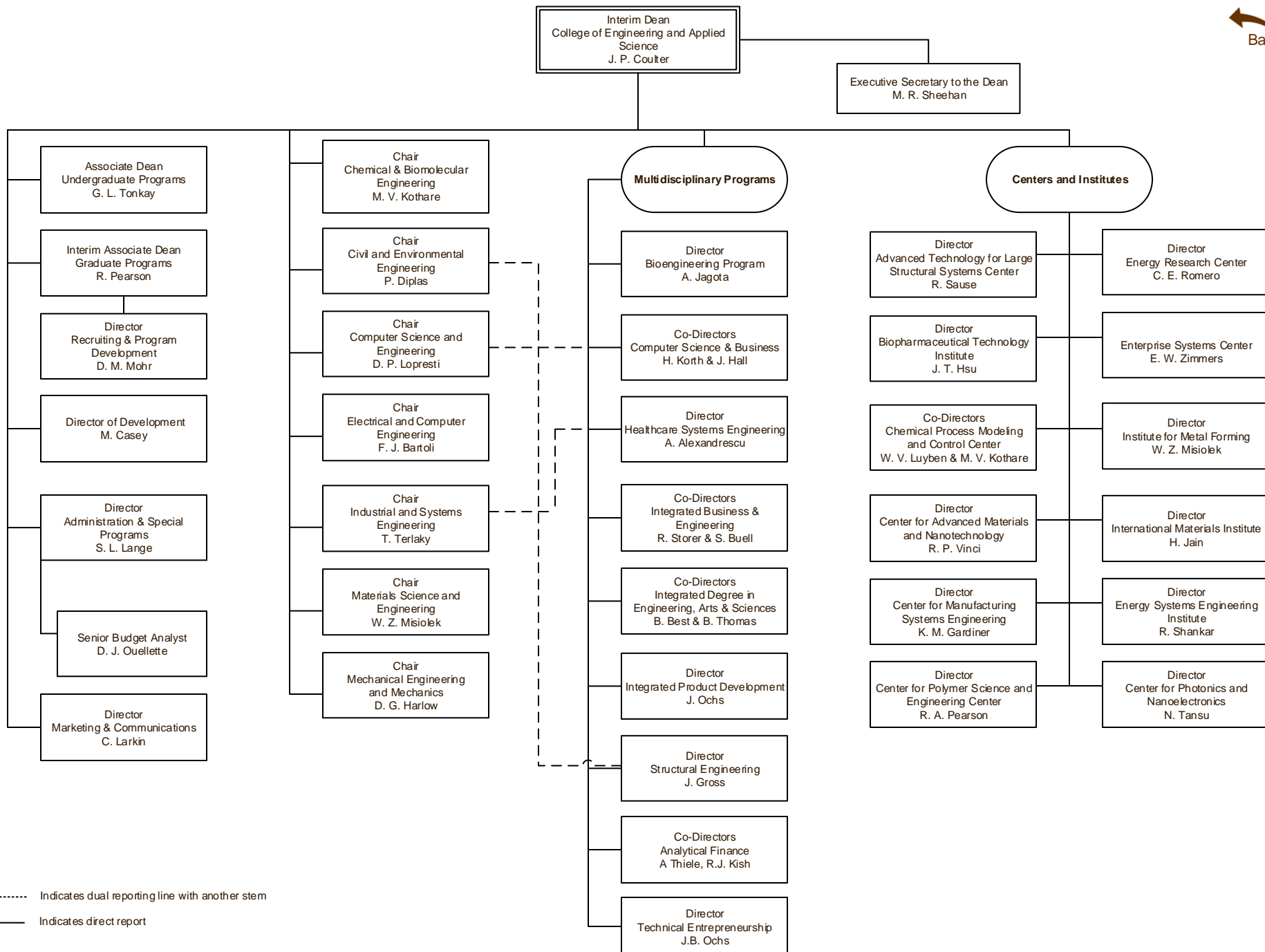


Organization Chart

Last Update:

August 2, 2016

P.C. Rossin College of Engineering & Applied Science

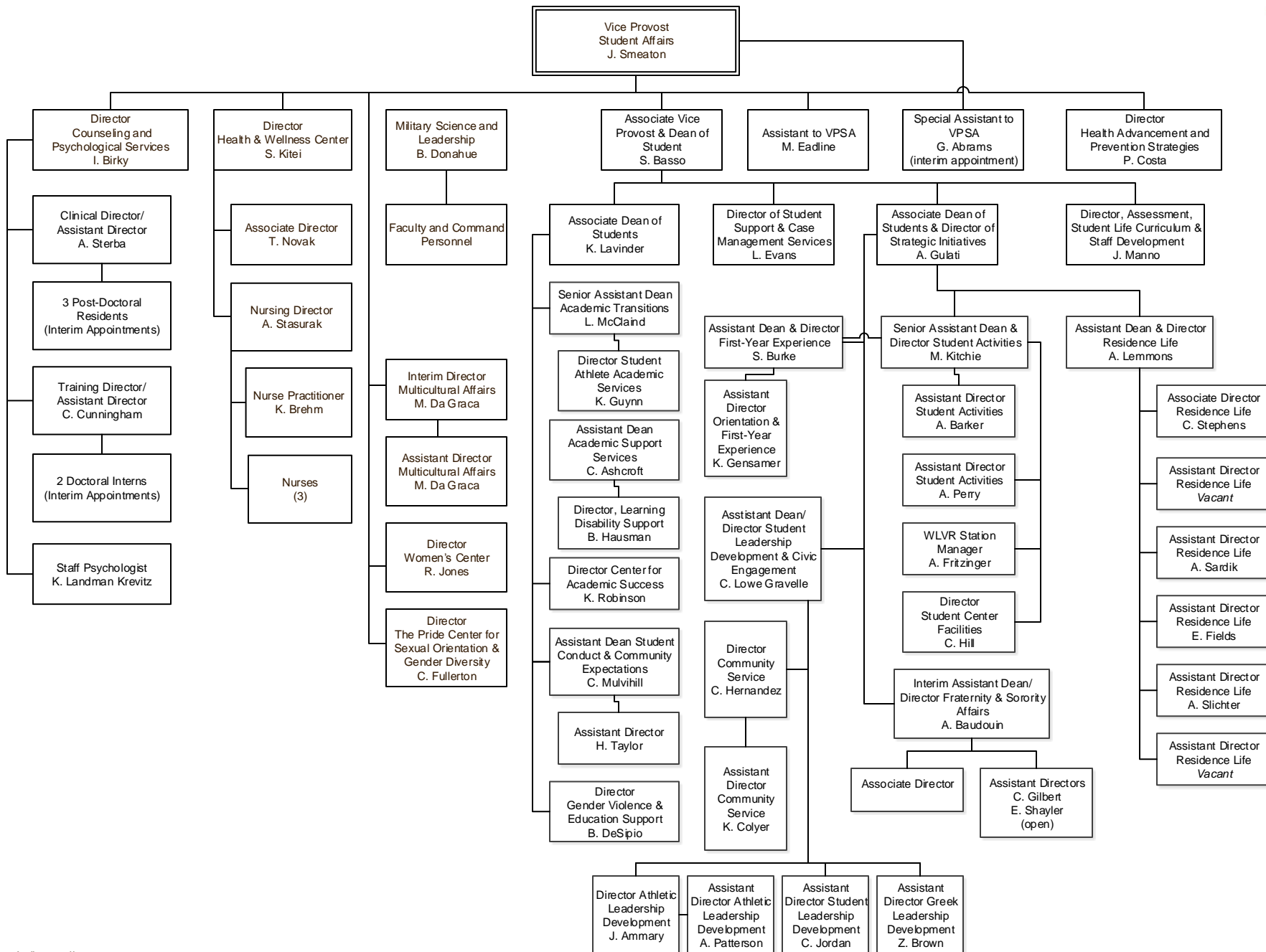


Organization Chart

Student Affairs

Last Update:

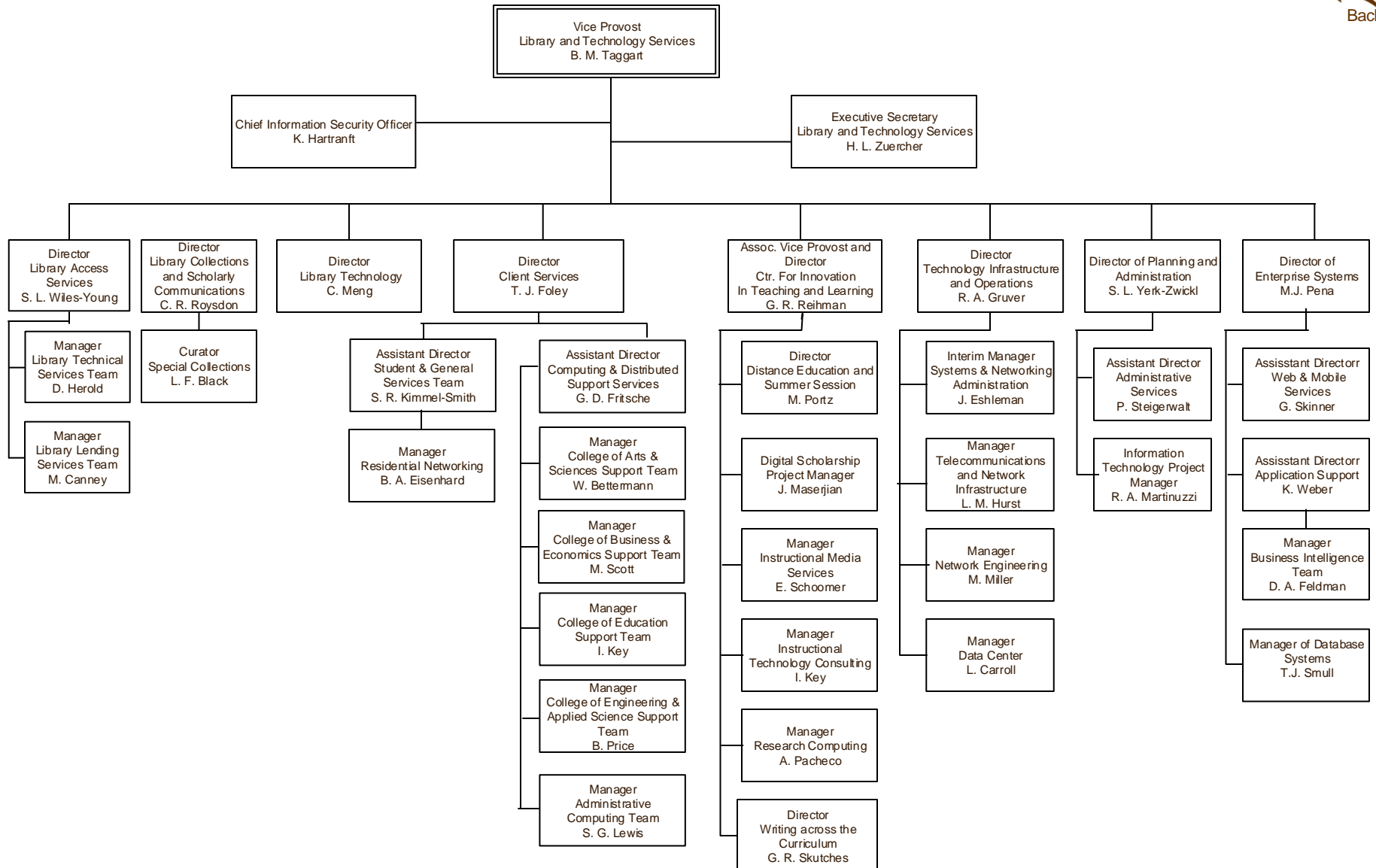
August 2, 2016



Organization Chart

Library & Technology Services

Last Update:
August 2, 2016

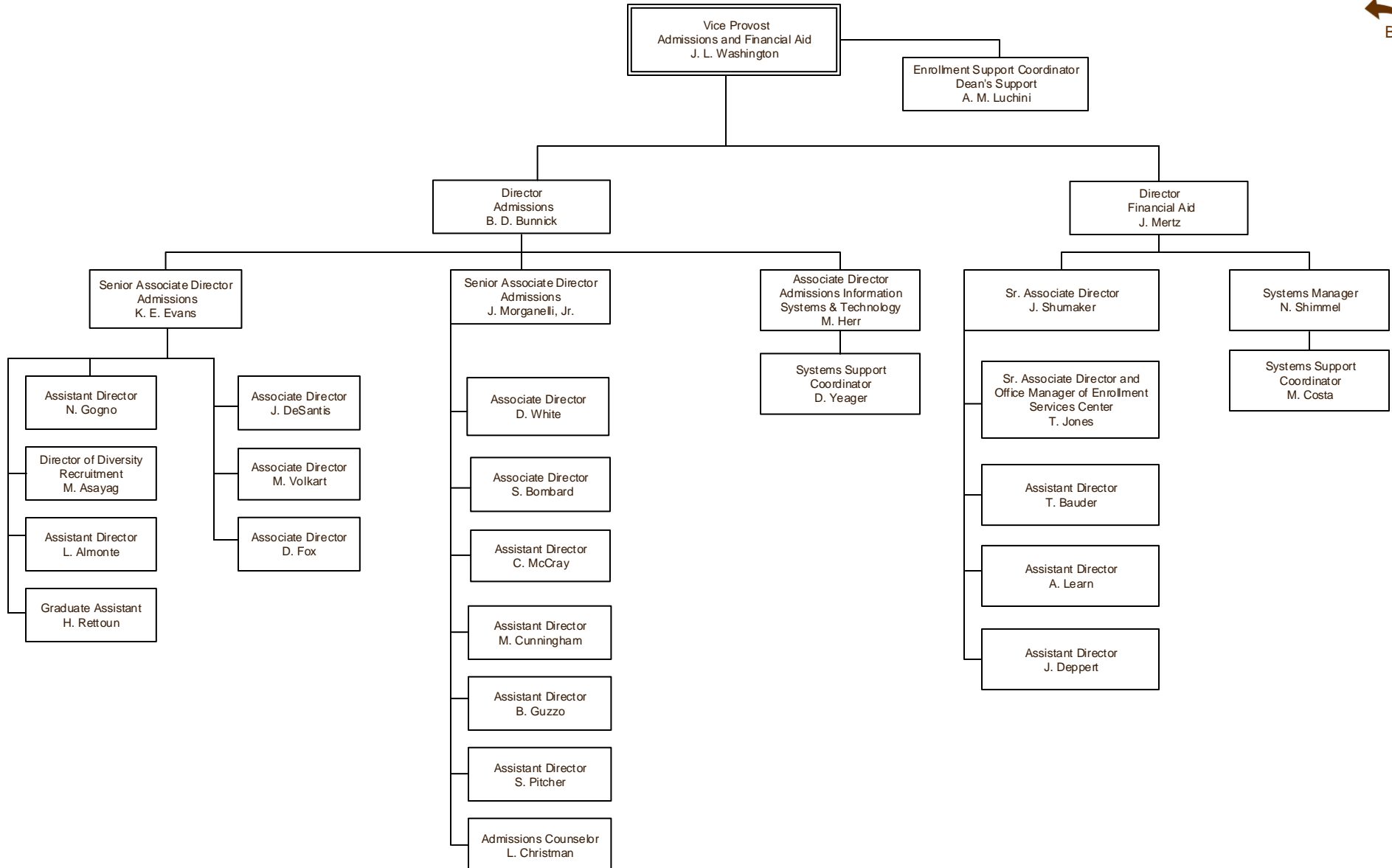


..... Indicates dual reporting line with another stem
 ————— Indicates direct report

Organization Chart

Admissions & Financial Aid

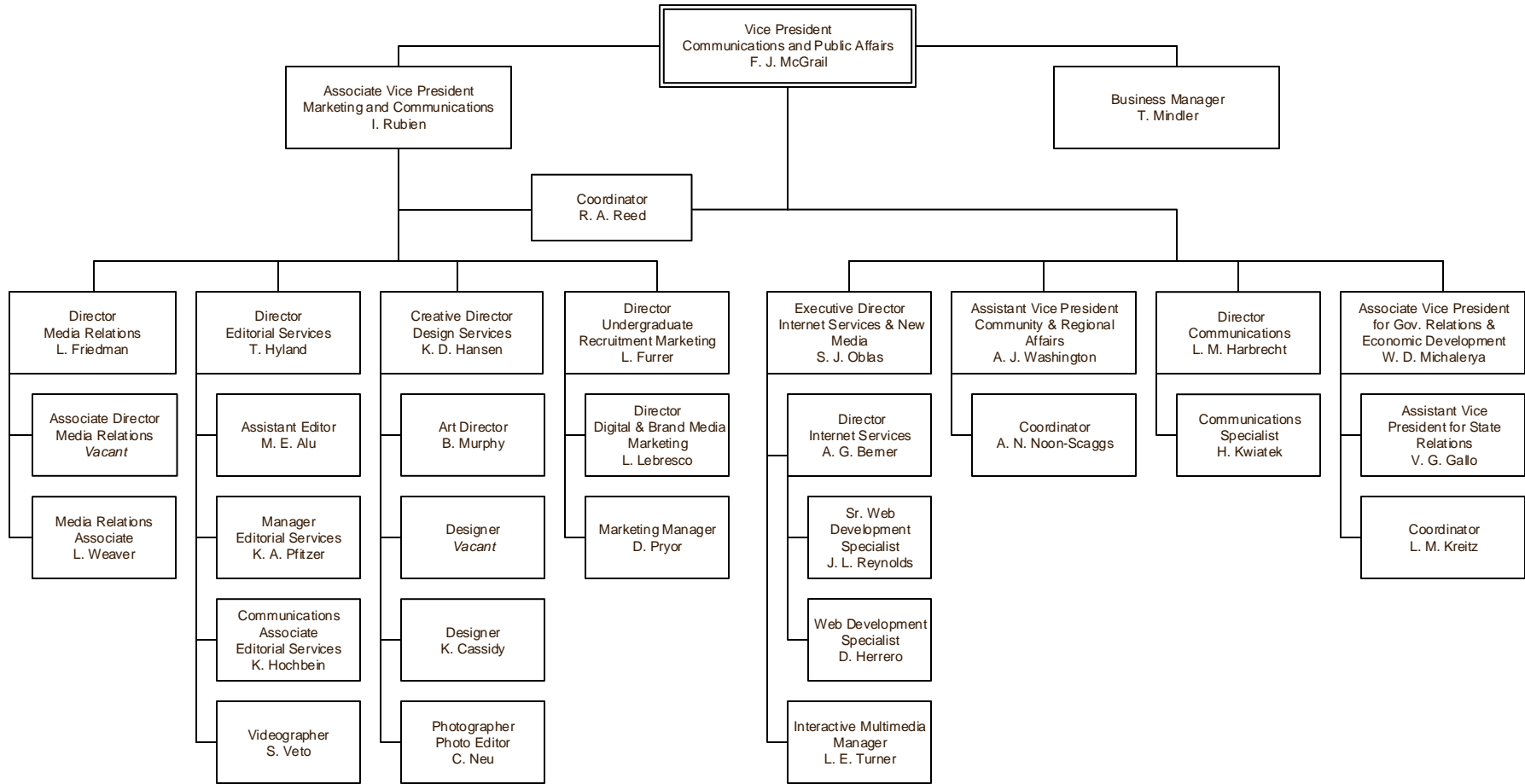
Last Update:
August 2, 2016



Organization Chart

Communications and Public Affairs

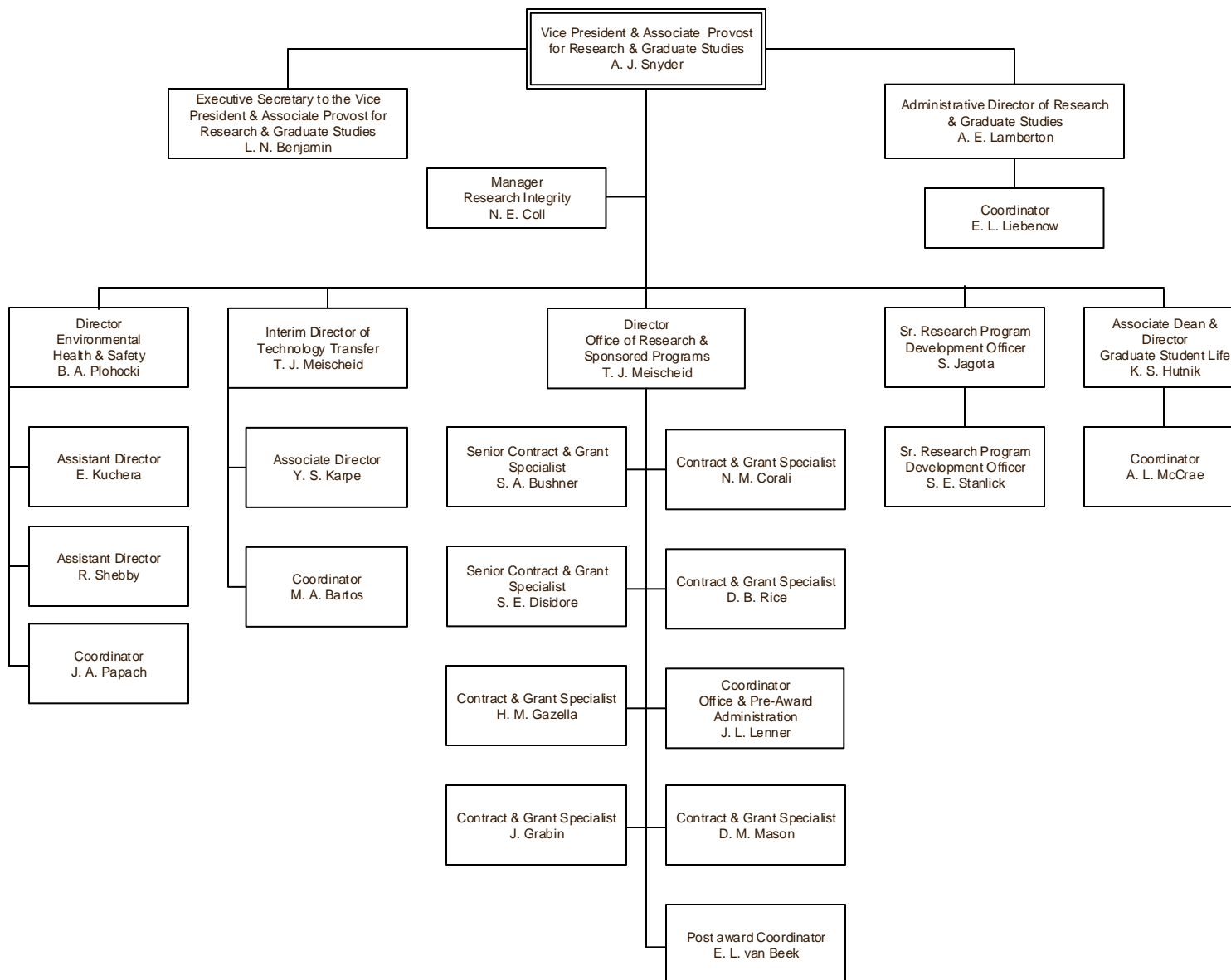
Last Update:
August 2, 2016



Organization Chart

Office of the Vice President & Associate Provost for Research & Graduate Studies

Last Update:
August 2, 2016



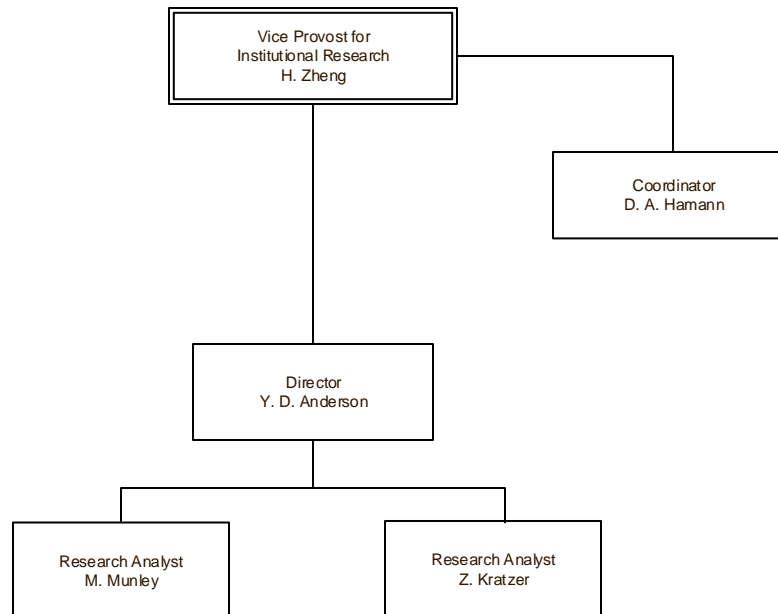
----- Indicates dual reporting line with another stem

———— Indicates direct report

Organization Chart

Office of Institutional Research

Last Update:
August 2, 2016

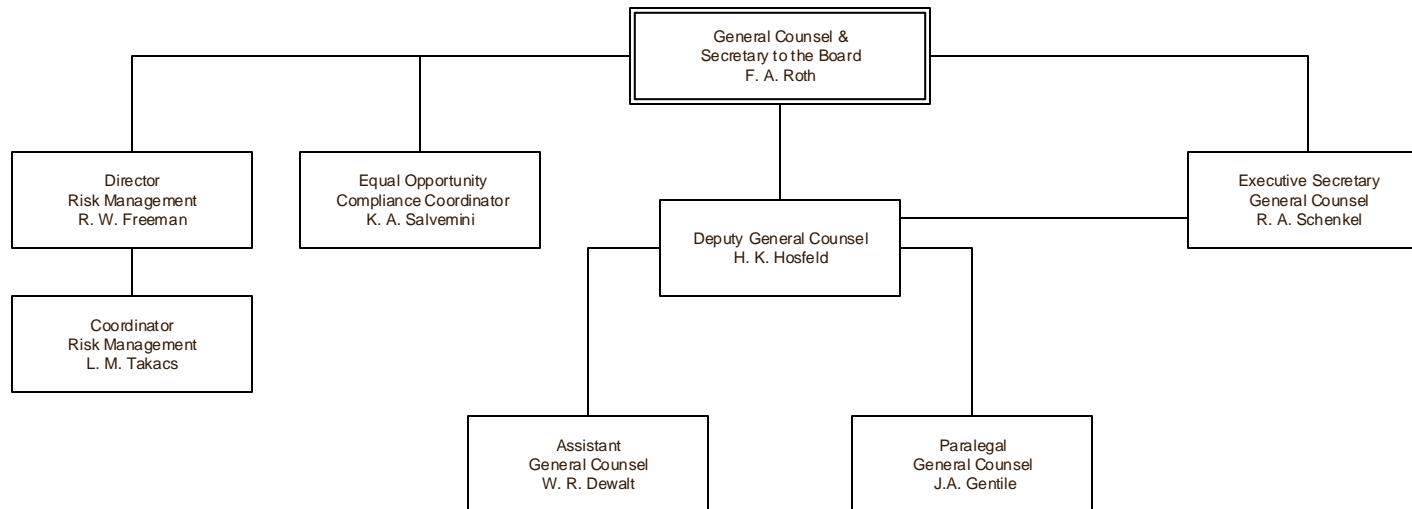


Organization Chart

General Counsel

Last Update:
August 2, 2016

 Back



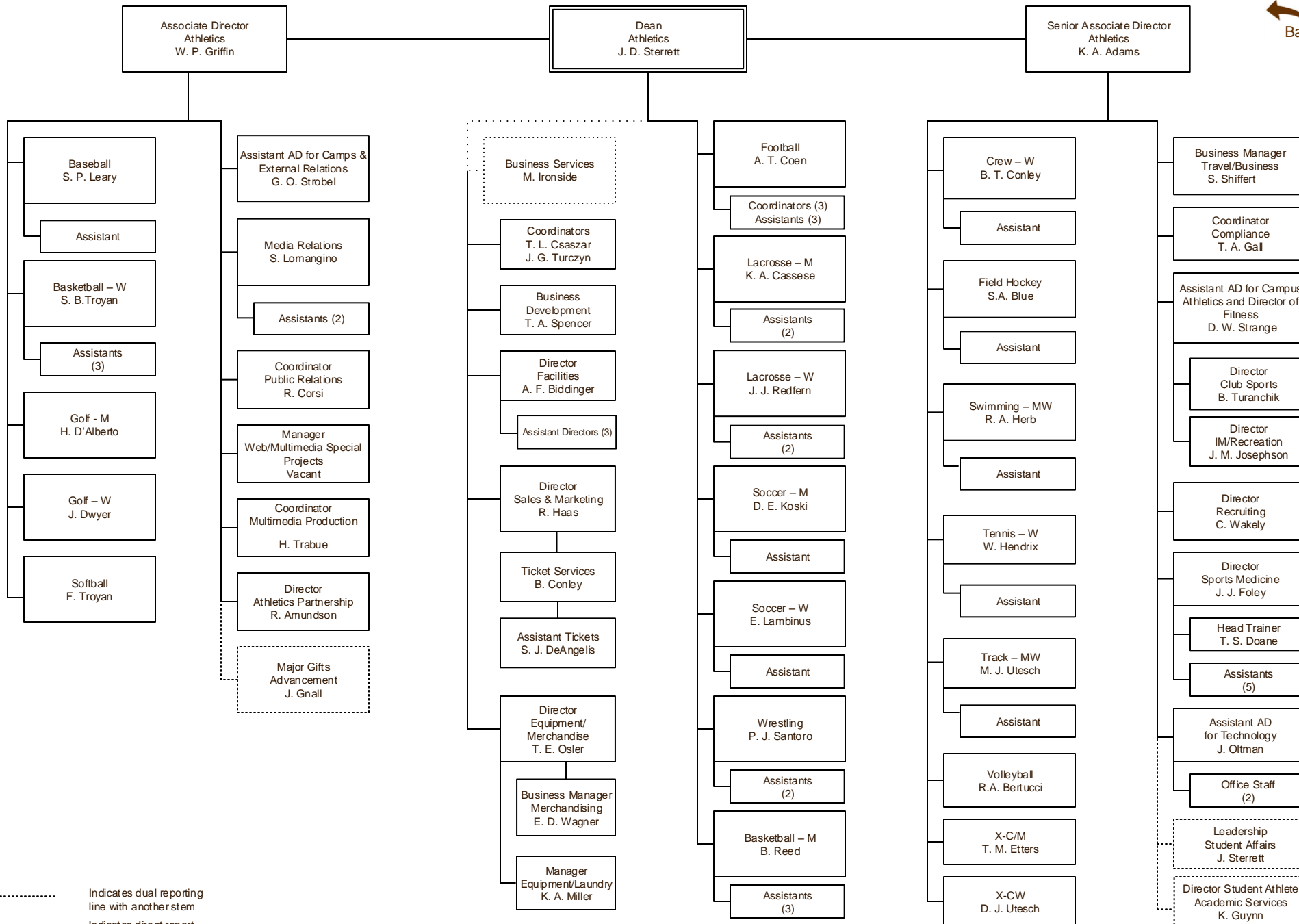
— Indicates direct report

Organization Chart

Athletics

Last Update:

August 2, 2016

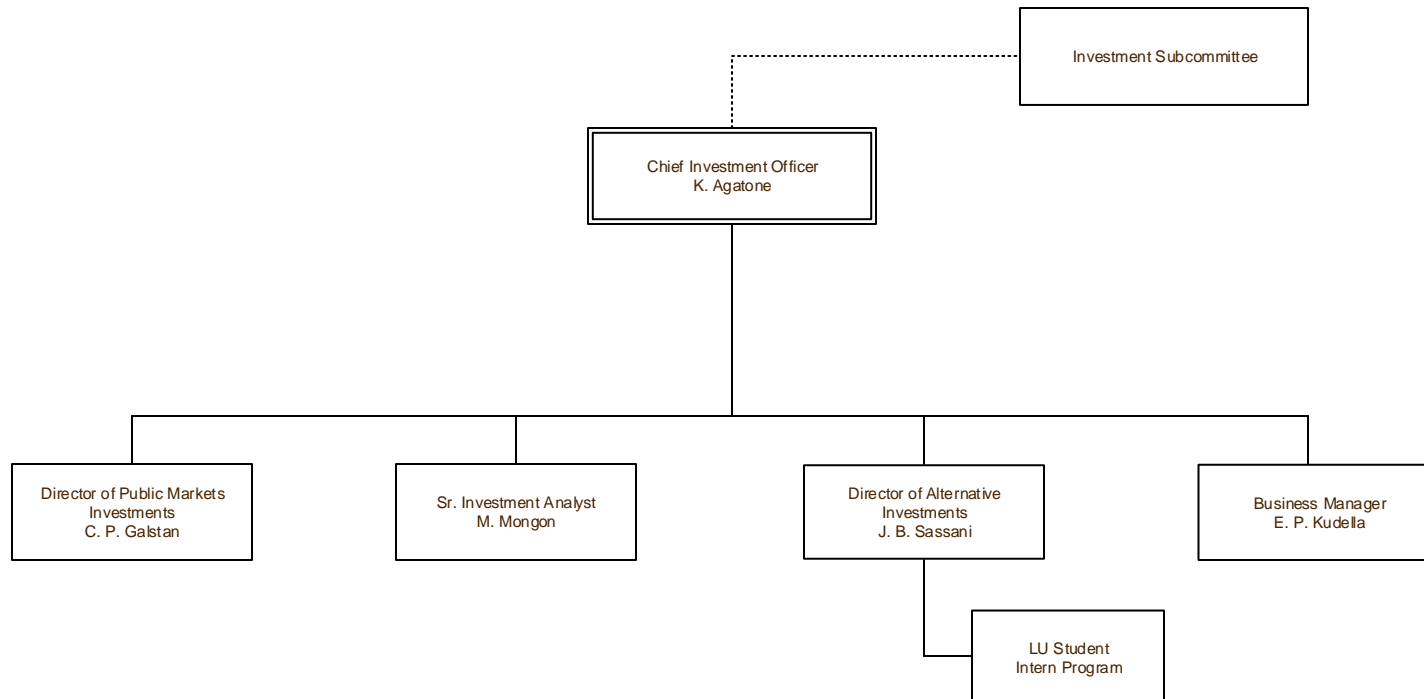


Organization Chart

Investment Office

Last Update:
August 2, 2016

 Back



----- Indicates dual reporting line with another stem

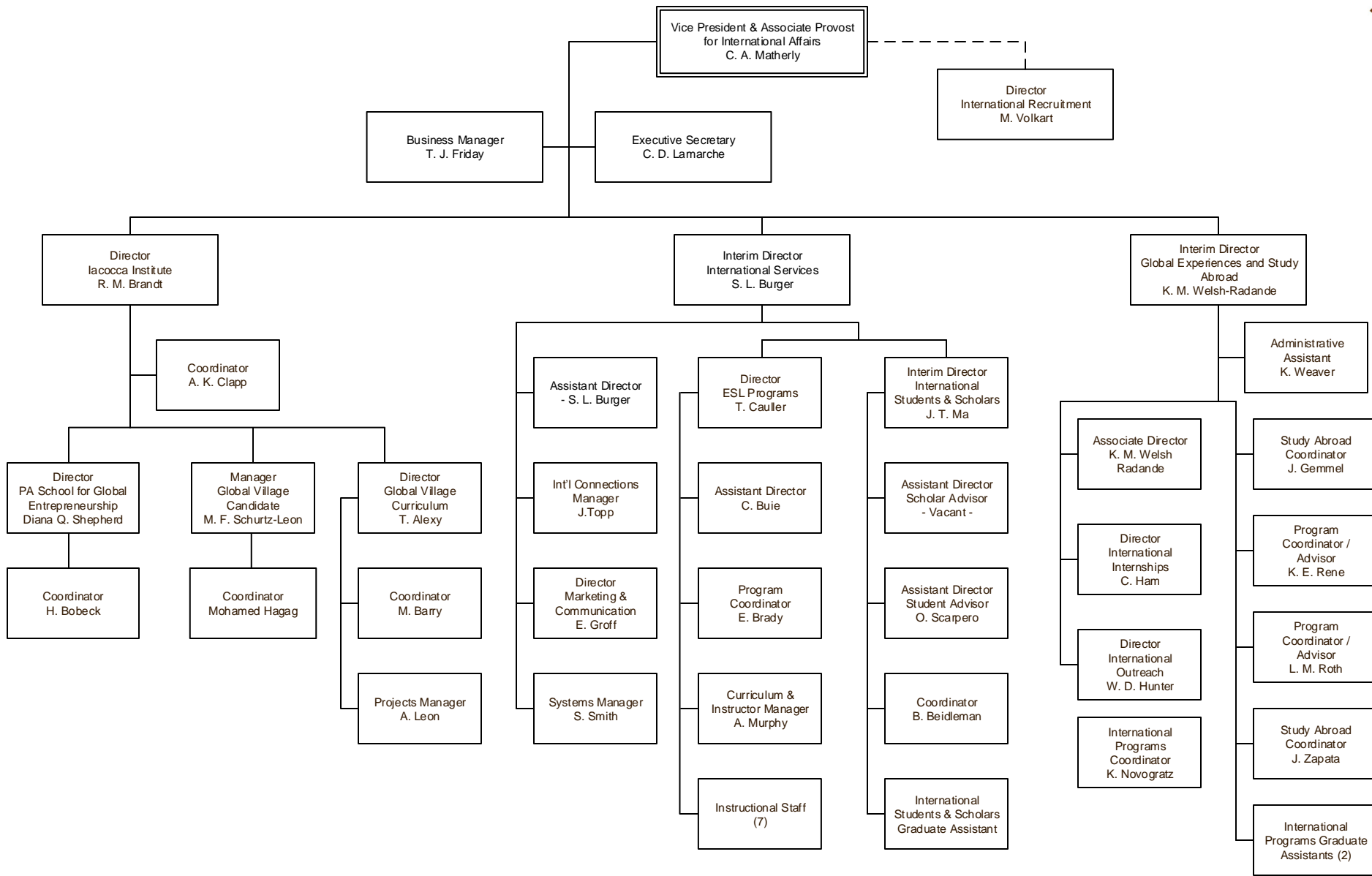
———— Indicates direct report

Organization Chart

International Affairs

Last Update:

August 2, 2016



..... Indicates dual reporting line with another stem

———— Indicates direct report

Organization Chart

University Registrar

Last Update:
August 2, 2016

