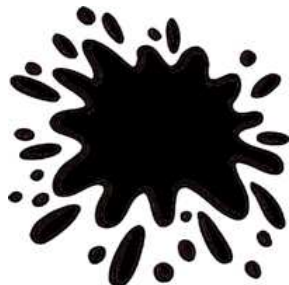




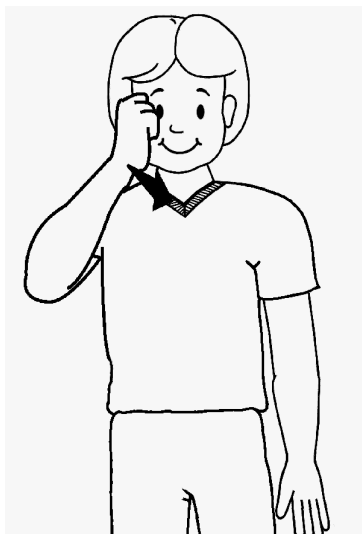
Colours



Black



How to Sign it :
Stroke fingers of fist forward
along side of face.



Blue



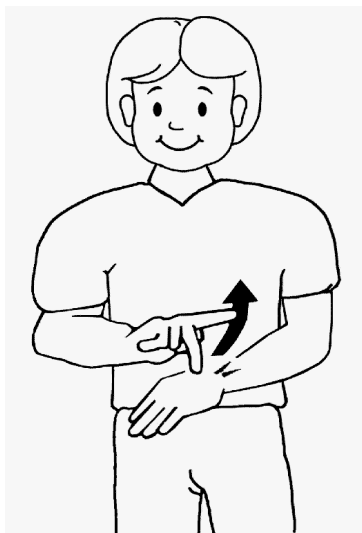
Not commonly used in : ACT.
NSW. SA.



Blue



Not commonly used in : QLD.
NT. TAS. VIC. WA.



Brown



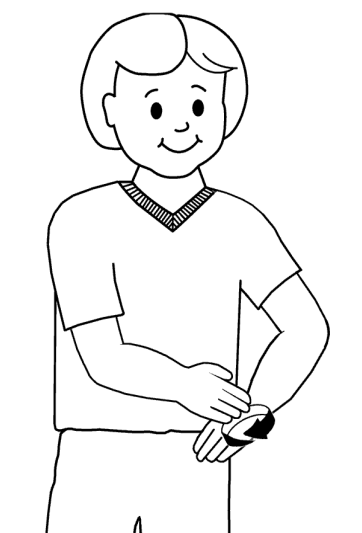
How to Sign it :
Hold hand with fingers and
thumb spread, palm toward
chin. Move the fingers together
as the hand moves out and
down from face
Not commonly used in : ACT.
NSW. SA.



Brown

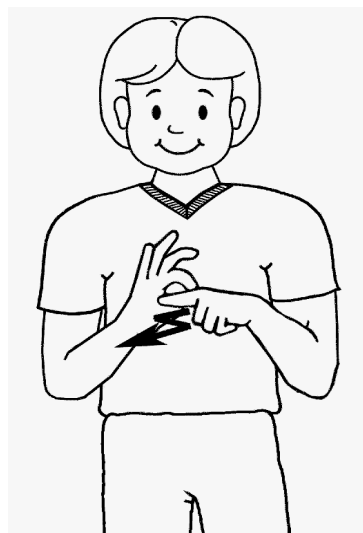


Not commonly used in : QLD.
NT. TAS. VIC. WA.



Colour

How to Sign it :
Form a circle with pointer
finger and thumb. Slide
fingertips along your other
extended pointer finger, twice.



Green



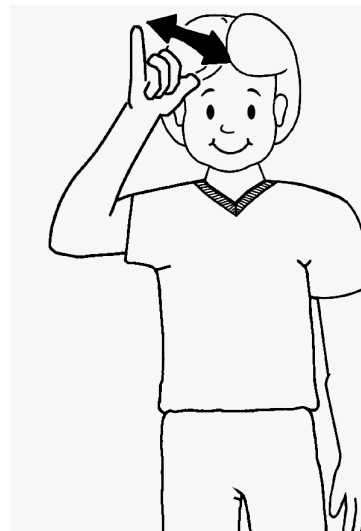
Not commonly used in : ACT.
NSW. SA.



Green



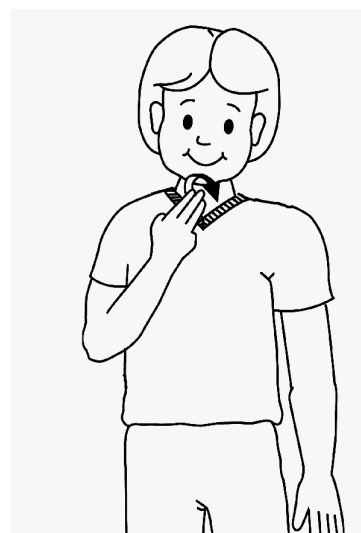
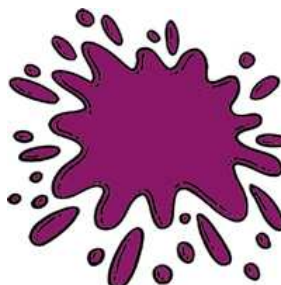
Not commonly used in : QLD.
NT. TAS. VIC. WA.



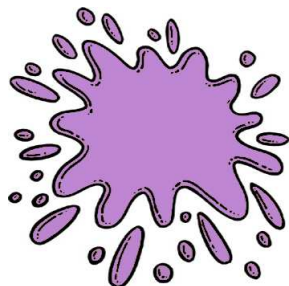
Grey



Maroon



Mauve



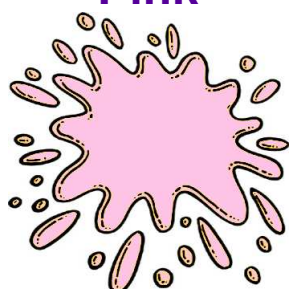
Orange



How to Sign it :
Bunched hand opens and
closes near mouth, as if
squeezing



Pink



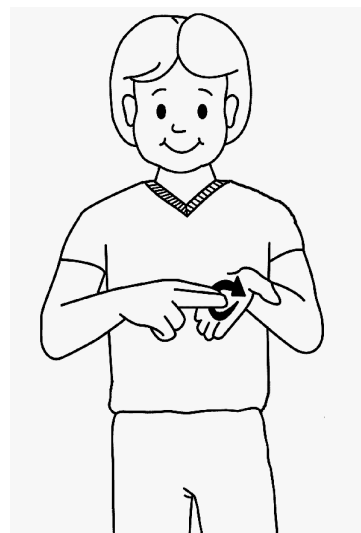
How to Sign it :
Brush pointer finger backwards on cheek, with palm facing forward.



Purple



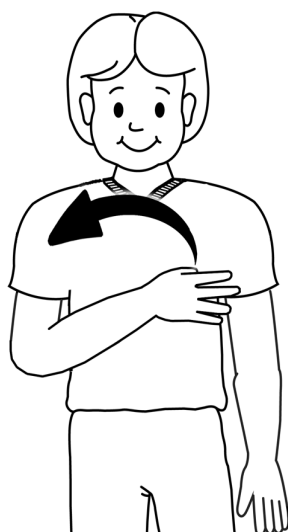
How to Sign it :
With pointer and middle fingers extended together, form a circle with fingertips in palm of other hand.



Rainbow



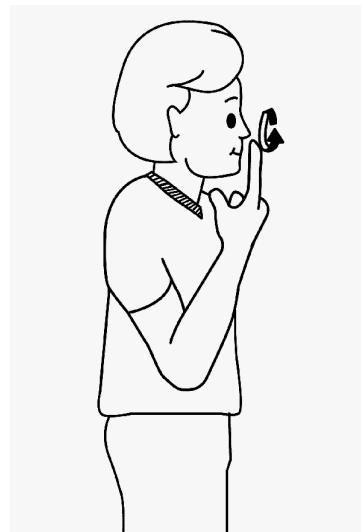
How to Sign it :
With fingers slightly spread, and palm facing you, form an arc with hand from one side to the other.



Red



Not commonly used in :
NSW.



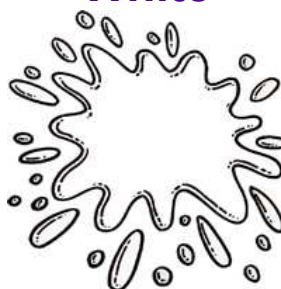
Red



Not commonly used in : QLD.
NT. TAS. VIC. WA.



White



How to Sign it :
Form a circle with pointer finger and thumb at neck, other fingers extended, rock hand forward twice.



Yellow



How to Sign it :

With pointer finger and thumb touching at tips, place hand at temple and swivel hand forward twice.

