



Universitat
de les Illes Balears

561614-EPP-1-2015-1-ES-EPPKA2-CBHE-JP

Information Technology Governance for Tunisian Universities (ITG4TU)

Kick-Off Meeting

**20-21-22th January 2016, University of Balearic Islands
(Palma de Mallorca), Spain**



Universitat
de les Illes Balears



UNIVERSITÉ DE GABÈS
University of Gabès
جامعة قابس



جامعة منوبة
Université de la Manouba



**UNIVERSITÉ DE
TUNIS EL MANAR**

MEETING AGENDA

Day 1: Wednesday January 20th, 2016

Arrival of partners

Day 2: Thursday January 21th, 2016

09:00 Welcome and Introduction to the ITG4TU project – **UIB**
Mr. Ricardo Sagrera, Head of International Affairs of UIB
Dr. Carlos Juiz, University of Balearic Islands

09:30 Working Session I

- Presentation of partners – **All Partners**
- Presentation of the Project Management Plan – **UIB**
- Discussion (questions and answers)

11:00 Coffee Break

11:30 Working Session II

- European Agency video-conference
Ms. Carla Giulietti, Education, Audiovisual and Culture Executive Agency
- Project collaboration procedures – **UIB, University of Gabes**
- Definition of tasks and discussion of Work Packages – **UIB, Østfold University College**

14:00 Business Lunch

15:00 Working Session III

- Plan and programming of work to be done – **UIB, Østfold University College**
- Plan of actions for the Initial training Researchers – **UIB**
- Plan of actions for the Initial training Managers – **UIB, Østfold University College**

17:00 Closing of the session

20:00 Dinner

Day 3: Friday January 22th, 2016

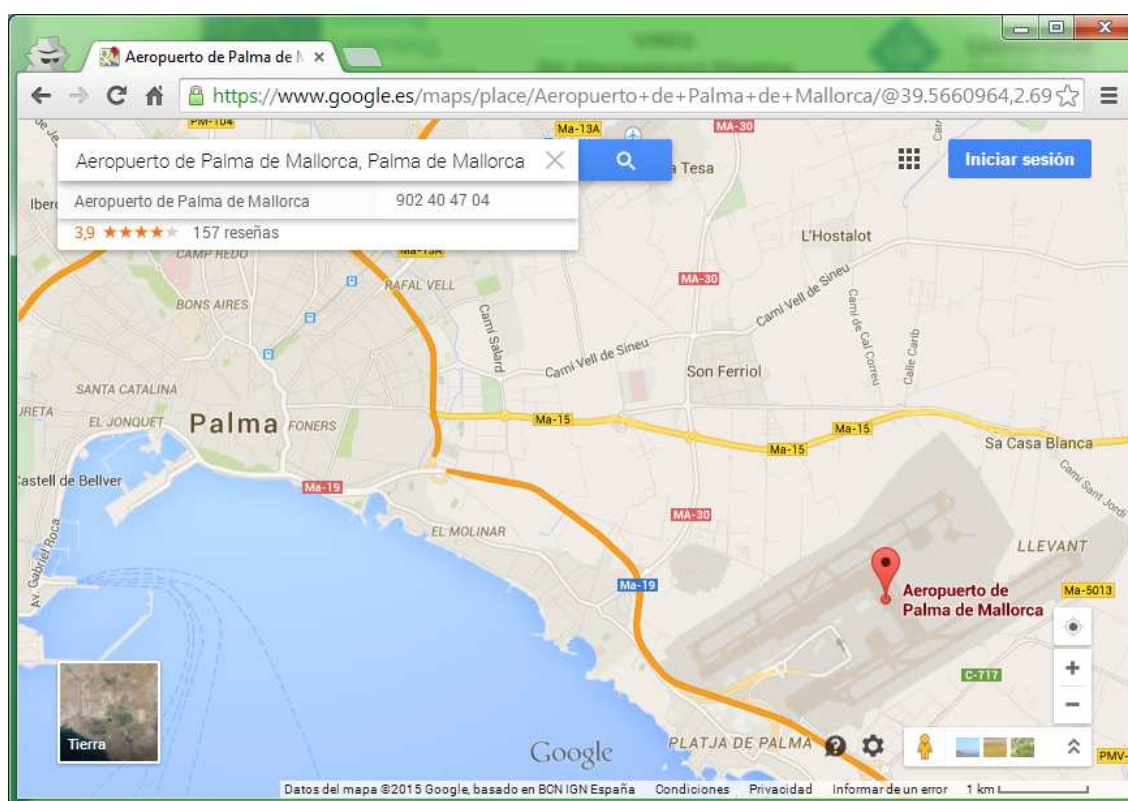
9:00 Bilateral meetings

17:00 Closing of the session

- Final remarks and comments.
- Next meeting: plan of action until next meeting

AEROPORT AND TRANSPORTS

[Palma de Mallorca Airport \(PMI\)](#): located 8 km from the city, is the gateway for the millions of tourists who visit the island. Airport traffic is primarily international and reaches its greatest levels during the summer season. There are also numerous connections to the mainland.



1. Public transport:

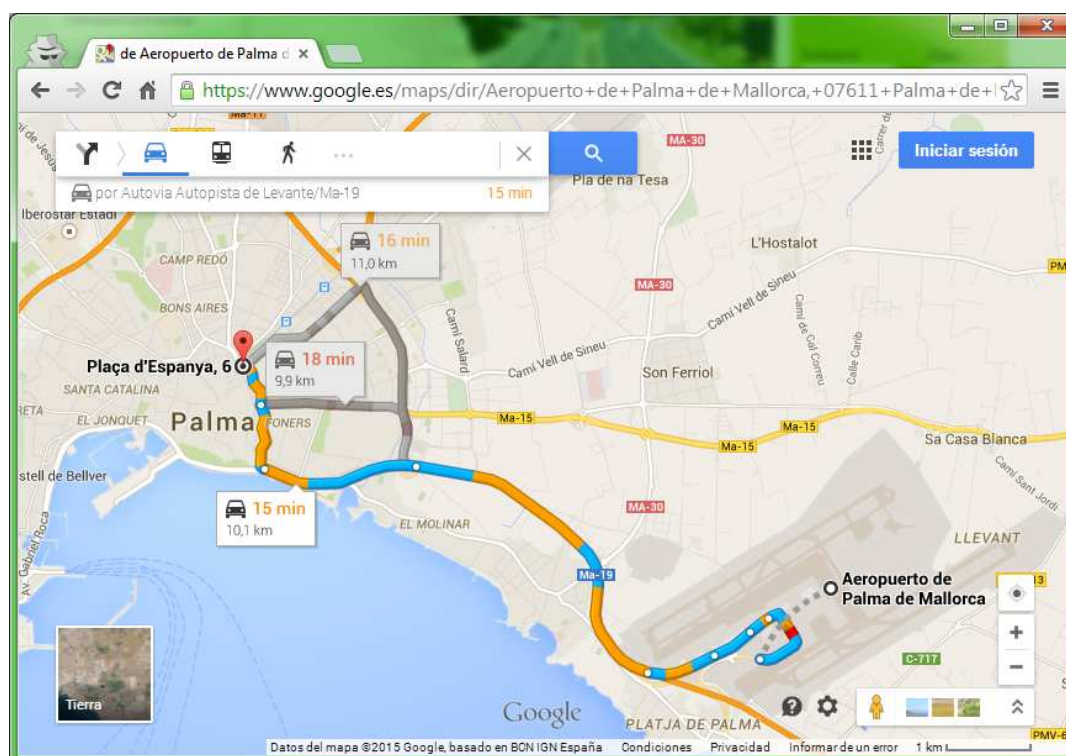
- Route 1 *Airport-City-Port*: Line 1 connects the airport with the city's main points of tourist interest and the seafront promenade.

Route 1 Airport-City-Port	
Stops at the airport:	Terminal. Floor 0. Arrivals Terminal. Floor 2. Departures
Tariffs:	One-way ticket: 3 Euro (The maximum change available within the bus is 10 €)
Opening hours:	Winter (from 1 November to 30 April): To the city centre : from 6:00 to 1:10. To the airport : from 5:30 to 1:00.
Frequency:	Every 15 minutes, approximately.
Contact:	Information telephone: +34 971 214 444
Links of interest:	Palma Municipal Transport Company Diagram of line 1 Airport-City-Port

- Route 2 *S'Arenal-Airport*: Line 21 connects the airport with several hotels along Palma beach.

Route 2 S'Arenal-Airport	
Stops at the airport:	Terminal. Floor 0. Arrivals Terminal. Floor 2. Departures
Tariffs:	One-way ticket: 3 Euro (The maximum change available within the bus is 10 €)
Opening hours:	Winter (from 1 November to 30 April): To Palma beach : from 7:00 to 22:10. To the airport : from 7:00 to 21:30.
Frequency:	Every 30 minutes, approximately.
Contact:	Information telephone: +34 971 214 444
Links of interest:	Palma Municipal Transport Company Diagram of line 21 S'Arenal-Airport

- Road access: MA19 road.



- Taxi: Always take a taxi from the signed taxi rank at the terminal and avoid taxi drivers offering services from other points. Demand a bill in the case of any complaint.

Taxi	
Stops at the airport:	Terminal. Floor 0. Arrivals
Tariffs:	15 – 20 € approximately.
Contact:	Information telephone: +34 971 401 414

FEATURED HOTELS IN PALMA

- 1) **UR Palacio Avenida **** →42, Alexandre Rosselló Avenue, Palma, Spain.**
 - a) € 70 SINGLE // € 71 DOUBLE
 - b) LCD satellite TV, Free WI-FI, minibar, free lockbox.
 - c) <http://www.urhotels.com/en/hotel-ur-palacio-avenida-majorca.html>
- 2) **AC Hotel Ciutat de Palma **** →3, Puente Square, Palma, Balearic Islands, Spain.**
 - a) € 85 GUEST // € 129 SUPERIOR
 - b) Safety-box at the front desk, 24-hour room service, laundry, free Wi-Fi Internet in common areas, a restaurant, an open-air terrace, both smoking and non-smoking rooms.
 - c) <http://www.marriott.com/hotels/travel/pmima-ac-hotel-ciutat-de-palma/>
- 3) **Almudaina **** →9, Jaime III Avenue, Palma, Balearic Islands, Spain.**
 - a) € 76,00 SINGLE // € 81,00 DOUBLE // € 115 SUPERIOR
 - b) Flat television, WIFI Internet, magnetic lock.
 - c) <https://www.hotelalmudaina.com/?lang=en>
- 4) **Saratoga **** →6, Paseo Mallorca, Palma, Balearic Islands, Spain.**
 - a) € 84,15 SINGLE // 89,10 DOUBLE
 - b) Satellite TV, minibar, and free wireless high speed internet access throughout the whole hotel.
 - c) <http://www.hotelsaratoga.co.uk/>
- 5) **Meliá Palas Atenea **** →29, Gabriel Roca Avenue, Palma, Balearic Islands, Spain.**
 - a) € 85,05 SINGLE // € 97,20 PREMIUM
 - b) Safety-box, 24-hour room service, laundry, restaurant, open-air terrace, free Wi-Fi Internet.
 - c) <http://www.melia.com/en/hotels/spain/majorca/melia-palas-atenea/index.html>
- 6) **Abelux **→30, Ramon Muntaner, Palma, Balearic Islands, Spain.**
 - a) € 45 SINGLE
 - b) Familiar hotel, laundry, bar, free Wi-Fi Internet.
 - c) www.hotelabelux.es



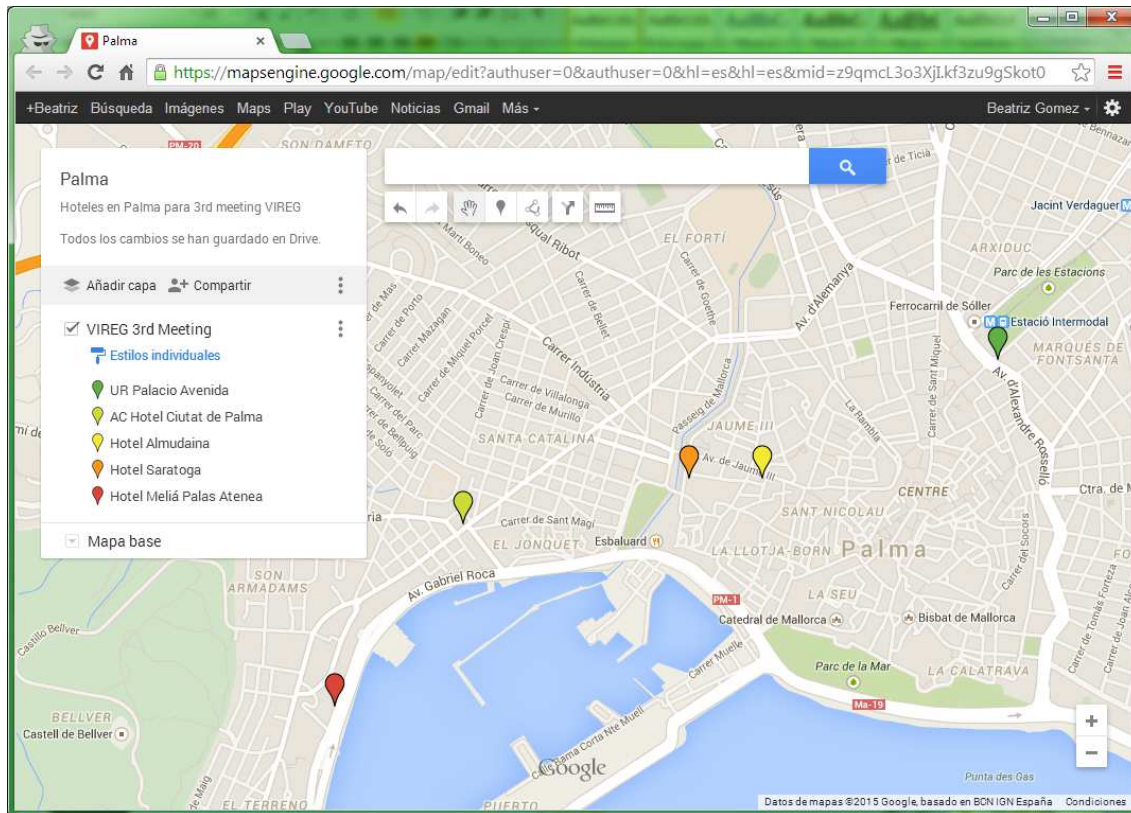
Erasmus+

Kick-Off Meeting
ITG4TU



Universitat
de les Illes Balears

The following map shows you the position of the hotels:





Erasmus+

Kick-Off Meeting
ITG4TU

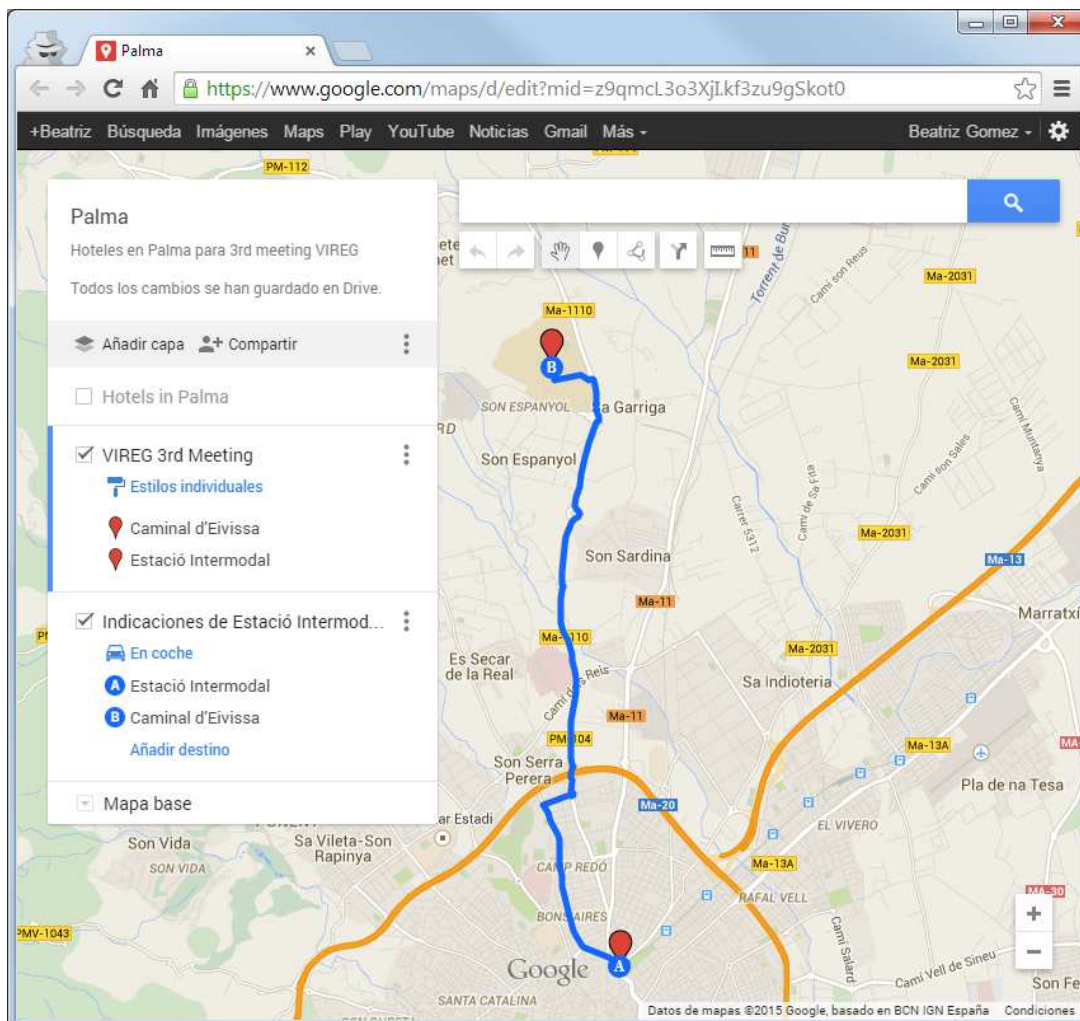


Universitat
de les Illes Balears

MEETING VENUE

The meeting venue will be at *Melchor Gaspar de Jovellanos Building* in University of Balearic Islands campus, Seminar SB01:

Melchor Gaspar de Jovellanos Building, Caminal d'Eivissa
University of Balearic Islands, Carretera de Valldemosa, 7.5km
Palma de Mallorca
Balearic Islands.



Our university is on the outskirts of the city, in a rural setting, so that access should be by vehicle:

1. Public transport:
 - Line 19 connects the city center with the university.

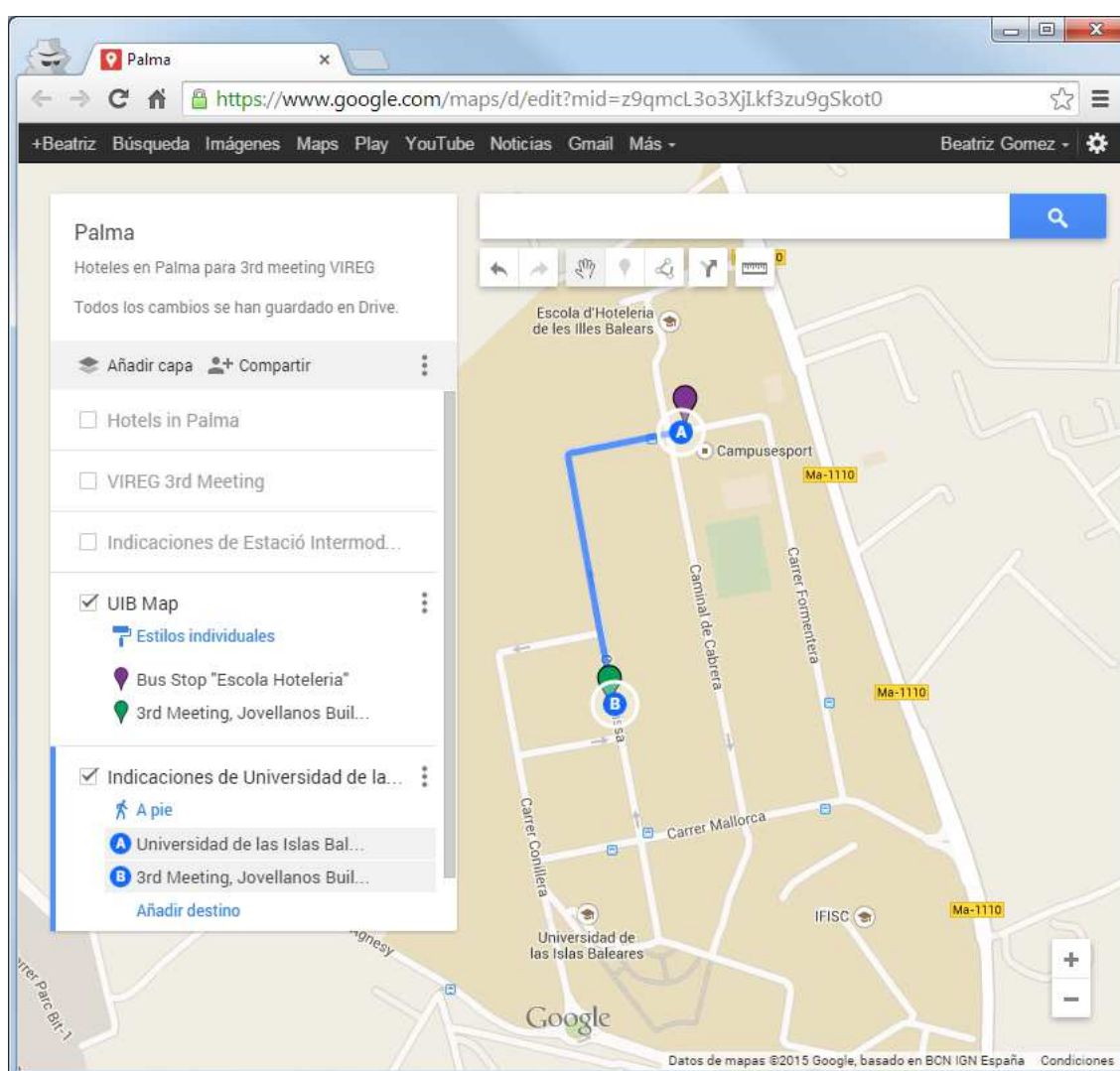
Line 19 UIB – Parc Bit

From Palma to UIB: Get on at “Plaza de España” // Stop at “Campus Esport”

From UIB to Palma: Get on at “Jovellanos” // Stop at “Joan March 5”

Opening hours:	To the UIB : from 7:00 to 21:17. To the city center : from 7:40 to 22:00.
Frequency:	Every 10 minutes, approximately.
Tariffs:	One-way ticket: 1,50 Euro (The maximum change available within the bus is 10 €)
Links of interest:	Palma Municipal Transport Company Diagram of line 19 UIB Parc - Bit

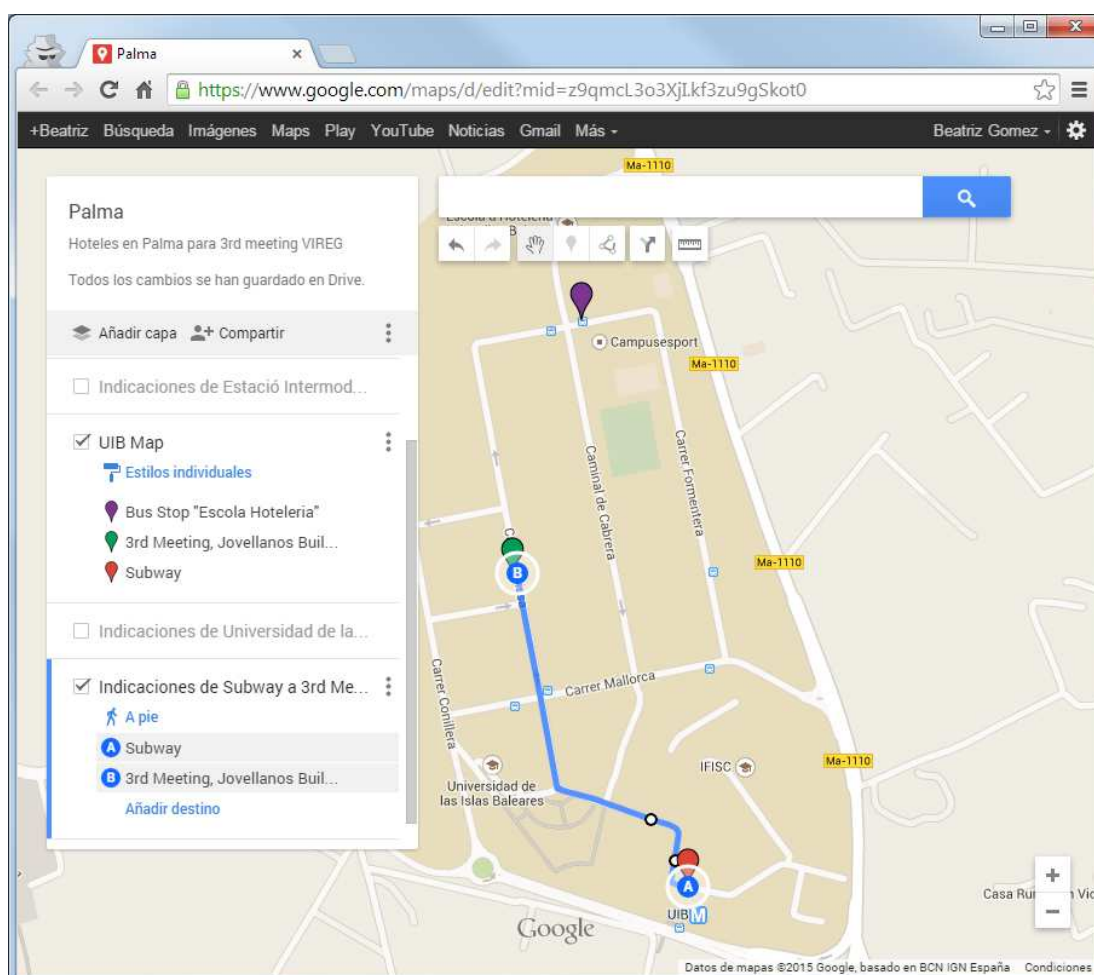
You have to get off the bus at “*Campus Esport - Residència*” station and walk to the *Melchor Gaspar de Jovellanos Building* like the map.



- Subway: Line M1 Estació Intermodal (Plaza España) – Estació UIB

Line 19 UIB – Parc Bit	
From Palma to UIB:	Get on at “Plaza de España-Estació intermodal” // Stop at “UIB”
From UIB to Palma:	Get on at “UIB” // Stop at “Plaza de España-Estació intermodal”
Opening hours:	To the UIB : from 6:35 to 21:25. To the city center : from 6:55 to 21:45.
Frequency:	Every 15 minutes, approximately.
Tariffs:	One-way ticket: 1,60 Euro
Links of interest:	Public Transport of Mallorca Company Diagram of line M1 Estació UIB

The Subway ends at the university. You have to walk to the *Melchor Gaspar de Jovellanos Building* like the map.



It is not recommended to go to the university by taxi. They almost always get lost in the campus. Nonetheless, if you really need to go by taxi, tell him the full address written above, not only the building name.