



ORGANIZATIONAL CHARTS 2016-2017

TULSA PUBLIC SCHOOLS ORGANIZATIONAL CHARTS

TABLE OF CONTENTS

	PAGE NUMBER
BOARD OF EDUCATION	1
OFFICE OF THE SUPERINTENDENT	1
❖ DEPUTY SUPERINTENDENT	2
➤ COMMUNICATIONS.....	2
▪ MEDIA RELATIONS.....	2
➤ DISTRICT PERFORMANCE.....	2
➤ ORGANIZATIONAL LEARNING AND EQUITY.....	2
❖ DATA STRATEGY AND ANALYTICS	3
❖ DESIGN AND INNOVATION	2
❖ CHIEF LEARNING OFFICER	4-6
➤ EDUCATOR EFFECTIVENESS AND PROFESSIONAL LEARNING ..	4
▪ NEW TEACHER SUPPORT.....	4
▪ PROFESSIONAL LEARNING.....	4
➤ LANGUAGE AND CULTURAL SERVICES.....	4
▪ DUAL LANGUAGE AND IMMERSION.....	4
▪ ENGLISH LANGUAGE DEVELOPMENT.....	4
▪ INDIAN EDUCATION.....	4
▪ LANGUAGE INTERPRETATION.....	4
➤ PERSONALIZED LEARNING.....	4
➤ TITLE III.....	4
TEACHING AND LEARNING	5
➤ DUAL ENROLLMENT.....	5
➤ FINE ARTS.....	5
➤ GIFTED AND TALENTED.....	5
➤ HUMANITIES.....	5
➤ MATH AND SCIENCE.....	5
➤ SECONDARY PATHWAYS.....	5
SPECIAL EDUCATION	6
❖ CHIEF OF SCHOOLS	7-15
➤ INSTRUCTIONAL LEADERSHIP DIRECTORS.....	8-14
▪ SECONDARY SCHOOL STUDENT ACTIVITIES/ATHLETICS.....	7
○ HELMZAR CHALLENGE COURSE.....	7
➤ STUDENT AND FAMILY SUPPORT SERVICES	15
▪ ALTERNATIVE PROGRAMS.....	15
▪ BEFORE AND AFTER CARE PROGRAMS.....	15
▪ CULTURE AND CLIMATE.....	15
▪ FAMILY AND COMMUNITY ENGAGEMENT.....	15
▪ GRADUATION SUCCESS.....	15
▪ HEALTH AND WELLNESS.....	15
▪ HOMELESS EDUCATION.....	15
▪ STUDENT AND FAMILY ADVOCACY.....	15
▪ STUDENT ENGAGEMENT.....	15

	PAGE NUMBER
FINANCIAL SERVICES	16-21
➤ ACCOUNTING.....	17
➤ BOND PROJECTS / ENERGY MANAGEMENT.....	16
➤ BUDGET.....	16
➤ FEDERAL PROGRAMS AND SPECIAL PROJECTS.....	18
▪ GRANT COMPLIANCE.....	18
▪ GRANT WRITER.....	18
▪ TITLE I.....	18
➤ FINANCE / TREASURER.....	19
▪ FACILITIES UTILIZATION.....	19
▪ SCHOOL ACTIVITY.....	19
➤ MATERIALS MANAGEMENT (PURCHASING).....	20
▪ MAIL SERVICES.....	20
▪ WAREHOUSE.....	20
➤ PAYROLL.....	21
❖ INFORMATION AND OPERATIONS	22-29
➤ CAMPUS POLICE AND SECURITY SERVICES.....	24
➤ CHILD NUTRITION SERVICES.....	25
➤ MAINTENANCE AND PLANT OPERATIONS.....	26-27
➤ TRANSPORTATION.....	28
➤ ENROLLMENT AND STUDENT INFORMATION.....	29
▪ DISTRICT REGISTRARS.....	28
▪ STUDENT TRANSFERS.....	28
INFORMATION TECHNOLOGY	23
➤ BUSINESS SERVICES.....	23
➤ CLIENT SERVICES.....	23
➤ INFORMATION SERVICES (APPLICATIONS).....	23
➤ OPERATIONS AND SUPPORT.....	23
➤ SERVICE DESK.....	23
❖ TALENT MANAGEMENT	30
➤ CERTIFIED TALENT.....	30
➤ COMPENSATION AND BENEFITS.....	30
➤ HUMAN RIGHTS.....	30
➤ SCHOOL TALENT MANAGEMENT.....	30
➤ SUPPORT TALENT.....	30
❖ GENERAL COUNSEL	31
➤ STAFF ATTORNEY.....	31
➤ WORKERS' COMPENSATION ATTORNEY.....	31
➤ CHARTER AND PARTNERSHIP SCHOOLS.....	31

BOARD OF EDUCATION
Wilbert Collins, Cindy Decker, Ruth Ann Fate, Shawna Keller,
Gary Percefull, Suzanne Schreiber, Lana Turner-Addison

SUPERINTENDENT
Deborah A. Gist

DEPUTY SUPERINTENDENT
Paula Shannon

**ADMINISTRATIVE SERVICES
MANAGER**
Sarah Bozone
(Shared with Deputy Superintendent)

CLERK OF THE BOARD
Cindy Hutchings

**EXECUTIVE ADMINISTRATIVE
ASSISTANT/DEPUTY CLERK OF
THE BOARD**
Michelle Reed

**DESIGN AND
INNOVATION OFFICER**
(Donor Funded)
Vacancy

**CHIEF ANALYTICS
OFFICER**
Stephen Fedore

**CHIEF LEARNING
OFFICER**
Devin Fletcher

CHIEF OF SCHOOLS
Errick Green

**CHIEF FINANCIAL
OFFICER**
Vacancy

**CHIEF INFORMATION
AND OPERATIONS
OFFICER**
Blaine Young

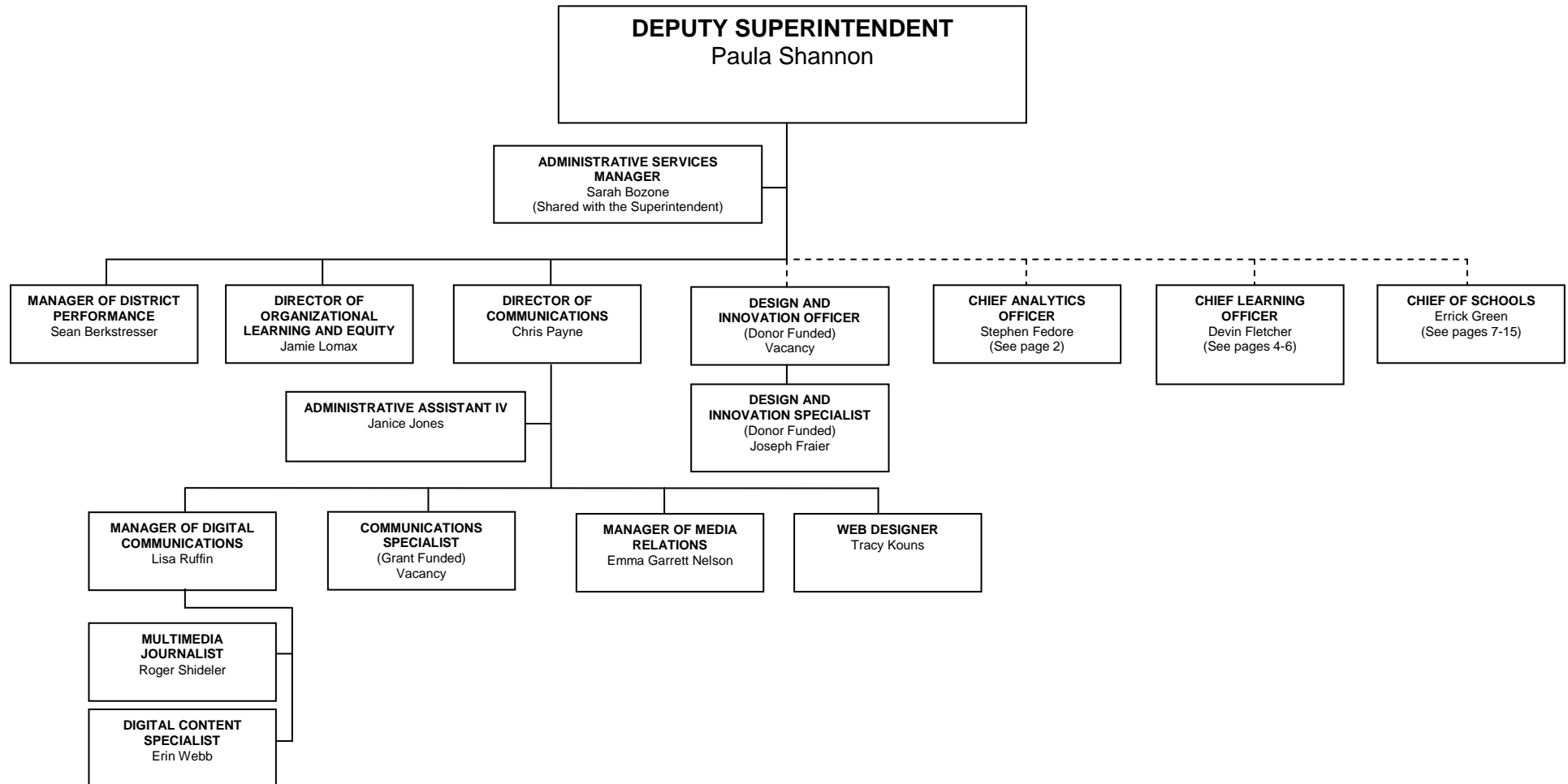
**CHIEF TALENT
OFFICER**
Talia Shaul

GENERAL COUNSEL
Jana Burk

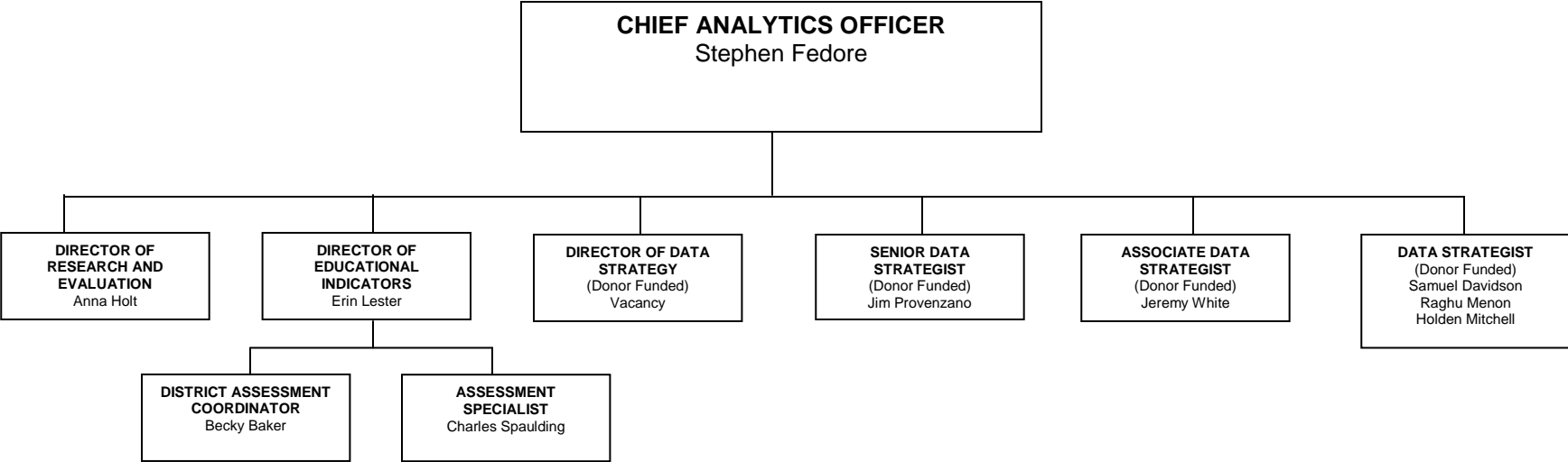
SUPER TEAM

----- Indicates shared responsibility

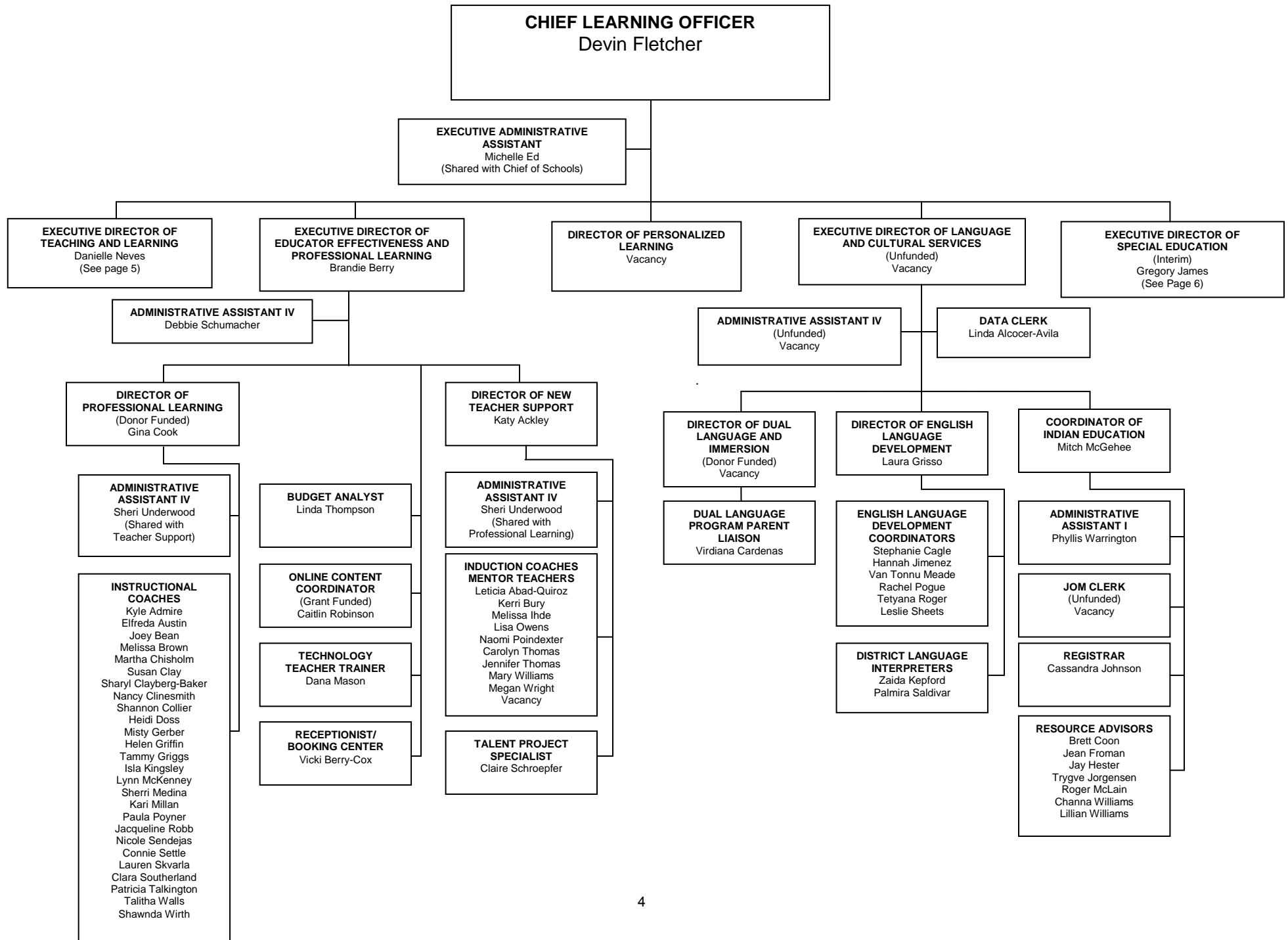
DEPUTY SUPERINTENDENT



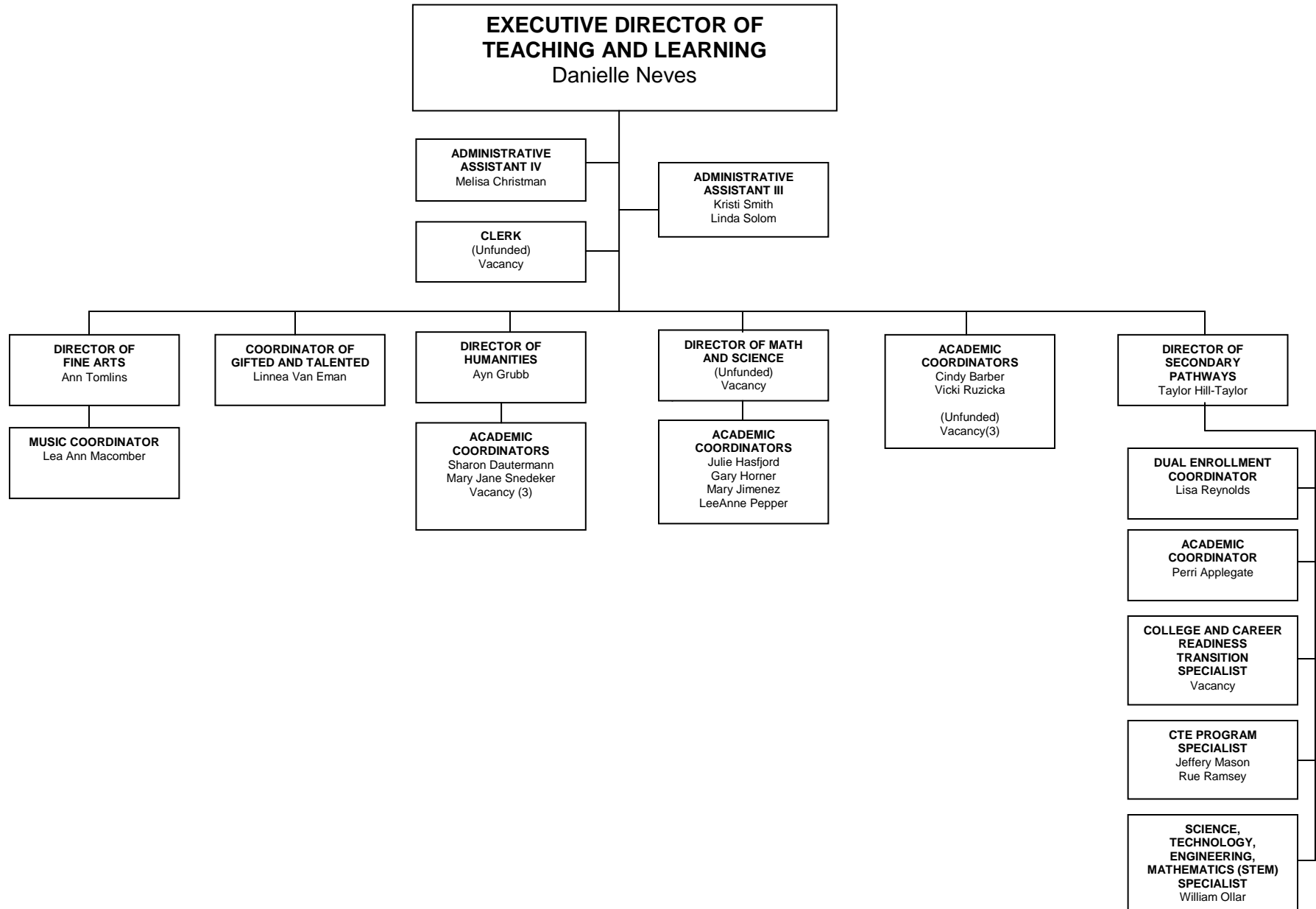
DATA STRATEGY AND ANALYTICS OFFICE



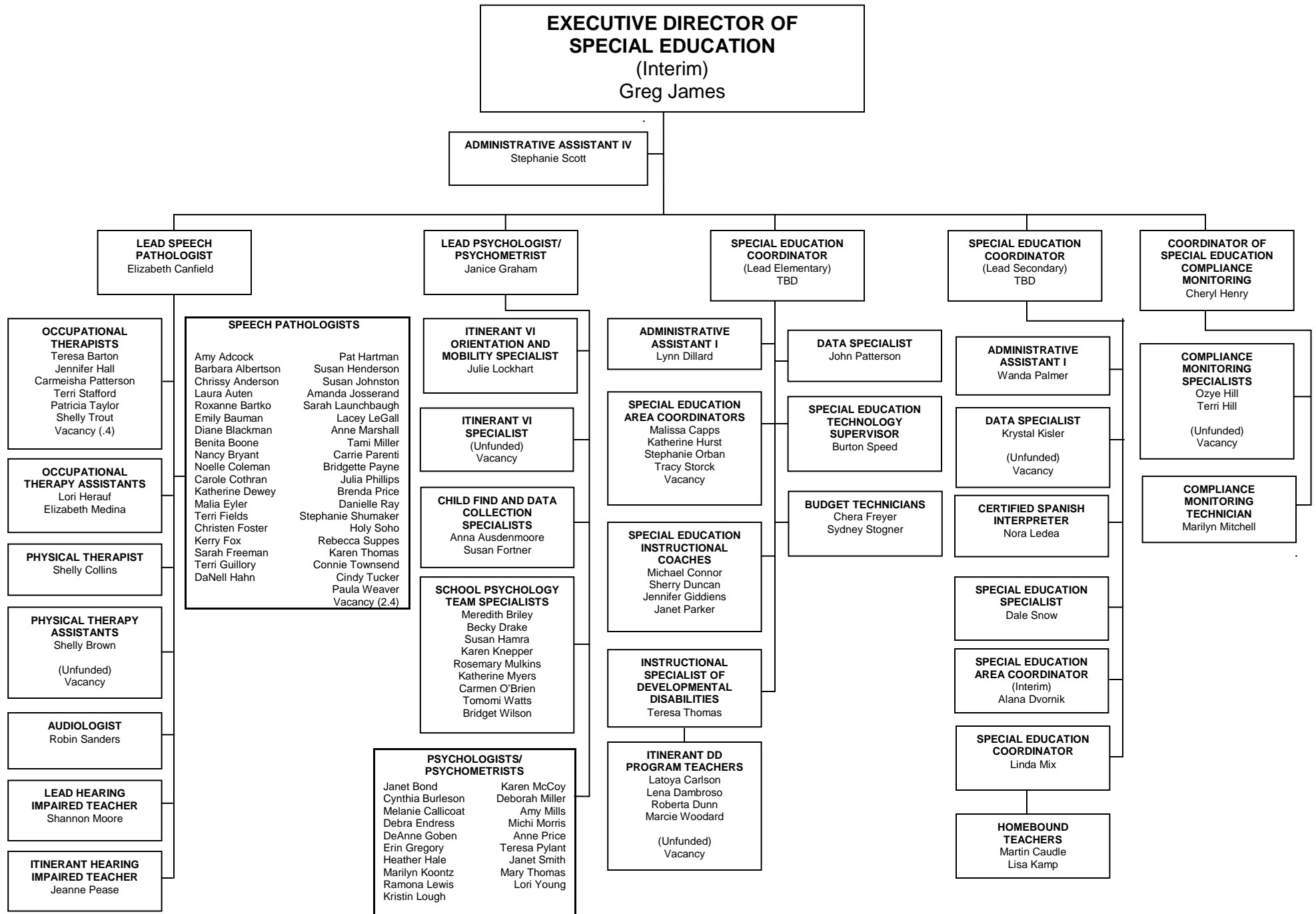
TEACHING AND LEARNING OFFICE



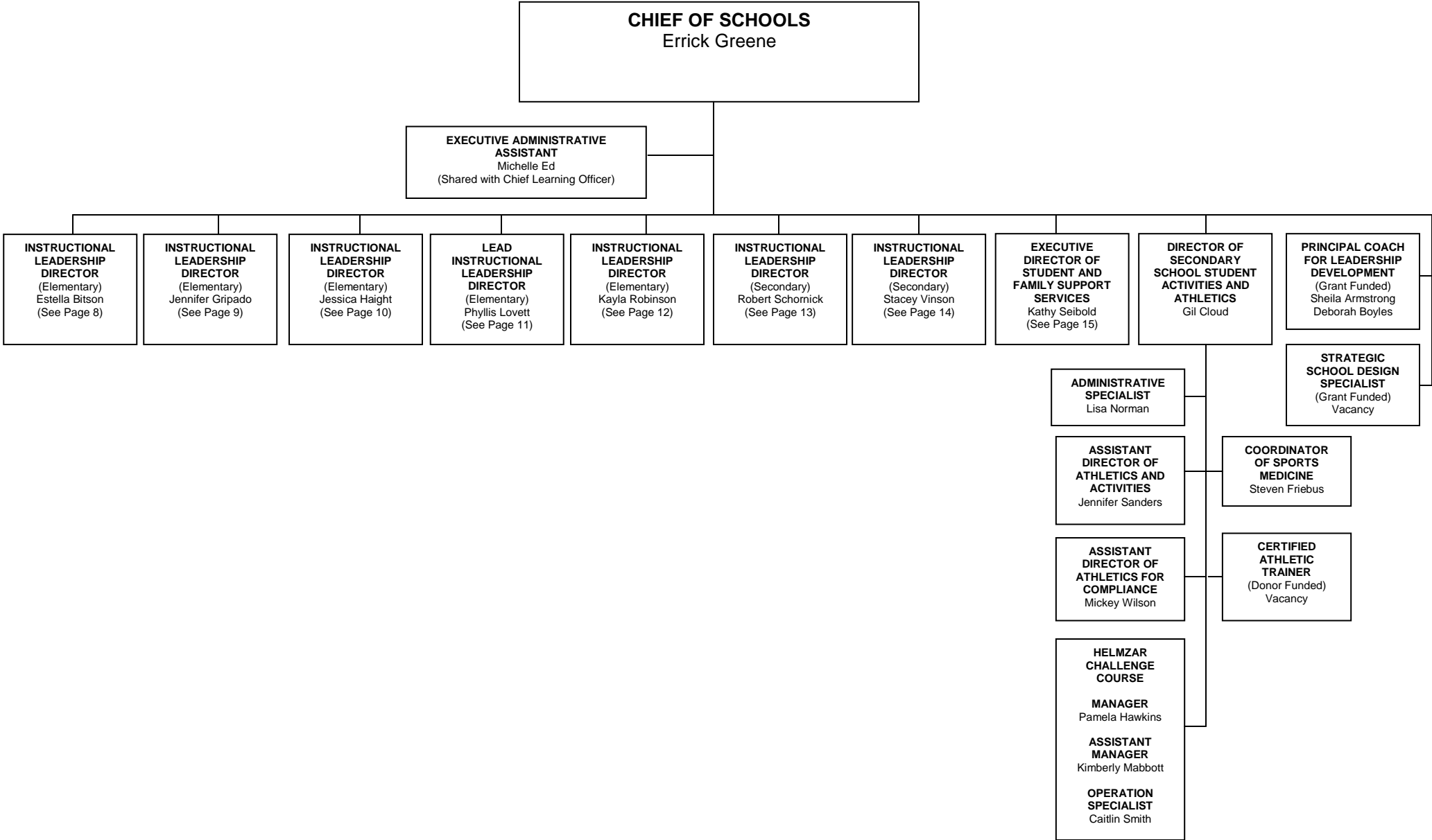
TEACHING AND LEARNING OFFICE



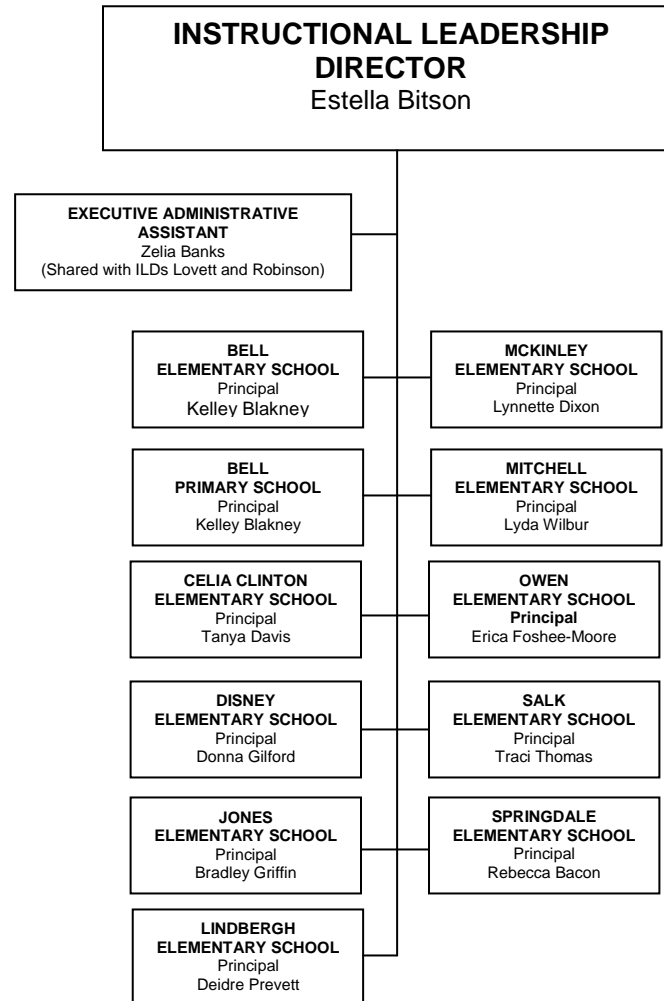
SPECIAL EDUCATION OFFICE



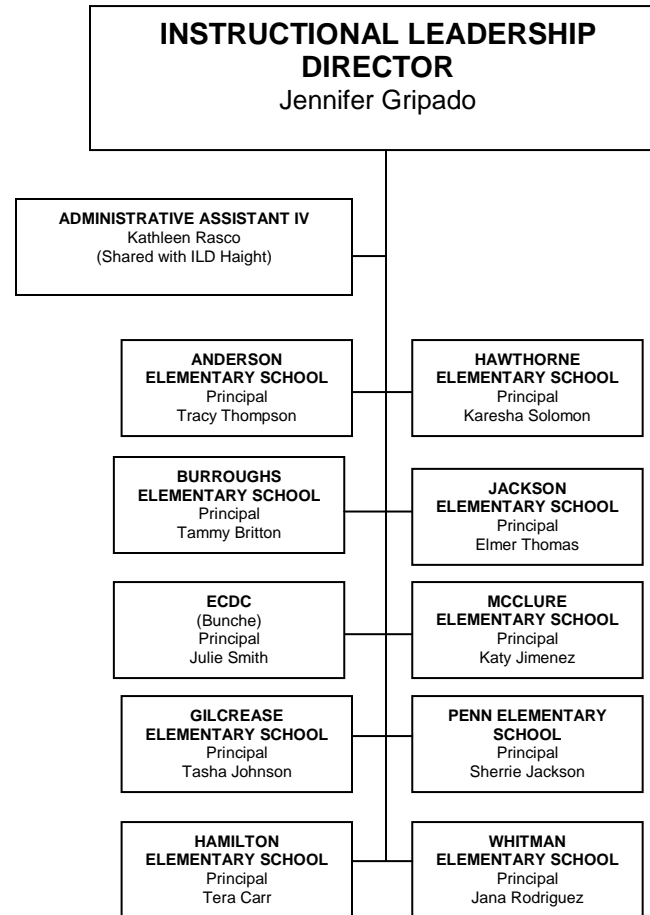
CHIEF OF SCHOOLS



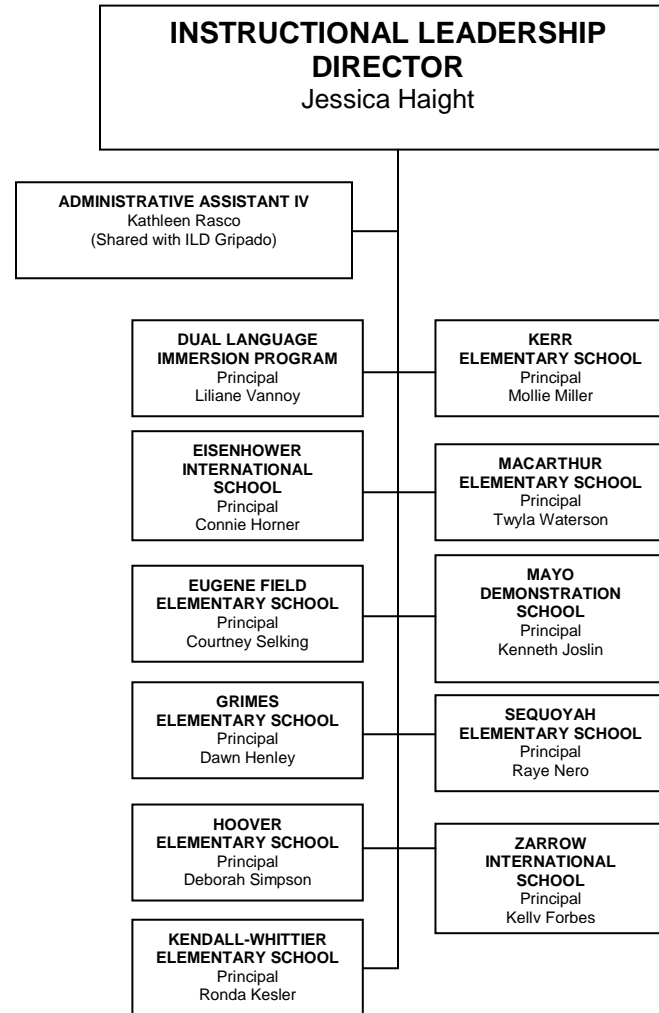
INSTRUCTIONAL LEADERSHIP



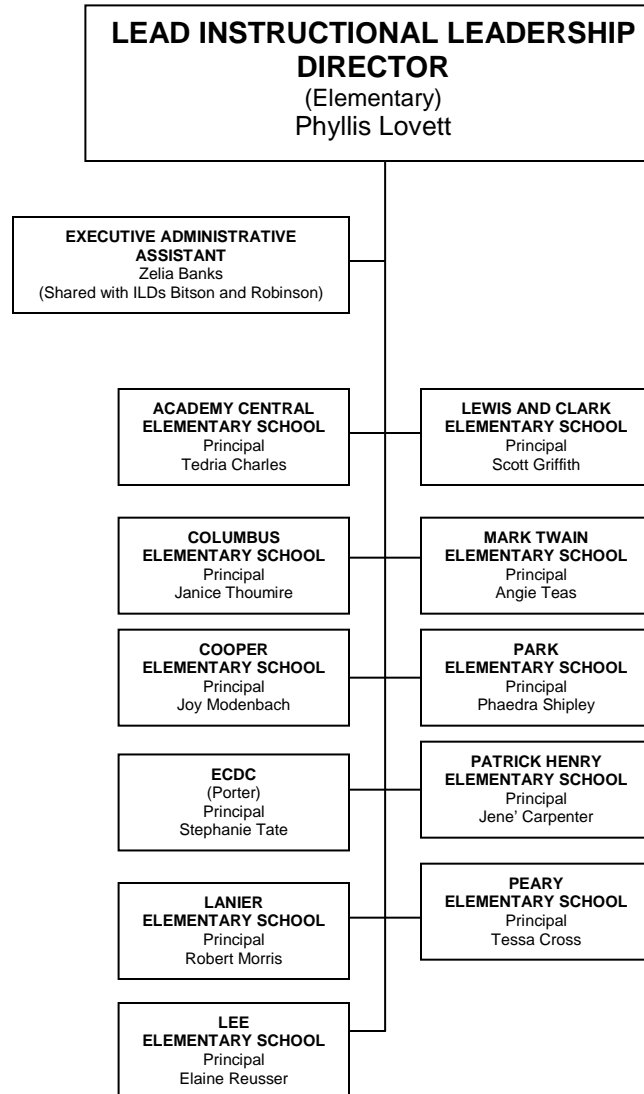
INSTRUCTIONAL LEADERSHIP



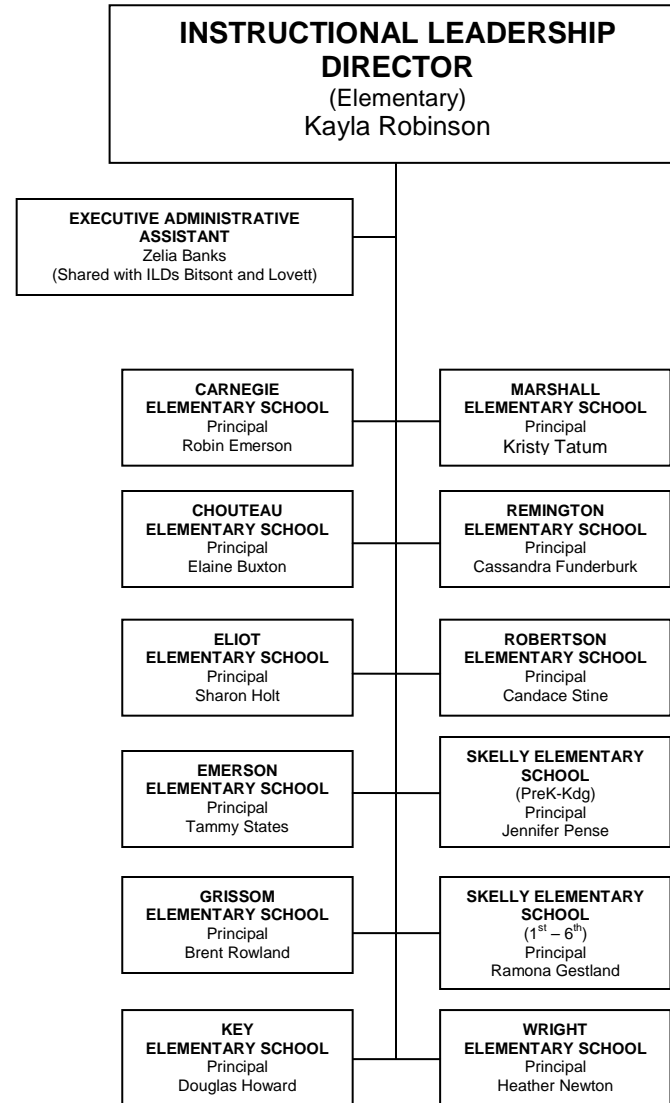
INSTRUCTIONAL LEADERSHIP



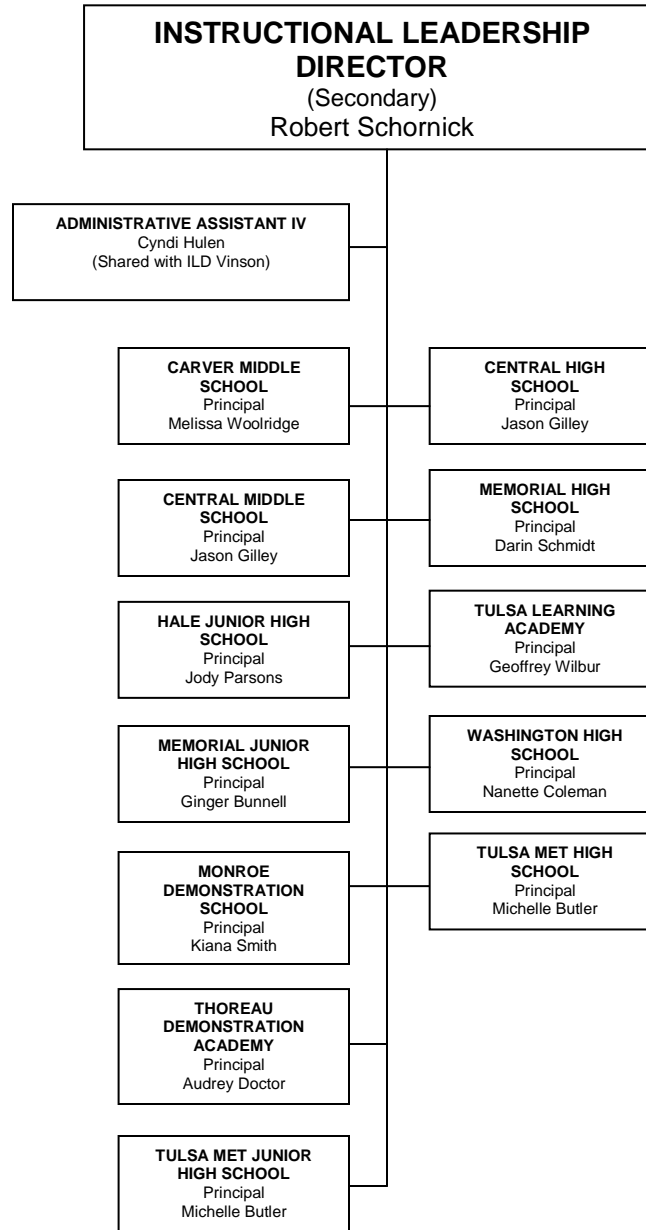
INSTRUCTIONAL LEADERSHIP



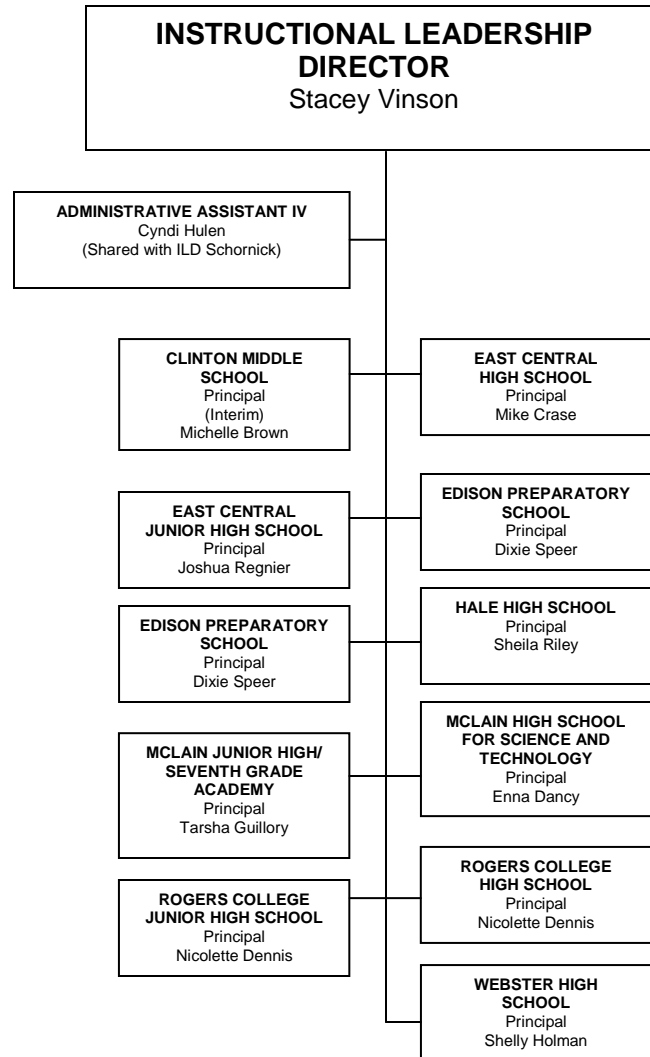
INSTRUCTIONAL LEADERSHIP



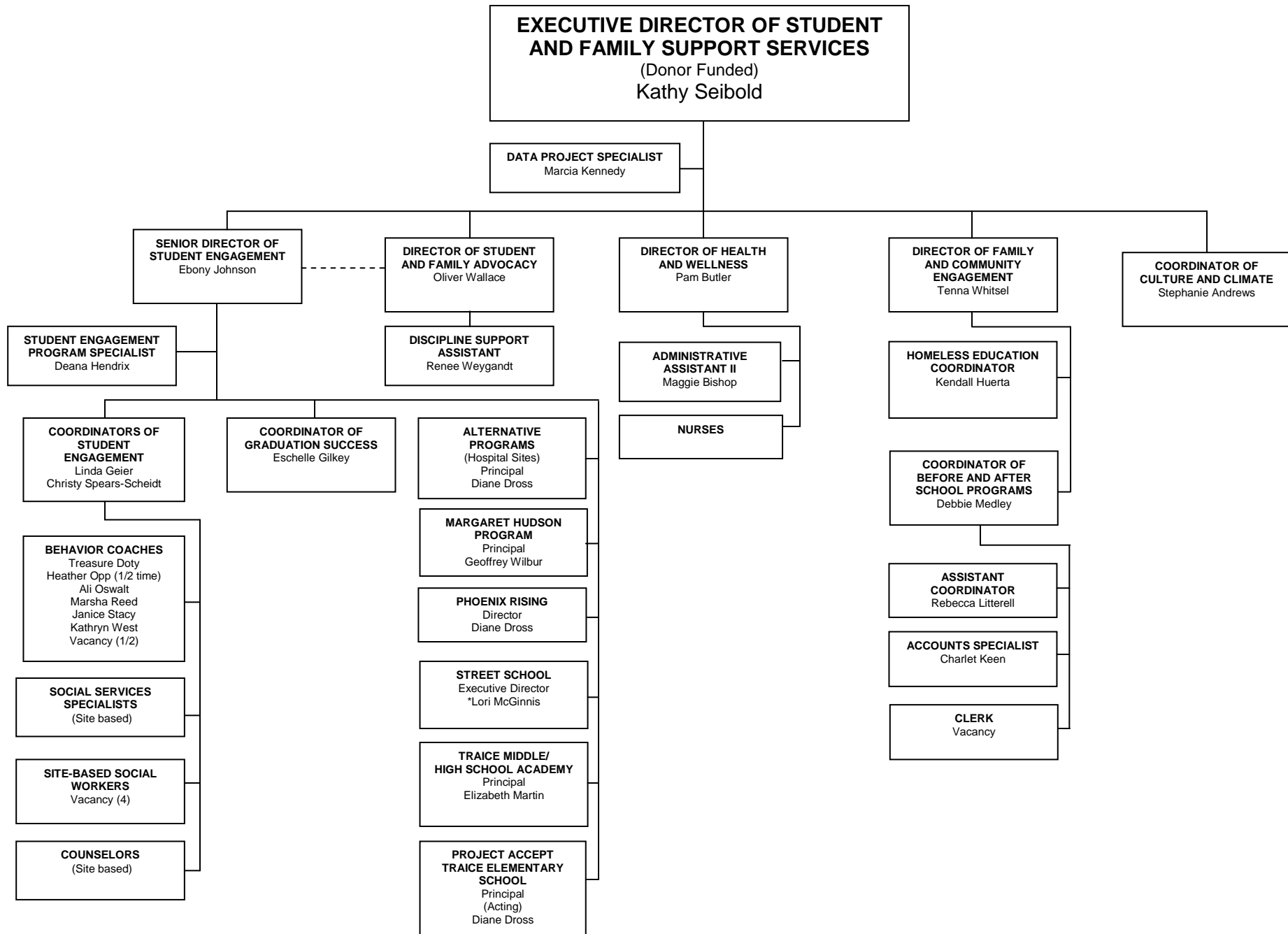
INSTRUCTIONAL LEADERSHIP



INSTRUCTIONAL LEADERSHIP

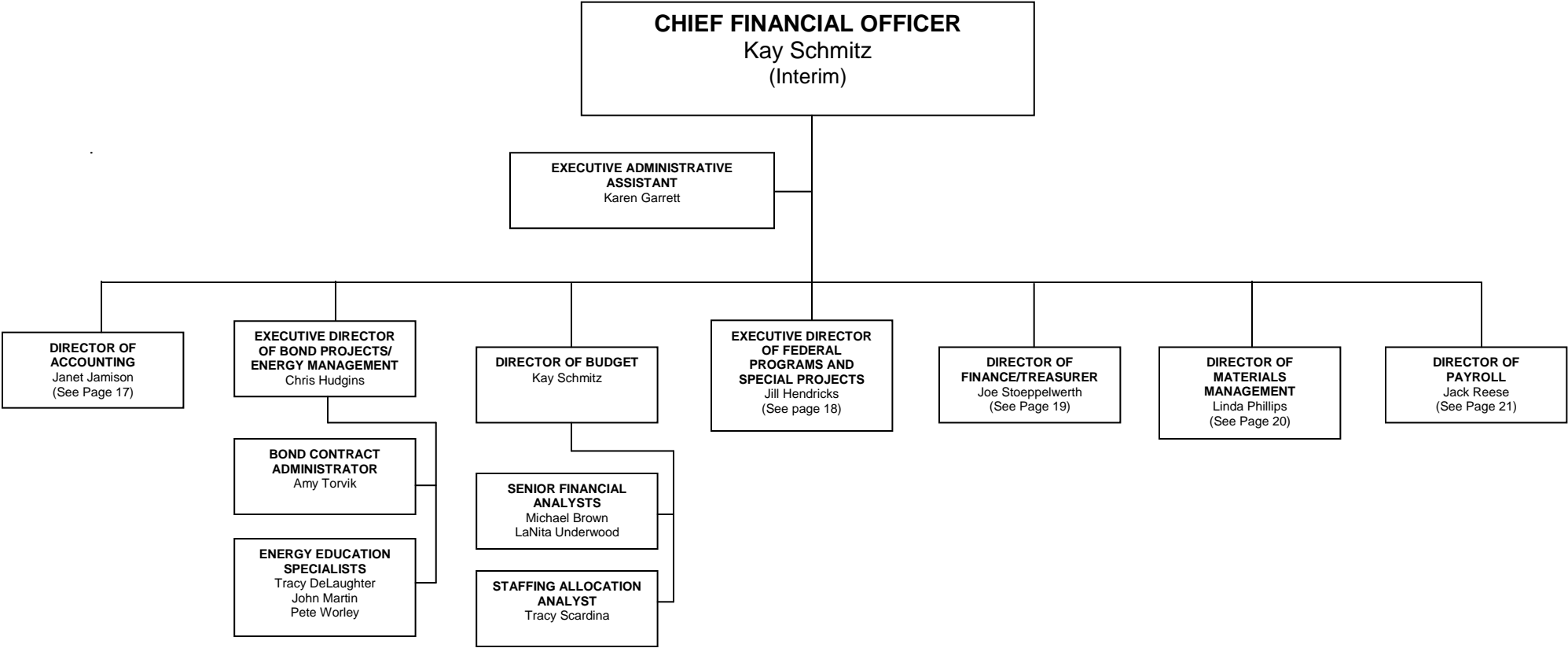


STUDENT AND FAMILY SUPPORT SERVICES

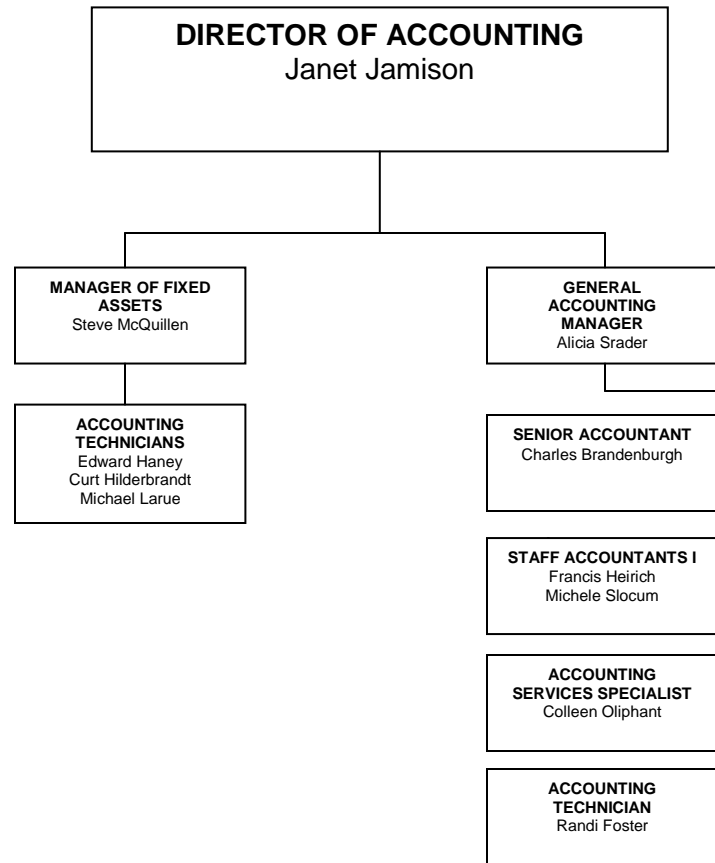


----- Indicates shared responsibility

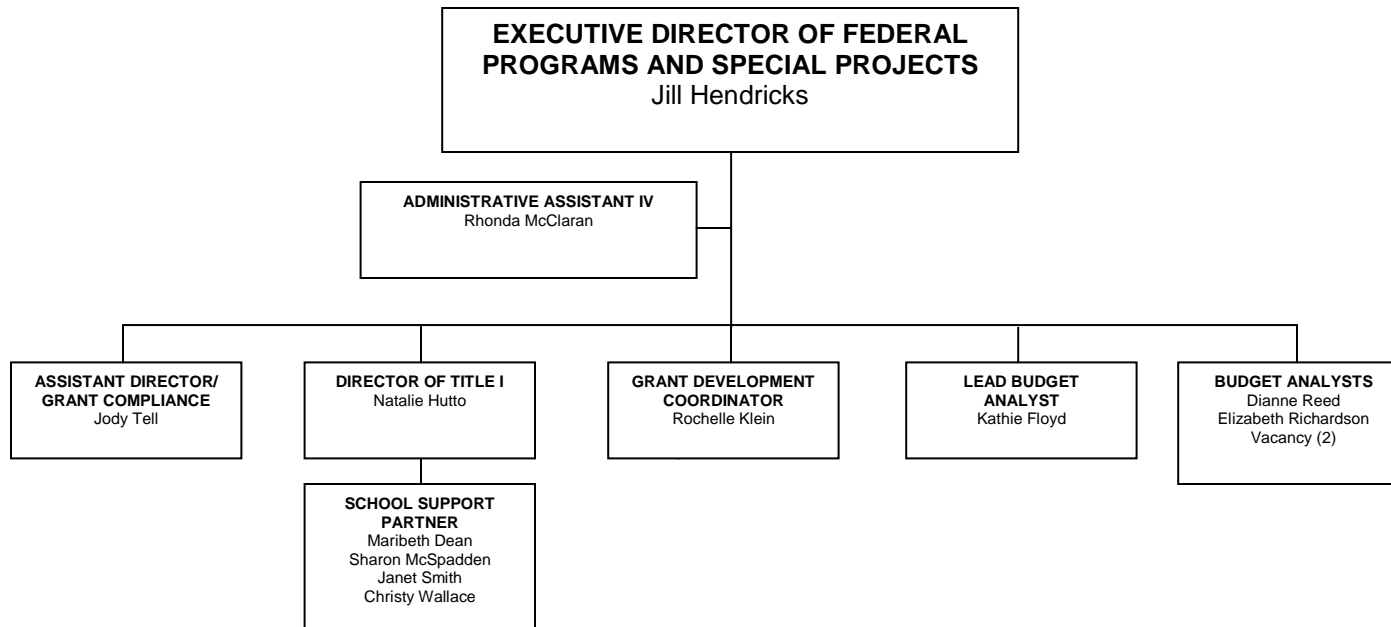
FINANCIAL SERVICES



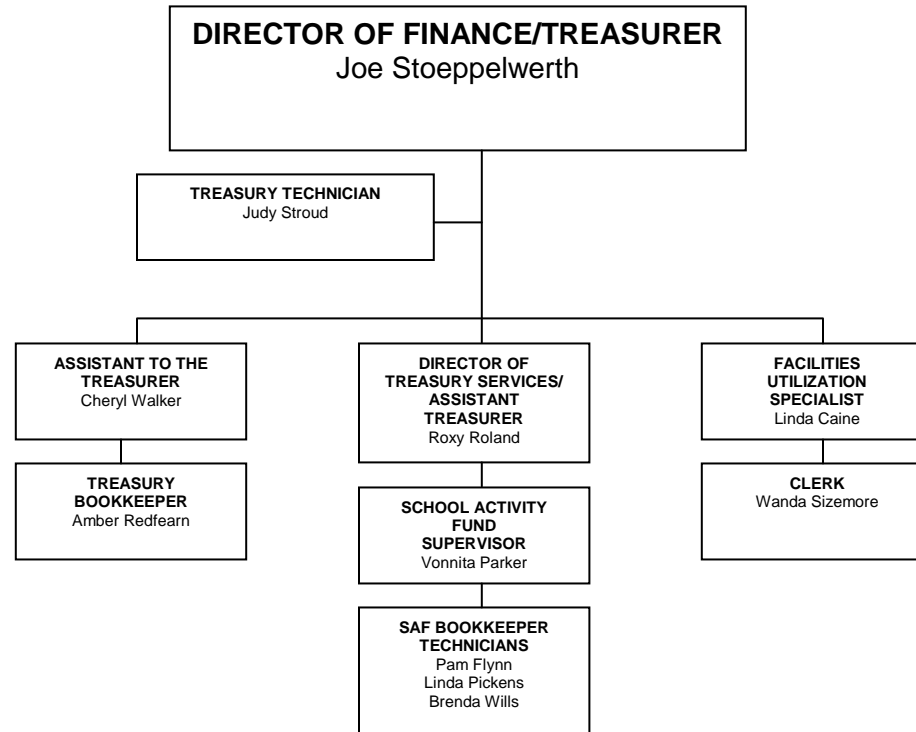
ACCOUNTING OFFICE



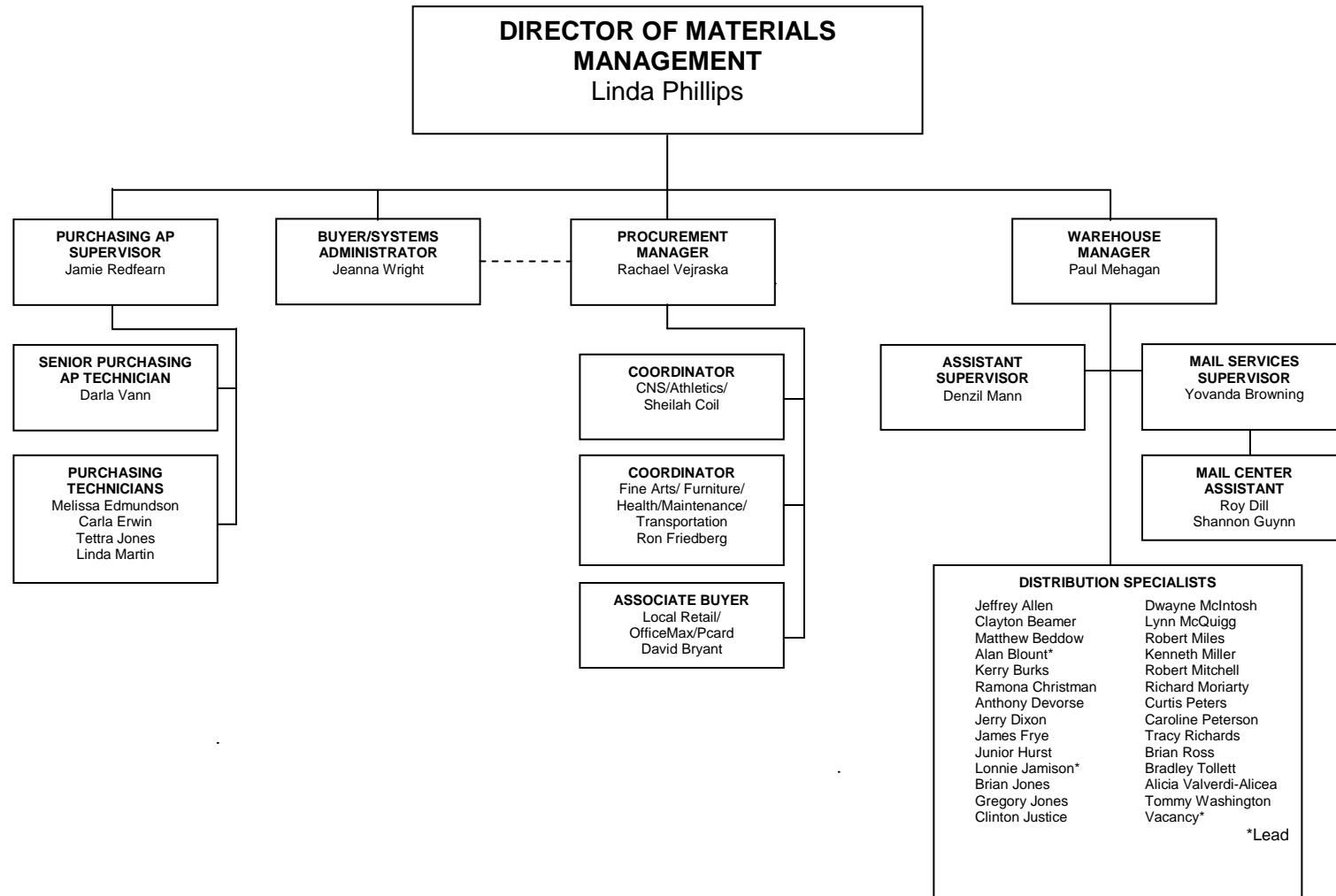
FEDERAL PROGRAMS AND SPECIAL PROJECTS OFFICE



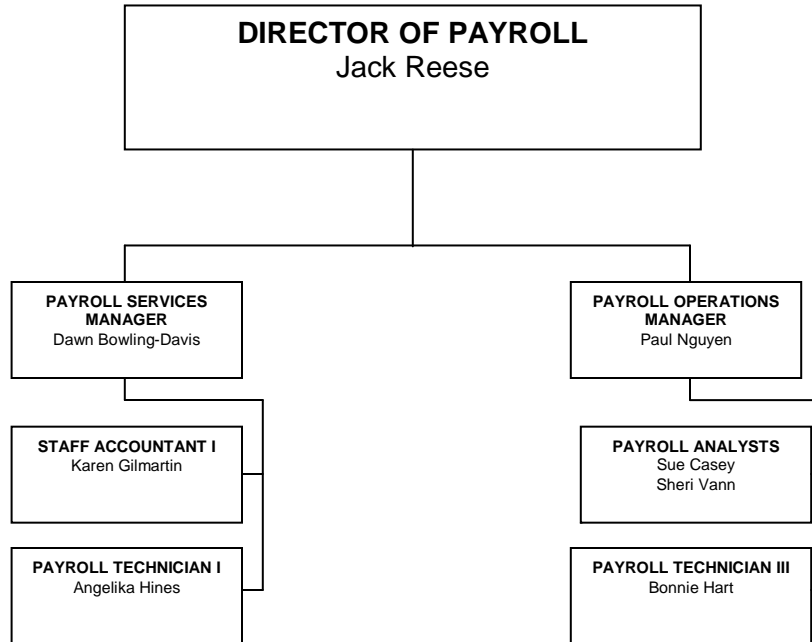
FINANCE / TREASURER'S OFFICE



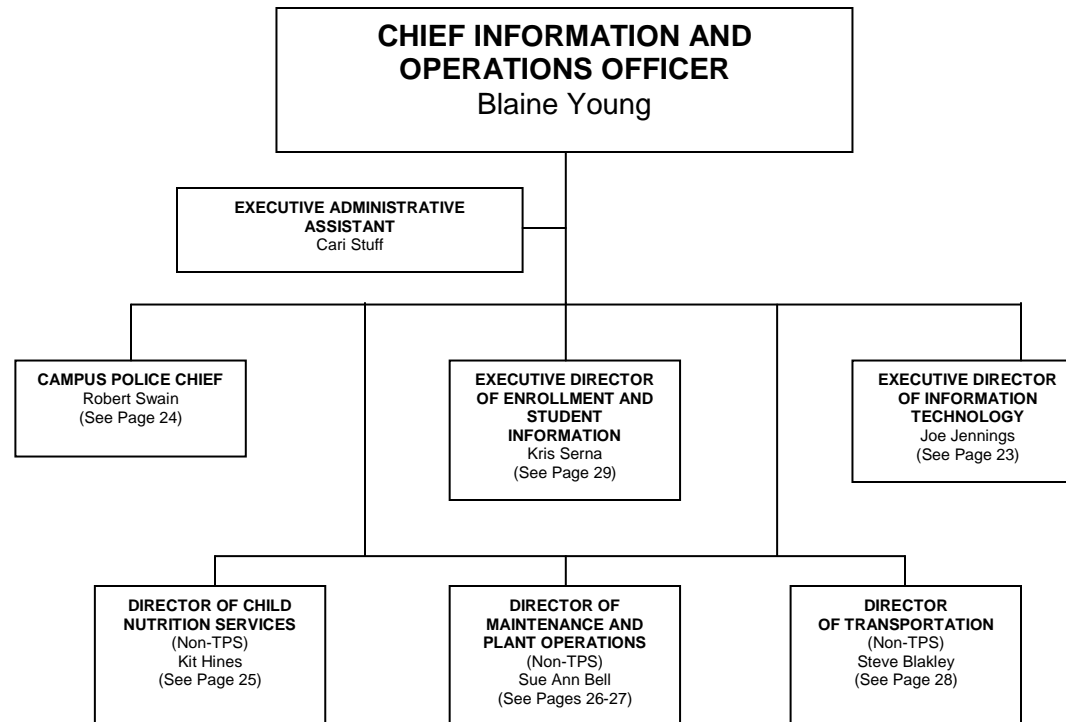
MATERIALS MANAGEMENT OFFICE



PAYROLL OFFICE



INFORMATION AND OPERATIONS



INFORMATION TECHNOLOGY

**EXECUTIVE DIRECTOR OF
INFORMATION TECHNOLOGY**
Joe Jennings

ADMINISTRATIVE ASSISTANT IV
(Unfunded)
Vacancy

BUSINESS SERVICES

**DIRECTOR OF
BUSINESS SERVICES**
Charlotte Manning

PROJECT MANAGER
Vacancy

PROJECT COORDINATOR
Brenda Estes
(non-TPS)

PROJECT MANAGER
Jim Williams
(non-TPS)

PROJECTS ADMINISTRATOR
Orbie Edwards

ADMINISTRATIVE ANALYST
Jeana Gee

PRINT CENTER
(Non-TPS)

SERVICE DELIVERY MANAGER
Tom Fogger

GRAPHIC DESIGNER
John Morgan

SENIOR ONSITE SPECIALIST
Jim Stone

SUPPORT SPECIALIST
Amanda Watkins

COURIER
Terry Burwell

CLIENT SERVICES

TECHNICAL SERVICES MANAGER
Robert Burton, Jr.

AUDIO/VIDEO TECHNICIAN
Ben Tippin (lead)

**BUSINESS MACHINES
TECHNICIANS**
Kevyn Rutherford*
Gary Winstone

*Lead

COMMUNICATIONS TECHNICIANS
Roger Collier
Aaron Gallion
David Lower*

*Lead

LIGHT/SOUND TECHNICIAN
Matthew Strauss

NETWORK TECHNICIANS
Matthew Reed
Tim Youngblood*
Vacancy

*Lead

PC TECHNICIANS
Justin Aldrich
Micah Beasley
Kenneth Brewer*
Dennis Harlien
Daniel Hollaway
Vacancy (4)

*Lead

INFORMATION SERVICES (Applications)

**DIRECTOR OF
APPLICATION DEVELOPMENT**
Scott Bollin

**MANAGER OF BUSINESS
INTELLIGENCE**
Vacancy

APPLICATION PROGRAMMERS
Genie Howard
John Lanford
Tammy Palmer
Mark Thomas
Vacancy

**APPLICATION SUPPORT
ANALYSTS**
Charlette Fisher
Kevin Hess
Joshua Myers
Terri Wensman
Vacancy

**SENIOR DATABASE
ADMINISTRATOR**
Dail Summers

OPERATIONS AND SUPPORT (Infrastructure)

**DIRECTOR OF
INFORMATION SYSTEMS
SERVICES OPERATIONS**
Tracy McGee

DATA ENGINEER II
Charles Diebold

**NETWORK SYSTEMS
ENGINEERS II**
Willie Wesley
Vacancy

**NETWORK SYSTEMS
ENGINEER I**
Kevin Williams

TELECOM ENGINEER II
William Myers

SERVICE DESK

SERVICE DESK SUPERVISOR
Linda Drink

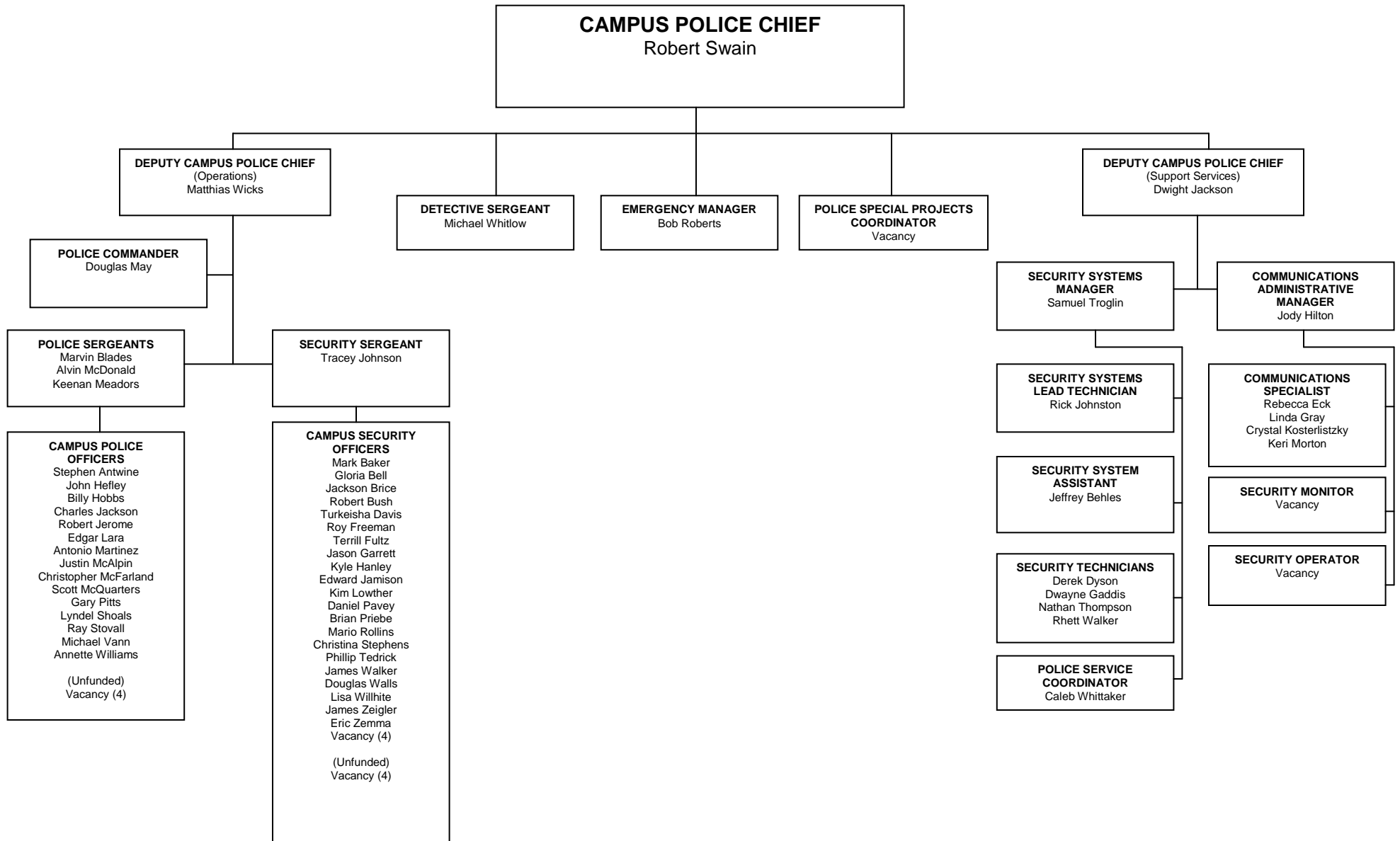
SERVICE DESK ANALYSTS II
Sharon Carson
Andrea Gourley
Chris Scott
Vacancy

SERVICE DESK ANALYSTS I
Natalie Burns
Louise Owen
Kendall Rimmer

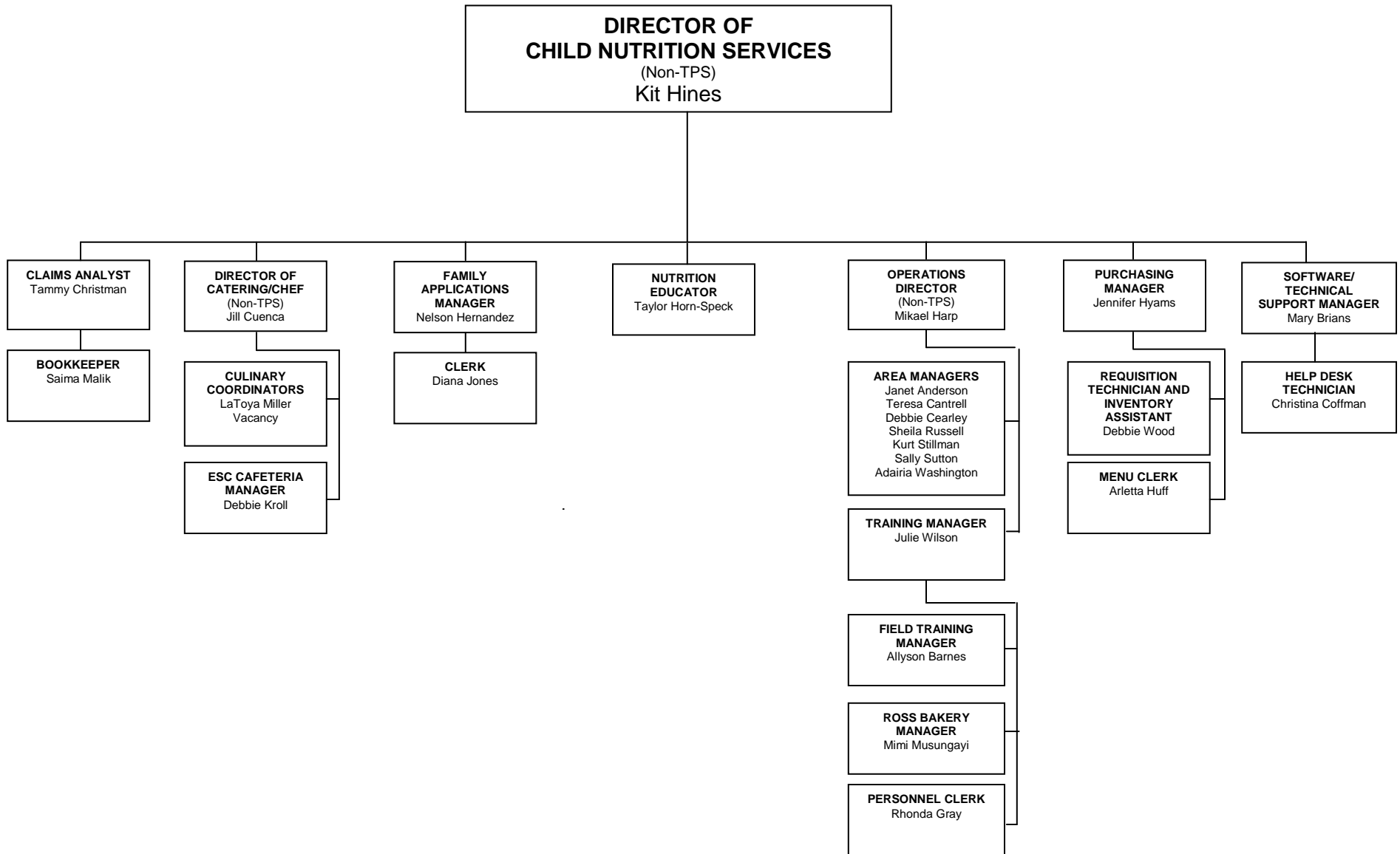
**SERVICE DESK ANALYST/
SECURITY ADMINISTRATION**
Lawanna Penny

**SERVICE DESK ANALYST/
TECHNICIAN**
Jeffery Thomas

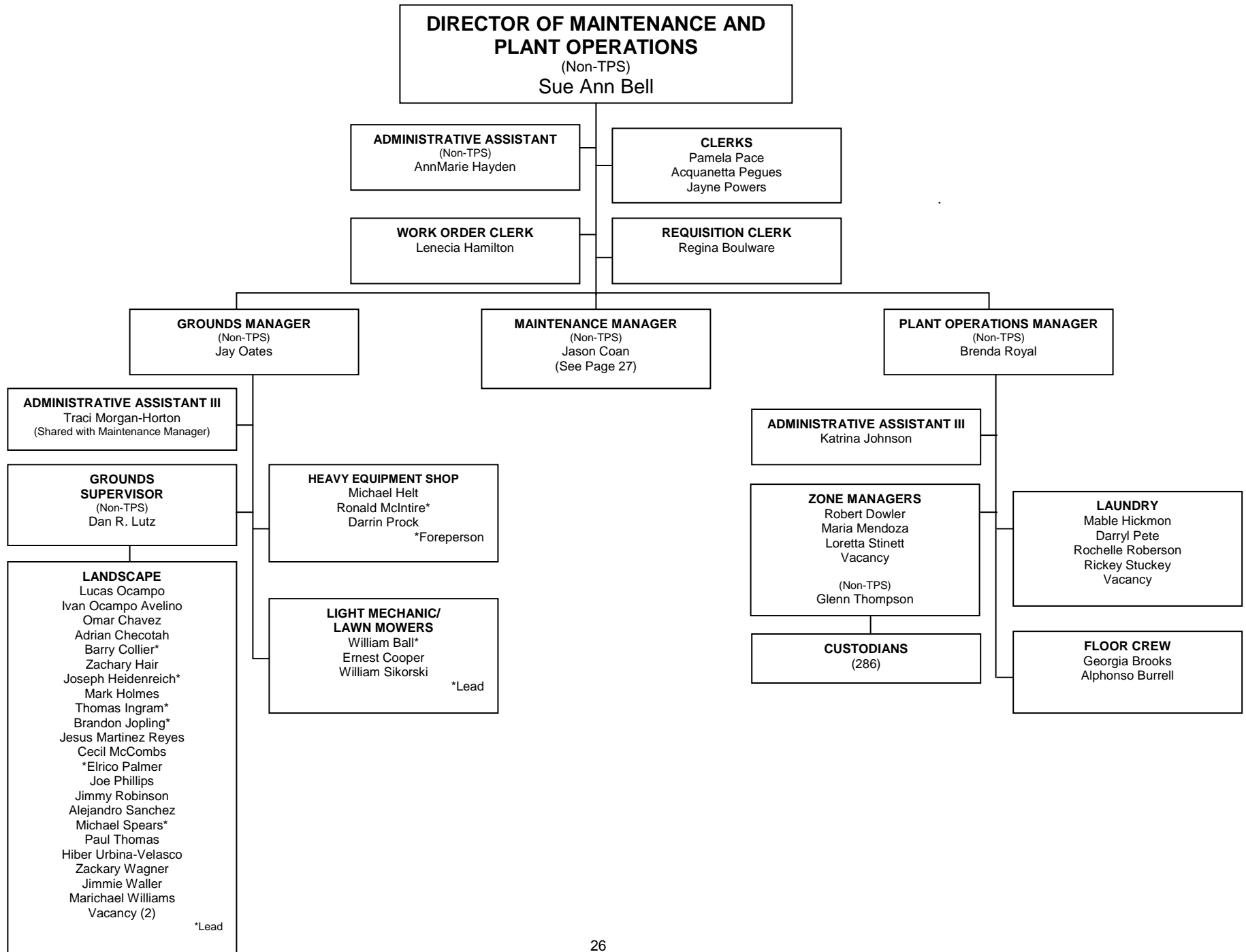
CAMPUS POLICE AND SECURITY SERVICES OFFICE



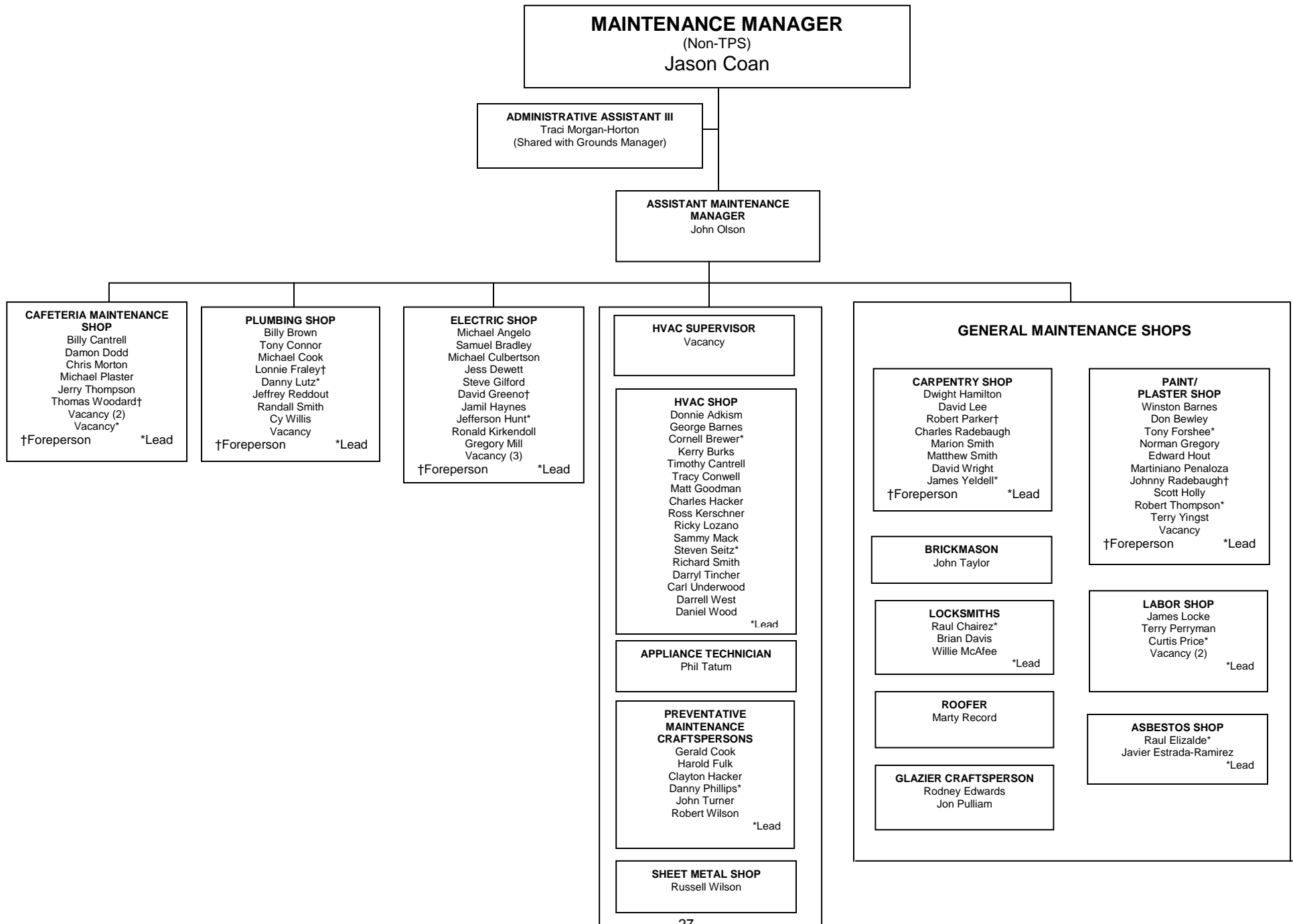
CHILD NUTRITION SERVICES OFFICE



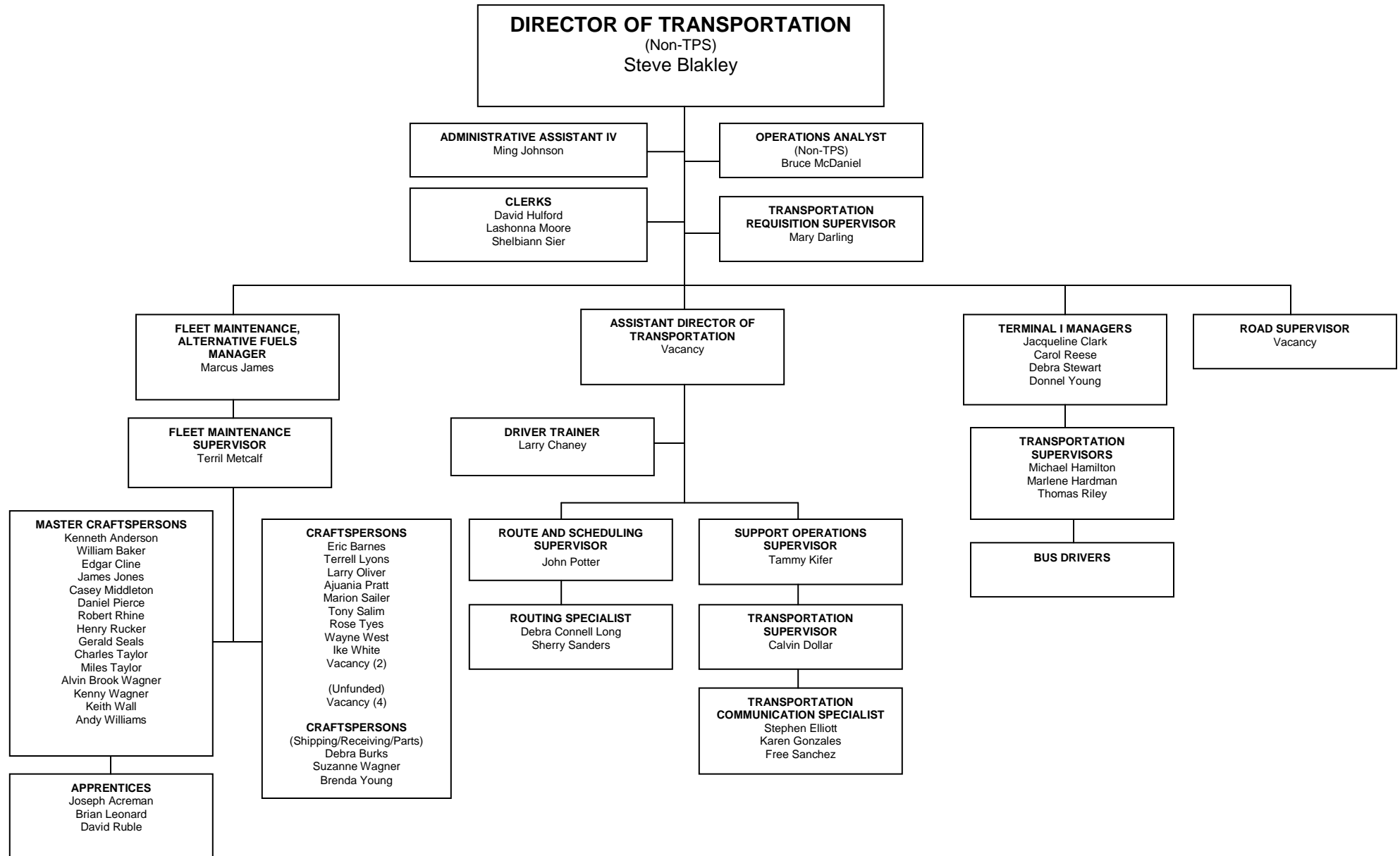
MAINTENANCE AND PLANT OPERATIONS OFFICE



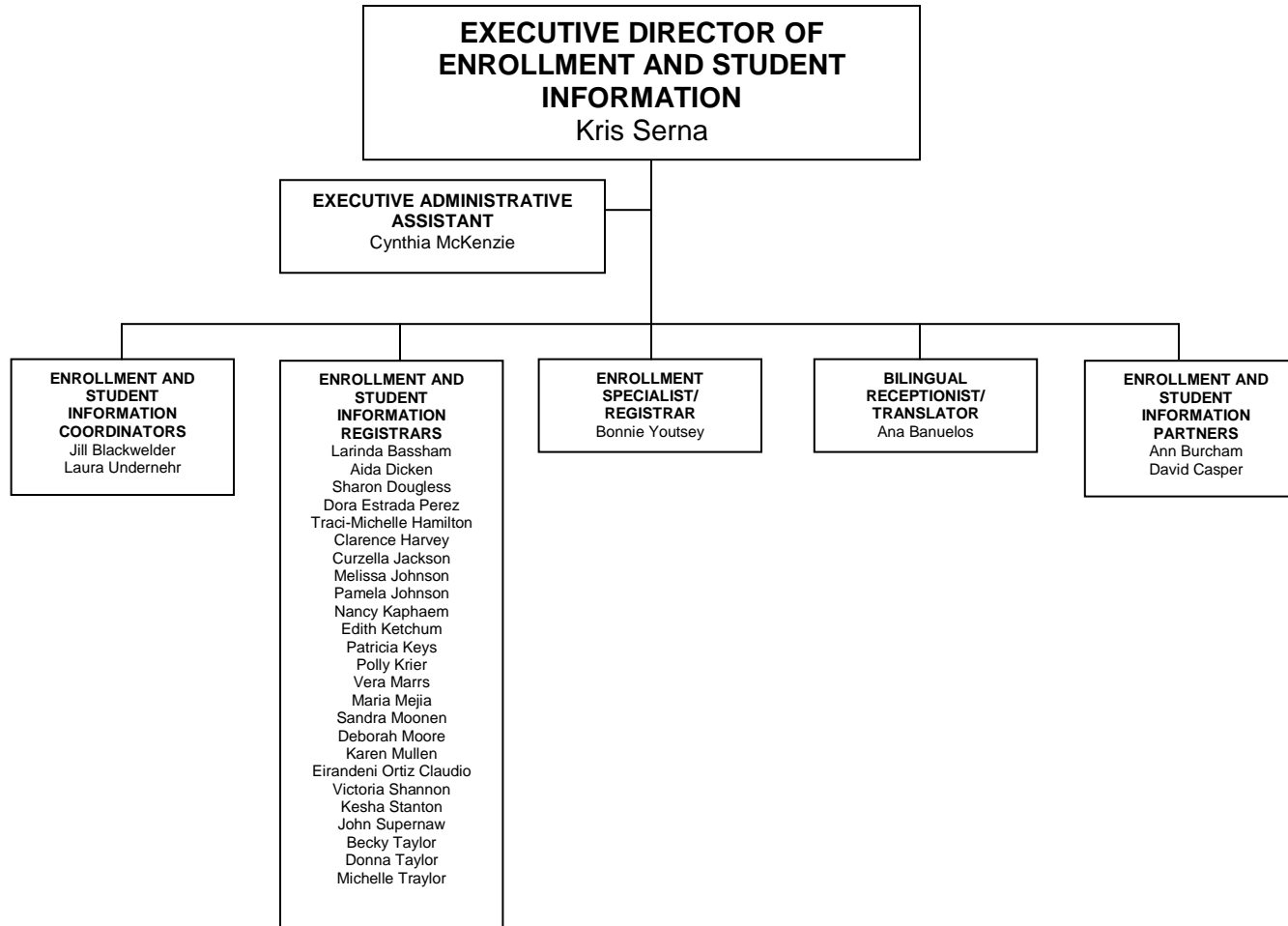
MAINTENANCE OFFICE



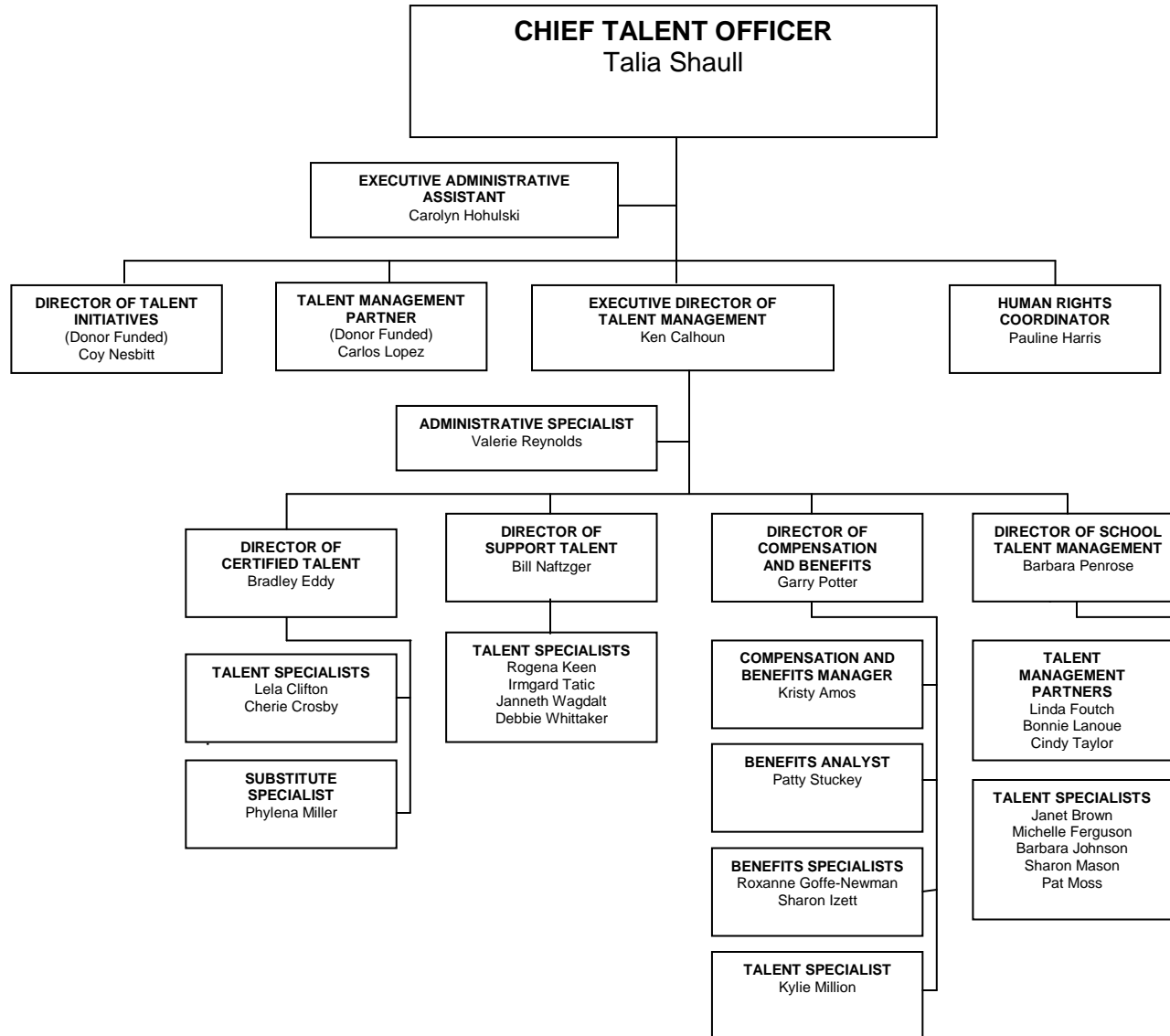
TRANSPORTATION OFFICE



ENROLLMENT AND STUDENT INFORMATION



TALENT MANAGEMENT



GENERAL COUNSEL

