



gift box sashes

Free Pattern!

MIDWEST MODERN®
SEWING PATTERNS



Gift Box Sashes

SEWING PATTERN INCLUDES:

Instructions, measurements and pattern pieces to create your own **GIFT BOX SASHES**.

Adorn your gifts and then yourself! The sash can be worn as a neck or head scarf and belt sash.

Photography by Anne Gridley & Gary Graves.

Fabric shown is from Amy's NIGELLA™ collection for Rowan. Fabric used on the Gift Box Sash on the front cover is hdabs4 celery / passion vine. Gum Drop Pillows on front cover are made of hdabs2 aqua / primrose, hdabs1 spinach / water lotus, hdabs5 river / imperial fans.

Before you get started, please read through all of the instructions.

Materials List:

- 1 1/2 yards 54" wide light to mid-weight fabric
- 1 spool coordinating all-purpose thread (we use Coats Dual Duty Plus®)

Tools Needed:

- Scissors
- Tape measure
- Yardstick
- Turning tool (such as a closed pair of scissors)
- Iron / ironing board
- Straight pins
- Fabric marker

Finished sizes: 5 1/2" wide x length determined by gift box

Step 1.

DOWNLOAD AND CUT OUT PATTERN PIECES

A. Cut out 2 pattern pieces for Sash.

- Left End
- Right End

Step 2.

FIGURE LENGTH FOR SASH

A. To determine length of sash, use following formula with gift box of choice. Add:

$$\begin{aligned} \text{Width of box} \times 2 &= \text{___ inches} \\ \text{Length of box} \times 2 &= \text{___ inches} \\ \text{Depth of box} \times 2 &= \text{___ inches} \\ \text{TOTAL} &= \text{___ inches} \\ &+ \text{65 inches for bow and seam allowance} \\ &= \text{___ inches (length to cut)} \end{aligned}$$

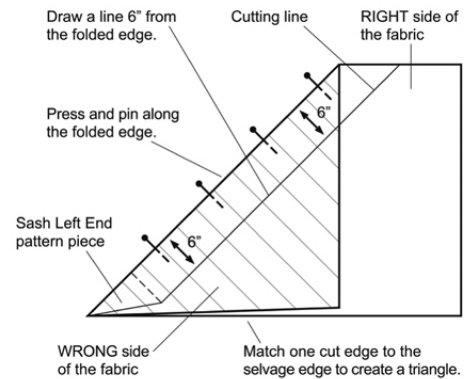
Step 3.

CUT SASH OUT OF FABRIC ON BIAS*

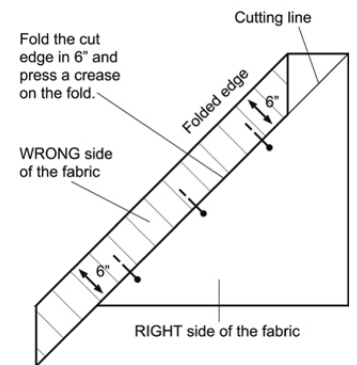
A. Open fabric. With **RIGHT** sides together take one selvage edge* and match with one cut edge to form triangle. Press crease on folded edge. Pin to keep the fabric from slipping while measuring and marking sections of Sash directly on fabric.

B. For the first section, place Sash's Left End pattern piece at bottom of fabric with its top edge on fold of fabric and pin.

C. Then, using fabric marker and yardstick, measure and mark 6" in from folded edge at several points. Connect marks by drawing a line parallel to fold. Cut first bias strip across slanted edge of pattern piece and then along the line you just drew.

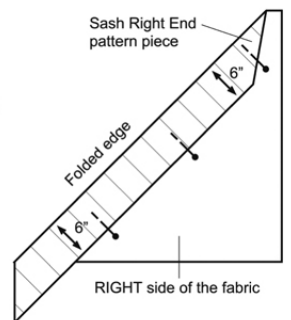


D. Using remaining fabric, fold cut edge in 6" and press crease on fold. Cut second bias strip by cutting even with the cut edge.



E. Continue to fold, press and cut strips until you have the sash length determined for your gift box.

F. On the final strip, place Sash's Right End pattern piece at the top end of strip on the fold of the fabric. Pin. Cut final strip following the slanted line and then across the long edge of pattern piece.



Step 4.

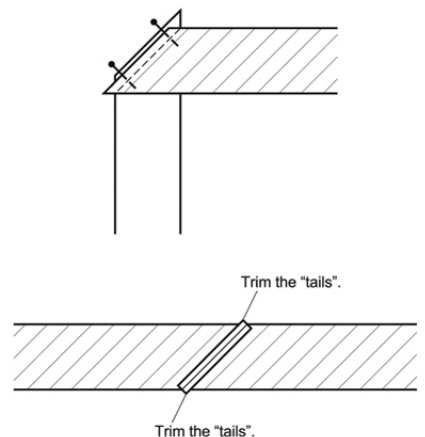
SEW BIAS STRIPS TOGETHER

A. Join strips into one long piece by laying strips perpendicular to each other with **RIGHT** sides together. Pin.

B. Stitch across diagonal edges of the strips with a 1/2" seam, backstitch* at each end. Press seam allowance* open.

C. Trim* the small "tails" of the fabric on each side of the seam on the bias strips.

D. Repeat Steps 4A through 4C until you have joined all strips into one long bias strip.



Step 5.

MAKE SASH

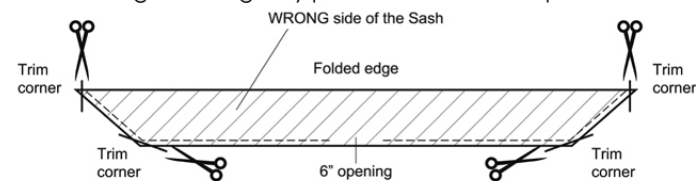
A. Fold strip in half lengthwise with **RIGHT** sides together and pin.

B. Starting at folded edge of Sash, stitch 1/2" seam across slanted end and down long side, leaving a 6" opening centered on the long edge. Continue sewing long edge and across opposite slanted end. Backstitch at all stopping points.

(Continue with Step 5 on page 2.)

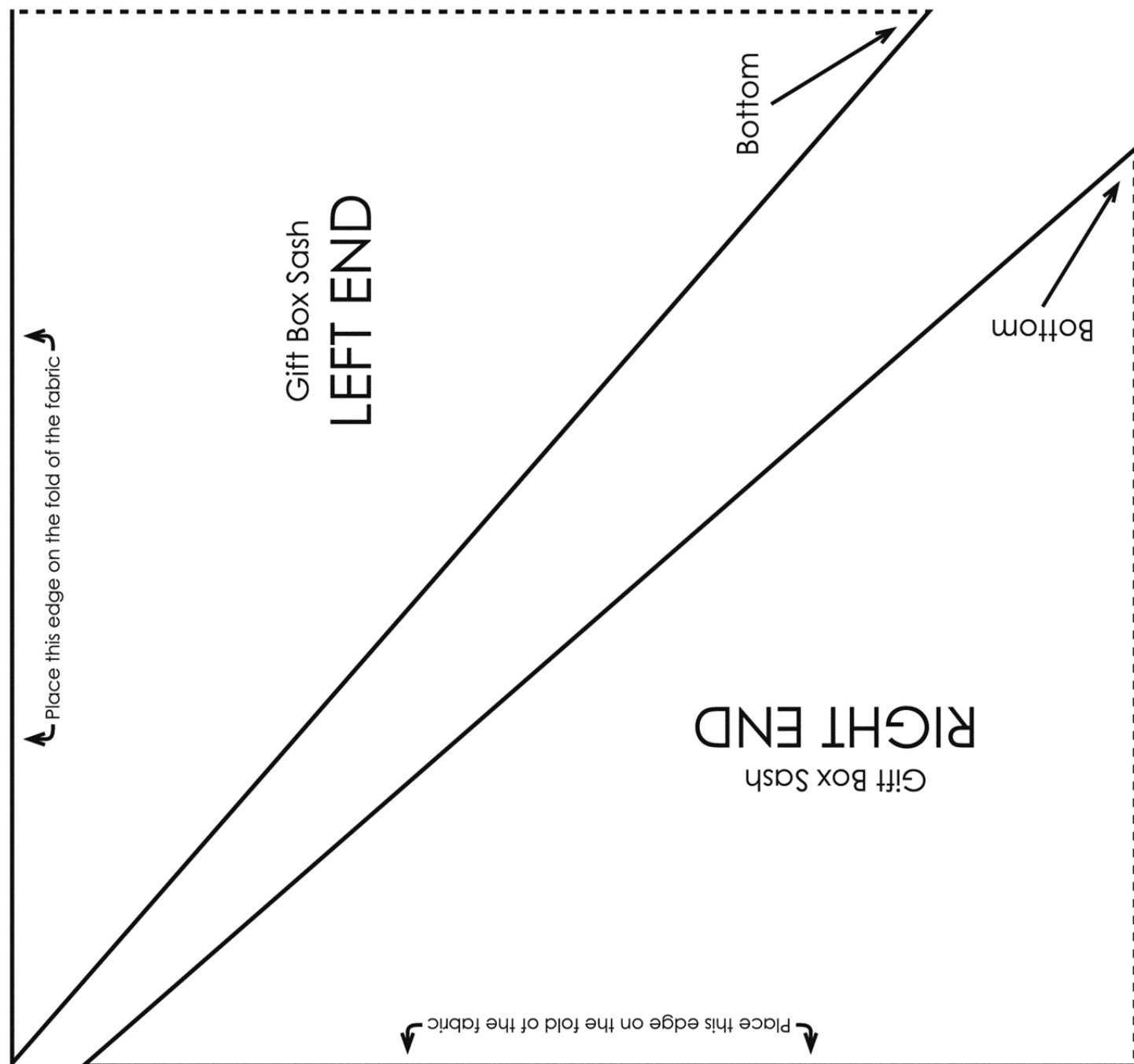
C. With scissors, trim seam allowance at two pointed ends and angled corners. Make sure not to clip stitching.

D. Turn Sash **RIGHT** side out by pulling it through the 6" opening. Use a turning tool* to gently push out corners and press.



E. Turn raw edges of opening 1/2" under and press. Pin and then slipstitch* opening closed. Press.

Use the Sash to wrap your gift box forming a large bow on the top of the package.



All designs © 2008 Amy Butler Art of the Midwest, LLC

All designs, photographs, and images protected by federal copyright. Designs not to be created for commercial sale. All rights reserved. Art of the Midwest, LLC