

Fairy Exploding Box

by Katarina Menzies
www.TheCreataholic.Blogspot.com

Supply List:

2 sheets heavy white cardstock. I used Heavenly White 12" square card stock.

Green card stock

Aqua card stock

2 coordinating patterned papers. I used Prima's Fairy Flora for this project.

Sheet of watercolor paper

Acetate

Card stock for your stamped image. I used Neenah white.

Memento Ink (Rich Cocoa)

Blue green ink. (Papertrey Ink's Ocean Tides)

Versamark

Gold embossing powder

Spray Inks. Glimmer Mists used on my project; Tattered Rose, Starfish, Candleglow, Sweet Clover, Dragonfly

Viva décor Yellow Pearl Pen

Colored pencils

Copics for skin; E0000, E00, E11

Odorless Mineral Spirits

Blending stumps

Stardust Sticks

Scor Pal

Ruler

X-acto knife

Bone folder

Foam mat

Embossing tools. I used ones with several different sized 'balls' and the blunt end. The end of a Sharpie marker works well too.

Spellbinders Labels 15

Circle Nestabilities

Double sided sticky tape 1/16" & 1/4" (Sookwang used here).

White Glue (I use Tombow Mono Multi for attaching flat layers, and thick white tacky glue for 3D flowers).

Ribbon

Bow Easy

Cotton thread

Yellow seed beads

Stamps:

Lili of the Valley's Fairy Friends & Dreamy Days Circle sentiments

Gina K Lovely Labels 2

Stamp 'Fairy Friends' in Rich Cocoa Memento ink onto a piece of Neenah card stock. Color skin with Copic E0000 first. Add a bit of E00 and E11 for shading. Go back over everything with E0000 to blend colors.



I used several different brands of colored pencils to color the rest of my image in.
Derwent: Primrose yellow, Straw yellow, Scarlet lake, Dark Violet, Blue Violet Lake, Sky Blue, Turquoise Blue, Jade Green, May Green, Sap green, Copper Beech
Lyra Polycolor: Dark flesh, Medium flesh, Gold Ochre, Burnt Ochre
Faber Castell: Burnt Siena



When image is colored, apply a piece of patterned paper to the back with a thin layer of glue. This is so the back of the image looks nice when box is on display. Using very sharp scissors or an X-acto knife, cut around the image. Leave a little bit of the white paper showing, and don't go too crazy getting into all the nooks and crannies. Leave about a 1/4" of paper on the bottom of the flower stem. This will help the image stand straight up in the flower. Apply a little Stickles to the fairy's wings and set aside to dry.

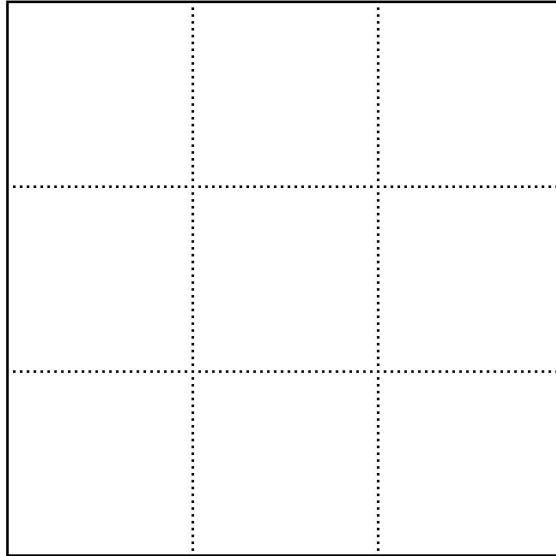
Assembling the box:

Cut two squares of heavy white card stock.

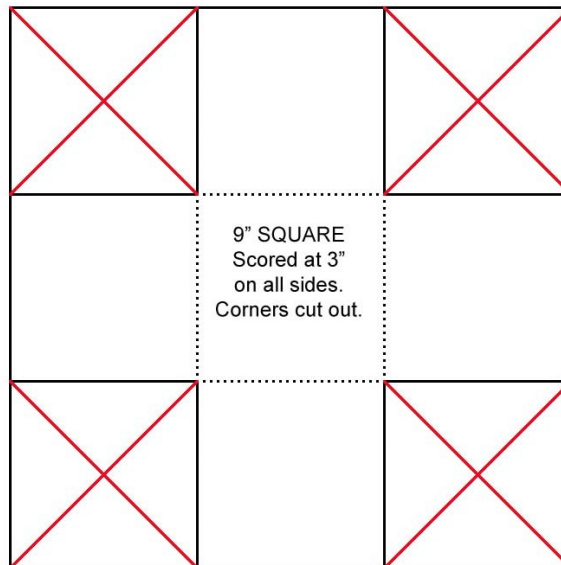
9" x 9" and

6" x 6"

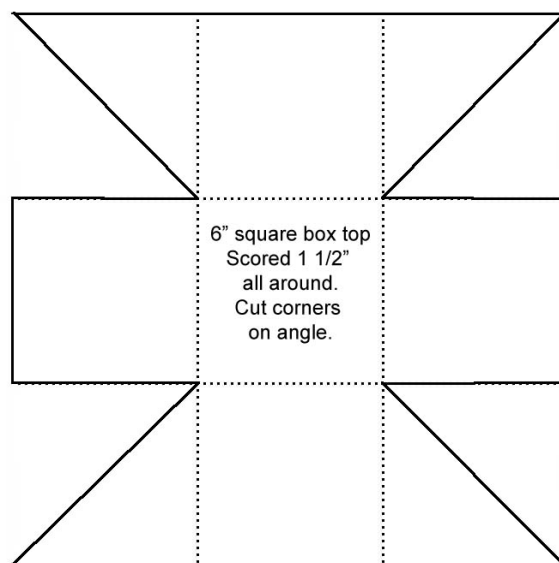
Score the 9" square of card stock at 3" on each side. Score the 6" square 1 1/2" on each side. Both will look like this diagram at this point. Press all folds firmly with bone folder.



Open 9" square so it's flat on your table. Take your ruler and knife or trimmer and cut away all the corners. You should be left with a 'plus' sign shaped piece of card stock as in the following diagram:



For the box top, instead of cutting away the corners completely, cut them on an angle. Line up your ruler from one corner of the square formed by the scored lines to the outside corner of the card stock. Apply some glue to these triangles and fold them to the inside of the box.



Decorating the box:

Trim one piece each of aqua and green cardstock to $8 \frac{1}{4}$ " squares. Cut each square into nine $2 \frac{3}{4}$ " squares. These are your first layers.

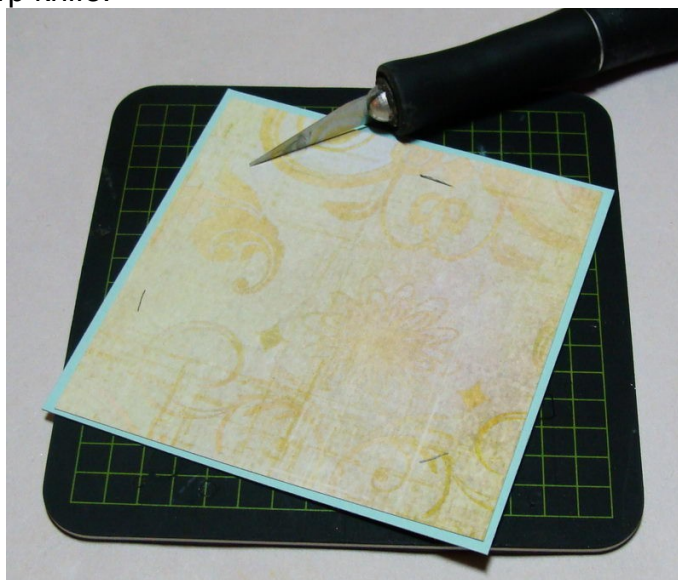
Trim two different pieces of patterned paper to $7 \frac{1}{2}$ " squares. Cut each square into nine $2 \frac{1}{2}$ " squares. These are your second layers for the inside and outside of the box bottom.

For the box top:

Trim 4 pieces of green cardstock to $2 \frac{3}{4}$ " x $1 \frac{1}{4}$ ".

Trim 4 pieces of the same patterned paper as the outside of the box bottom to $2 \frac{1}{2}$ " x 1".

Layer all patterned papers to their corresponding solid colors using glue. You can adhere all the layers to the box top and the outside of the box bottom. Before you adhere the paper layers to the inside of the box bottom, make a mark where you want to affix your acetate strips in pencil. Cut a $\frac{1}{4}$ " slit in the paper with a sharp knife.



Cut some $\frac{1}{8}$ " wide strips from acetate. I used thicker acetate and the $\frac{1}{8}$ " worked best for me, but if you have very thin acetate, you might need to cut them a little wider. Otherwise they'll flop over as soon as you stick a flower to it.

You might want to experiment a bit before permanently attaching the strips to your box.

Attach a bit of narrow double stick tape to one end of the strip and slide into the slits. The length of the acetate doesn't matter right now, trim them later. You can now attach this layer to the inside of the box bottom.

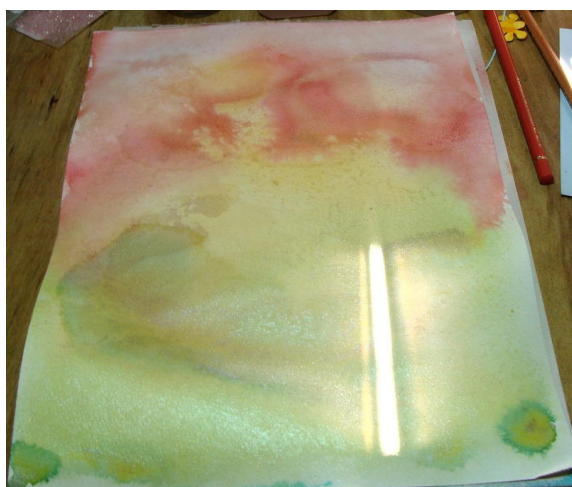
For the inside walls of the box, glue the layers down BUT leave a 1/4" gap on one side. Don't apply glue all the way to this edge. This way you can slide a strip of acetate under the edge easily after it's glued down. I find it easier this way instead of trying to plan where all the strips are going to look best before everything is assembled.



You can now finish the back wall of the box. I stamped the Labels 15 coordinating stamp in gold embossing powder, cut it out with the die and glued it down. I stamped the circle sentiment on a separate scrap of patterned paper and cut that out as well. I popped it up over the label frame with some foam tape.

Assembling the Flowers:

Spray a full sheet of water color paper with assorted spray inks. I used Tattered Rose, Starfish and Candlelight on 2/3rds of the sheet and Sweet Clover, Candlelight and Dragonfly on the rest of it. Spray both sides of the sheet of paper, the flowers will look nicer when the backs are the same color. When the paper is dry you can start punching flowers and leaves. I used these punches:



I used the Sizzix Flower Daisies #3 die for the larger flowers. Cut out two sets of each size flower. *Save the scraps* after cutting the daisies, this is what I used to punch out most of the tiniest flowers. Punch out a LOT of the smaller flowers and leaves!

Begin shaping the flowers. The technique is the same for all the flowers. I basically start embossing the wrong side of the flower first. Depending on the petal shape, I either use firm pressure in a circular motion, or back and forth pressure up and down each daisy petal. Shape each petal, then flip it over right side up and using a circular motion, press the center of each flower till it 'cups' upwards a little.

For the leaves, I just embossed the wrong side of each leaf, then flipped it over and applied some 'veins' with the tiniest tip of the embossing tool.

This picture shows the shaping of the right side of the flower. I used the blunt end of the silver tool to shape the larger petals and the smaller ends for the smaller flowers and leaves.



Pg. 7

This is probably the most time consuming part of the project. I made myself a pile of flowers and leaves, got a clipboard, the foam mat, my tools and shaped all the flowers in front of the TV. Assemble the large and small daisies as shown:



Bend the bottom of the fairy image and stick to the middle of the smaller daisy with a bit of double stick tape.



Apply a generous pile of white glue all around the base and sprinkle with yellow seed beads. Set aside to dry.

Start assembling the small flowers. I used 9 in my box, but you can use as many or as little as you want. As you can see I glued two leaf stems to one flower, and later decided to add a tiny flower center (not pictured till the end).



Before you start attaching the little flower clusters to the acetate strips, trim each strip to desired

length. Leave some of them long, some short, some in between. But make sure they are shorter than the height of the box walls. I used very tiny pieces of double stick tape to attach the flowers to the acetate.



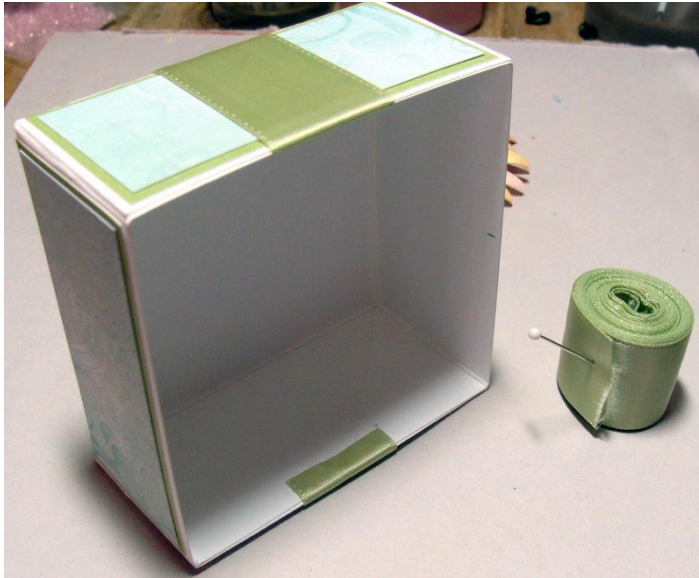
Once you've gotten all your acetate strips done, you can glue down the fairy/daisy to the middle of the box.

Finish decorating with all the tiniest flowers and leaves. Add a drop of yellow pearl paint to each flower center after everything is assembled. Set aside to dry.



Finishing box top:

Cut a length of ribbon approximately 7 1/4" long and attach to the top with some double stick tape.



I like to cinch the ribbon afterwards with a bit of cotton thread. Attach the large daisy with some foam tape over center of ribbon.

Make a bow out of the same ribbon and attach with double stick tape to the side of the box.



Now wipe your brow and take a deep breath. Done!

I want to thank Elaine from [Magic Boxes](http://www.magic-boxes.com/tutorials.htm) for allowing me to use some of her techniques for this tutorial. I aspire to make boxes as gorgeous as hers some day! If you want to learn some of these techniques for yourself, check them out here:

<http://www.magic-boxes.com/tutorials.htm>

<http://magic-boxes.blogspot.com/>

I welcome all questions, if you need some clarification on any part of this tutorial please contact me at:

linwe.luinwe@gmail.com