

Plant Maintenance:

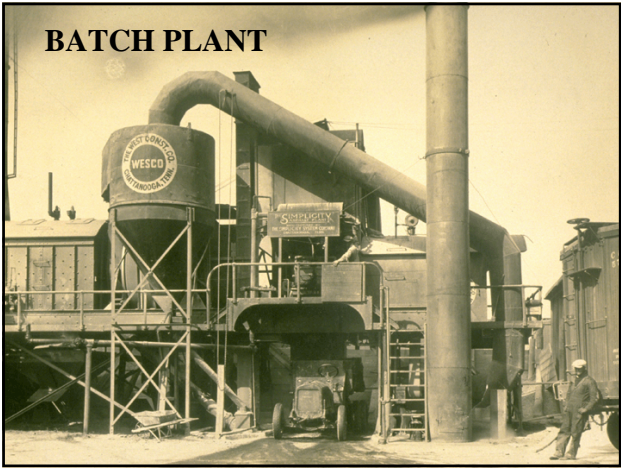
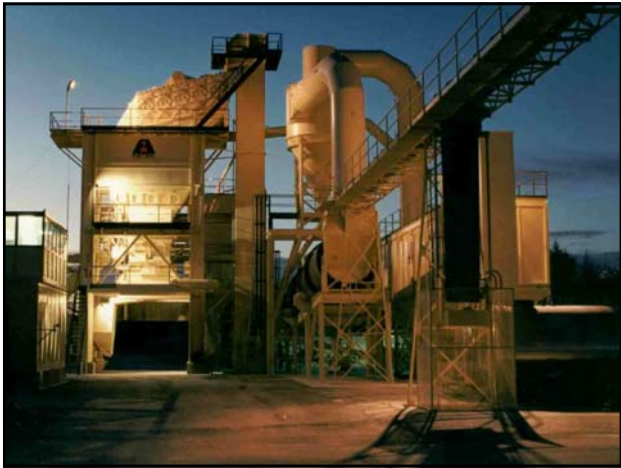
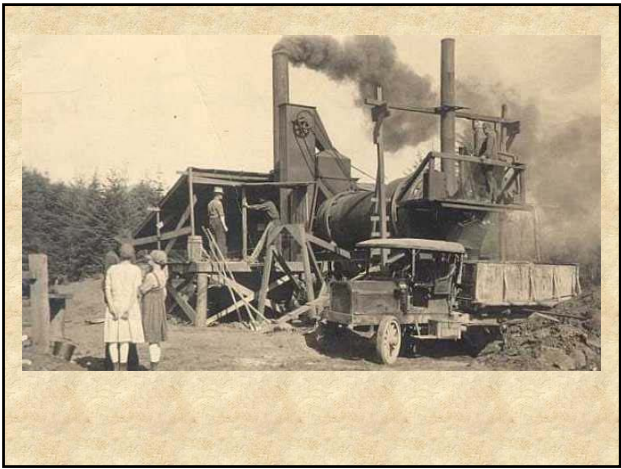
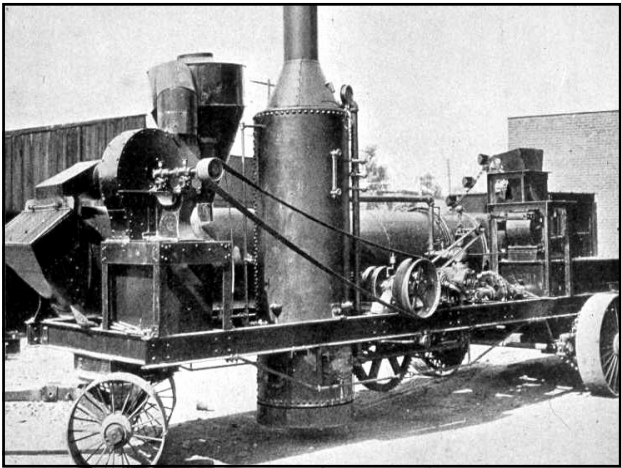
**Scheduled Maintenance
Preventive Maintenance**

A Successful Program

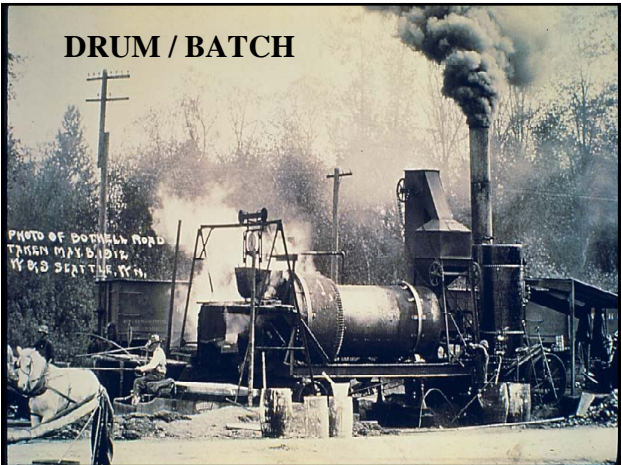
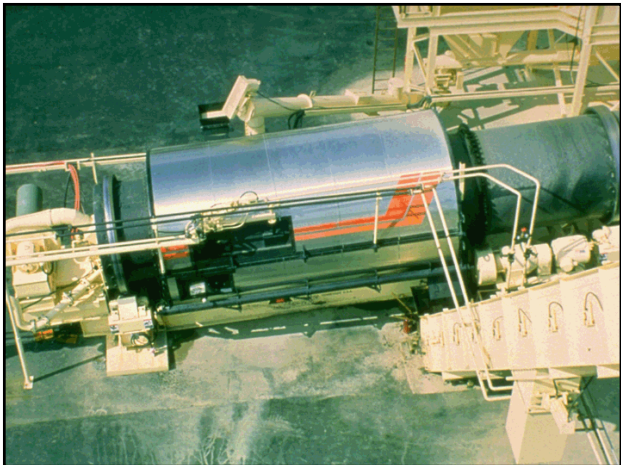
- They have a brief written maintenance plan.
- They establish a “route”, and “walk the plant” daily.
- They keep records of component failures.
- They stock critical spares.



SEAUPG 2005 CONFERENCE - NASHVILLE, TN



SEAUPG 2005 CONFERENCE - NASHVILLE, TN



SEAUPG 2005 CONFERENCE - NASHVILLE, TN



What Drives Equipment Change?

- ECONOMICS
- ENVIRONMENTAL
- SPECIFICATIONS
- SAFETY
- TECHNOLOGY

A color photograph of a large industrial machine, possibly a steam-powered engine or pump, with a vintage car parked nearby. The machine has a large flywheel and various pipes. The scene is outdoors, with trees and a building in the background.

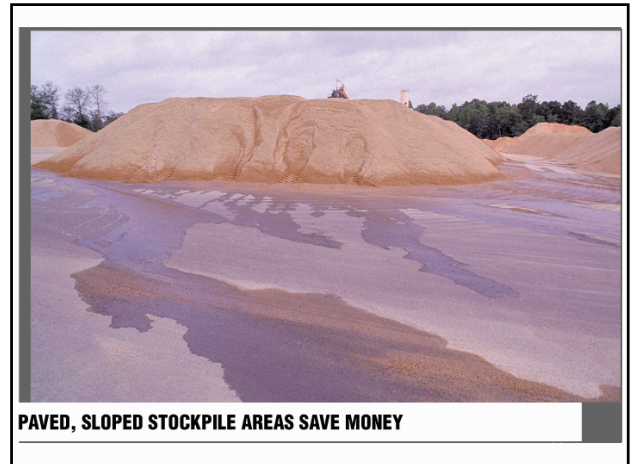
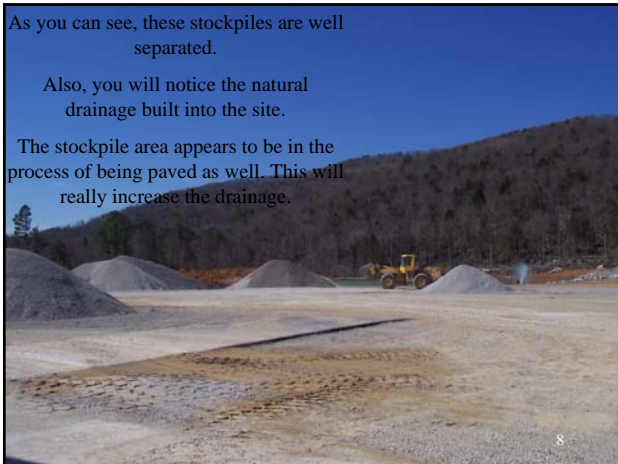
SEAUPG 2005 CONFERENCE - NASHVILLE, TN



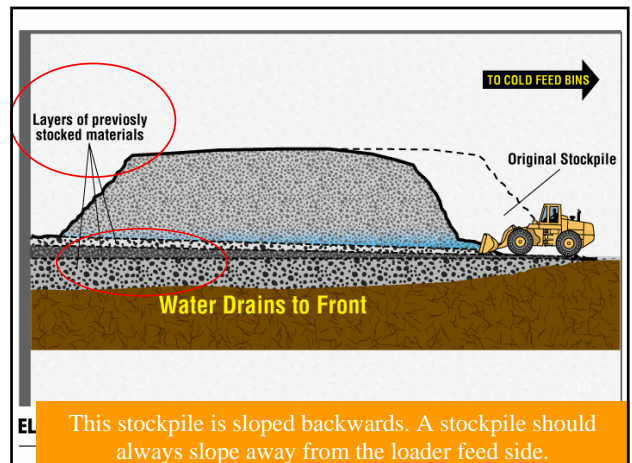
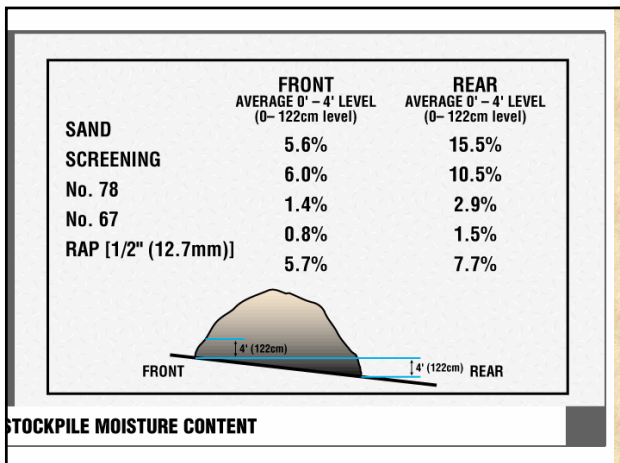
As you can see, these stockpiles are well separated.

Also, you will notice the natural drainage built into the site.

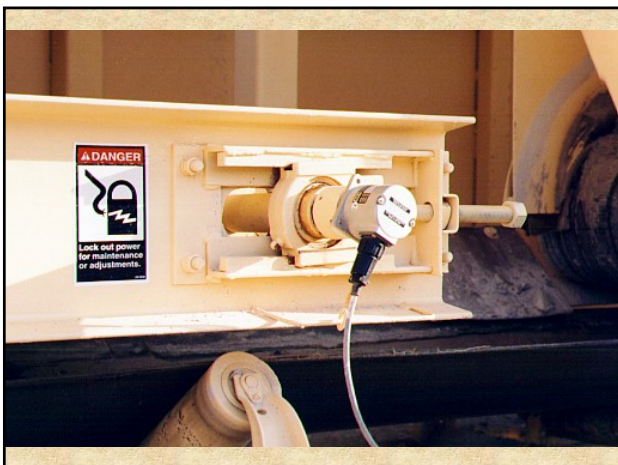
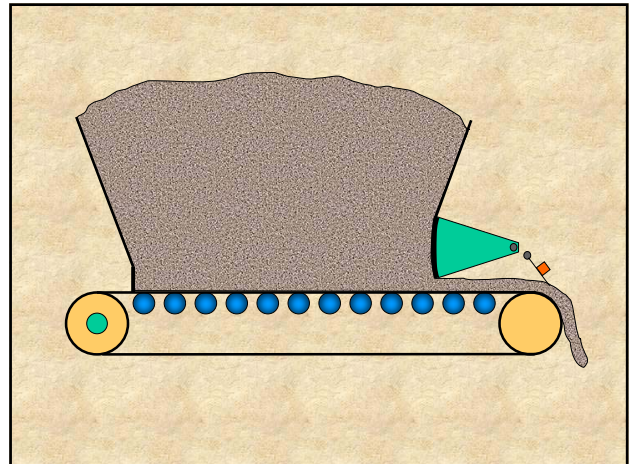
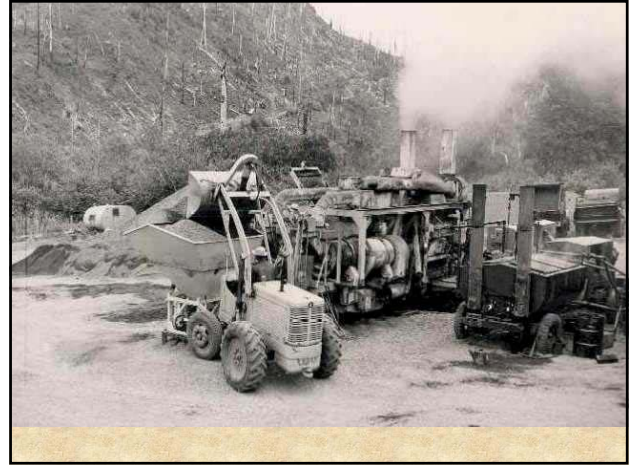
The stockpile area appears to be in the process of being paved as well. This will really increase the drainage.



PAVED, SLOPED STOCKPILE AREAS SAVE MONEY



SEAUPG 2005 CONFERENCE - NASHVILLE, TN

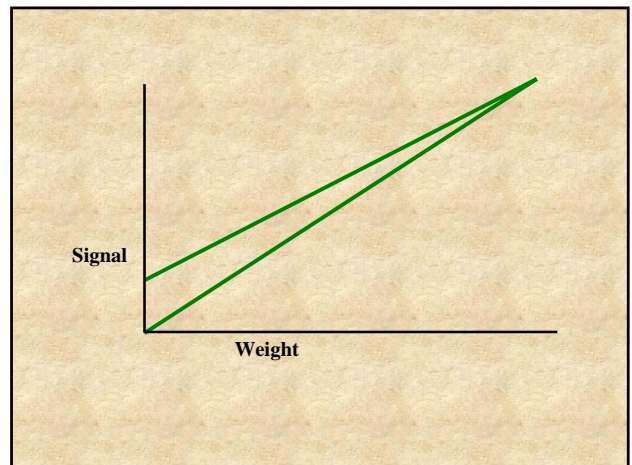
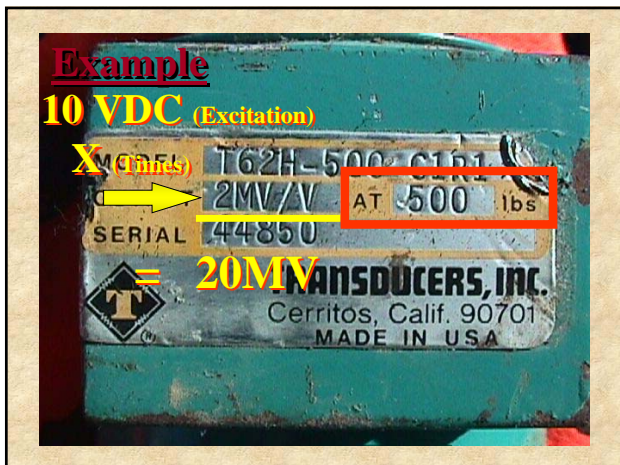
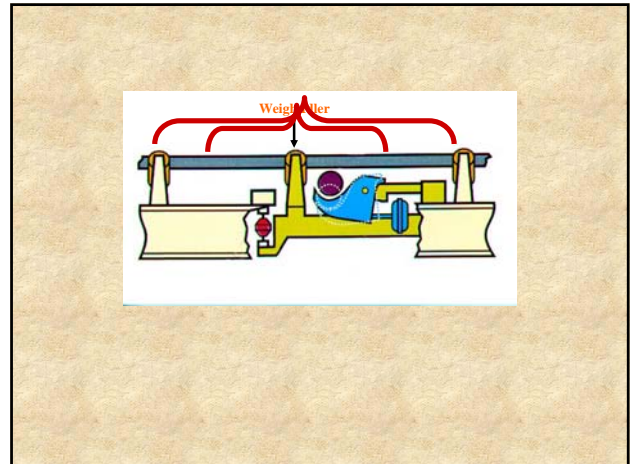
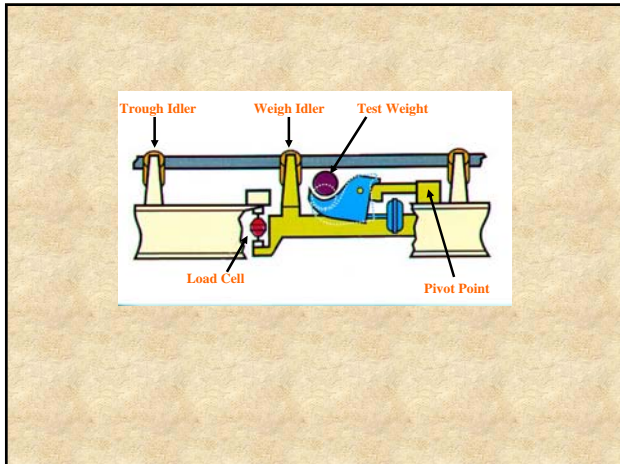
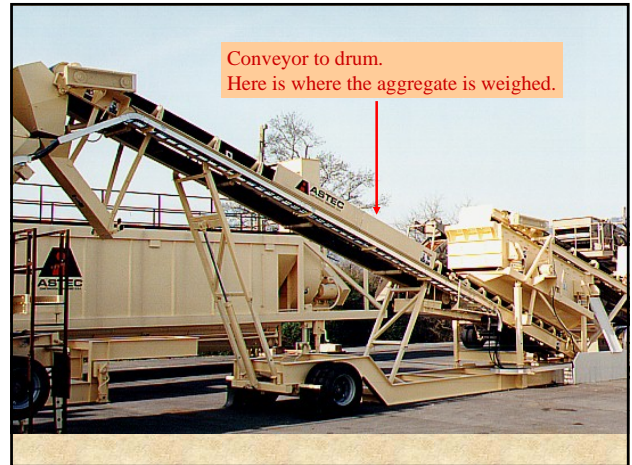
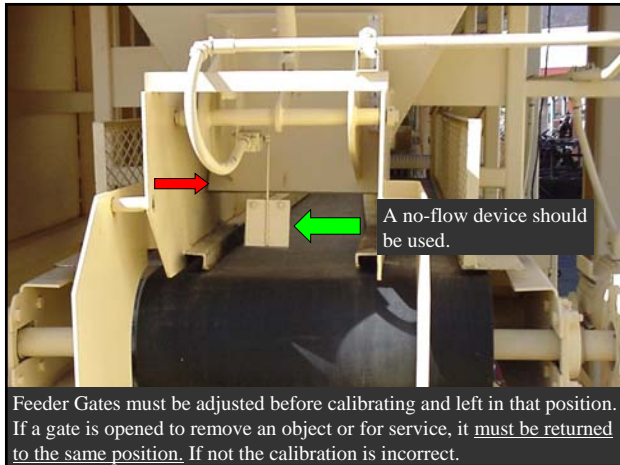


Volumetric Aggregate Feeders

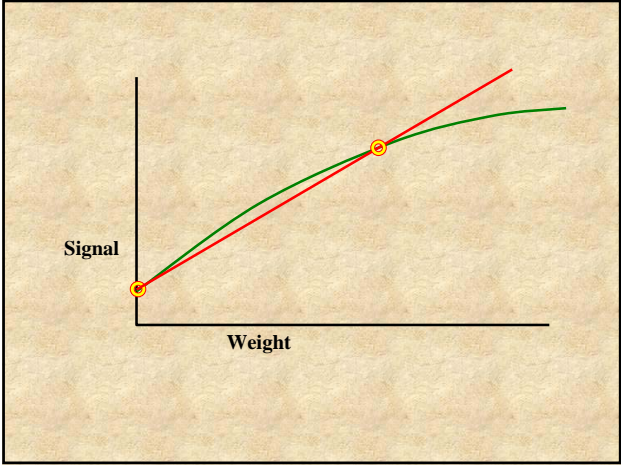
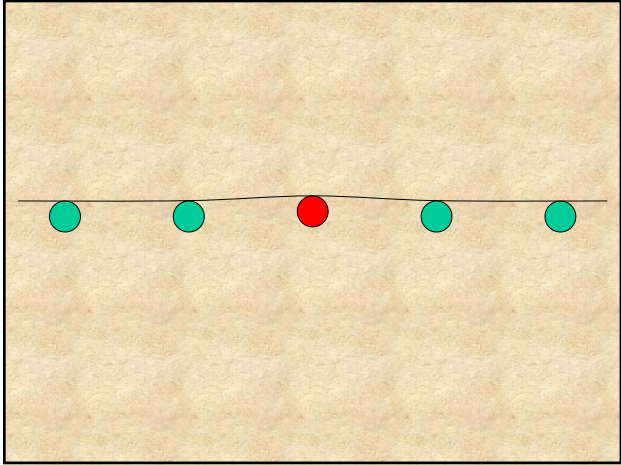
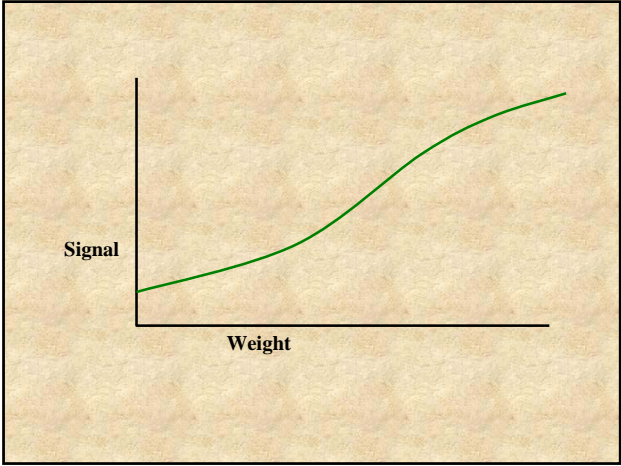
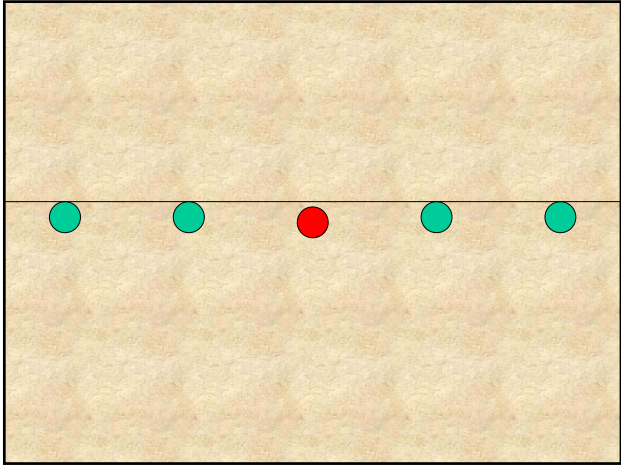
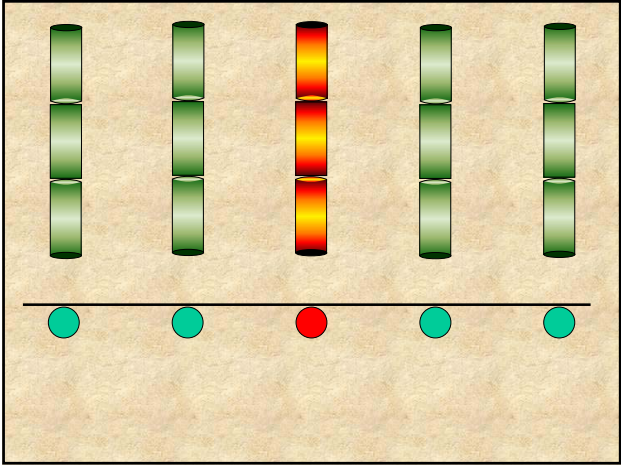
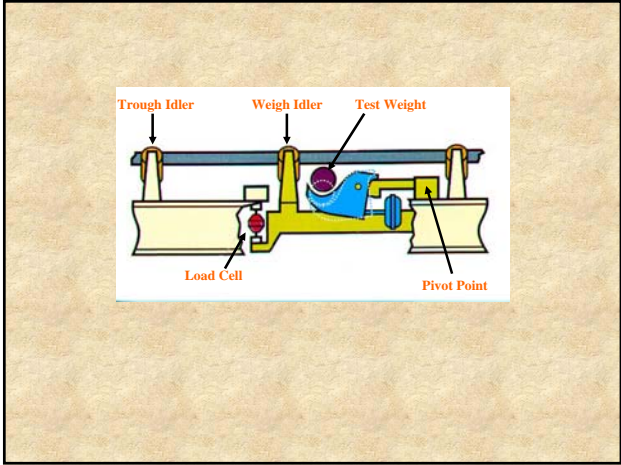
- A Tachometer feedback from the feeder tail shaft is preferred.
- If the belt slips it shows.
- Linearity (or accuracy) is near perfect.
- Accuracy is calculated to 1,200 pulses per revolution.

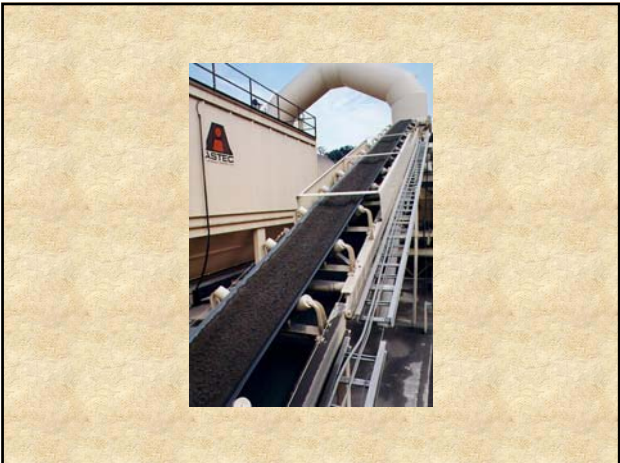
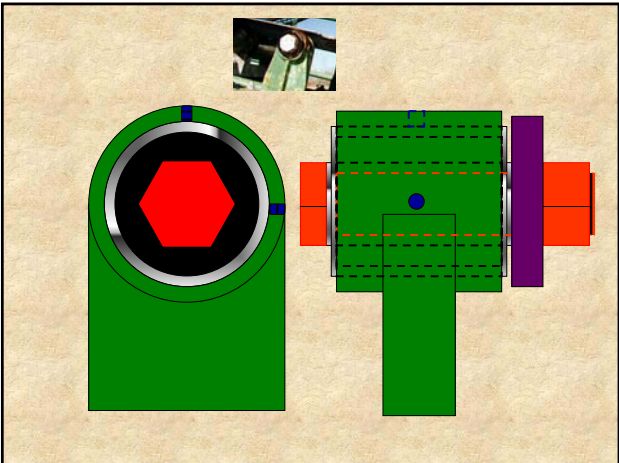
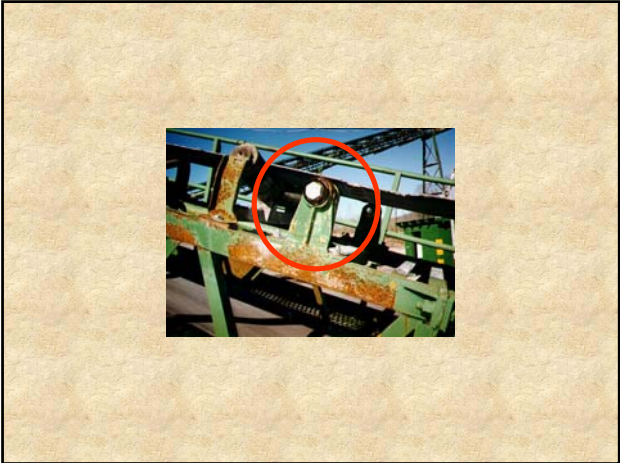
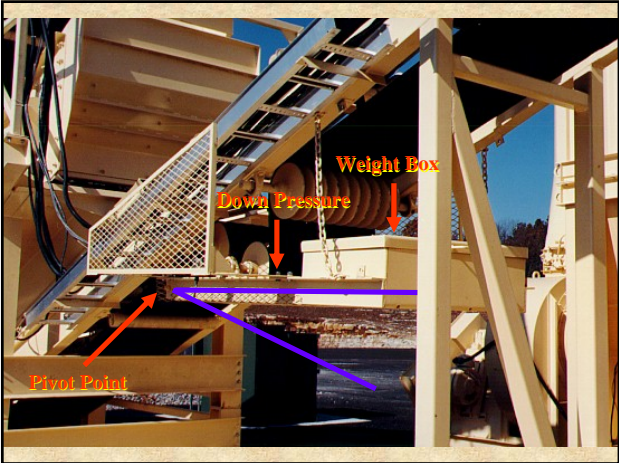
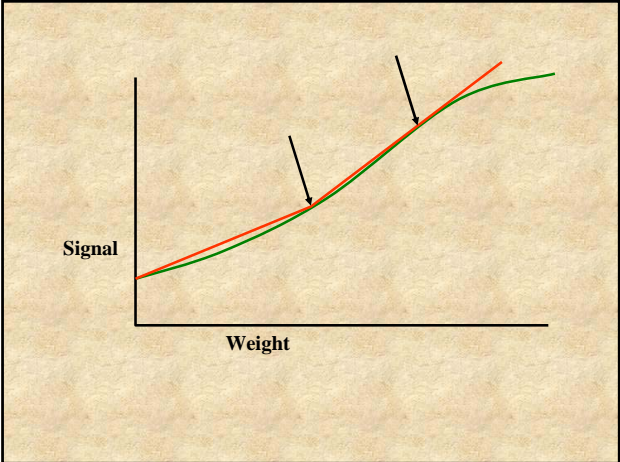
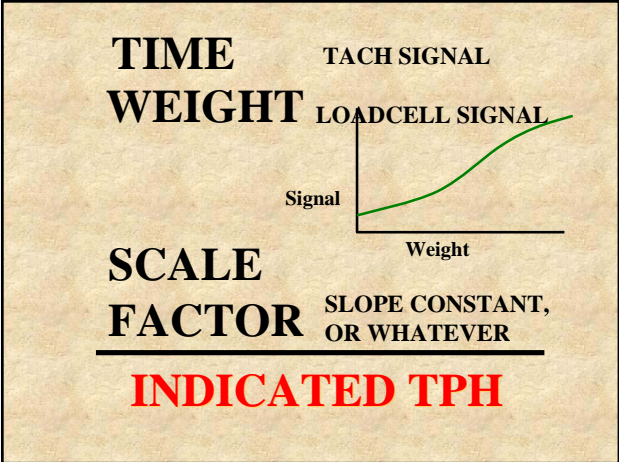
Tachs usually work or not. Less guesswork.

SEAUPG 2005 CONFERENCE - NASHVILLE, TN

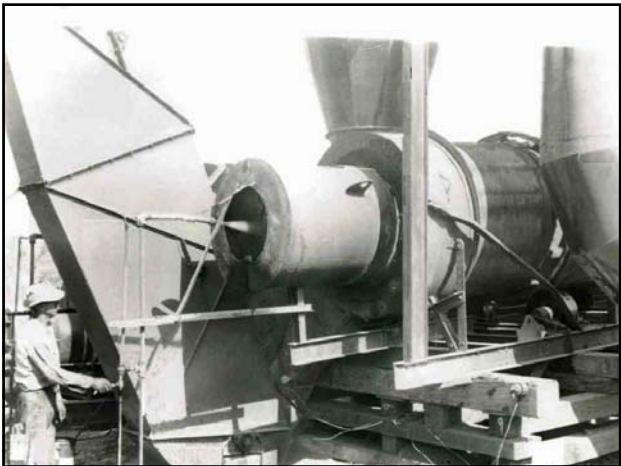
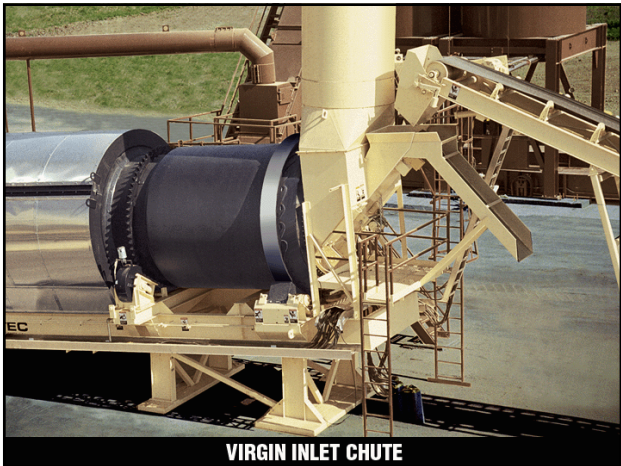
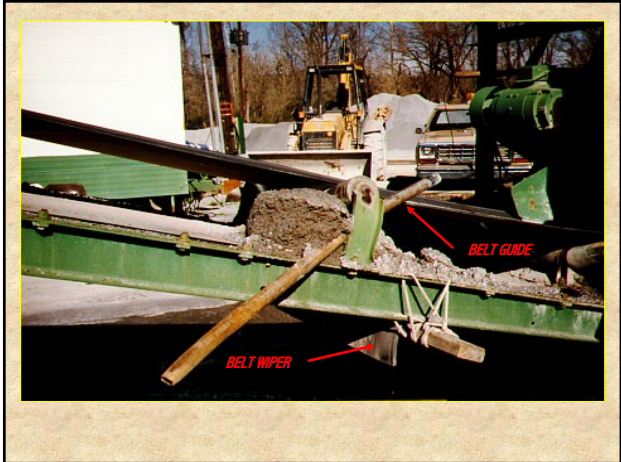


SEAUPG 2005 CONFERENCE - NASHVILLE, TN

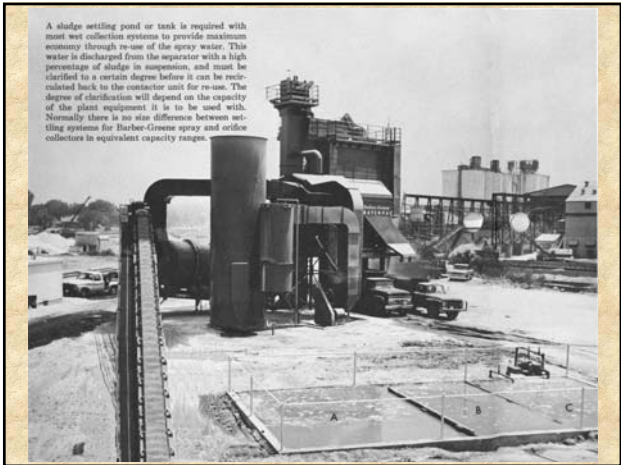
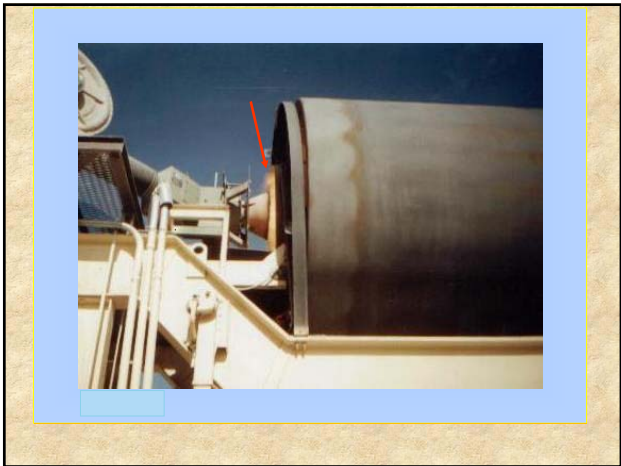




SEAUPG 2005 CONFERENCE - NASHVILLE, TN



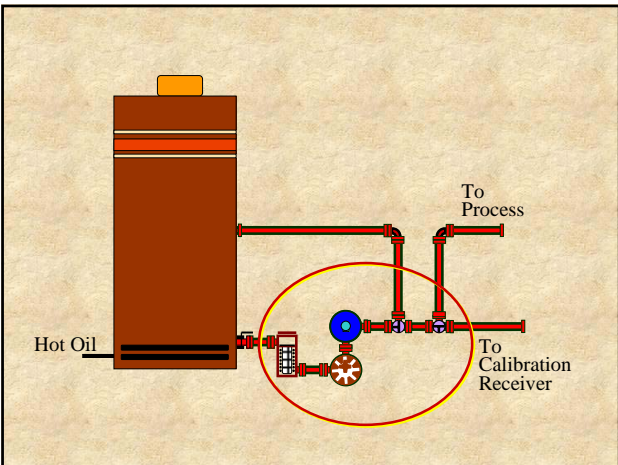
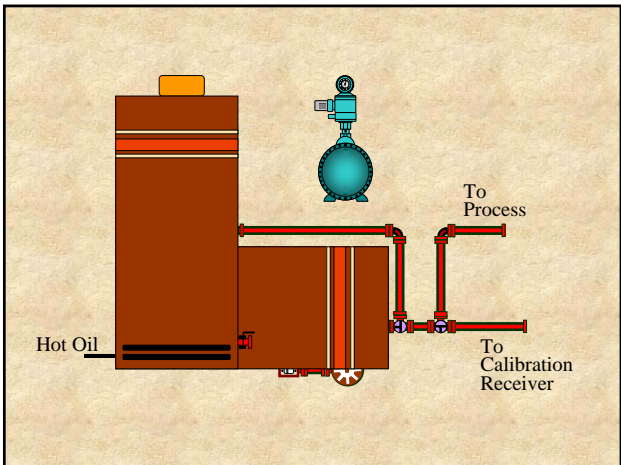
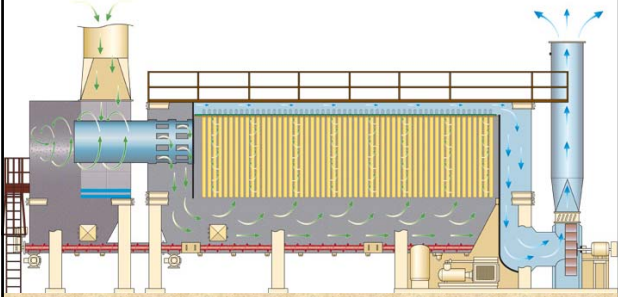
SEAUPG 2005 CONFERENCE - NASHVILLE, TN



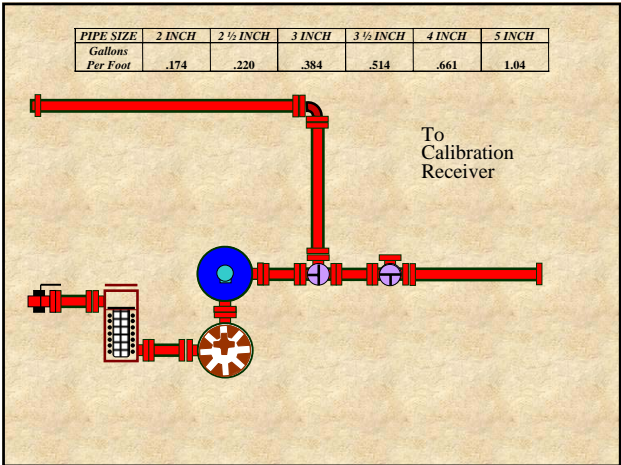
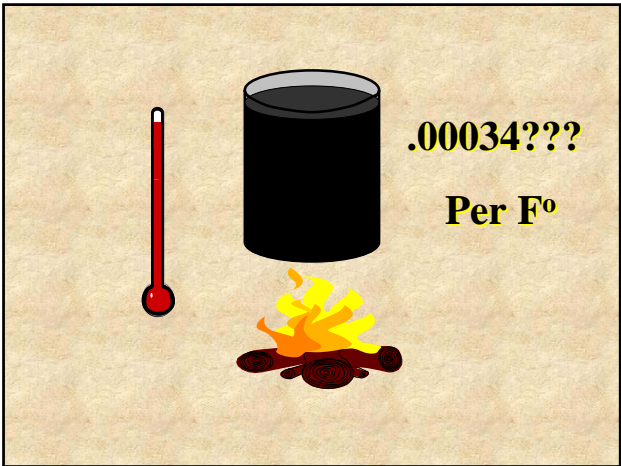
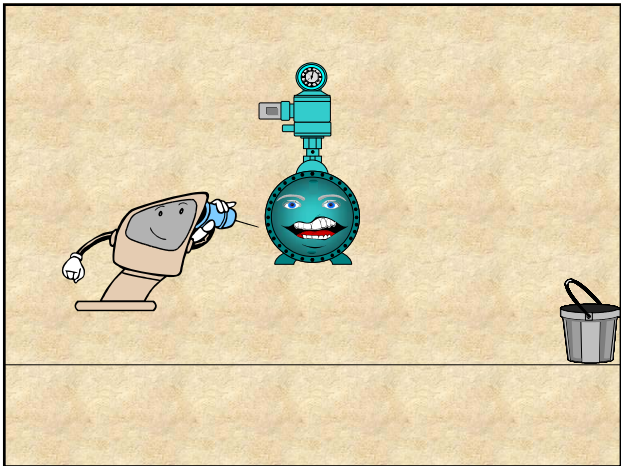
Baghouse



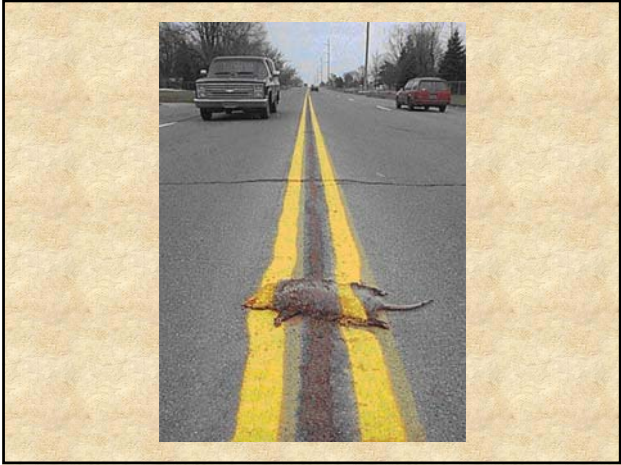
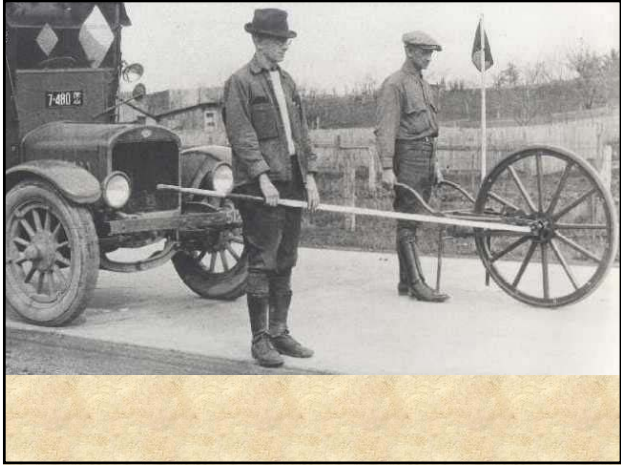
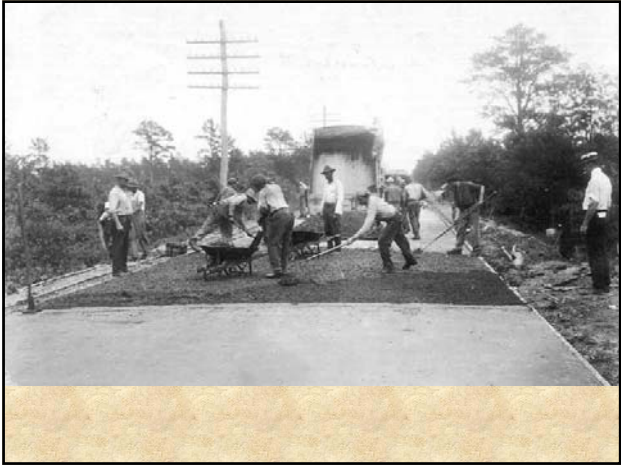
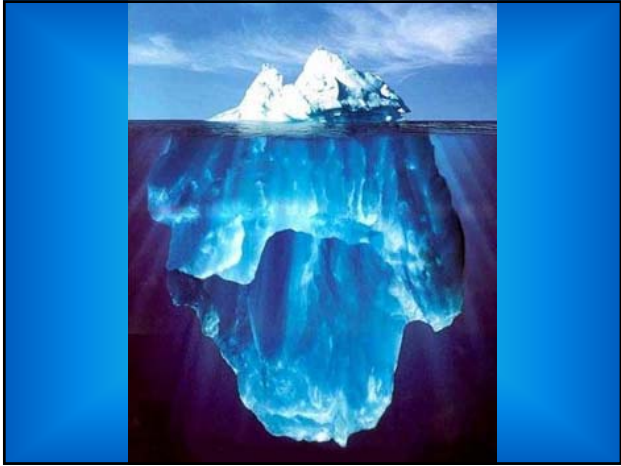
Baghouse Airflow



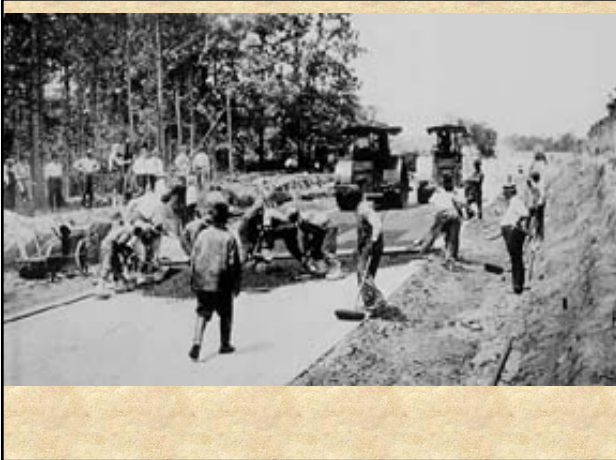
SEAUPG 2005 CONFERENCE - NASHVILLE, TN



SEAUPG 2005 CONFERENCE - NASHVILLE, TN



SEAUPG 2005 CONFERENCE - NASHVILLE, TN



Asphalt Plants

- Today's Topics:
- Preventative Maintenance
- Emissions Reduction Equipment & Controls.

With Johnny Tucker – Astec service .

Do You Have a Maintenance Program in Place?

- You need to develop a consistent maintenance program.
- A visual inspection should be performed daily.
- Records should be kept of problems and repairs.
- Your personnel need to know what is expected of them. Put it on paper!

Some things we know about, but sometimes forget or miss.

- Greasing
- Baghouse Inspection
- Oil in pneumatic (air) oilers.
- Drive belt wear and tension.
- Adjusting Drag or Drive chains.
- Housekeeping.
- This list is Endless.

Look for signs of problems.

- A daily walk around the plant site should be a plant foreman's first action of the day.
- Check the hot oil heater. Cold AC won't mix.
- Watch for signs of wear.
- Look for anything out of the ordinary.
- Mostly, just go look!

Why 'Preventative' Maintenance?

Minimize plant downtime.

- Reduce major repair time and costs.
- Increase profits.

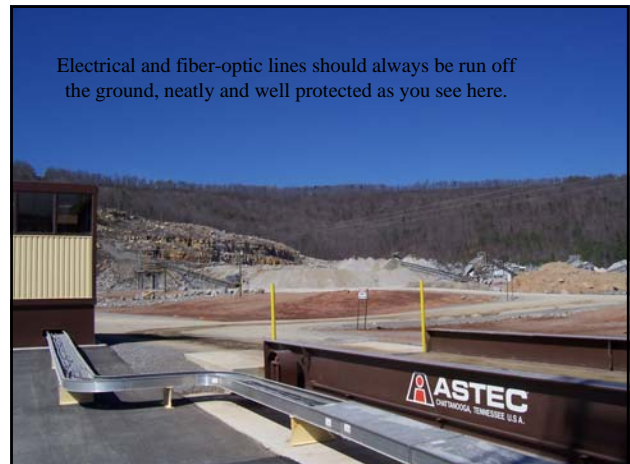
SEAUPG 2005 CONFERENCE - NASHVILLE, TN

From the feeders to the silos.

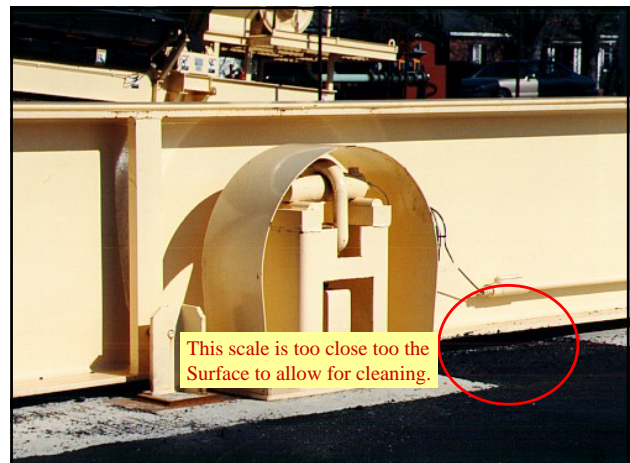
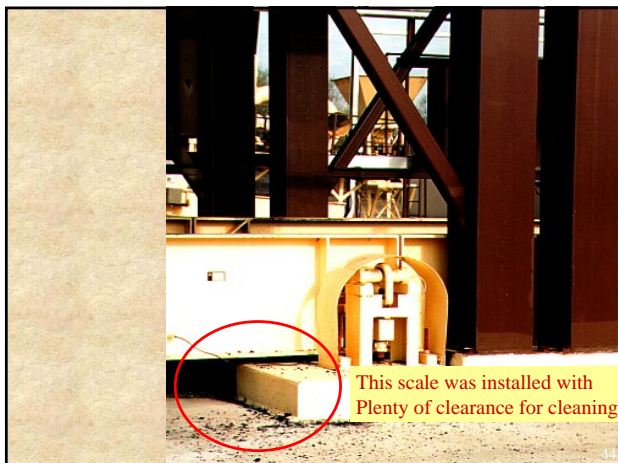
- The stockpiles and aggregate conveyors.
- The Dryer and Burner.
- The Baghouse.
- The AC metering pump.
- The Drag and Silos.
- Cost in \$\$.

Plant Maintenance

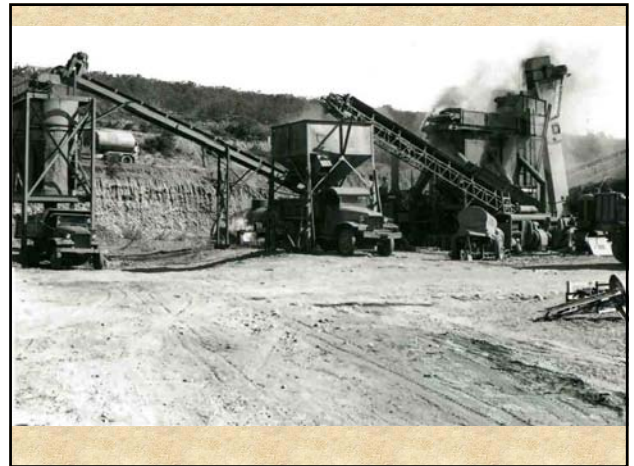
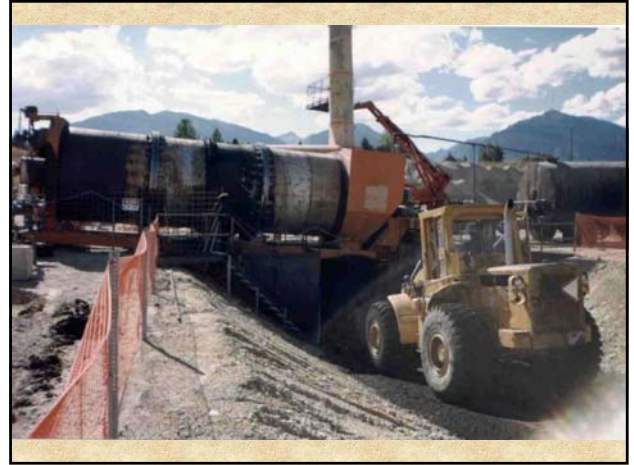
Stockpiles



Electrical and fiber-optic lines should always be run off the ground, neatly and well protected as you see here.



SEAUPG 2005 CONFERENCE - NASHVILLE, TN



SEAUPG 2005 CONFERENCE - NASHVILLE, TN

