

## Economic impact

The Tacoma LNG Facility will provide significant economic benefits to Tacoma, Pierce County, and the entire South Sound region. In addition to helping local employers like TOTE remain competitive and maintain hundreds of family-wage jobs, the LNG facility will create at least 150 construction jobs and 18 permanent jobs. The economic activity from the project will create another 125 permanent jobs in the region. It will also generate millions of dollars in tax revenue for local schools, city services including fire safety and roads, and other state and local government services.



## Review and approval process

The Tacoma LNG Facility is going through an extensive review and approval process with federal, state, and local government agencies. PSE submitted its Draft Environmental Impact Statement (DEIS) to the City of Tacoma in early spring 2015, with the public comment period anticipated in summer 2015.

## More information

Email: [tacomacleanlng@pse.com](mailto:tacomacleanlng@pse.com)  
Phone: 253-395-6333



Puget Sound Energy  
P.O. Box 97034  
Bellevue, WA 98009-9734  
[pse.com](http://pse.com)



## Tacoma LNG facility



At the Port of Tacoma



PSE customer the Renshaws





PSE's Tacoma LNG Facility, to be completed by late 2018

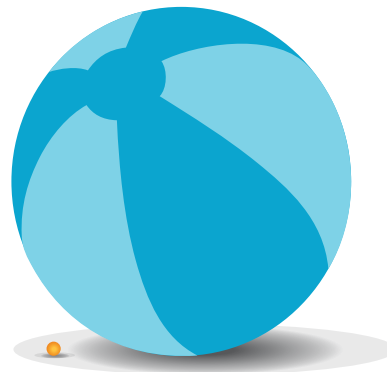
## Project summary

Puget Sound Energy, Washington's oldest energy company, is planning a liquefied natural gas (LNG) facility at the Port of Tacoma to provide clean and cost-effective natural gas for PSE's customers and to provide a cleaner fuel for maritime vessels owned by TOTE and other local employers. The project is expected to be fully operational by late 2018.



## Safety

LNG is simply the liquid form of the same natural gas already used in millions of homes, businesses, and vehicles. When cooled, natural gas is reduced to a liquid with one six-hundredth the volume of gas, making it easier to store and transport. It is not explosive or flammable in its liquid state and when warmed, simply returns to a gas quickly dissipating in the atmosphere. More than 100 LNG production, storage, and fueling facilities currently operate in the U.S. – including one PSE has owned and operated in Gig Harbor for more than a decade.



When natural gas is liquified, it shrinks by more than 600 times.

The difference in size is similar to a **beach ball** compared to a **ping pong ball**.

## Environmental benefits

LNG is a much cleaner alternative to conventional fuels, such as diesel or bunker oil. Switching from diesel to LNG reduces greenhouse gas emissions by up to 30 percent and eliminates particulate emissions. This helps improve air quality and reduces health risks. It also allows local employers like TOTE to comply with new, stricter low-sulfur emission standards. Use of LNG greatly minimizes the potential for harmful fuel spills that could damage the waters of Commencement Bay and Puget Sound.

