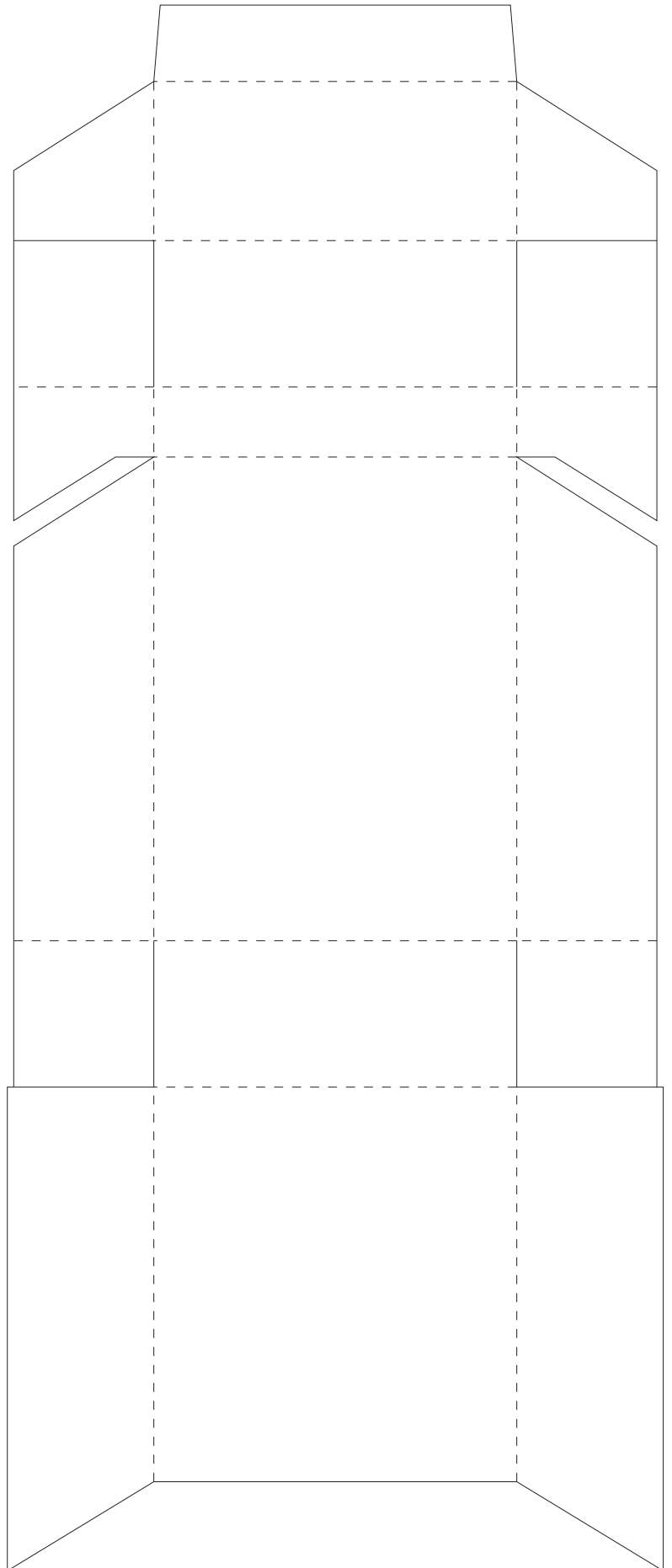
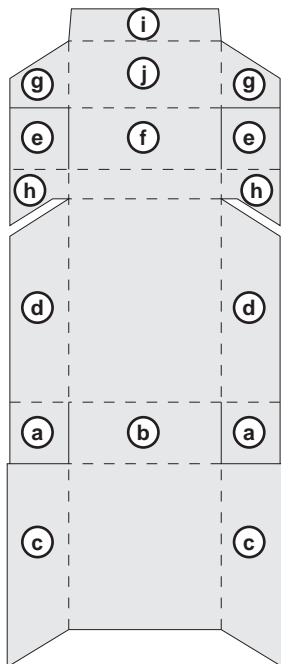


Cut Out and Make Cigarette Packet (20)

- 1 Print out this template onto paper or card.
I suppose you could use aluminium or steel or whatever. I've only tried card and paper.
- 0 Draw, paint or stick photos of your family and friends onto the packet. Remember, some flaps won't be visible when you put the whole thing together. Apart from the main faces of the packet, [b], [c], [f], [g] and [j] will be visible, so don't waste your talent on the other bits.
- 1 Cut along all the solid lines - don't cut the dashed lines.
- 2 Fold all of the dotted lines. All of them are 'mountain folds' - i.e. they fold away from you, with the dashed line on top.
- 3 Make the main box by sticking the bottom tabs [a] to the inside of the bottom of the box [b].
- 4 Now stick the sides [c] over the side flaps [d].
- 5 The lid: stick the flaps [e] to the underside of the top of the packet [f].
- 6 Stick the sides of the lid [g] over the flaps [h].
- 7 Finally, fold back the lip [i] under the front of the lid [j] and stick.
- 8 Commercial packets have a little strengthening piece which is stuck inside the body of the packet.



PRESSURE.TO

<http://www.pressure.to>