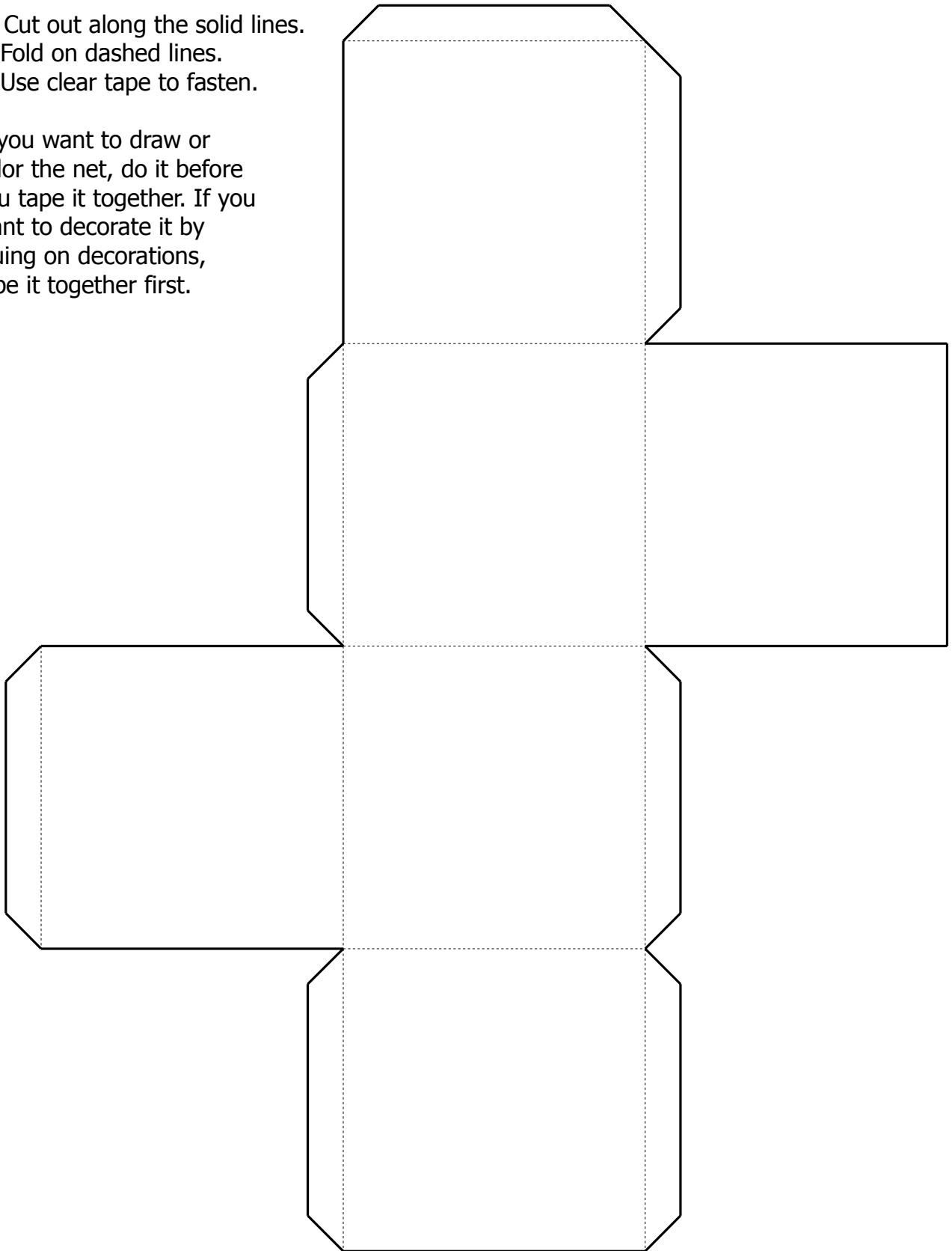


Geometric Net of a Cube

1. Cut out along the solid lines.
2. Fold on dashed lines.
3. Use clear tape to fasten.

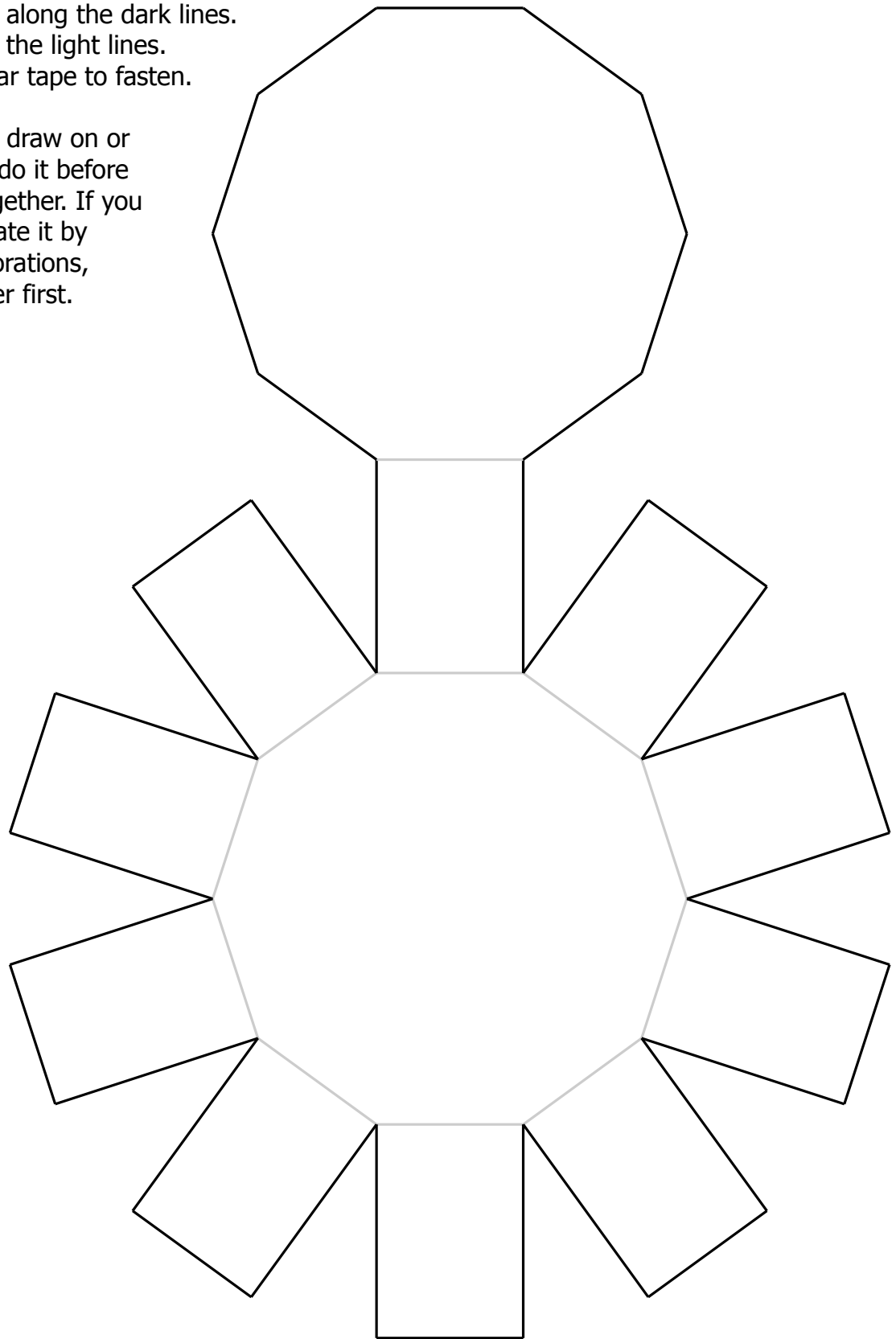
If you want to draw or color the net, do it before you tape it together. If you want to decorate it by gluing on decorations, tape it together first.



Geometric Net of a Decagonal Prism

1. Cut out along the dark lines.
2. Fold on the light lines.
3. Use clear tape to fasten.

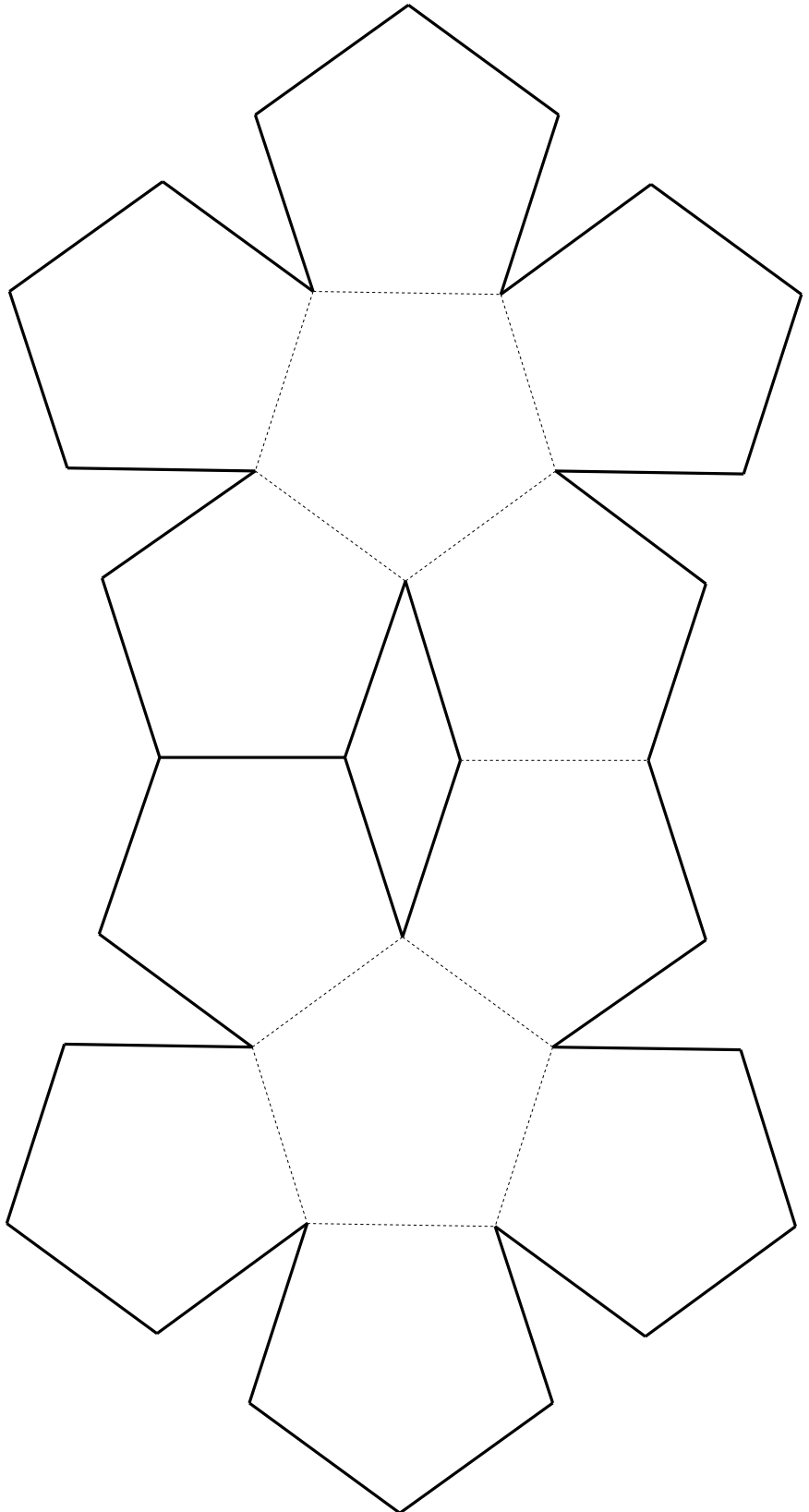
If you want to draw on or color the net, do it before you tape it together. If you want to decorate it by gluing on decorations, tape it together first.



Geometric Net of a Regular Dodecahedron

1. Cut out along solid lines.
2. Fold on dotted lines.
3. Use clear tape to fasten.

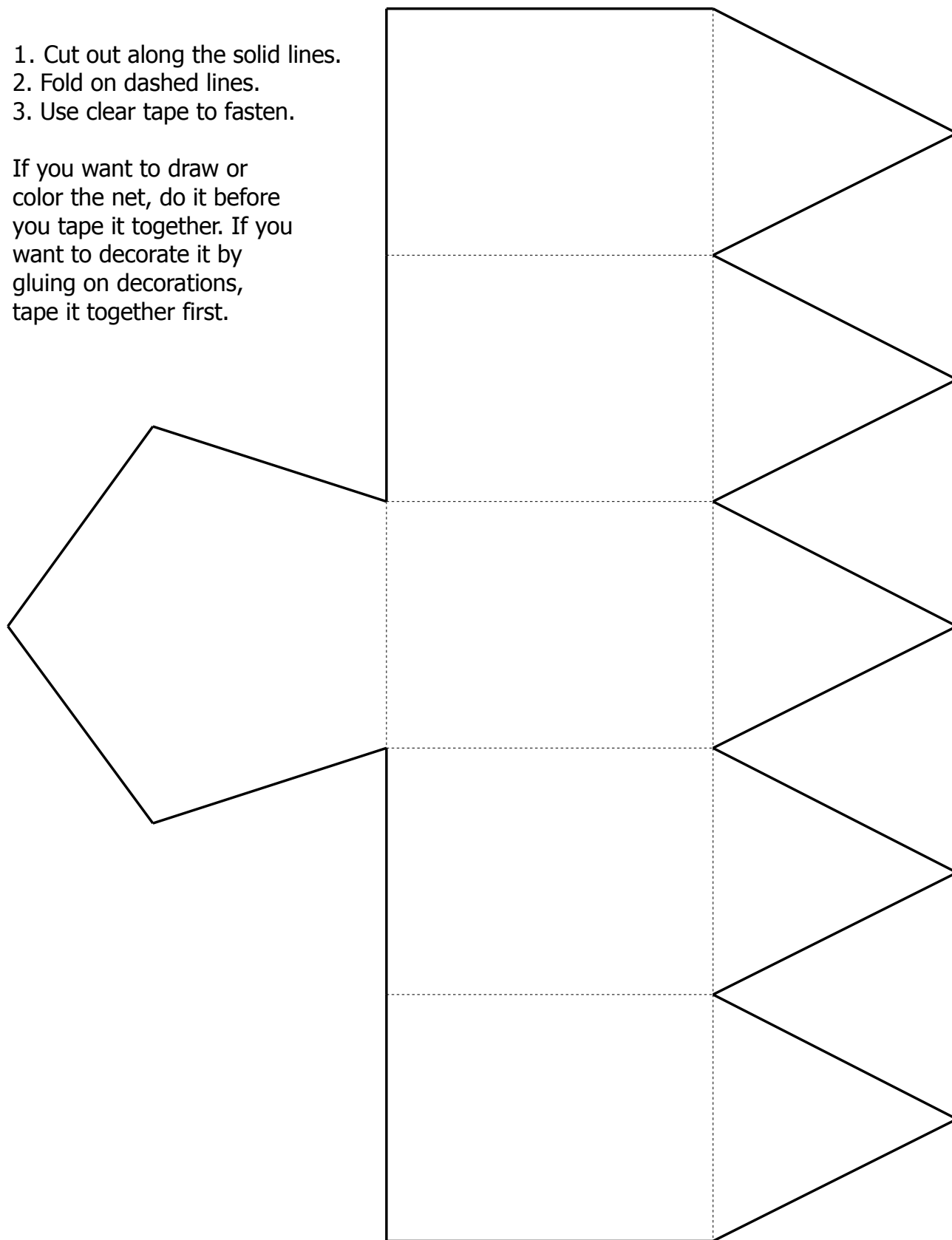
If you want to draw or color the net, do it before you tape it together. If you want to decorate it by gluing on decorations, tape it together first.



Geometric Net of an Elongated Pentagonal Pyramid

1. Cut out along the solid lines.
2. Fold on dashed lines.
3. Use clear tape to fasten.

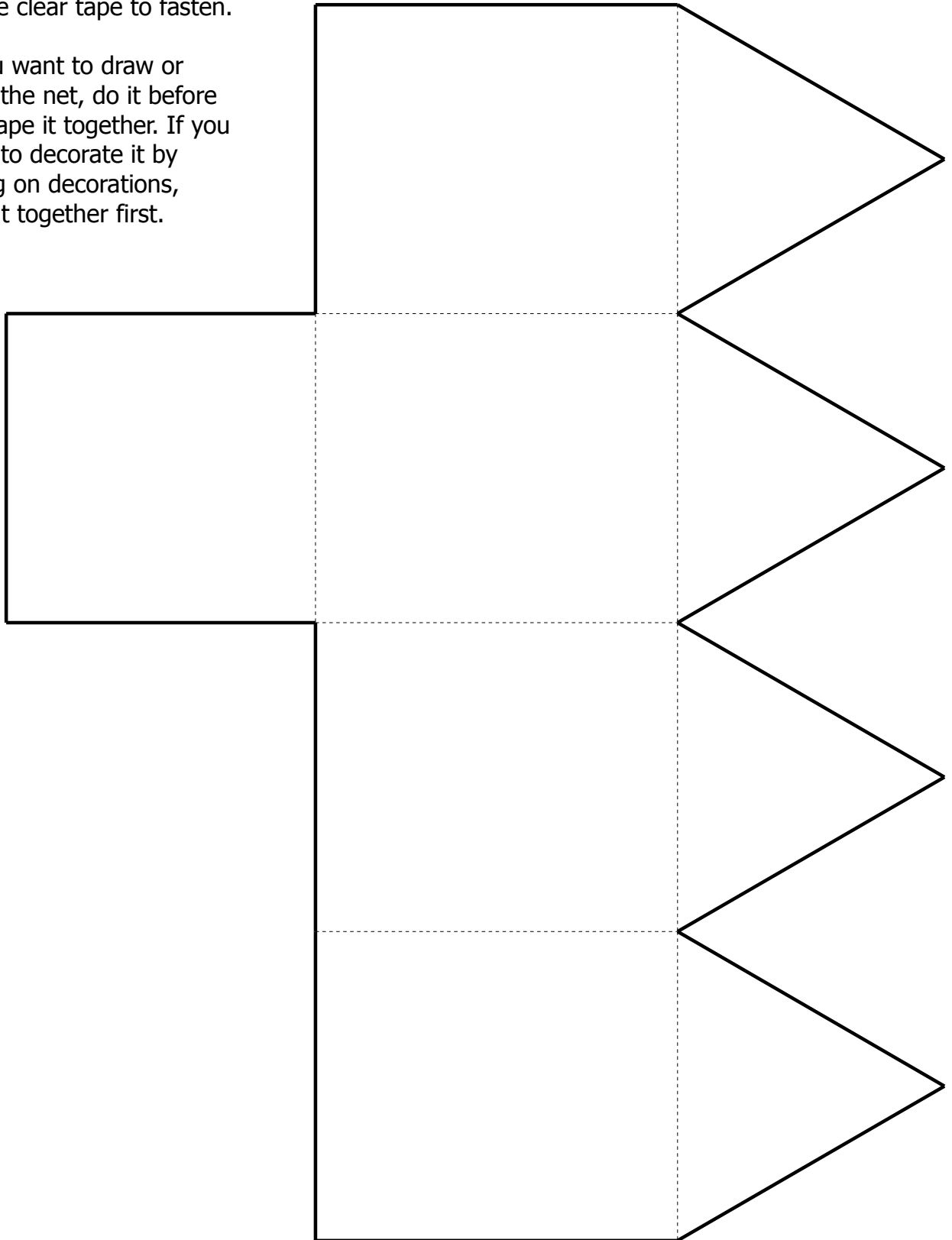
If you want to draw or color the net, do it before you tape it together. If you want to decorate it by gluing on decorations, tape it together first.



Geometric Net of an Elongated Square Pyramid

1. Cut out along the solid lines.
2. Fold on dashed lines.
3. Use clear tape to fasten.

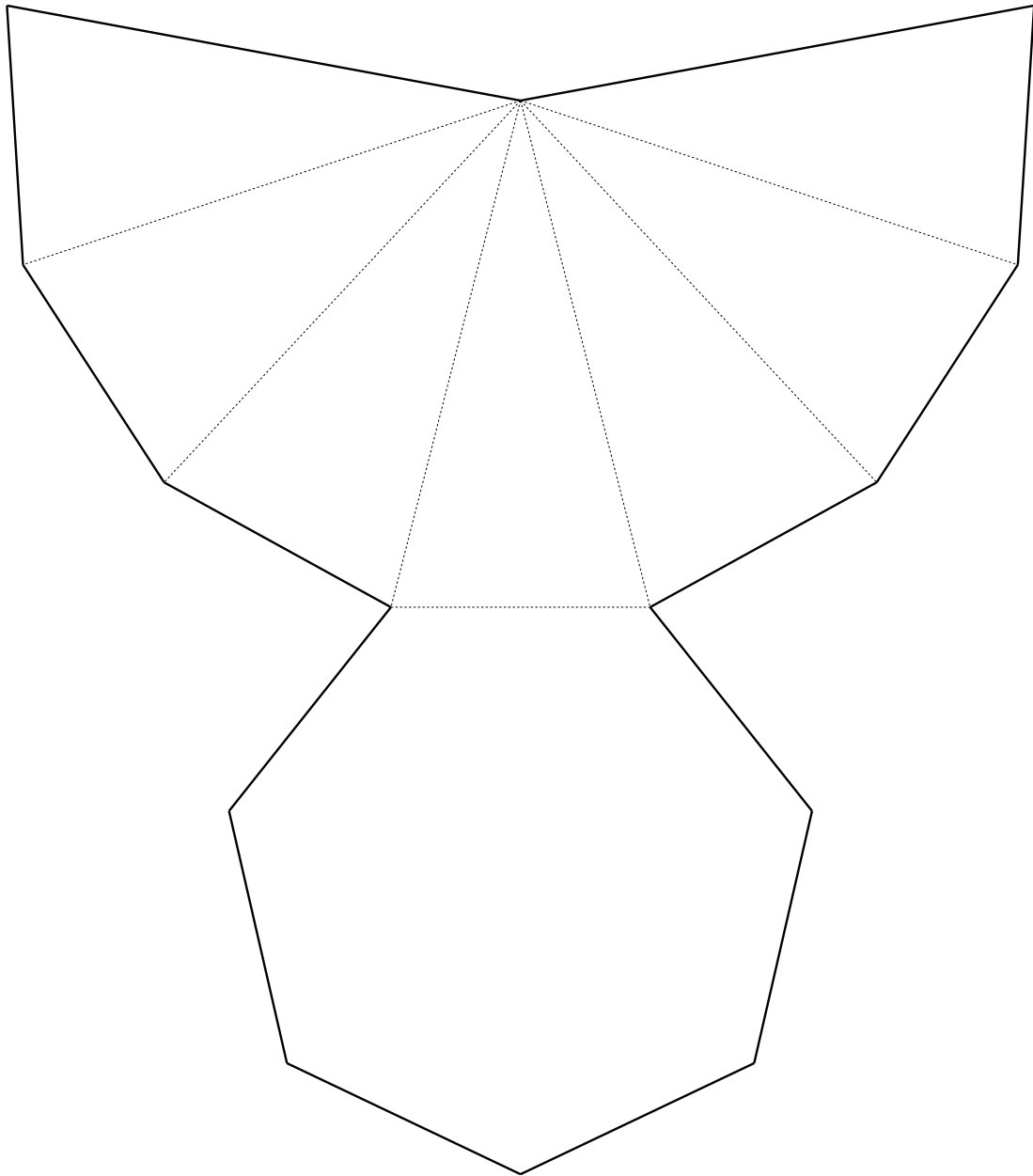
If you want to draw or color the net, do it before you tape it together. If you want to decorate it by gluing on decorations, tape it together first.



Geometric Net of a Heptagonal Pyramid

1. Cut out along the solid lines.
2. Fold on dashed lines.
3. Use clear tape to fasten.

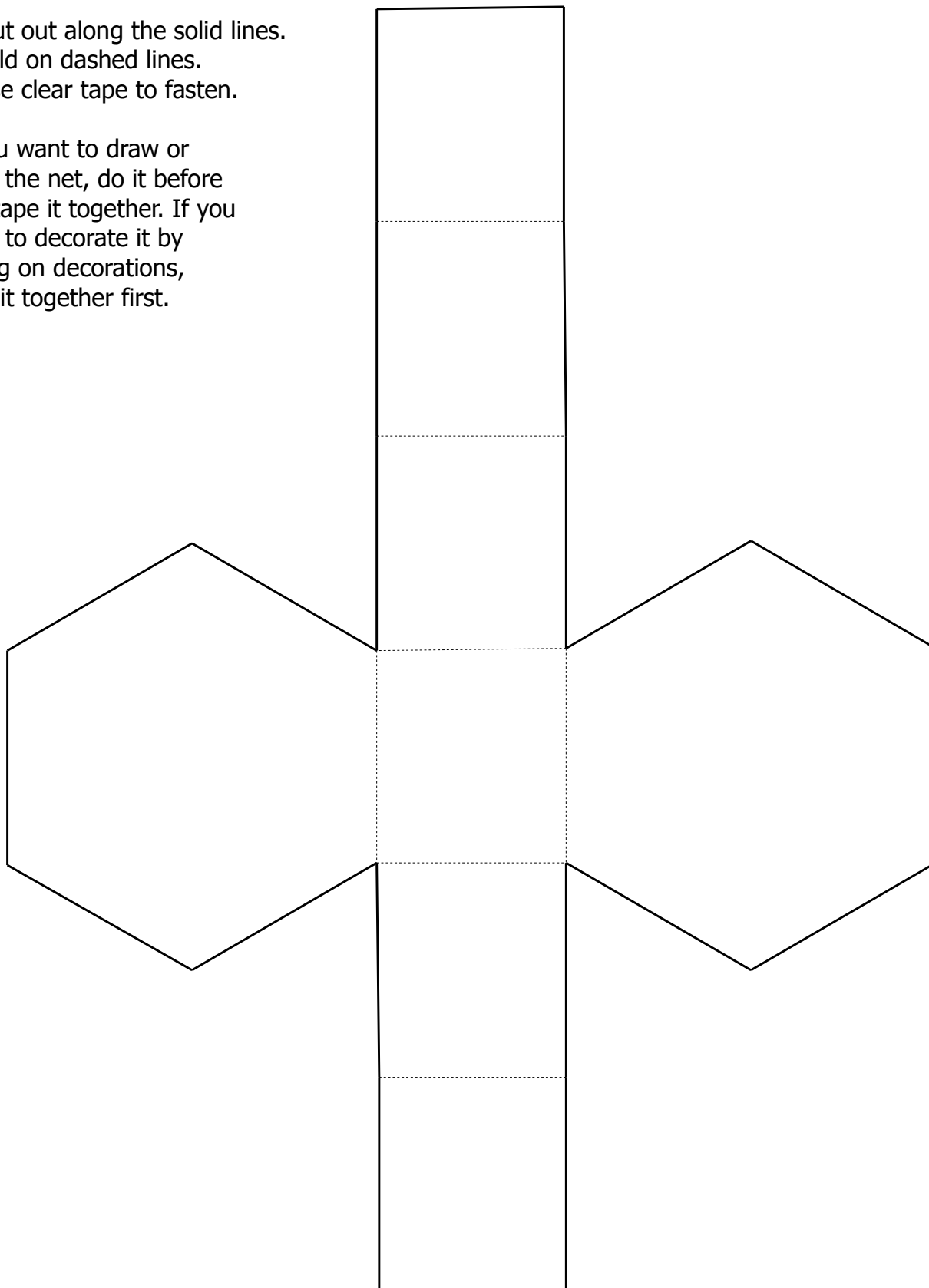
If you want to draw or color the net, do it before you tape it together. If you want to decorate it by gluing on decorations, tape it together first.



Geometric Net of a Hexagonal Prism

1. Cut out along the solid lines.
2. Fold on dashed lines.
3. Use clear tape to fasten.

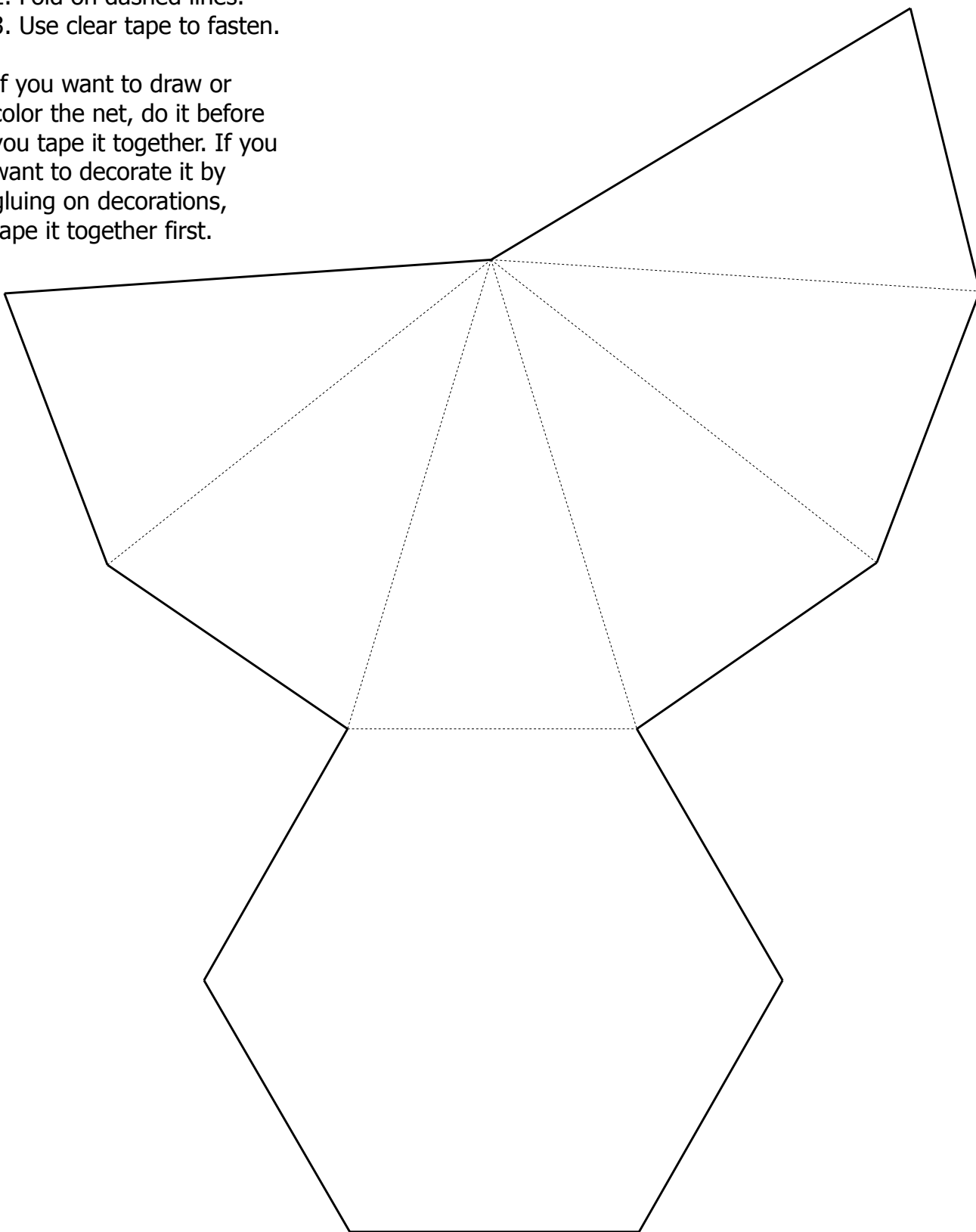
If you want to draw or color the net, do it before you tape it together. If you want to decorate it by gluing on decorations, tape it together first.



Geometric Net of a Hexagonal Pyramid

1. Cut out along the solid lines.
2. Fold on dashed lines.
3. Use clear tape to fasten.

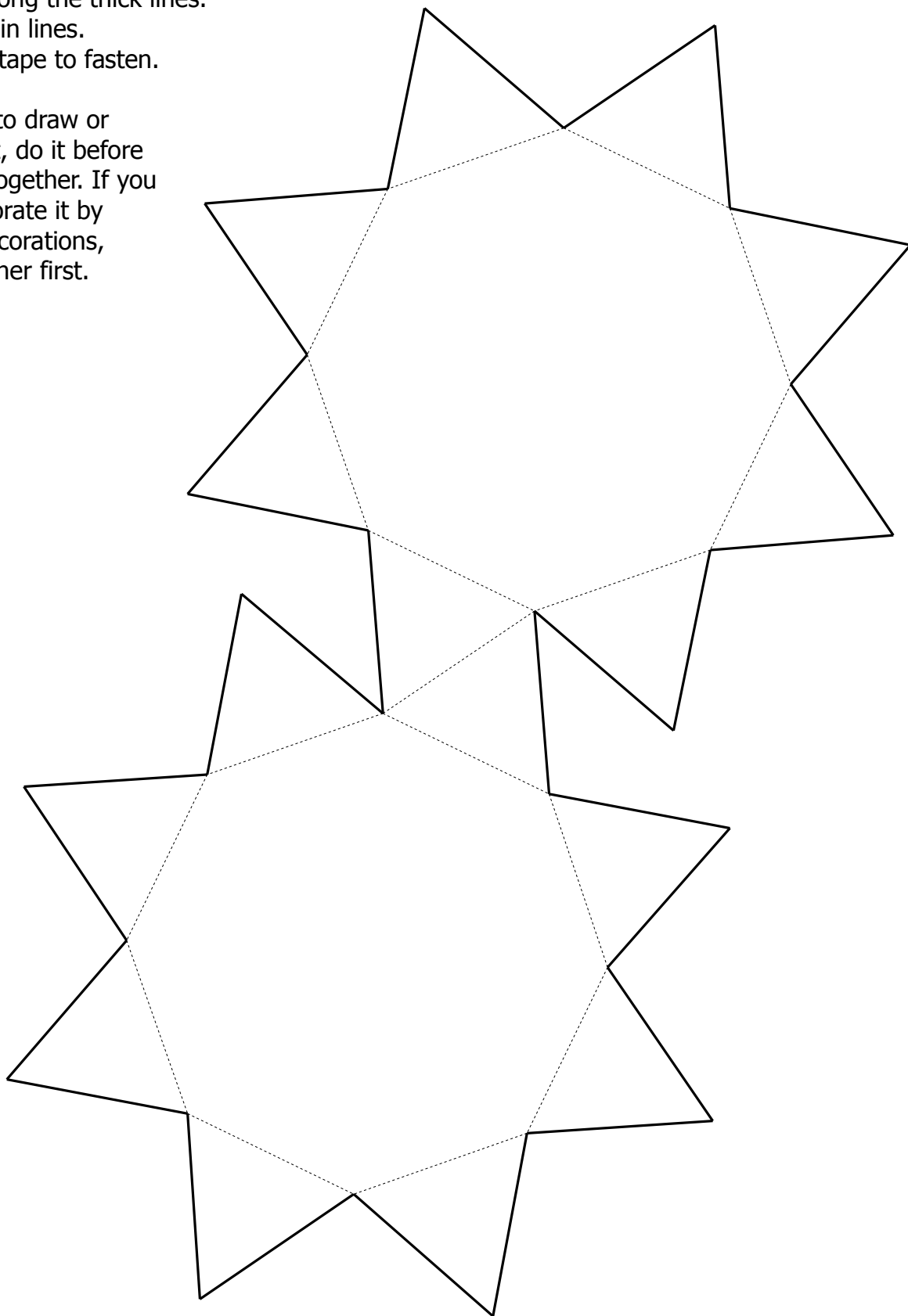
If you want to draw or color the net, do it before you tape it together. If you want to decorate it by gluing on decorations, tape it together first.



Geometric Net of an Octagonal Antiprism

1. Cut out along the thick lines.
2. Fold on thin lines.
3. Use clear tape to fasten.

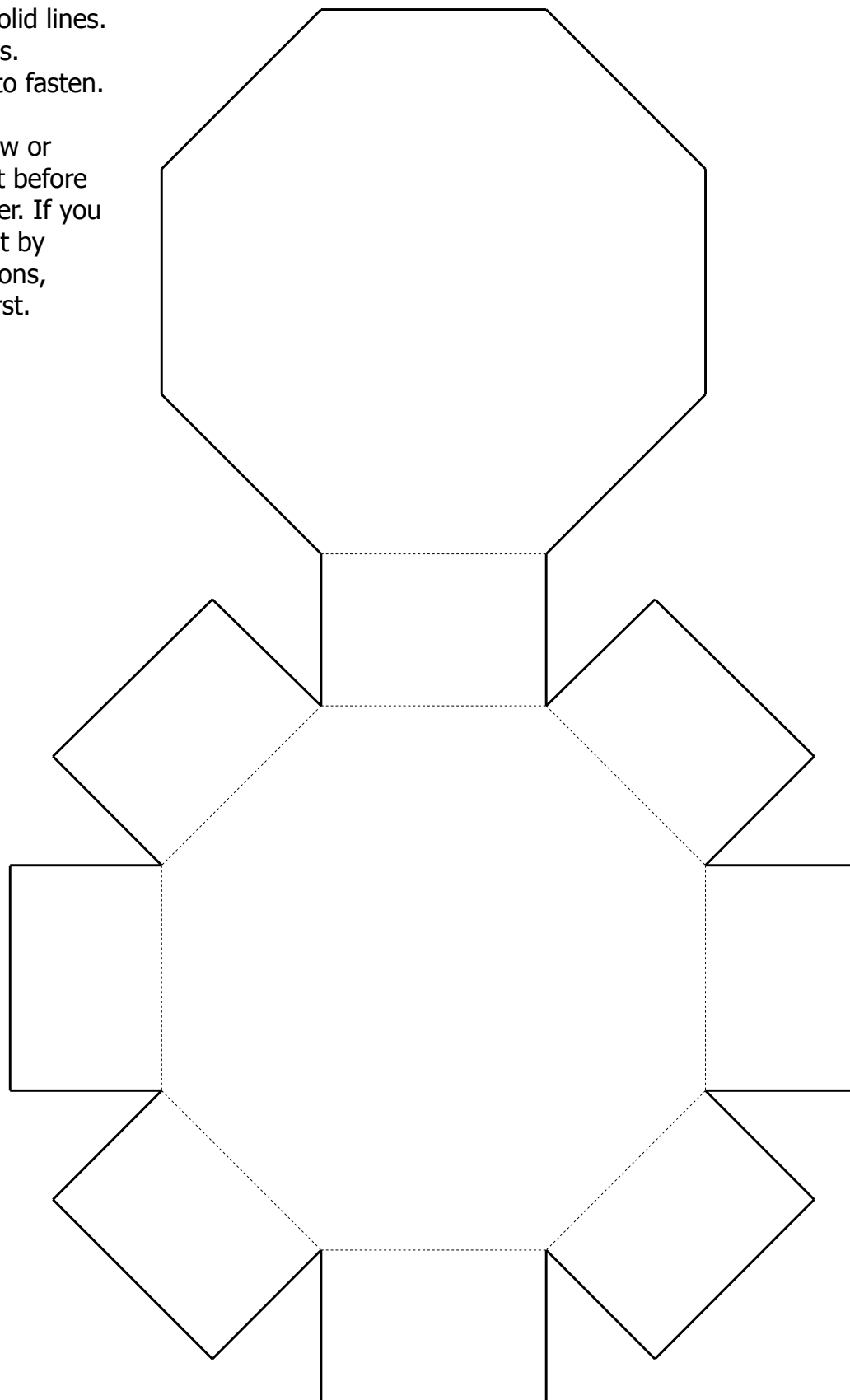
If you want to draw or color the net, do it before you tape it together. If you want to decorate it by gluing on decorations, tape it together first.



Geometric Net of an Octagonal Prism

1. Cut out along solid lines.
2. Fold on the lines.
3. Use clear tape to fasten.

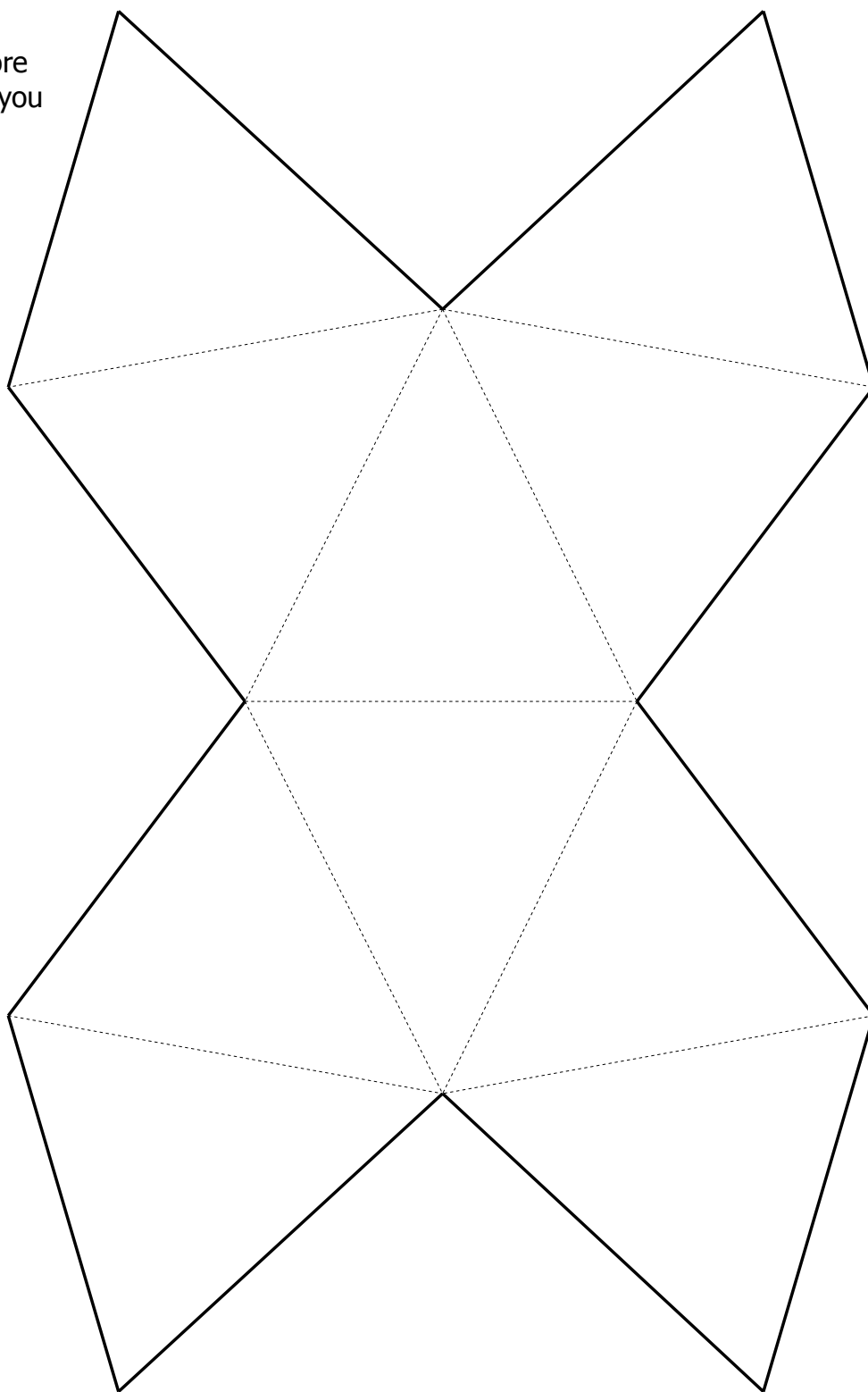
If you want to draw or color the net, do it before you tape it together. If you want to decorate it by gluing on decorations, tape it together first.



Geometric Net of a Pentagonal Dipyramid

1. Cut out along the solid lines.
2. Fold on dashed lines.
3. Use clear tape to fasten.

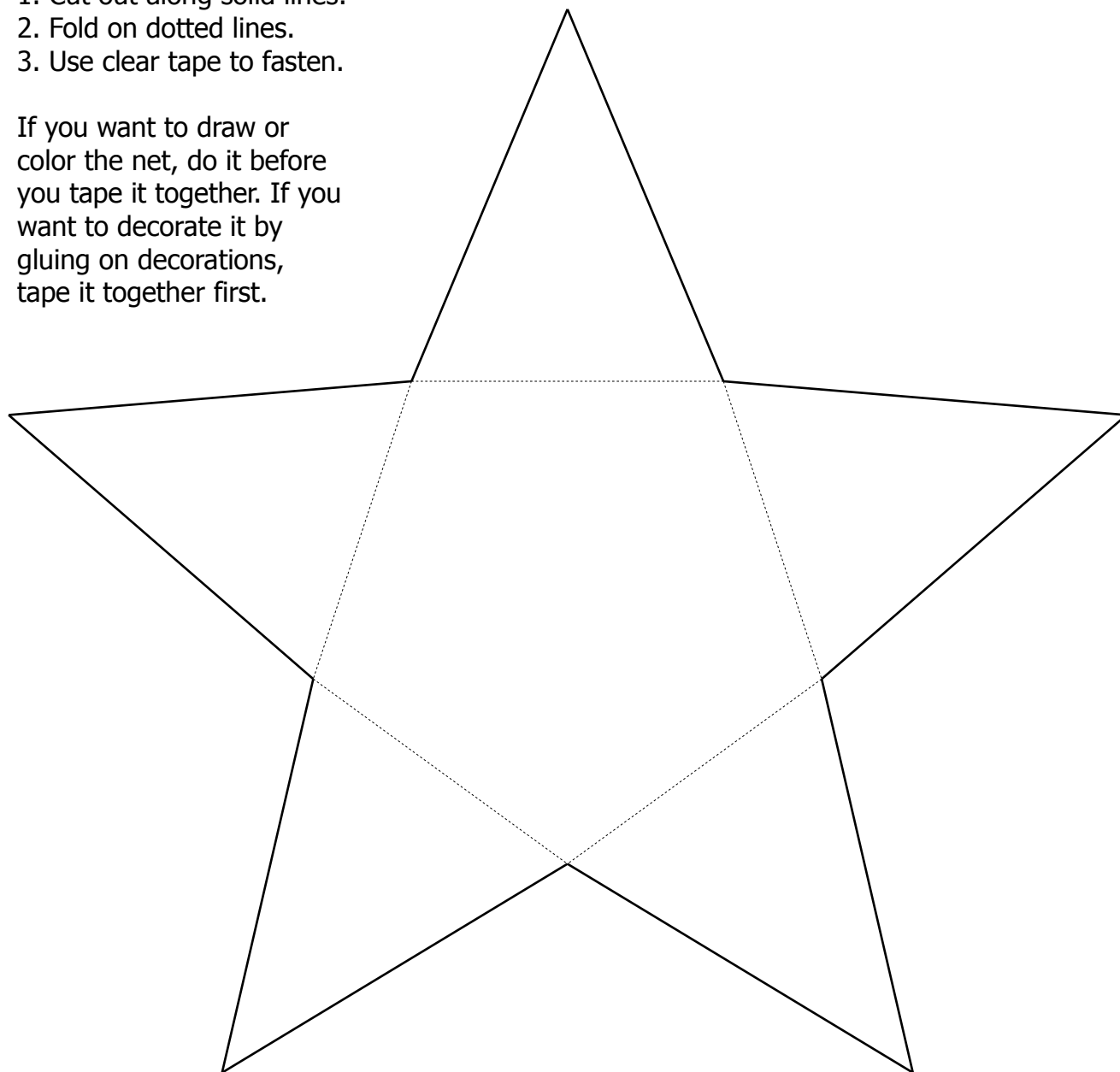
If you want to draw or color the net, do it before you tape it together. If you want to decorate it by gluing on decorations, tape it together first.



Geometric Net of a Pentagonal Pyramid

1. Cut out along solid lines.
2. Fold on dotted lines.
3. Use clear tape to fasten.

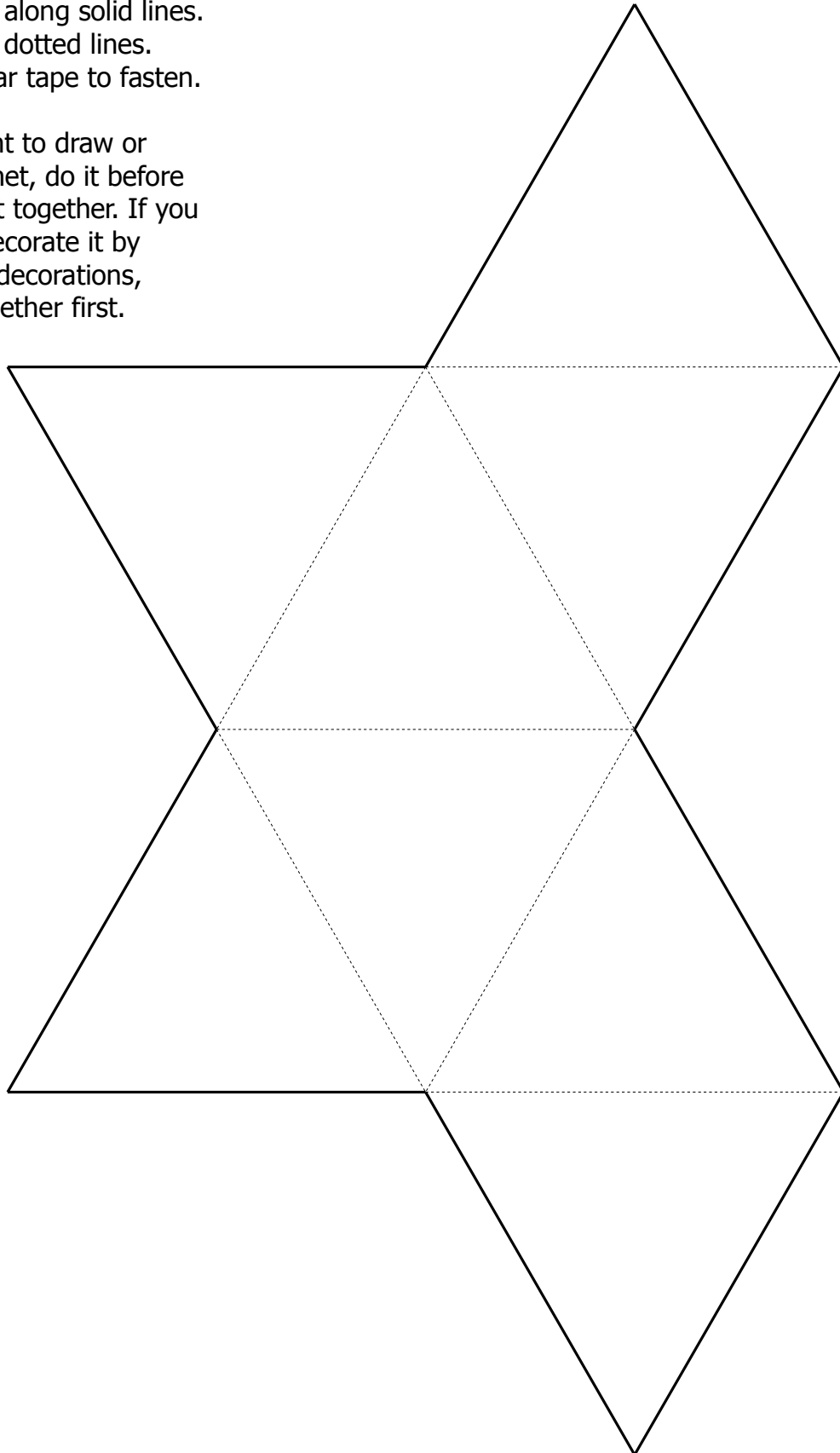
If you want to draw or color the net, do it before you tape it together. If you want to decorate it by gluing on decorations, tape it together first.



Geometric Net of a Regular Octahedron

1. Cut out along solid lines.
2. Fold on dotted lines.
3. Use clear tape to fasten.

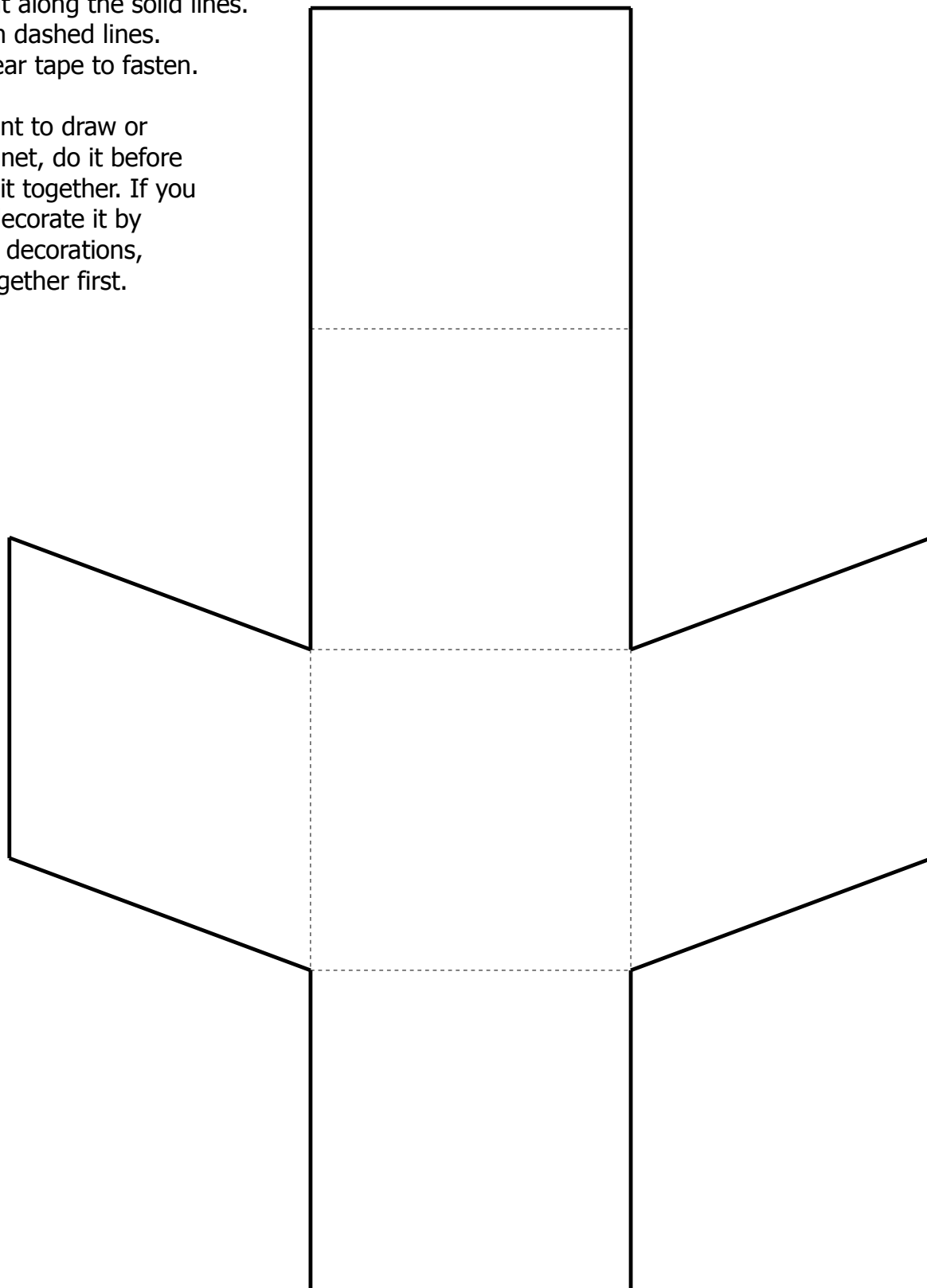
If you want to draw or color the net, do it before you tape it together. If you want to decorate it by gluing on decorations, tape it together first.



Geometric Net of a Rhombic Prism

1. Cut out along the solid lines.
2. Fold on dashed lines.
3. Use clear tape to fasten.

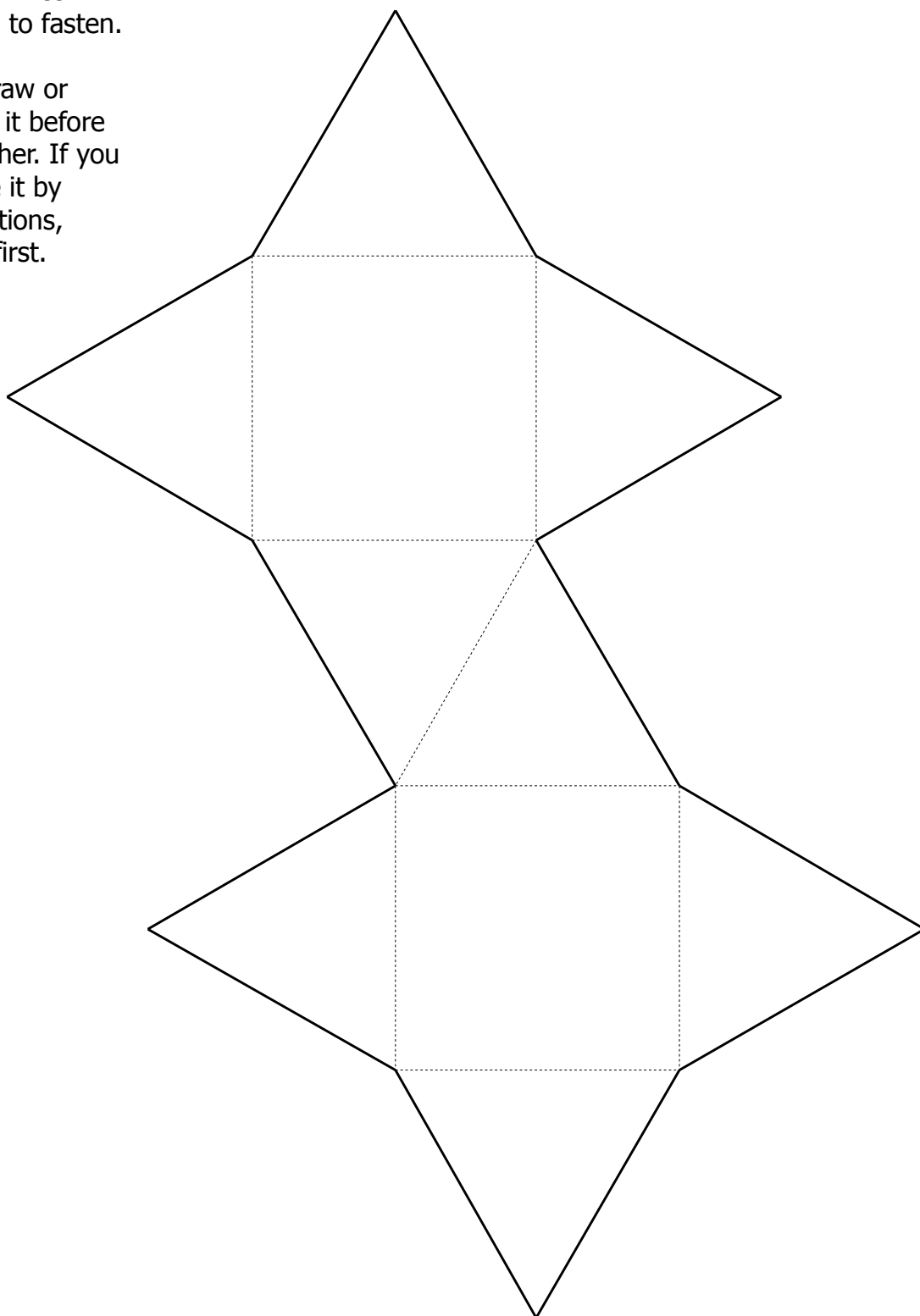
If you want to draw or color the net, do it before you tape it together. If you want to decorate it by gluing on decorations, tape it together first.



Geometric Net of a Square Antiprism

1. Cut out along solid lines.
2. Fold on dotted lines.
3. Use clear tape to fasten.

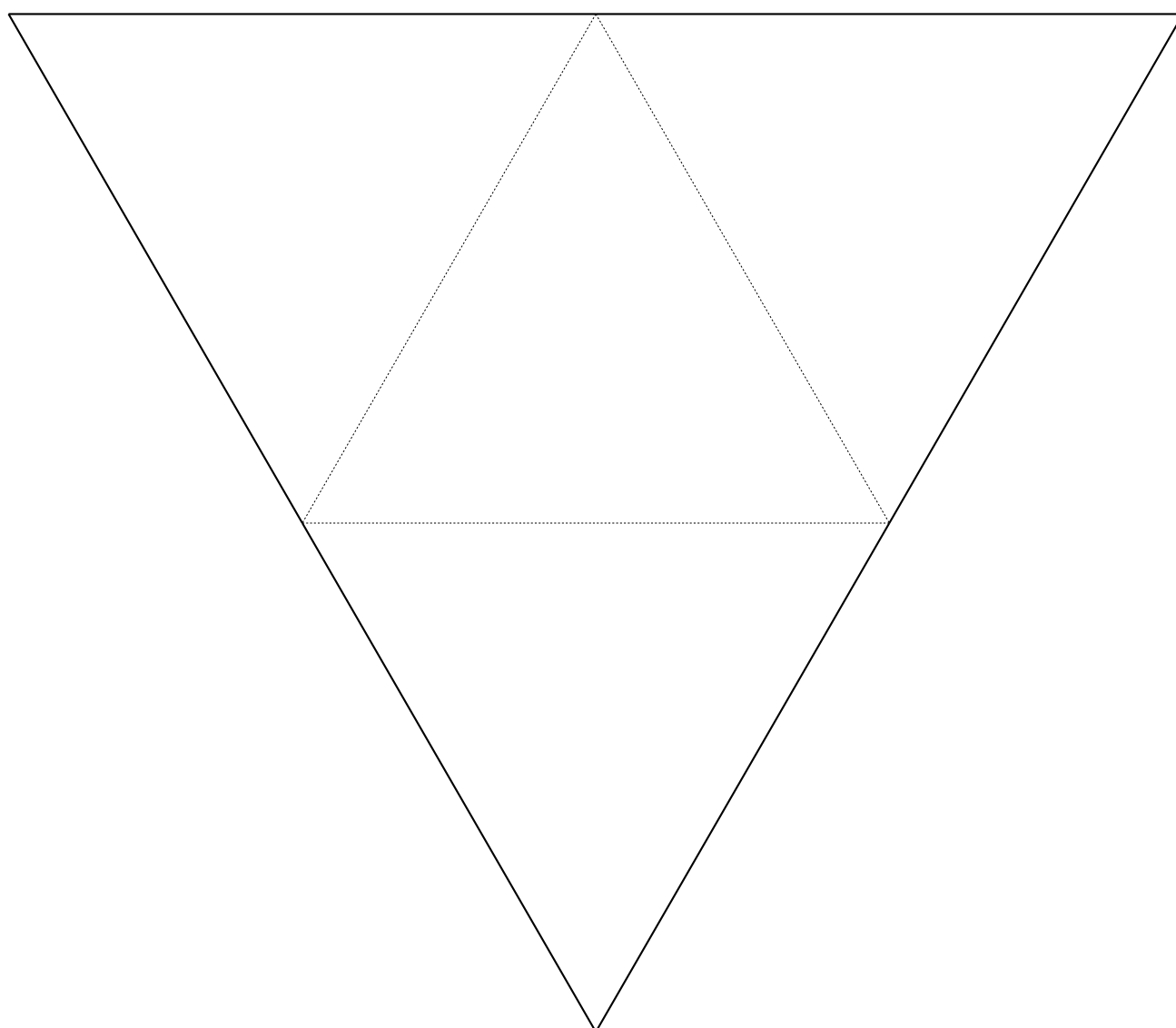
If you want to draw or color the net, do it before you tape it together. If you want to decorate it by gluing on decorations, tape it together first.



Geometric Net of a Regular Tetrahedron

1. Cut out along solid lines.
2. Fold on dotted lines.
3. Use clear tape to fasten.

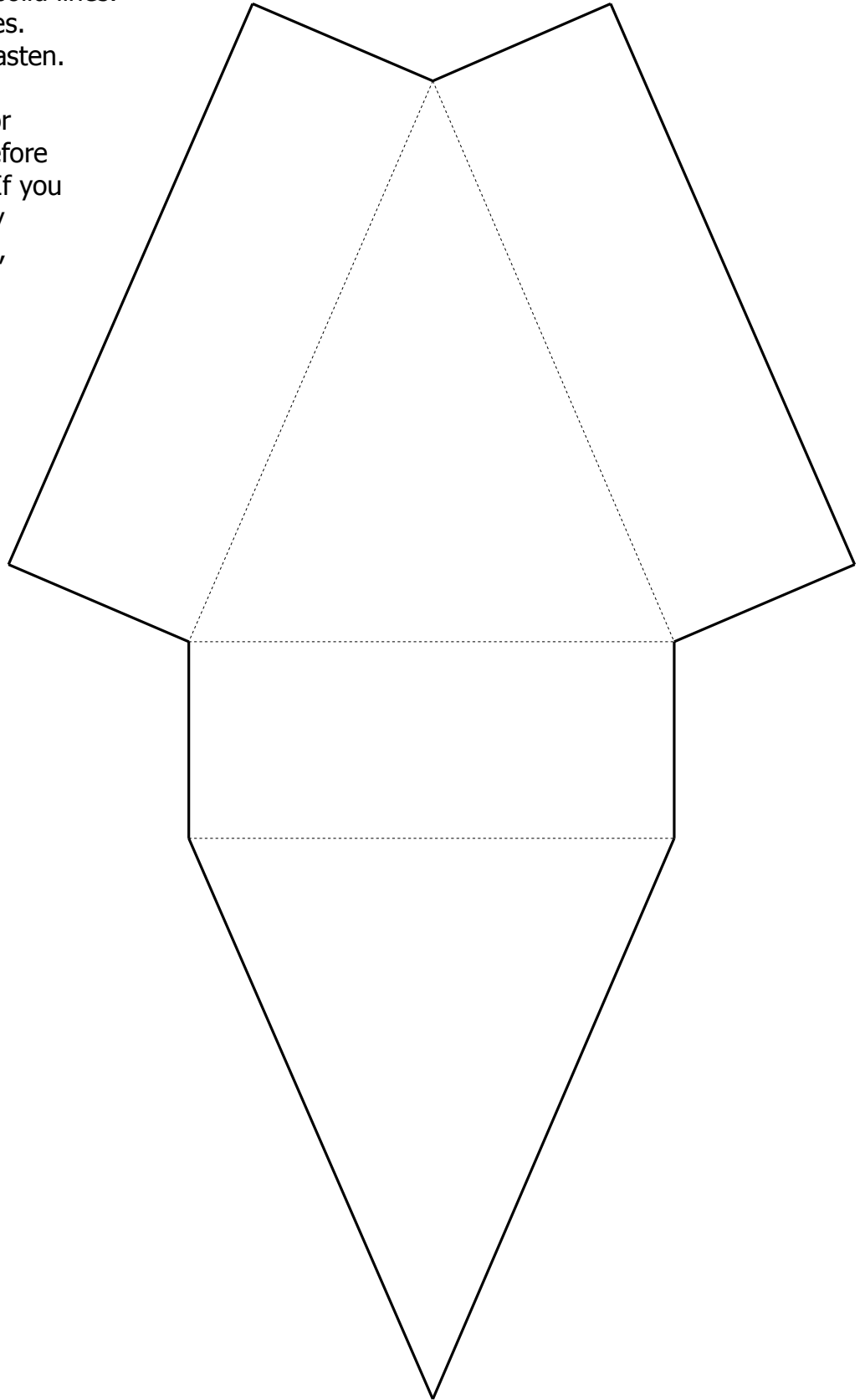
If you want to draw or color the net, do it before you tape it together. If you want to decorate it by gluing on decorations, tape it together first.



Geometric Net of a Triangular Pentahedron

1. Cut out along the solid lines.
2. Fold on dashed lines.
3. Use clear tape to fasten.

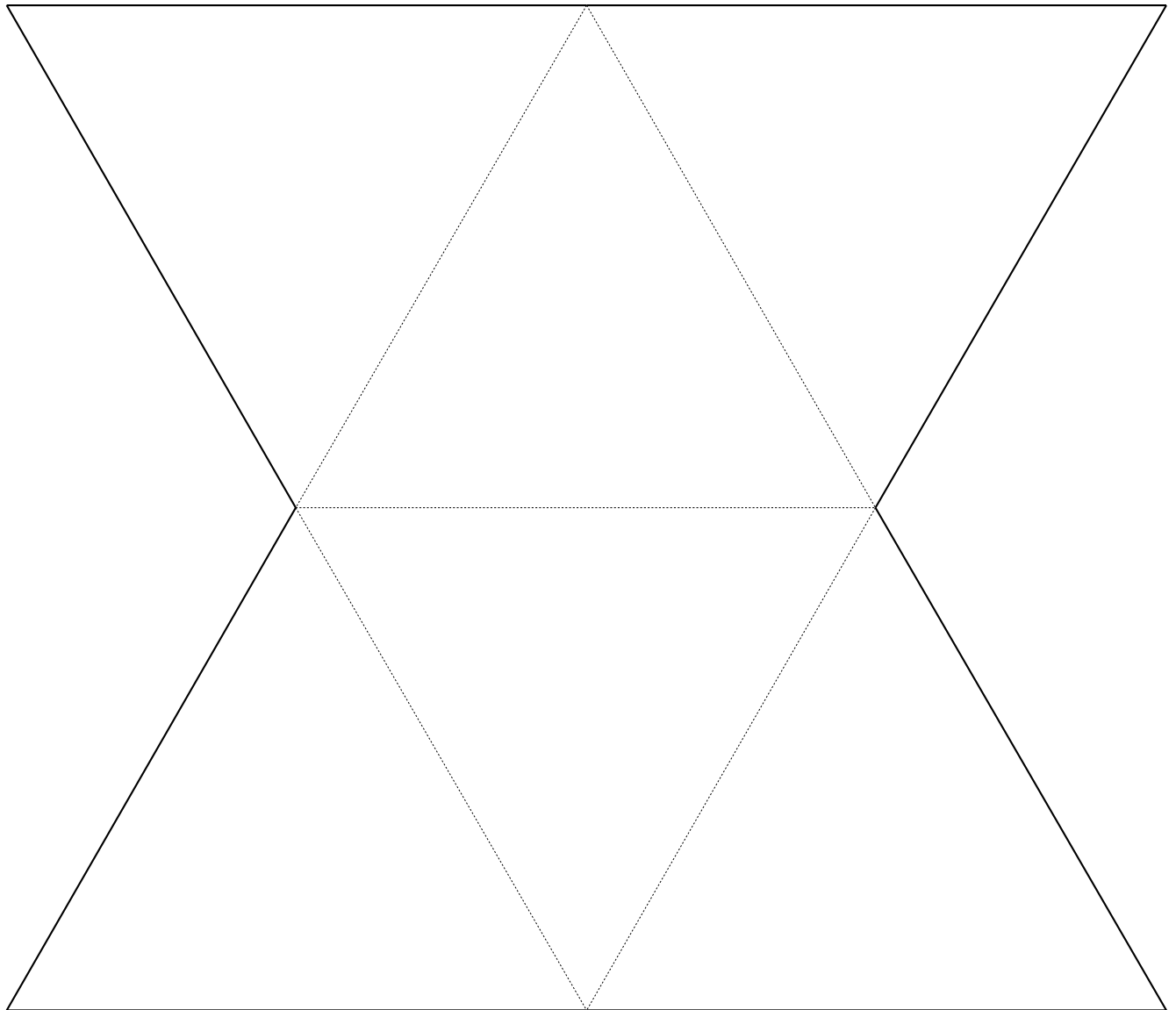
If you want to draw or color the net, do it before you tape it together. If you want to decorate it by gluing on decorations, tape it together first.



Geometric Net of an Triangular Dipyramid

1. Cut out along solid lines.
2. Fold on dotted lines.
3. Use clear tape to fasten.

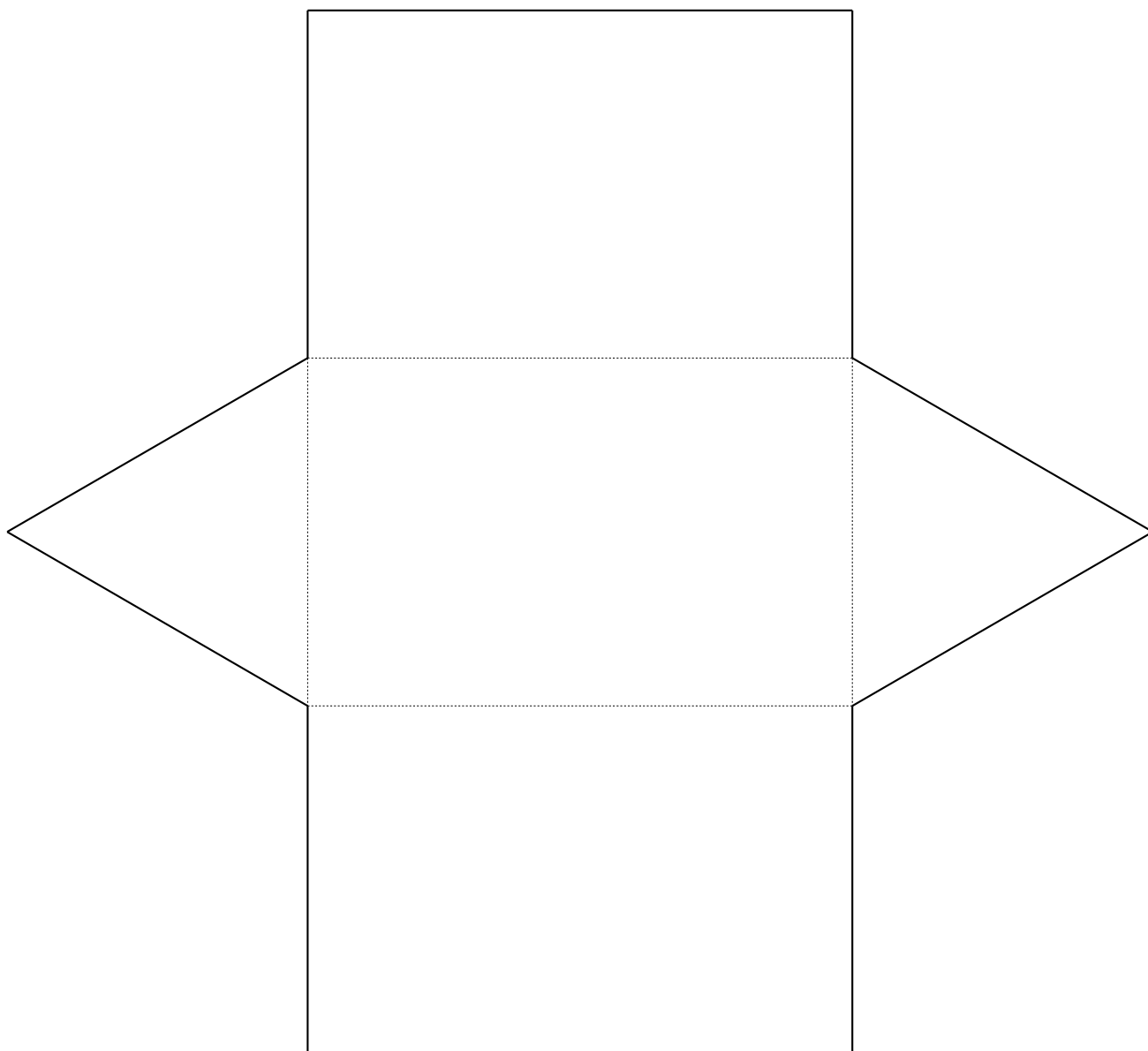
If you want to draw or color the net, do it before you tape it together. If you want to decorate it by gluing on decorations, tape it together first.



Geometric Net of a Triangular Prism

1. Cut out along solid lines.
2. Fold on dotted lines.
3. Use clear tape to fasten.

If you want to draw or color the net, do it before you tape it together. If you want to decorate it by gluing on decorations, tape it together first.



Geometric Net of a Truncated Tetrahedron

1. Cut out along solid lines.
2. Fold on dotted lines.
3. Use clear tape to fasten.

If you want to draw or color the net, do it before you tape it together. If you want to decorate it by gluing on decorations, tape it together first.

