



Database _____ Project # _____

Grant Programs Proposal Coversheet

All fields are required and must be completed to be eligible for funding.

Revised 2/9/12

Organizational Information: ☐ Click here if using a Fiscal Sponsor. If so, include information for Sponsor in this section.

Organization:	Wild Connections	EIN #:	14-1899876
Address:	2168 Pheasant Pl.		
City:	Colorado Springss	State:	CO
		Zip:	80909
Organizational Leader:	Jim Lockhart	Title:	President
Email:	info@wildconnections.org	Website:	www.wildconnections.org
Telephone:	719-686-5905	Fax:	n/a
		DUNs #:	n/a

*In your organization's preceding completed fiscal year, did it receive (1) 80% or more of its annual gross revenues in U.S. federal contracts, subcontracts, loans, grants, subgrants, and/or cooperative agreements; **AND** (2) \$25,000,000 or more in annual gross revenues from U.S. federal contracts, subcontracts, loans, grants, subgrants, and/or cooperative agreements?*

☐ Yes ☒ No

Project Contact Information (if different from above, or if above is a Fiscal Sponsor.)

Project Contact Name:	Misi N. Ballard	Telephone:	(303) 773-6765
Project Contact Title:	Project Coordinator	Email:	misiballard@comcast.net
Project Contact Address:	5930 S. Berry Lane		
City:	Greenwood Village	State:	CO
		Zip:	80111

Project Information

NFF Funds Requested:	\$ 6,000	Grant Program:	Matching Awards Program (1:1 Match Required)
Project Title:	Farnum Peak Project		

Brief description of project purpose and goals (Limit 250 characters, including spaces)

The Project will recover the wildlife habitat integrity of the larger Farnum Peak area and eliminate motorized use in the area by re-enforcing the existing physical closure of a long abandoned trail that is currently illegally violated by OHVs.

National Forest(s):	Pike-San Isabel				
Forest Service Region:	02 - Rocky Mountain Region	Start Date:	Mar 1, 2015	Completion Date:	Feb 29, 2016

What organizations have committed, or do you anticipate will commit funds for this project? Please list organizations providing nonfederal cash funds (eligible for NFF cash match, if required), as well as other supporting federal or in-kind contributions.

Donor Name:	Major donor designated and undesignated contributions	Amount:	4,250	Funds are:	Cash Committed: Non-Federal
Donor Name:	New-Land, Maki, Patagonia	Amount:	3,000	Funds are:	Cash Anticipated: Non-Federal
Donor Name:	Partners	Amount:	15,730	Funds are:	In-Kind: Non-Federal
Donor Name:	USFS, South Park District	Amount:	6,378	Funds are:	In-Kind: Federal

PROPOSAL NARRATIVE

Executive Summary

The Farnum Peak Project will restore and re-enforce a prior National Forest closure of an illegal, user-created track that bi-sects important wildlife wintering and calving areas in the Pike National Forest of south central Colorado. The Farnum Peak area is important not only to local wildlife populations of elk, deer, bighorn sheep, mountain lion, bobcat and lynx, but is also a popular backcountry hunting area easily accessed by Denver and Colorado Springs hunting enthusiasts. This unauthorized OHV activity is fragmenting important wildlife habitat. Wild Connections will partner with several other regional conservation and youth groups to provide a direct on-the-ground, citizen-based restoration project that will directly benefit National Forest lands and the surrounding communities by restoring the integrity of the Farnum Peak area.

Wild Connections and their partners will recruit volunteers, develop detailed site surveys, project plans, perform volunteer training and coordinate materials procurement with US Forest Service South Park Ranger District preceding the implementation phase of the project.

Mechanical preparation by the Forest Service of limited sections of the track and project materials pre-staging will occur before the volunteer workdays. Five workdays will be scheduled with the South Park Ranger District. Volunteers will complete hand preparation of the site, help with post-hole digging and preparation, cement mixing and setting, raking of disturbed soil, broadcasting native grass seeds and covering the area with straw mulch and erosion mats, as needed.

Follow-up monitoring will evaluate the success of the re-enforced closure and determine if further work is needed. The project will be reviewed with Forest Service staff and reports will be distributed to project partners, funders, volunteers and other interested persons.

Project Goals and Objectives

Goals

The Farnum Peak Project is a blend of NFF's programmatic emphases on Wildlife Habitat Improvement and Recreation. The Project's overarching goals are:

- Recover the wildlife habitat integrity of the larger Farnum Peak area which includes the Farnum and Schoolmarm Colorado Roadless Areas.
- Eliminate motorized use in the area by re-enforcing the existing physical closure of a long abandoned horse trail that is currently being illegally violated by OHVs.

Objectives

- Partner with the South Park Ranger District, Colorado Parks and Wildlife, Great Old Broads for Wilderness, Colorado Mountain Club, Central Colorado Wilderness Coalition, Sierra Club, Backcountry Hunters and Anglers and other interested groups on this stewardship project.
- Upgrade the existing closures at the ends of Forest Roads 231 and 237A which will prevent future illegal OHV use in this area.
- Restore a continuous OHV-free swath of roadless area habitat for elk, mountain lion, bobcat, deer, coyote, bighorn sheep, and lynx, as well as many smaller animals.

Justification of need

The Farnum Peak area is an island of 19,200 roadless acres as documented in Wild Connection's surveys. The old horse trail, which went over a ridge between two Forest Roads was officially closed to all motorized use by the Forest Service approximately seven years ago. However, in spite of signs that clearly indicate the restriction and a series of berms, the closure is consistently violated by illegal OHV use. The detrimental impacts on local populations of important wildlife from noise and persistent human presence are significant according to both Colorado Parks and Wildlife and the Forest Service. The illegal track segments this important wildlife habitat, creating a significant obstacle to migrating herds between protected areas.



Closure berms are violated by OHV's

Benefits to National Forest and surrounding communities

- Protection of critical wintering, calving/birthing land and summer range for wildlife.
- Preservation of an important island of wildlife habitat and its migratory connections from the rocky, montane Lost Creek Wilderness area to the parklands of South Park.
- Reduction of user created trails that cause erosion, habitat destruction and forest fragmentation.
- Elimination of excessive noise and human presence from illegal motorized vehicle use.
- Increase in opportunities for horse or foot-based backcountry hunting and other quiet recreation, a large economic benefit to South Park communities.
- Project meshes completely with South Park Ranger District's "Badger Flats Habitat Restoration Project" which focuses on closing illegal motorized trails in the neighboring Badger Flats area.

Community Involvement

- Consult with Colorado Parks and Wildlife and US Forest Service.
- Recruit workday participants from the conservation community.
- Engage youth, such as Boy Scouts and school classes, in workdays.

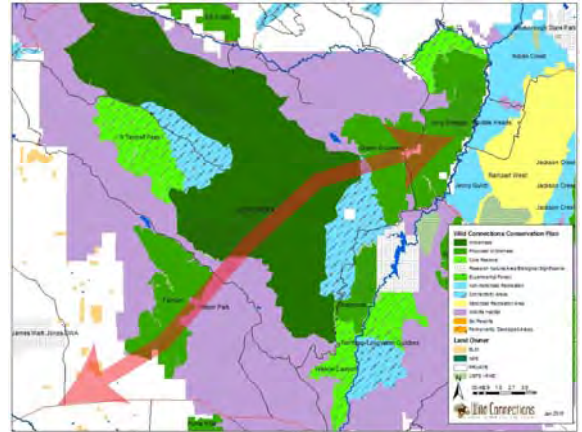
Long-term benefits the community will gain from this project

- Healthier wildlife populations, such as the elk herd(s) that are sensitive to noise and human presence, over the long term.
- Nurturing future conservationists by working with youth groups.

- Providing backcountry non-motorized hunting and other recreation that is easily accessible to Front Range communities.

How project fits in larger conservation projects or goals

- The Farnum Peak area is part of Wild Connections proposed Wildlands Network of protected cores and connecting wildlife corridors. It is strategically positioned on an arc of roadless lands that include Farnum, Lost Creek Wilderness, Green Mountain and Long Scraggy roadless areas lying between South Park and the South Platte River.
- The Farnum Peak Project fits with the Forest Service's goal to control illegal motorized use on adjacent Forest Service land under their multi-year Badger Flats Habitat Restoration Project.



How will results be shared and/or replicated elsewhere.

- Reports and articles will be published in conservation newsletters and local newspapers.
- Restoration and closure methods are continuously being refined and codified in best practices to be used in future projects. This current work builds on Wild Connections' restoration projects in Trout Creek (partially funded by NFF), Green Mountain and Geneva Basin and will inform future Wild Connections' restoration projects.

Methods to Achieve Objectives

The Farnum Project is modeled after projects previously completed by Wild Connections in other areas of the Pike/San Isabel National Forests and continues their commitment to restore and protect critical wildlife habitat. The following outline describes the major steps, activities, responsible persons and planned completion dates. Wild Connections Board member Misi N. Ballard will act as Project Coordinator and will work with the US Forest Service South Park Ranger District, Josh Voorhis, District Ranger and other District staff, and Farnum Peak Project partner organizations.

Planning

January-May 2015

- Schedule and conduct follow-up site visit with USFS staff and Wild Connections Project Coordinator and other partners in order to gather additional necessary site data and determine exact closure locations.
- Coordinate and schedule planned volunteer workdays with USFS staff estimated at five field days with two to three days each at east and west side closure sites—May require weekend work in order to get best volunteer recruitment.

- Schedule USFS trail crew for workdays.
- Schedule uniformed USFS staff to be present throughout each scheduled workday.
- Volunteer Outreach and Engagement: Farnum Peak Project advertising will be directed towards partner organizations and the general public, highlighting opportunities for involvement in stewardship planning, implementation and monitoring stages of the project.
- Partner and Community Engagement: Broaden current partnerships by engaging other stakeholder groups and interested parties, including the Great Old Broads for Wilderness, Colorado Mountain Club, Sierra Club, Central Colorado Wilderness Coalition, Backcountry Hunters and Anglers, Boy Scouts, and Park County Public Schools and others.
- Volunteer Recruitment and Training: Volunteers from partner and community groups will be recruited and trained in restoration.
- Work with USFS Staff to complete all technical and logistical planning.

Implementation

June – July 2015

- Mechanical site preparation of work areas will be performed prior to scheduled volunteer workdays: This work will require a US Forest Service dozer and auger to rip the illegal tracks, prepare it for seeding and to auger post holes. Forest Service dozer is planned for five days while other contract equipment will be scheduled for three days.
- Supply Procurement: Coordinate with US Forest Service staff on purchase of all supplies and materials needed to complete project.
- Materials staging: All required project construction materials will be appropriately staged by USFS. Volunteer workday supplies, such as snacks, water, first aid supplies, gloves, hardhats, eye protection, sunscreen, will be supplied by Wild Connections and partner organizations.
- Project Workdays: Five volunteer workdays, with at least 10 volunteers per day will be completed. One additional workday will be scheduled in case of necessary weather re-scheduling or to finish project. Project Leaders will train volunteers in appropriate use of tools, and assign tasks to small groups of 3-4 volunteers. Tasks will include post-hole preparation, post placement and cement preparation and placement, and rock gathering. Using hand tools, volunteers will do light preparation of soil by raking to break down berms left by mechanized equipment. A mix of native grass seeds will be broadcast and lightly raked into the soil. Straw mulch will be scattered to retain moisture and protect seeds, and erosion mats will be placed in steep areas, if necessary.

Expected Results

- Restore closure at ends of FS 231 and FS 237A in the Farnum Roadless Area.
- Protection of critical wintering, calving and summer areas for elk, deer and bighorn sheep populations.
- Protection of critical lynx habitat.
- A total of 40 volunteers will be recruited (10 per workday)
- Approximately 1,000 feet of illegal track will be ripped.
- Between 10 and 12 miles of illegal tracks will be blocked from motorized access.

- 19,200 acres within the Farnum roadless area as surveyed by Wild Connections will be re-connected. [The Farnum and Schoolmarm Colorado Roadless Areas are included within this boundary. See Project map.]
- This direct on-the-ground, citizen-based project will directly benefit National Forest lands, enhancing the viability of the areas' natural resources while benefitting and directly engaging the surrounding community.

Community Involvement

As described above, community involvement in the implementation phase will include regional conservation organizations, Park County School District civic and service clubs and classes in addition to other interested groups (for example, Backcountry Hunters and Anglers) and individuals.

Monitoring, Evaluation and Dissemination

August, 2015

- Wild Connections will conduct follow-up site visits in Fall 2015 and throughout Summer/Fall 2016 to insure closure integrity and motorized compliance. Reports and photos will be submitted to US Forest Service after each site visit. The two below re redundant. Suggest something like this instead.
- Site visits will immediately show the success/failure of the re-enforce closure installations.
- Wild Connections will provide project reports, financial accounting and project success evaluations to all funders and partners.
- Project summary will be shared with partner membership, funders, volunteers and the general public.

Project Timetable	<i>Jan-May 2014</i>	<i>Jun-Jul 2015</i>	<i>Aug 2015</i>	<i>Summer – Fall 2015</i>	<i>Summer- Fall 2016</i>
Planning					
Site Surveys	✓				
Funding	✓	✓			
Volunteer outreach and recruitment	✓	✓			
Partner and Community Engagement	✓	✓	✓	✓	
Leadership recruitment and training	✓	✓			
Technical planning completed	✓				
Implementation					
Site preparation		✓			
Procure all supplies		✓			
Materials staging		✓			
Four 1-day volunteer work days		✓			
Monitoring and Evaluation					
Monitor and asses project sites			✓	✓	✓
Evaluate project			✓	✓	✓
Write and distribute reports			✓	✓	✓

Working with Partners

Wild Connections will work with partners to recruit the necessary volunteers for scheduled workdays, to advertise the stewardship opportunity to the public, and to complete the physical work of re-enforcing existing road closures.

Environmental Compliance

No additional NEPA is required as this work is maintenance and enforcement of the existing closure.

Organizational Background

Wild Connections mission is to identify, protect and restore lands of the Upper Arkansas and South Platte watersheds to ensure the survival of native species and ecological richness. In 1995 volunteers set out to map roadless areas on the Pike-San Isabel National Forest. Now Wild Connections is concerned with the conservation potential of all public lands and the connections between public and private lands. Our vision for the future of the mountain headwaters of the South Platte and Arkansas Rivers is found in the *Wild Connections Conservation Plan*, a regional ecosystem protection strategy.

Wild Connections has three main programs. 1. *Wildlands Conservation* includes roadless area inventories which have been completed on more than 120 BLM and Forest Service roadless areas, wilderness advocacy directed at permanent protection for key roadless areas and conducting monthly wilderness field trips, and habitat restoration projects in Trout Creek, Green Mountain, Geneva Basin and Badger Flats. 2. The *Roadless Area Defense* program works on travel management planning and analysis and comments on agency projects. 3. *Biodiversity Protection* implements special activities for native species such as Canada lynx and Pawnee montane skipper butterfly.

Our focus geography spans the mountains of central Colorado from Denver and Leadville south to the state line. We serve a broad constituency of interested individuals of all ages and backgrounds, as well as work with the many local and regional conservation groups of our area.

Biographical sketches of professional staff involved in the project

The Farnum Peak Project continues a long tradition of program staffing by Wild Connections Board and volunteers. In each case these are selected with the same attention to their skills and experience as would be expected with paid staff. Thus high quality leadership is available and expenses are lower.

Misi Ballard, Project Coordinator: Prior experience includes eight years as environmental law paralegal; 14 years as Director of The Maya Weavers, a non-profit working with women weavers in Guatemala; three years as Board member and staff member of TACtile Textile Arts Center, a non-profit promoting textile arts and artists; four years as Great Old Broads for Wilderness' South Park, CO Broadband Leader;

James Lockhart, Project Leader: President of Wild Connections, appointed December 2014.s Member of Wild Connections Board since 2002. Conservation Chair and Outings Chair for Pikes Peak Sierra Club Group. Qualified Sierra Club Outings Leader since 1988. Member of Colorado State Bar (inactive since 2012).

John Chapman, Project Consultant: Project Director for three Wild Connections restoration projects at Trout Creek, Green Mountain and Geneva Basin; many years of administrative, community outreach and program experience with the National Park Service, including as Park Supervisor, and with Southern Rockies Conservation Alliance's wildfire protection program.

Wild Connections Board

Jim Lockhart, President
Colorado Springs, Legal writer

Claude Neumann
Denver, Engineer

John Stansfield, Vice-president
Monument, Storyteller/writer

Deb Overn
Denver, Attorney

Alison Gallensky
Secretary/Treasurer
Westminster, GIS expert

Lee Patton
Denver, Writer

Misi Ballard
Greenwood Village, Conservation activist

Kristin Skoog,
Colorado Springs, Systems software engineer

John Chapman
Littleton, National Park Service ret.,
Wildfire consultant

Ex officio
John Sztukowski. Staff
Salida, Wildlands Inventory Coordinator

Tom Mowle
Colorado Springs, USAir Force ret.

Jean Smith
Colorado Springs,
Nonprofit administration

Wild Connections Board

Jim Lockhart, President
Colorado Springs, Legal writer

John Stansfield, Vice-president
Monument, Storyteller/writer

Alison Gallensky
Secretary/Treasurer
Westminster, GIS expert

Misi Ballard
Greenwood Village, Conservation activist

John Chapman
Littleton, National Park Service ret., Wildfire
consultant

Tom Mowle
Colorado Springs, USAir Force ret.

Claude Neumann
Denver, Engineer

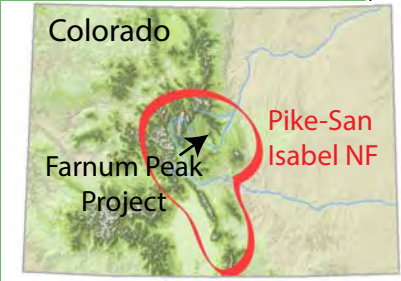
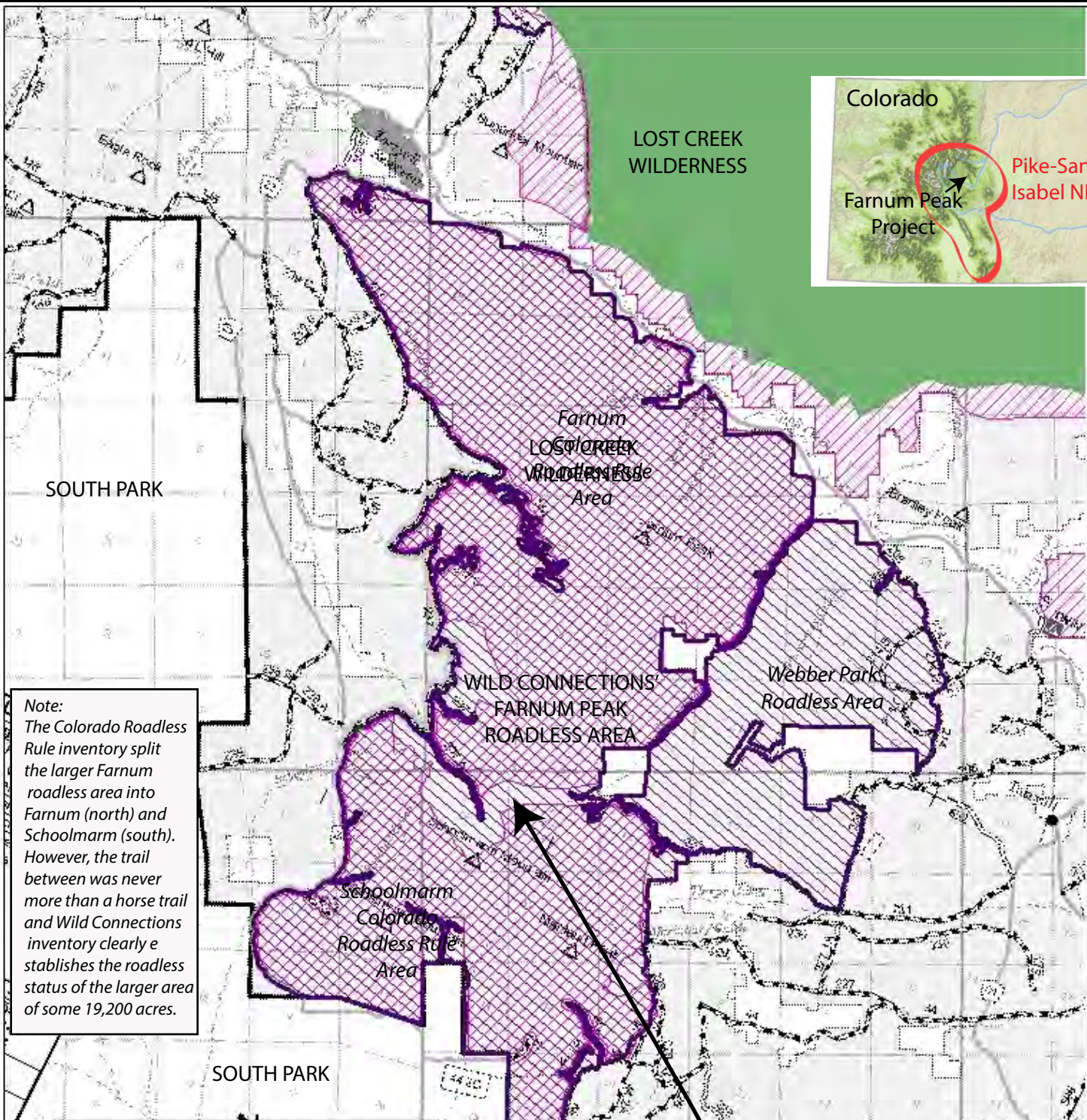
Deb Overn
Denver, Attorney

Lee Patton
Denver, Writer

Kristin Skoog,
Colorado Springs, Systems software engineer

Ex officio
John Sztukowski. Staff
Salida, Wildlands Inventory Coordinator

Jean Smith
Colorado Springs,
Nonprofit administration



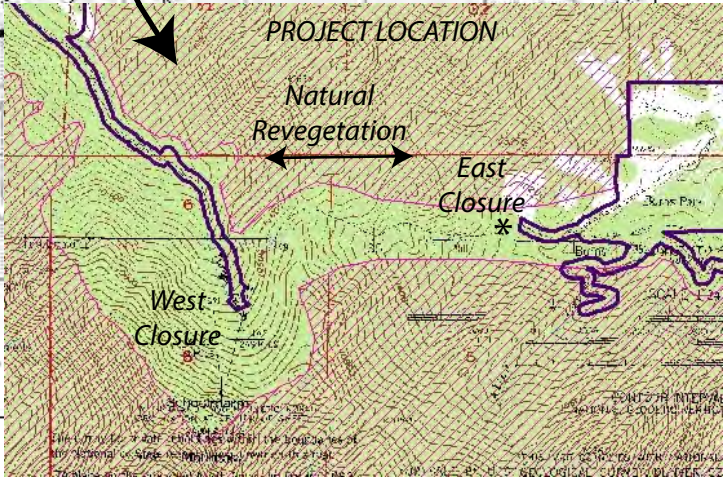
Note:
The Colorado Roadless Rule inventory split the larger Farnum roadless area into Farnum (north) and Schoolmarm (south). However, the trail between was never more than a horse trail and Wild Connections inventory clearly establishes the roadless status of the larger area of some 19,200 acres.

Farnum Peak Project

- Wilderness
- Wild Connections Roadless Area
- Colorado Roadless Rule Area
- Motorized Routes

0 0.375 0.75 1.5 2.25 3 Miles

Wild Connections Jan 2015



Organization: Wild Connections			Project: Farnum Peak		
Part I: Budget					
	(a)	(b)	(c)	(d)	(e)
Category	Funds Requested from NFF*	Private Donor Funds (Non-Federal)	Partner In-kind Contributions	Other Federal Funds	Total Category Value
NFF Categories:					
Salaries & Benefits	\$	\$	\$12,700.00	\$5,188.00	\$17,888.00
Consultants/Contractors	\$1,780.00	\$1,780.00	\$400.00	\$	\$3,960.00
Stipends	\$	\$	\$	\$	\$0.00
Office Expenses	\$275.00	\$425.00	\$	\$	\$700.00
Publications/Outreach Materials	\$325.00	\$325.00	\$	\$	\$650.00
Supplies	\$3,109.00	\$3,109.00	\$	\$	\$6,218.00
Equipment/Rental	\$	\$	\$250.00	\$375.00	\$625.00
Travel	\$511.00	\$539.00	\$2,380.00	\$815.00	\$4,245.00
Indirect Expenses	\$	\$	\$	\$	\$0.00
Other Categories (specify):					
	\$	\$	\$	\$	\$0.00
	\$	\$	\$	\$	\$0.00
	\$	\$	\$	\$	\$0.00
	\$	\$	\$	\$	\$0.00
	\$	\$	\$	\$	\$0.00
	\$	\$	\$	\$	\$0.00
	\$	\$	\$	\$	\$0.00
	\$	\$	\$	\$	\$0.00
Total	\$6,000.00	\$6,178.00	\$15,730.00	\$6,378.00	\$34,286.00
Part II. Non-Federal Donors					
In the space below, identify each non-federal donor and contribution amount. Please indicate cash and in-kind contribution amounts and note whether each is a committed or anticipated contribution. Attach an additional page if necessary.					
	<i>Donor or Type</i>	<i>Amount Cash</i>	<i>Amount In-Kind</i>	<i>Committed or Anticipated?</i>	
	Major donor gifts (2)	\$ 1,750.00	\$ -	Committed	
	WC unrestricted donations	\$ 2,500.00	\$ -	Committed	
	New-Land, Maki Fndns	\$ 1,000.00	\$ -	Anticipated	
	Patagonia	\$ 2,000.00	\$ -	Anticipated	
Volunteer/partner time, travel, supplies	\$ -	\$ 15,730.00	Anticipated		
	\$ -	\$ -			
	\$ -	\$ -			
	Total	\$ 7,250.00	\$ 15,730.00		
*NFF matching funds cannot support general administrative overhead or be directed to the USDA Forest Service or any other federal entity, but may support expenses directly related to the project.					

BUDGET NARRATIVE: Farnum Peak Project

The total budget for Farnum Peak is \$34,286, with \$6,000 requested from NFF to match Wild Connections \$6,178. In addition we expect \$15,730 in Partner In-kind and \$6,378 from South Park Ranger District in-kind input. The Forest Service input is relatively low, at least as compared with our previous experience. Due to federal budget cuts, the South Park District has no funds for restoration supplies, but they will cover substantial staff presence and travel. The Farnum Peak Project is a very high Wild Connections priority and we are committed to raising the funds required.

Salaries \$17,888) The Farnum Peak Project continues a long tradition of program staffing by Wild Connections Board and volunteers, and there will be significant presence of USFS staff on work days.

- In-kind partner contributions: \$3,900 Wild Connections Project Coordinator and Team Leaders for each of five workdays and \$800 for Wild Connections monitoring volunteers.
- In-kind partner contributions of \$8,000 for 50 workday volunteers.
- \$5,188 Other Federal Funds for South Park District staff of 4 on site for 5 work days.

Consultants/Contractors (\$3,960)

- In-kind partner contribution of \$400 for Wild Connections Project Consultant who will assist the Project Coordinator in planning and implementation.
- \$400 is allotted for GIS services from Rocky Mountain Wild for reports and publications.
- A heavy equipment operator for site preparation will be contracted for \$3,160 for 5 days work.

Office Expenses (\$700)

- Expenses of computer, internet and social media; paper and ink for in-house printing, and postage for volunteer recruitment.

Publications/Outreach Materials (\$650)

- \$650 to cover the production and printing costs of volunteer recruitment flyers, work day materials and monitoring reports.

Supplies \$6,218

- On-site restoration materials, including post and cable, cement, grass seed, erosion mat, straw bales and signage total \$ 5,818.
- Volunteer lunches for work days at \$400.
- The Forest Service is operating with a reduced budget and can only provide minor supplies..

Equipment \$625

- Hand tools, hard hats and gloves will be provided as an in-kind contribution by Colorado Mountain Club, Rocky Mountain Field Institute and the Forest Service.

Travel \$ 4,245

- Travel for the Project Coordinator to finalize details with the Forest Service and to be present during the five work days and for the monitoring team will be reimbursed at the 2015 federal rate of \$0.575.
- Forest Service staff travel will be covered by the South Park District.
- The in-kind value of volunteer travel at \$0.14 per mile is \$2380

NFF Expanded Project Budget					
Cost Category Description	(a) NFF Funds Requested	(b) Private Donor Funds	(c) Partner In-Kind Contributions	(d) Other Federal Funds	(e) Total
Salaries & Benefits					
Project Coordinator, 15 days @ \$25/hour			\$ 3,000.00		\$ 3,000.00
Workday Team Leaders 1 per day, 5 days @ \$ 22.50/hour			\$ 900.00		\$ 900.00
USFS on site staff 4 per day x 5 days				\$ 5,188.00	\$ 5,188.00
Volunteers - 50 @ \$20/hr			\$ 8,000.00		\$ 8,000.00
WC monitoring - 2 people, 2 trips @ \$25/hr			\$ 800.00		\$ 800.00
<i>Subtotal</i>	\$ -	\$ -	\$ 12,700.00	\$ 5,188.00	\$ 17,888.00
Consultants/Contractors					
Detail					
Project Consultant 8 hrs @ \$50			\$ 400.00		\$ 400.00
GIS consultant@ \$400	\$ 200.00	\$ 200.00			\$ 400.00
Heavy equipment operator contract	\$ 1,580.00	\$ 1,580.00			\$ 3,160.00
<i>Subtotal</i>	\$ 1,780.00	\$ 1,780.00	\$ 400.00	\$ -	\$ 3,960.00
Stipends					
Position*Rate*Time					
					\$ -
					\$ -
					\$ -
<i>Subtotal</i>	\$ -	\$ -	\$ -	\$ -	\$ -
Office Expenses					
Detail					
Computer, internet, social media support	\$ 150.00	\$ 250.00			\$ 400.00
Office supplies (paper, ink)	\$ 25.00	\$ 75.00			\$ 100.00
Postage	\$ 100.00	\$ 100.00			\$ 200.00
<i>Subtotal</i>	\$ 275.00	\$ 425.00	\$ -	\$ -	\$ 700.00
Publications/Outreach Materials					
Detail					
Recruitment flyer	\$ 250.00	\$ 250.00			\$ 500.00
Volunteer materials	\$ 25.00	\$ 25.00			\$ 50.00
Monioring report(s)	\$ 50.00	\$ 50.00			\$ 100.00
<i>Subtotal</i>	\$ 325.00	\$ 325.00	\$ -	\$ -	\$ 650.00
Supplies					
Type*Qty*Cost					
Post and cable, 350" @ \$1,200/100 feet	\$ 2,100.00	\$ 2,100.00			\$ 4,200.00
QuickCrete 12 bags/ 100 feet @ \$3	\$ 63.00	\$ 63.00			\$ 126.00
Erosion mat 40'x 100' @ \$140 x 2 rolls	\$ 140.00	\$ 140.00			\$ 280.00
Native seed 8,000 sq ft x 3# per 1000 sq ft x \$12	\$ 144.00	\$ 144.00			\$ 288.00
Mat anchor pins 200 @ \$12/100	\$ 12.00	\$ 12.00			\$ 24.00
Straw bales 25 @\$8	\$ 100.00	\$ 100.00			\$ 200.00
Carsonite signage at closures @ \$200	\$ 100.00	\$ 100.00			\$ 200.00
2 Closure education signs	\$ 250.00	\$ 250.00			\$ 500.00
Volunteeer/leaders lunches/snacks 17-20 per day x 5 days @ \$4	\$ 200.00	\$ 200.00			\$ 400.00
<i>Subtotal</i>	\$ 3,109.00	\$ 3,109.00	\$ -	\$ -	\$ 6,218.00

Equipment/Rental					
Type*Qty*Cost					
Chain saws				\$ 125.00	\$ 125.00
Rakes, shovels				\$ 250.00	\$ 250.00
Hard hats, gloves			\$ 250.00		\$ 250.00
<i>Subtotal</i>	\$ -	\$ -	\$ 250.00	\$ 375.00	\$ 625.00
Travel					
#People*#Trips*Perdiem/Mileage					
Project Coordinator,7 trips/170 mi @.0575	\$ 345.00	\$ 345.00			\$ 690.00
2 Monitors/ 2 trips x 170 milesx \$0.575	\$ 166.00	\$ 194.00			\$ 360.00
USFS staff 4 trips x 4 staff x 100 mi @ \$0.575				815.00	
Volunteer travel value @ \$0.14/mile			\$ 2,380.00		\$ 2,380.00
<i>Subtotal</i>	\$ 511.00	\$ 539.00	\$ 2,380.00	\$ 815.00	\$ 4,245.00
Other (specify)					
Detail					
					\$ -
					\$ -
					\$ -
<i>Subtotal</i>	\$ -	\$ -	\$ -	\$ -	\$ -
Project Total	\$ 6,000.00	\$ 6,178.00	\$ 15,730.00	\$ 6,378.00	\$ 34,286.00

Wild Connections

Profit & Loss

January through December 2014

	Jan - Dec 14
Ordinary Income/Expense	
Income	
Contributed support	
Business	765.16
Foundations	29,075.00
Individuals	14,815.00
Organizations	100.00
Total Contributed support	44,755.16
Revenue	
Interest	31.21
Miscellaneous revenue	10.00
Total Revenue	41.21
Total Income	44,796.37
Gross Profit	44,796.37
Expense	
Advertising and Promotion	63.72
Personnel	
Professional/consultant fees	
Agency Researcher	1,340.00
BLM Organizer	118.75
Mapping Coordinator	27,577.50
Report Writer	7,483.75
Total Professional/consultant fees	36,520.00
Total Personnel	36,520.00
Contract Service	
GIS Mapping	3,080.00
Total Contract Service	3,080.00
Membership dues	100.00
Insurance	
Liability Insurance	1,094.00
Total Insurance	1,094.00
Printing & copying	3,266.38
Postage & shipping	319.20
Legal & corp expenses	239.26
Supplies	
Office	37.65
Program supplies	5.65
Total Supplies	43.30
Equipment	
Computers, software & maint	1,058.91
Equipment - Other	408.31
Total Equipment	1,467.22
Telephone & telecommunications	305.88
Conferences & training	10.00
Travel	
Mileage	5,325.48
Total Travel	5,325.48
Misc expenses	53.71
Total Expense	51,888.15
Net Ordinary Income	-7,091.78
Net Income	-7,091.78

3:30 PM
01/11/15
Cash Basis

Wild Connections
Balance Sheet
As of December 31, 2014

	<u>Dec 31, 14</u>
ASSETS	
Current Assets	
Checking/Savings	
CapitalOne 360	4,783.25
Cash	6.25
Vectra checking	13,945.49
Total Checking/Savings	18,734.99
Other Current Assets	
Undeposited Funds	130.00
Total Other Current Assets	130.00
Total Current Assets	18,864.99
TOTAL ASSETS	<u>18,864.99</u>
LIABILITIES & EQUITY	
Liabilities	
Current Liabilities	
Accounts Payable	
General Payables	-24.00
Total Accounts Payable	-24.00
Credit Cards	
Visa CC 5238	2,474.18
Total Credit Cards	2,474.18
Total Current Liabilities	2,450.18
Total Liabilities	2,450.18
Equity	
Opening Bal Equity	994.56
Retained Earnings	22,512.03
Net Income	-7,091.78
Total Equity	16,414.81
TOTAL LIABILITIES & EQUITY	<u>18,864.99</u>